

West Volusia Service Changes

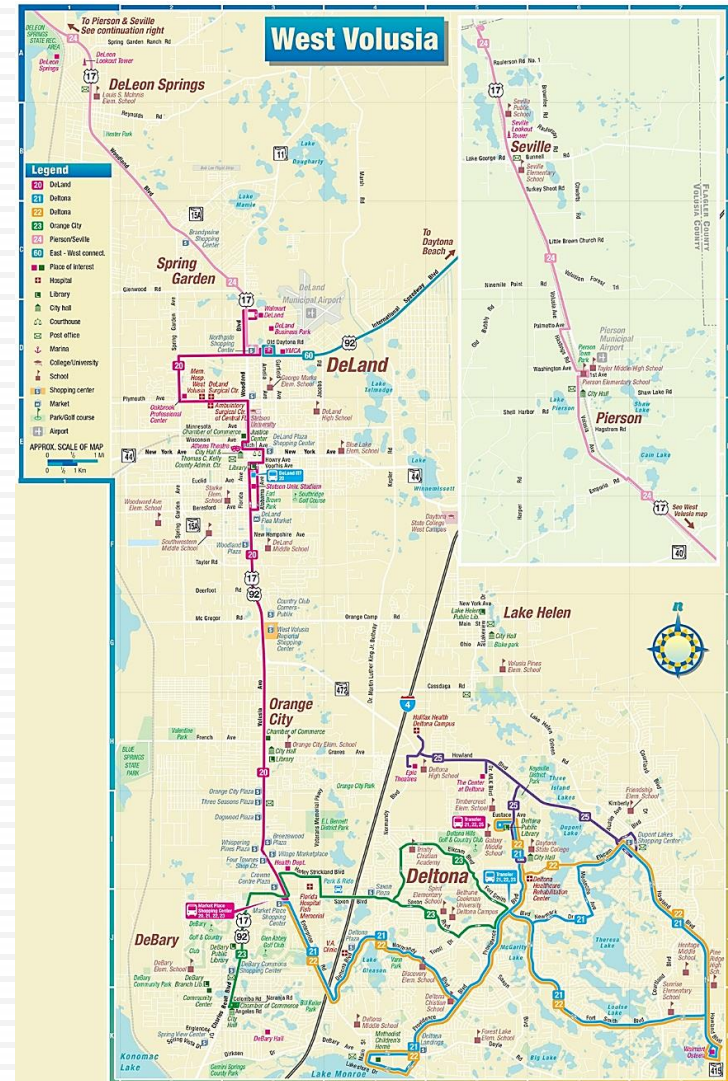


Votran - West Volusia Service Area



Votran operates 7 routes to provide service to West Volusia County. Service is Monday through Saturday. There is no Night/Sunday service and limited Holiday Service.

- ❑ Route 20 – DeLand to Orange City
- ❑ Route 21 & 22 – Orange City to Deltona
- ❑ Route 23 – DeBary to Deltona via Orange City
- ❑ Route 24 – DeLand to Seville
- ❑ Route 25 – North Deltona
- ❑ Route 60 – Cross county connector service between DeLand and Daytona Beach



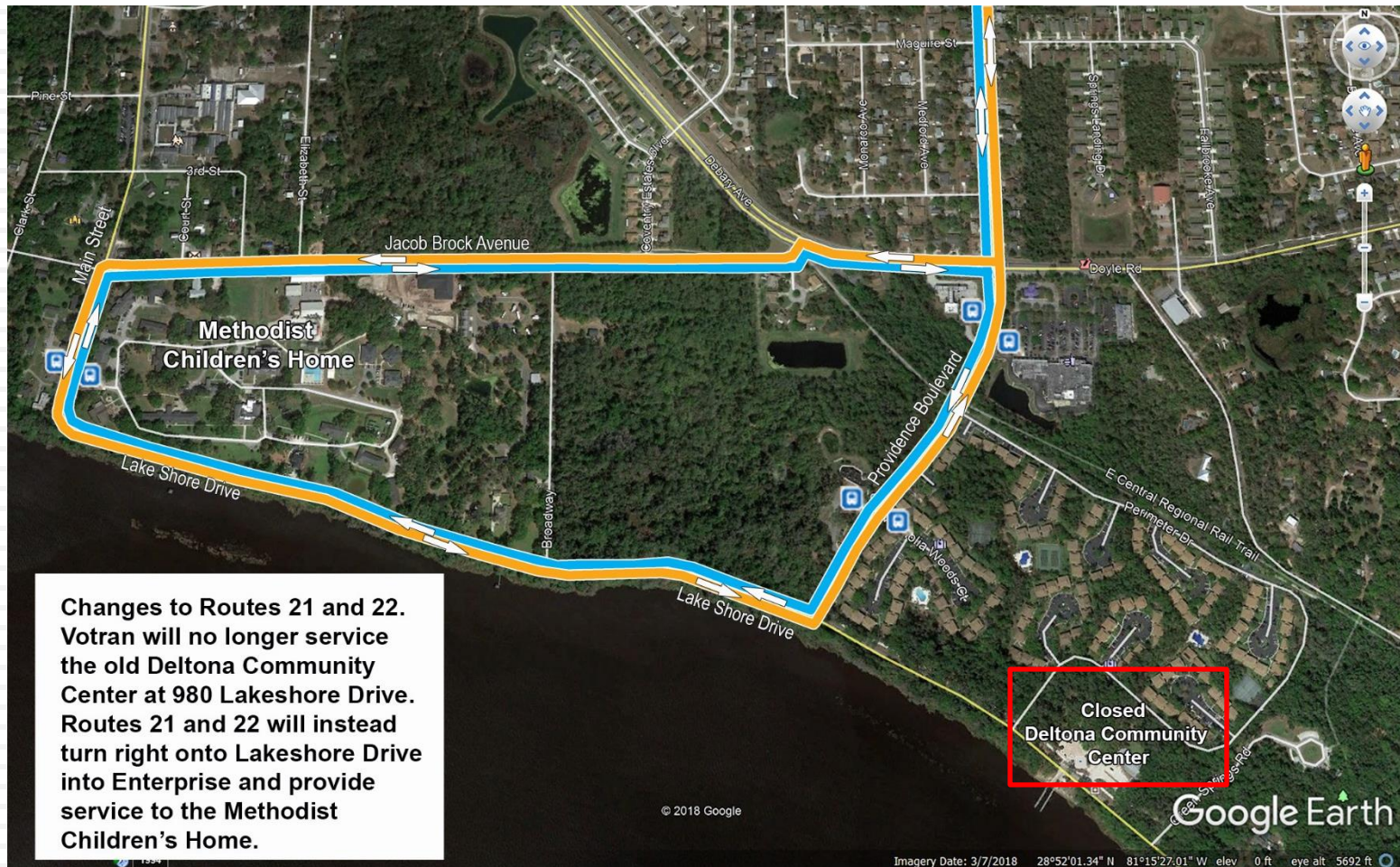
Service Changes



- ❑ Routes 21 and 22 will no longer service the Old Deltona Community Center at 980 Lakeshore Drive.
- ❑ Routes 21 and 22 will turn right onto Lakeshore Drive into Enterprise and will provide service to the Methodist Children's Home located at 51 Main St.
- ❑ Routes 20,21,22,23 will no longer go into the Crown Center parking lot. The Crown Center Stops will be relocated to Enterprise Road.
- ❑ The New Route 25 will service Deltona and operate primarily in the Howland Boulevard corridor.

Route 21 and 22 Changes

- ❑ New configuration for the Routes 21 and 22.



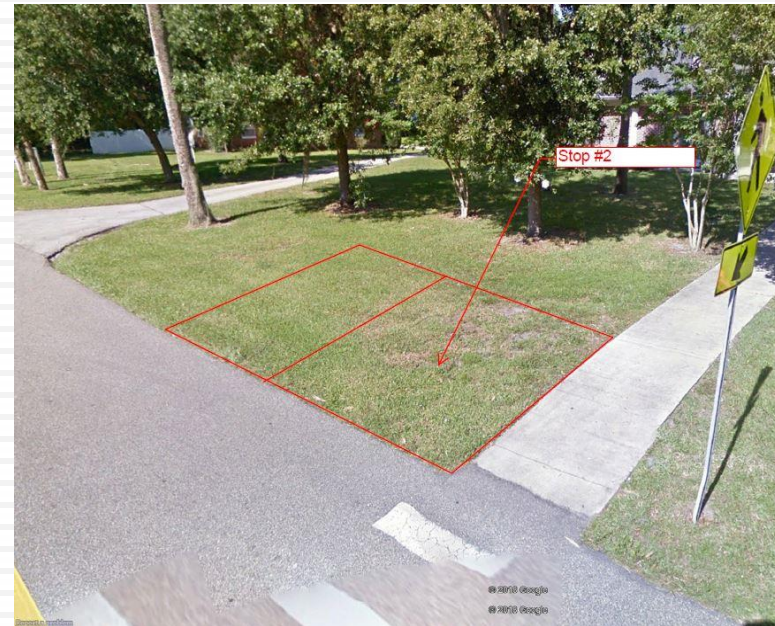
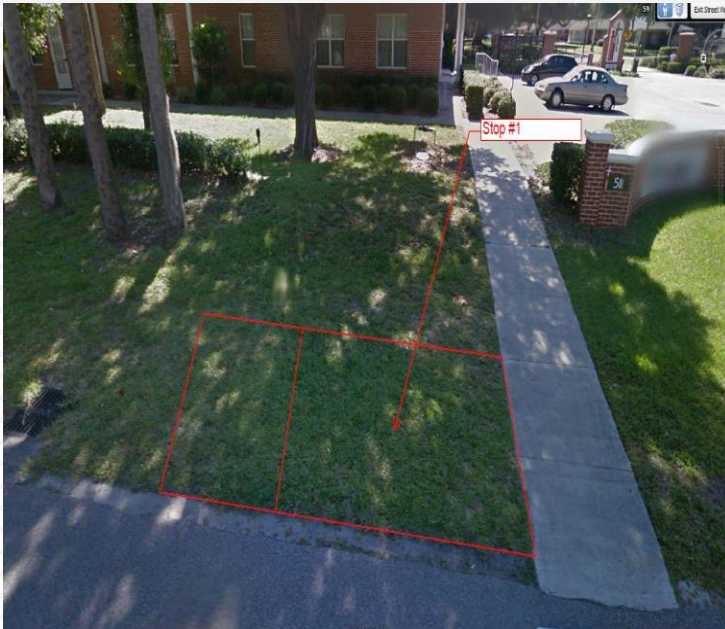
Route 21 and 22 Changes

- ❑ New stop locations.



Route 21 and 22 Changes

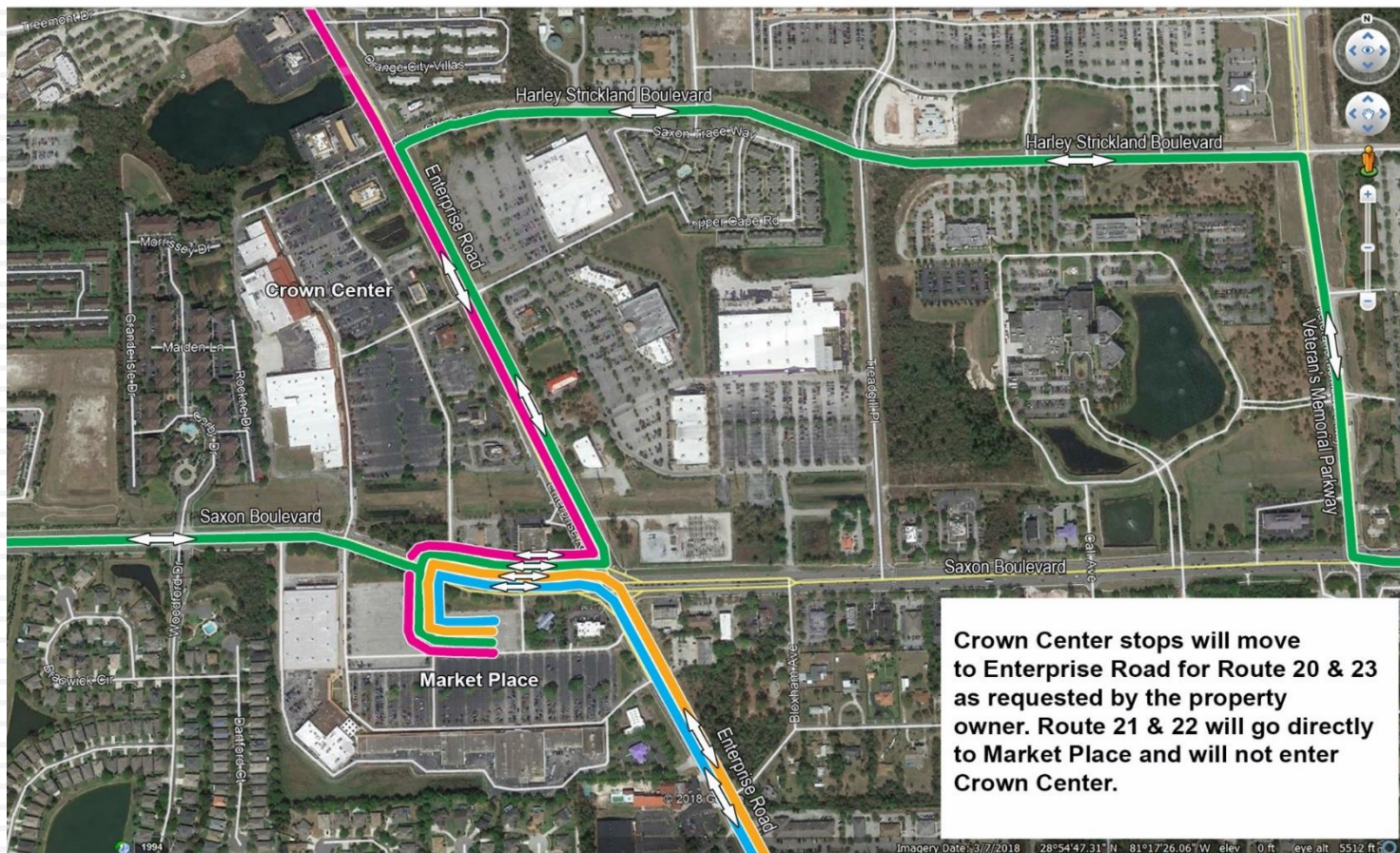
- ❑ ADA bus stop pad concept.



Orange City Service Changes



- ❑ Routes 20, 21, 22, 23 will no longer go into the Crown Center parking lot.



Orange City Service Changes

We drive a great bargain

- ❑ Routes 20, 23 will stop on Enterprise Road at Crown Center



Addition Of Service

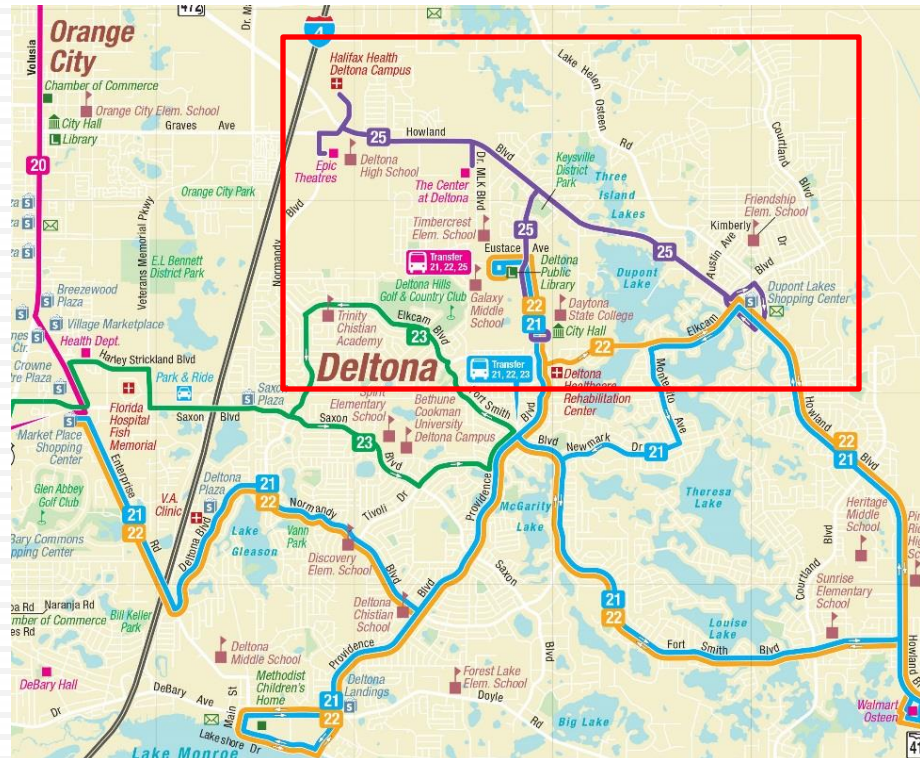


Route 25 – The Howland Connector

- The Route 25 will begin service in February 2019
- Votran has allocated \$341,018 for the implementation of the new route for FY-2018/2019.
- It will service Dupont Lakes Shopping Center, Deltona City Hall/Daytona State College – Deltona, The Center at Deltona, Halifax Health – Deltona and Epic Theatres of West Volusia.
- The Route 25 will service 22 ADA compliant stops along the Howland Boulevard and Providence Boulevard corridors.
- There will be no Night/Sunday or Holiday Service.

Addition Of Service

- The new Route 25 will provide connection to Votran Routes 21 and 22 at Deltona City Hall. This will allow riders to go between ESE Deltona and N Deltona



Addition Of Service

□ The new Route 25

