



2035 LONG RANGE TRANSPORTATION PLAN



A look into the future

Updated 4/24/2012

THIS REPORT WAS FINANCED, IN PART, BY THE U. S. DEPARTMENT OF TRANSPORTATION, THE FLORIDA DEPARTMENT OF TRANSPORTATION, AND THE LOCAL PARTICIPATING GOVERNMENTS.



The Volusia Transportation Planning Organization (TPO) is directly responsible for ensuring that the federal and state transportation dollars spent on projects in our local area reflect local priorities and follow a continuing, cooperative and comprehensive planning process. This brochure summarizes the 2035 Long Range Transportation Plan, which was adopted in September 2010, and outlines the transportation projects anticipated to support our future.

TABLE OF CONTENTS

WHAT IS THE VOLUSIA TPO?	4
THE VOLUSIA TPO BOARD	5
TRANSPORTATION PLAN (LRTP)	6-7
VISION STATEMENT & GOALS	7
FINANCIAL RESOURCES	8
TRANSPORTATION OPTIONS	9-10
A LOOK TO OUR FUTURE	10
DEVELOPMENT OF THE VOLUSIA TPO'S 2035 LRTP	11
STRATEGIC INTERMODAL SYSTEM CHART	12
STATE AND FEDERAL – OTHER HIGHWAY CHART	12
MASS TRANSIT CHART	13
CONSOLIDATION OF LRTP ALTERNATIVES	14
FINAL COMMENT AND ADOPTION	14
COST FEASIBLE PROJECT MAP	15
LOCAL ROADS PROJECT MAP	16
LOCAL ROADS PROJECT CHART	17
TRANSPORTATION SURTAX	18
LRTP SUBCOMMITTEE MEMBERS	19

VOLUSIA TRANSPORTATION PLANNING ORGANIZATION

The Volusia Transportation Planning Organization (TPO) is an independent organization responsible for the planning and programming of federal and state transportation funds for all of Volusia County and for the cities of Flagler Beach and Beverly Beach in Flagler County. This organization is the primary forum within which local governments and citizens voice concerns, identify priorities, and plan for improvements to all modes of transportation – roadway, public transportation, and bicycle and pedestrian facilities.

The Volusia TPO Board membership consists of elected officials representing local governments within the planning area, including municipal and county entities, as well as staff appointments from the Florida Department of Transportation and Volusia County School Board. The Board is supported by a Technical Coordinating Committee (TCC), Citizens' Advisory Committee (CAC), Bicycle/Pedestrian Advisory



Committee (BPAC) and the Transportation Disadvantaged Local Coordinating Board (TDLCB). These committees are composed of technical staff from local government organizations, citizen representatives appointed by elected officials, and community organizations created to advocate on behalf of disadvantaged citizens. The Volusia TPO Board and standing committees meet monthly to review and direct the development of the area's transportation system (the TDLCB meets every other month). Members review local, regional, and statewide transportation issues and work cooperatively to determine appropriate policies and programs to address transportation needs.



The Volusia Transportation Planning Organization 2035 Long Range Transportation Plan was adopted on September 28, 2010.

THE VOLUSIA TPO BOARD

As outlined in Florida Statutes, the Volusia TPO Board is comprised of 19 voting members. In addition, five non-voting members serve on the Board. The non-voting members represent the Technical Coordinating Committee (TCC), Citizens' Advisory Committee (CAC), Bicycle/Pedestrian Advisory Committee (BPAC), Florida Department of Transportation (FDOT) District V Office and Volusia County School Board. These members are appointed primarily to provide information and recommendations to the Volusia TPO Board. The following list includes the Volusia TPO Board membership when this long range plan was adopted.

- COMMISSIONER RON VATH, *Flagler Beach*, **VTPO CHAIR**
- COMMISSIONER LEIGH MATUSICK, *DeLand*, **VTPO VICE-CHAIR**
- COMMISSIONER JOHN MCDONALD, *Beverly Beach*
- COMMISSIONER ROBERT GILLILAND, *Daytona Beach*
- MAYOR GREG NORTHRUP, *Daytona Beach Shores*
- COUNCIL MEMBER JACK LENZEN, *DeBary*
- COMMISSIONER JANET DEYETTE, *Deltona*
- COUNCILMAN TED COOPER, *Edgewater*
- COMMISSIONER LIZ TOWSLEY, *Holly Hill*
- COMMISSIONER RICK BASSO, *Lake Helen*
- VICE MAYOR LYNNE PLASKETT, *New Smyrna Beach*
- COMMISSIONER BILL MARCELLO, *Oak Hill*
- MAYOR FRED COSTELLO, *Ormond Beach*
- VICE MAYOR JEFF ALLEBACH, *Orange City*
- MAYOR JAMES SOWELL, *Pierson*
- VICE MAYOR KRIS DERR, *Ponce Inlet*
- VICE MAYOR MARY MARTIN, *Port Orange*
- COUNCIL MEMBER GEORGE LOCKE, *South Daytona*
- COUNTY CHAIR FRANK BRUNO, *Volusia County*
- COUNCIL MEMBER JOIE ALEXANDER, *Volusia County*
- COUNCIL MEMBER JACK HAYMAN, *Volusia County*
- COUNCIL MEMBER ANDY KELLY, *Volusia County*
- COUNCIL MEMBER PAT NORTHEY, *Volusia County*
- COUNCIL MEMBER JOSHUA WAGNER, *Volusia County*
- A.J. DEVIES, *BPAC Chairperson*
- PETER C. HAUSER, *CAC Chairman*
- BILL MCCORD, *TCC Chairman*
- MARY SCHOELZEL, *FDOT District V*
- DIANE J. SMITH, *Volusia County School Board*



INTRODUCTION

We know the next 25 years will bring very real challenges for our communities, including an aging population, increasing concerns over urban sprawl, and a significantly less predictable energy, environmental and economic picture. By developing a long range transportation plan, the Volusia Transportation Planning Organization (TPO) and its members strive to identify the mobility needs in our area and work together to develop a strategic approach that will best address those needs.

PURPOSE OF THE LONG RANGE TRANSPORTATION PLAN (LRTP)

The LRTP is the guiding document that identifies the transportation projects that may be pursued in the Volusia TPO planning area over the next 25 years using federal and state funds. The LRTP must provide a balanced, multi-modal approach to transportation solutions addressing the needs of the local communities. Federal law requires the Volusia TPO's Long Range Transportation Plan to be "Cost Feasible." In other words, the Volusia TPO must identify the anticipated federal, state, and local financial resources that will cover the costs of the projects identified in the plan. For this LRTP update, the Volusia TPO has assumed that a ½ cent Transportation Surtax will be in place by the year 2016. It should be recognized that the revenue estimated from the transportation surtax is a planning assumption and the actual implementation of such a measure must be approved by local voter referendum. In this plan, the revenue generated by the tax is primarily used to support the expansion of public transportation – buses, rail systems, trolleys, etc.

OVERVIEW OF LONG RANGE TRANSPORTATION PLANNING

Federal law requires that each Transportation Planning Organization (TPO) develop a Long Range Transportation Plan (LRTP) for their respective planning area that addresses, at a minimum, a 20-year planning horizon; the plan must be updated every five-years. The Volusia TPO planning area covers all of Volusia County and, due to the 2000 Census, the cities of Flagler Beach and Beverly Beach in Flagler County. The Volusia TPO recognizes that this activity is much more than a federal mandate; it provides us with an opportunity to develop a coordinated, long range approach for planning an effective transportation system.

Development of a LRTP is a lengthy and complex process that involves a variety of technical analyses and includes significant input from the public and our partner governments.



The activities required to develop this plan began in 2009 and spanned a two-year period. Throughout the process, the Volusia TPO has taken the opportunity to:

- *Take stock of our current resources and system limitations;*
- *Reach out to partner organizations and the public to identify future transportation challenges and opportunities;*
- *Define our collective plans and desires for the future; and*
- *Prioritize efforts and to seek opportunities for a cohesive development strategy.*

THE COMMUNITY WAS ENGAGED IN DEVELOPMENT OF THIS PLAN THROUGH:

13 Make Your Mark in 2035 events
Over 65 committee and board presentations
Numerous press releases and news media coverage
Promotion via the Internet
Two transportation surveys

VISION STATEMENT

Our transportation system will provide a safe and accessible range of options that enhances existing urban areas while providing mobility in a fiscally responsible, energy efficient and environmentally compatible manner. This integrated system will support economic development, allowing for the effective movement of people, goods, and services necessary to maintain and enhance our quality of life.

GOAL 1

Ensure that our transportation network considers the mobility needs of all user groups equally and is developed and managed in ways that foster safety and security.

GOAL 2

Develop transportation systems that contribute to the economic vitality of the region and ensure that they are designed, located and constructed in an environmentally sustainable manner.

GOAL 3

Consider the timing and location of transportation improvements to preserve and enhance existing urban areas and to recognize the development of our future.

GOAL 4

Develop an efficient transportation system that promotes a wide range of transportation options and integrates these options cohesively with the surrounding community.

GOAL 5

Develop a transportation system that most effectively utilizes the financial resources available and improves the quality of life for residents.

FINANCIAL RESOURCES

The TPO is required to identify the anticipated federal, state and local financial resources that will support completion of the projects proposed in the LRTP. The financial plan used for the 2035 LRTP update includes state and federal revenue estimates as provided by the Florida Department of Transportation (FDOT), local revenue estimates as provided by Volusia County and local revenue generated by a ½ cent Transportation Surtax (Charter County and Regional Transportation System Surtax as outlined in F.S. 212.055). As a planning tool, the presumption of a surtax allows the TPO to respond to local support in developing a comprehensive transit element for the LRTP. It is recognized that this decision will ultimately be made by the citizens of Volusia County by voter referendum and will not be available to support activities in Flagler and Beverly Beaches.



TABLE 3.1 - SUMMARY OF VOLUSIA TPO 2035 LRTP REVENUE ESTIMATES

CATEGORY	TIME PERIOD (BY FISCAL YEAR)					TOTAL (IN MILLIONS)
	2014-2015	2016-2020	2021-2025	2026-2030	2031-2035	
ROAD CONSTRUCTION						
State & Federal	14.4	97.2	107.3	114.2	122.2	455
Local Surtax *		15.6	16.5	17.7	19.1	69
Total						\$524
TRANSIT						
State & Federal		5.5	6.1	6.7	7.1	26
Local Surtax *		140.5	148.8	159.5	171.8	620
Total						\$646
LOCAL ROADS**		150.6	159.0	167.9	177.5	
Total						\$655

* The surtax is estimated to generate approximately \$30 million annually beginning in 2016.

** Revenue estimates for local roads were provided by the County of Volusia.

TRANSPORTATION OPTIONS

When considering the transportation needs for the Volusia TPO planning area in the year 2035, it becomes apparent that a variety of choices will be necessary to accommodate the needs of the community. Through the development of this LRTP, the Volusia TPO has reaffirmed its commitment to identify a broad range of transportation solutions as an essential means to achieve a well-balanced transportation system. This approach is responsive to the preferences communicated by the citizens who provided input to the plan and reflects a sustainable approach to future mobility.

ELEMENTS OF THE VOLUSIA TPO 2035 LRTP INCLUDE:

BICYCLE AND PEDESTRIAN PROGRAMS

The Volusia TPO engages in activities and events that not only support safe and accessible bicycling and walking, but adopts policies and implements programs that promote these activities. By dedicating 30% of the Extra Urban Attributable funds that are available to the TPO each year, the organization

encourages the development of facilities that provide the greatest benefit to the community.

PUBLIC TRANSPORTATION

The Volusia TPO has long supported Voltran, Volusia County's public transit service, by dedicating a transit planner to assist the organization in addition to dedicating 30% of the Extra Urban (XU) Attributable funds that are available to the TPO each year for capital purchases. The 2035 LRTP developed by the Volusia TPO includes a very strong mass transit element that reflects a move towards parity in funding with road improvements. Service in Flagler Beach and Beverly Beach is currently limited to paratransit operations. In the future, the Volusia TPO will look for opportunities to support the transit options desired in these communities.

ROADS AND BRIDGES

A primary component of the Volusia TPO's LRTP are the projects that improve the overall capacity of the transportation system. These include road and bridge projects on federal, state and local roads. The phased listing of transportation



projects in the 2035 L RTP includes highway projects that are prioritized by the FDOT, the Volusia TPO and Volusia County. The TPO also sets aside 40% of the Extra Urban (XU) Attributable funds available to the planning area to implement traffic management and intelligent transportation system improvements that help roadways function more safely and efficiently.

A LOOK TO OUR FUTURE

Although we are currently experiencing an economic slowdown, in the long range, population will continue to grow and development will occur. Figure 1 shows the population is projected to grow from 494,631 in 2005 (the base year for the plan) to 691,900 in the year 2035. Growth and development estimates for Beverly and Flagler Beaches were reviewed and documented by Flagler County.

In addition, employment growth is expected to increase from 198,754 in 2005 to 266,059 in 2035.



FIGURE 1

The challenge faced by many of our communities is how to balance anticipated growth with other goals such as protecting our environment and maintaining our quality of life. The Volusia TPO seeks to incorporate strategies associated with sustainable development and livability into its planning activities such as:

- *Developing transportation systems that reduce greenhouse gases, vehicle miles traveled and other negative impacts to our environment.*
- *Using a “complete streets” concept for roadways to ensure that our corridors serve the mobility needs of all users including pedestrians, bicyclists and transit riders, as well as automobiles.*
- *Coordinating land-use and development decisions with transportation system improvements.*





“MAKE YOUR MARK IN 2035”

This was an exercise that engaged the public to provide input for anticipated population growth over the next 25 years and to develop the necessary transportation infrastructure to support the distribution of that population. Thirteen sessions involving over 200 individuals were held between January and March of 2010.

PUBLIC SURVEYS

Two surveys were undertaken over a period of eight months. The first survey was made available in hard copy (distributed at TPO meetings and events) and through the 2035 LRTP project website. This survey was available between November of 2009 and April of 2010 and had 344 respondents. The second survey was a web-only survey posted from April to September 2010 that resulted in 589 responses.

LRTP WEBSITE | WWW.VCMPO2035LRTP.COM

This provided the public with information on planned activities, including the “Make Your Mark in 2035” sessions, LRTP Subcommittee meetings, planning activities that had occurred and access to the two LRTP surveys.

DEVELOPMENT OF THE VOLUSIA TPO 2035 LRTP

The Volusia TPO undertook two parallel approaches for developing the LRTP:

1. TECHNICAL ALTERNATIVE

This effort consisted of working with a Long Range Transportation Plan Subcommittee which consisted of members from existing TPO advisory committees. The LRTP Subcommittee assisted in identifying existing population and land uses, projected growth and future land use changes, and proposed transportation projects that would promote or support current and projected land uses and growth patterns.

2. PUBLIC ALTERNATIVE

This was a multi-level approach intended to enhance public involvement in the decision making process and maximize public input using the following strategies:



STRATEGIC INTERMODAL SYSTEM*

PROJECT	LIMITS	TYPE	YEAR OF CONSTRUCTION	COST ESTIMATE	PROJECT DESCRIPTION
1 I-95 Interchange	@ SR 421	interchange	2021-2025	\$ 36.0	
2 I-4 widen to 6 lanes	SR 44 to I-95	road	2021-2025	\$210.0	
3 I-95/I-4 Systems Interchange	@ I-95 & US 92	interchange	2031-2035	\$168.0	
4 I-95 widen to 6 lanes	SR 400 (Beville Road) to SR 44	road	2031-2035	\$ 70.0	
- I-95 widen to 6 lanes	Brevard County Line to SR 44	road	2010-2015		Brevard County project may be extended north under existing contract if funds are available (Res. 2012-03)
- I-4 widen to 10 lanes	Seminole County Line to SR 472	managed-use lanes	2021-2025	\$681.3	Public-private partnership (Res. 2012-12)
*Revenue estimates are developed by the Florida DOT and are not included in this plan.				TOTAL	\$1,165.3

STATE AND FEDERAL – OTHER HIGHWAY

PROJECT	LIMITS	TYPE	YEAR OF CONSTRUCTION	COST ESTIMATE	PROJECT DESCRIPTION
6 SR 415 - widen to 4 lanes w/ bridge	Reed Ellis Rd to Seminole County Line	road/bridge	2016-2020	\$51.1	
7 US 1 Intersection Improvements	Canal St., SR 421, Herbert St., Reed Canal Rd, Big Tree Rd, LPGA Blvd., Park Ave.	intersection	2015	\$ 9.0	
8 US 17 - widen to 4 lanes	SR 40 to Ponce DeLeon Blvd.	road	2016-2020	\$44.8	
9 SR 483 (Clyde Morris Blvd.) -widen to 6 lanes	Beville Road to US 92	road	2021-2025	\$66.4	
10 I-95 Interchange	@ US 1	interchange	2016-2020	\$11.9	Public-private partnership
11 SR 44 - miscellaneous road improvements	SR 15A to SunRail Station	road	2021-2025	\$19.1	
12 US 92 - widen to 6 lanes	I-4 to CR 415 (Tomoka Farms Road)	road	2021-2025	\$18.6	Public-private partnership
13 SR 472 - widen to 6 lanes	Graves Ave. to Kentucky/MLK Blvd.	road	2021-2025	\$26.2	Including I-4 overpass
14 Veterans Memorial (Orange Ave.) - replace	To Be Determined	bridge	2026-2030	\$64.8	
15 SR 44 - widen to 4 lanes	Voorhis Ave. to Kepler Road	road	2026-2030	\$ 4.5	
16 SR 40 - widen to 6 lanes	I-95 to Breakaway Trail	road	2031-2030	\$19.5	Public-private partnership
17 SR 40 - widen to 4 lanes	Cone Road to SR 11	road	2026-2030	\$69.4	
18 SR 40 - widen to 4 lanes	SR 11 to SR 17	road	2031-2035	\$69.2	
19 SR 40 - widen to 4 lanes	SR 17 to Lake County Line		2031-2035	\$49.6	
TOTAL				\$524.1	

MASS TRANSIT

PROJECT	LIMITS	TYPE	START YEAR	COST ESTIMATE		PROJECT DESCRIPTION
				CAPITAL	OPERATING	
A Added Bus Service DeBary/DeLand	West Volusia area to DeBary & DeLand SunRail Stations	bus	2015	\$0.00	\$ 0.00	Added bus service to support SunRail operations. Service is funded by the Florida Department of Transportation for first 7 years.
B Added Rail Station Daytona Beach Area	Daytona Beach	rail	2015	\$0.00	\$ 0.00	Support of intercity rail service by Amtrak along the Florida East Coast rail line. Project will be funded through a federal grant.
C Added Bus Service US 1 Corridor	Port Orange - Ormond Beach	bus	2016	\$1.76	\$26.90	Improve the frequency of existing service on US 1.
D Added Bus Service SR 40 (Granada Blvd) to SR 421 (Dunlawton Ave)	SR 40 (Granada Blvd) to SR 421 (Dunlawton Ave)	bus	2016	\$1.17	\$17.93	Improve the frequency of existing service on SR 40A and expand seasonal trolley service to year around.
E Added Bus Service Cross-county	Daytona Beach to DeLand	bus	2018	\$1.84	\$24.76	Improve the frequency of cross-county service on US 92 and extend routes to the SunRail Station in 2020.
F Added Bus Service East Volusia	Port Orange to Ormond Beach	bus	2018	\$2.46	\$33.02	Improve the frequency of service in Port Orange and Ormond Beach and add night and Sunday routes in Port Orange.
G Added Bus Service West Volusia	Crown Center to Northgate Plaza	bus	2018	\$1.84	\$24.76	Improve the frequency of service in West Volusia operating along US 17/92.
H Added Bus Service Daytona Beach	Daytona Beach International Airport to Transfer Plaza	bus	2018	\$1.84	\$24.76	Improve the frequency of service in the core areas of Daytona Beach.
I Added Bus Service Cross county	New Smyrna Beach to DeLand	bus	2018	\$1.23	\$16.51	Start a new service that will improve access across Volusia County in the southern portion of the county via SR 44.
J Added Bus Service Deltona Circulator	Deltona Area	bus	2020	\$1.29	\$15.02	Improve the frequency of service in the City of Deltona.
K DeLand Trolley Circulator	Downtown DeLand to Rail Station (SunRail/Amtrak)	bus	2020	\$1.94	\$22.52	Start a new trolley bus circulator system in the downtown DeLand area with increased service for the local area and to the rail station.
L Daytona Area Trolley Circulator	Downtown Daytona (International Speedway Boulevard)	bus	2020	\$2.58	\$30.03	Start a new trolley service providing direct connections to key destinations and increased frequency of service via a downtown circulator system.
M Added Bus Service Rural Northwest	Pierson to Crescent City	bus	2020	\$1.29	\$15.02	Restore and expand service in north west Volusia (Route 24)
N Commuter Rail (Sunrail) Expansion	DeBary Station to DeLand Station	rail	2020	\$0.00	\$ 0.00	Extend Sunrail commuter rail service to the DeLand Amtrak Station as outlined in the existing project plans & agreements.
O DeLand Rail Spur	DeLand Amtrak Station	rail	2025	\$13.40	\$ 9.61*	Connect the SunRail station (DeLand Amtrak station) to downtown DeLand along the existing rail spur.
P Transit Corridor/ Bus Rapid Transit	DeLand	bus	2030	\$34.50	\$24.78*	Add enhanced transit connections between East and West Volusia County.
Q Commuter Rail Service	DeBary to County Line	rail	2013	\$0.00	\$0.00	A funding agreement is already in place for the capital and operating costs of this project. It is included for information purposes.
TOTAL				\$67.1	\$285.6	

*Project capital costs presume federal funding (local match is 25%).

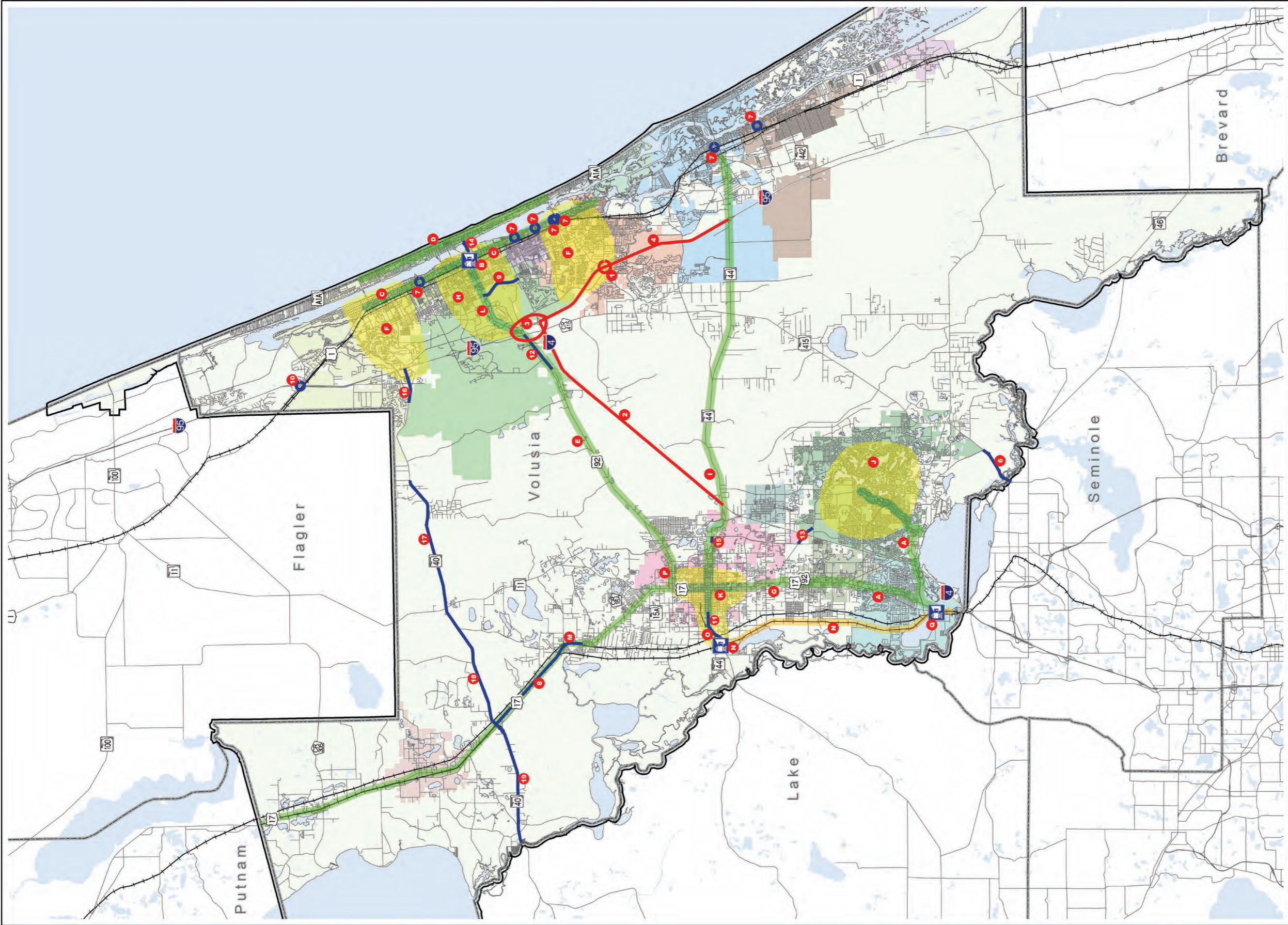
CONSOLIDATION OF LRTP ALTERNATIVES

The LRTP Subcommittee reviewed the two alternatives, technical and public, for consistencies and created a combined project list. The listing of proposed projects and their associated costs, based on estimated year of construction, were evaluated based on a variety of criteria. A draft plan was then developed, refined and submitted for recommendation and approval to the TPO's advisory committees and the TPO Board. The project listings by category and map locations are included in this summary.

FINAL COMMENT AND ADOPTION

The Volusia TPO staff held four public meeting sessions to seek final public comments on the draft 2035 Long Range Transportation Plan. The Volusia Transportation Planning Organization 2035 Long Range Transportation Plan was adopted by the Board on September 28, 2010.





**Volusia TPO
2035 Long Range
Transportation Plan
Cost Feasible Projects**



Road Improvements by Transportation System

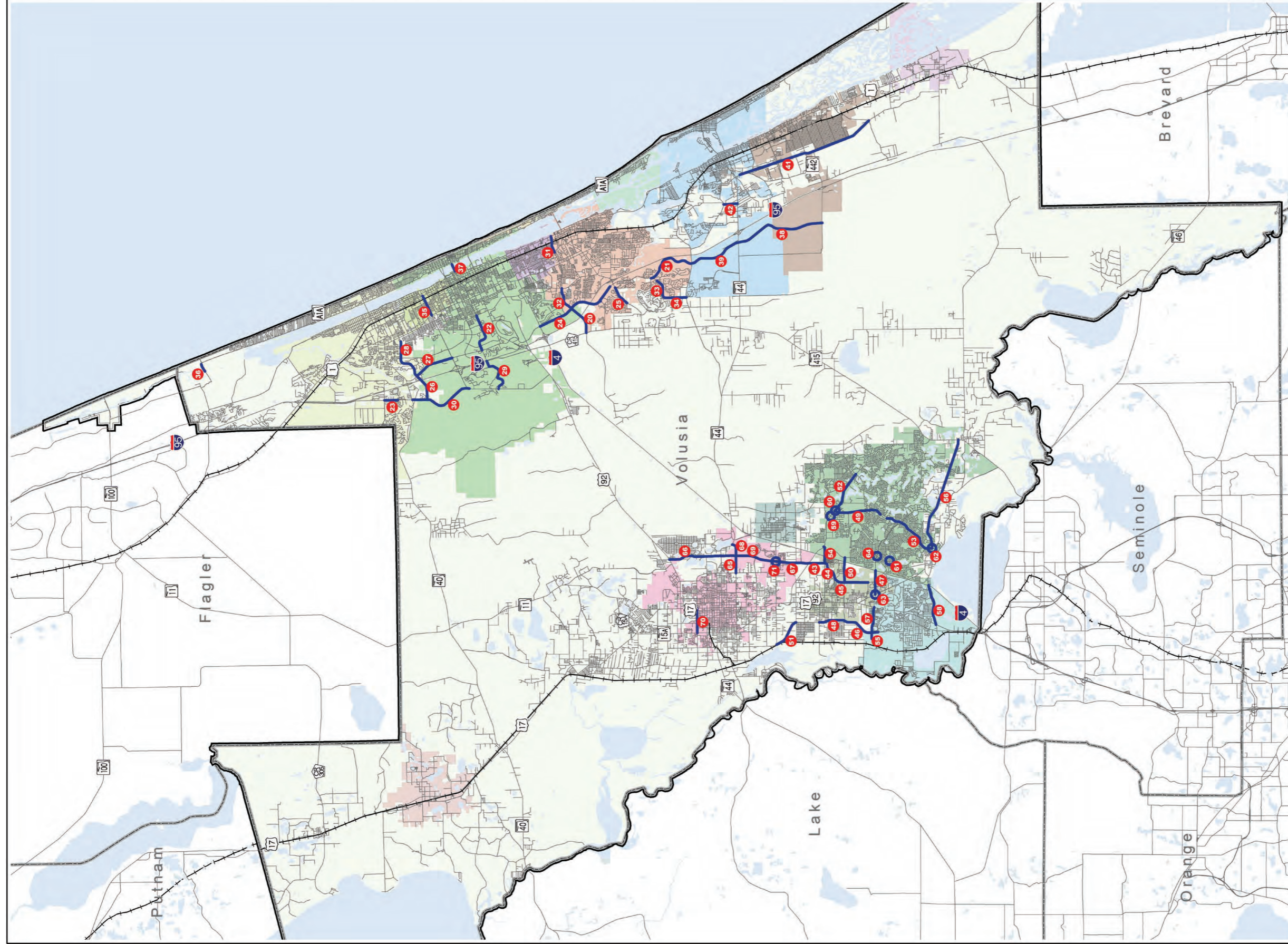
- 24** numbers refer to road & bridge project lists
- Strategic Intermodal System (SIS) projects
- State and Federal - Other Highway projects
- State and Federal intersection projects



0 2.5 5 10
Miles

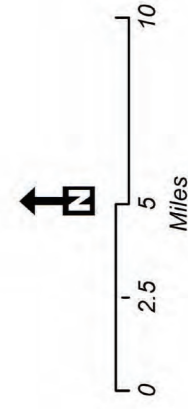
Mass Transit Improvements

- A** letters refer to mass transit projects list
- bus corridor
- bus service area
- rail corridor
- commuter/passenger rail station



**Volusia TPO
2035 Long Range
Transportation Plan
Local Road Projects**

- 23 numbers refer to road & bridge project lists
- local roads
- intersections



LOCAL ROAD PROJECTS (FEDERAL AID ELIGIBLE)

PROJECT	LIMITS	COST	LOCATION
YEARS 2015/16 THROUGH 2019/2020			
23	Tymber Creek Road - widen to 4 lanes	Peruvian to Airport	\$10.0 Ormond Beach
47	Saxon Blvd - widen to 6 lanes	Enterprise Rd to I-4	\$7.8 Orange City
28	Hand Ave - widen to 4 lanes	Williamson to Nova Road	\$15.0 Ormond Beach
52	Howland Blvd - widen to 4 lanes	Providence Blvd to Elkcam Blvd	\$13.0 Deltona
54	Graves Ave - widen to 4 lanes	Veterans Memorial Pkwy to SR 472	\$3.0 Orange City
66	Westside Beltway/Kepler Rd - widen to 4 lanes	SR 44 to US 92	\$16.5 DeLand
71	Intersection Improvements	Orange Camp - MLK	\$2.5 DeLand
60	Intersection Improvements	Howland - Providence	\$2.5 Deltona
63	Intersection Improvements	Saxon - Enterprise	\$2.5 Orange City
YEARS 2020/21 THROUGH 2024/25			
50	Rhode Island Ave. - extend as 2 lane road with overpass at I-4	Veterans Memorial Pkwy to Normandy Blvd	\$15.0 Orange City/Deltona
27	Williamson Blvd - widen to 4 lanes	LPGA Blvd to Hand Ave	\$10.0 Daytona Beach
33	Airport Road - widen to 4 lanes	Sabal Creek to Creekside Middle	\$8.4 Port Orange
30	Tymber Creek Road - extend as 2 lane road	SR 40 to LPGA Blvd	\$18.0 Ormond Beach
21	Williamson Blvd - extend as 4 lane road	Airport Rd to Pioneer Trail	\$9.3* Port Orange
43	Westside Bltwy/Kentucky Ave - widen to 4 lanes	Graves to SR 472	\$4.0 Orange City
44	Westside Bltwy/Veterans Memorial Pkwy. - realign	Veterans Memorial Pkwy to Kentucky Ave.	\$1.9 Orange City
45	Westside Bltwy/Vet's Memorial Pkwy-widen to 4 lanes	Graves to Harley Strickland	\$15.0 Orange City
68	Beresford Ave - extend road	Kepler Rd to SR 44	\$4.8 DeLand
70	Plymouth Ave - widen to 3 lanes	SR 15A to US 17/92	\$7.5 DeLand
65	Beresford Ave - extend road	Blue Lake Ave to Kepler Rd	\$5.4 DeLand
YEARS 2025/26 THROUGH 2029/30			
67	Westside Bltwy/Martin Luther King-widen to 4 lanes	Orange Camp Rd to SR 472	\$10.2 DeLand
31	Madeline Ave. - extend as 2 lane road	Sauls to US 1	\$7.0 Port Orange
48	Westside Pkwy - extend road	French Ave to Rhode Island Ave. (extension)	\$7.5 Orange City
38	Williamson Blvd - extend road	SR 44 to SR 442	\$27.6 New Smyrna Beach
53	Providence Blvd - widen to 4 lanes	Tivoli Drive to Doyle Road	\$18.0 Deltona
55	Saxon Blvd Extension - extend road	Rail Station to Westside Parkway	\$3.6 Orange City
57	Saxon Blvd Extension - extend road	Westside Parkway to US 17/92	\$7.8 Orange City
58	Dirksen Drive - widen to 4 lanes	US 17/92 to I-4	\$12.0 DeBary
42	Colony Park Road - extend as 2 lane road	Current terminus (SR 44) to Pioneer Trl.	\$4.2 New Smyrna Beach
22	Dunn Ave - widen to 4 lanes	Williamson Blvd to Clyde Morris Blvd	\$12.0 Daytona Beach
24	Williamson Blvd - widen to 4 lanes	Beville Road to Pavilion DRI	\$25.8 Port Orange
25	Taylor Road - widen to 4 lanes	Summertrees to Forest Preserve Blvd	\$6.0 Port Orange
26	Hand Ave.- extend road	Williamson Blvd to Tymber Creek Rd (extension)	\$17.5 Ormond Beach
34	Airport Road - widen to 4 lanes	Creekside Middle to Pioneer Trail	\$8.4 Port Orange
37	Main Street Bridge replacement		\$50.0 Daytona Beach
64	Intersection Improvements	Saxon - Normandy	\$2.5 Deltona
59	Intersection Improvements	Catalina - Howland	\$2.5 Deltona
61	Intersection Improvements (City of Deltona)	Normandy - Deltona	\$2.5 Deltona
62	Intersection Improvements	Providence - Doyle	\$2.5 Deltona
YEARS 2030/31 THROUGH 2034/35			
29	Dunn Ave extension	Tomoka Farms Rd to LPGA Blvd	\$25.0 Daytona Beach
32	Madeline Ave - widen to 4 lanes	Williamson Blvd to Clyde Morris Blvd	\$7.5 Port Orange
35	LPGA Blvd - widen to 4 lanes	Nova Rd to US 1	\$9.9 Holly Hill
51	Westside Pkwy - extend road	McGregor Rd to Hamilton Av	\$9.0 DeLand
69	Westside Beltway/Kepler Rd - extend road	SR 44 to Orange Camp Rd	\$16.2 DeLand
41	Southeast Volusia North-South Connector Road	Old Mission (@ Josephine) to Volco Rd	\$42.0 Edgewater
20	Madeline Ave - extend road with bridge at I-95	Williamson Blvd to Tomoka Farms Road	\$13.4 Port Orange
39	Williamson Blvd - extend as 2 lane road	Pioneer Trail to SR 44	\$15.6 New Smyrna Beach
56	Doyle Road - widen to 4 lanes	Providence Blvd to SR 415	\$36.0 Deltona
46	Westside Pkwy - extend road	Rhode Island Ext to Donald Smith Blvd	\$13.5 Orange City
49	Providence Blvd - widen to 4 lanes	Howland Blvd to Fort Smith Blvd	\$14.4 Deltona
36	Knox Bridge Replacement		\$25.0 Ormond Beach
*Project cost was modified in February 2011		TOTAL	\$627.2

TRANSPORTATION SURTAX

As mentioned previously, the 2035 Long Range Transportation Plan assumes that a locally approved ½ cent Transportation Surtax will be in place by the year 2016. This revenue stream was included as a direct result of public input in support of enhanced transit opportunities in order to develop a transportation infrastructure that will address the needs of the communities in the year 2035. Below is the language adopted by the TPO Board on May 25, 2010 regarding the Transportation Surtax.

APPROACH FOR DEVELOPING THE 2035 LRTP

The Volusia Transportation Planning Organization (TPO) supports a referendum so that Volusia residents can determine whether or not to pursue a locally generated revenue source as the financial basis for the implementation of enhanced transit service in Volusia County. Based upon public input, recent planning activities by local governments and public/private initiatives, the Volusia TPO Board recognizes that there is a significant benefit to developing enhanced transit services. Such services, however, will require additional funding that is not currently available. In addition, the Board further recognizes that the citizenry of Volusia County will, through referendum, make the final determination as to whether this initiative will be implemented.



The referendum details included in the ultimate financial decision will NOT be made at the TPO planning level. The federal government requires the Long Range Transportation Plan (LRTP) to be financially feasible. As such, it is contemplated that a local sales tax would be used as the dedicated revenue source to fund transportation projects, transit, as well as road projects. For the purposes of developing the Volusia TPO 2035 LRTP, the TPO Board agrees that the revenues generated by such a funding source will be allocated towards supporting existing mass transit commitments and developing an enhanced transit system. If a future dedicated revenue source is approved by the public, the Volusia TPO Board acknowledges that the actual distribution of revenue will be determined by the most appropriate government arrangement.

Special recognition and appreciation is extended to the following members of the Volusia TPO 2035 LRTP Subcommittee. These individuals spent many hours directing and overseeing the work required to complete this effort.

LRTP SUBCOMMITTEE MEMBERS

JOHN DECARIE, BPAC, LRTP SUBCOMMITTEE CHAIR

BOBBY BALL, CAC

GILLES BLAIS, CAC

HEATHER BLANCK, TCC

FRANK BRUNO, TPO BOARD

JON CHENEY, TCC

DAN D'ANTONIO, CAC

A.J. DEVIES, BPAC

TOMM FRIEND, CAC

BARBARA GOLDSTEIN, TDLCB

BLANCHE HARDY, TCC

FERD HEEB, CAC

CHAD LINGENFELTER, TCC

MIKE MARCUM, TCC

BILL MCCORD, TCC

RON PARADISE, TCC

ELAINE WILSON, BPAC





2570 W. International Speedway Blvd., Suite 100
Daytona Beach, FL 32114-8145
386-226-0422 (voice)
386-226-0428 (fax)
www.volusiatpo.org