

# The River to Sea Transportation Planning Organization



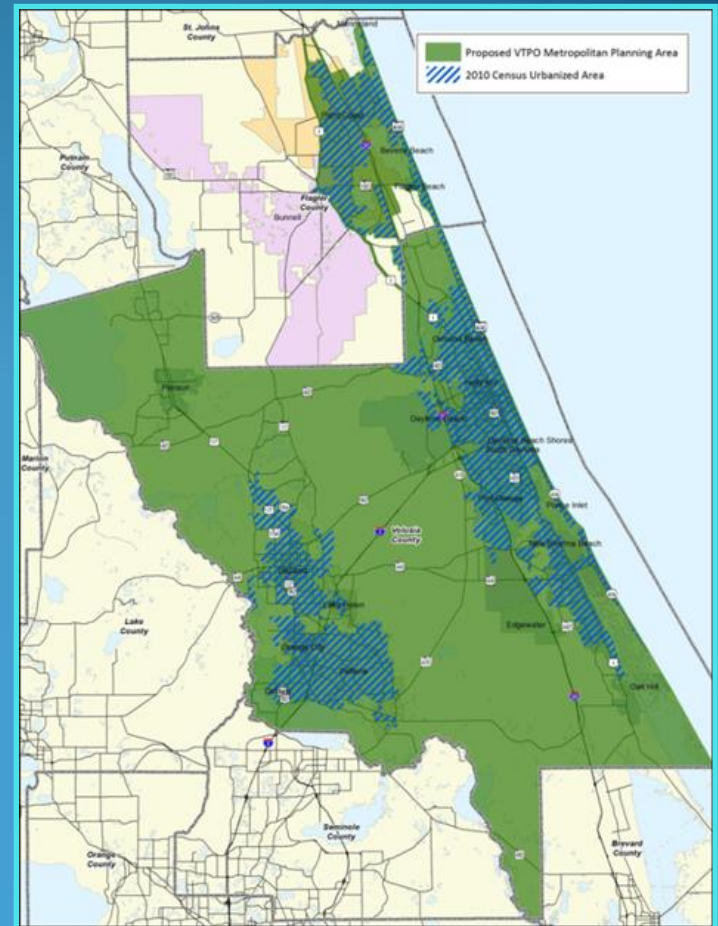
## 2045 Long Range Transportation Plan

June 26, 2019



# 2045 Long Range Transportation Plan

- TPO is required by federal and state law to develop an LRTP and update every five years
- Guiding document that identifies transportation projects over the next 25 years
- Consider public input
- Establishes transportation vision
- Determines allocation of funds and must be Cost Feasible
- Adopt by September 23, 2020



# 2045 Long Range Transportation Plan

- **General Project Approach**

- Build from 2040 LRTP
- Collect data on current conditions
- Utilize studies already conducted
- Use traffic model to forecast demand
- Conduct public outreach
- Consider alternative scenarios
- Forecast revenue
- Develop needs assessment
- Identify and prioritize improvements in a cost feasible plan

# 2045 Long Range Transportation Plan

- Task 1 – Project Management and Coordination
- Task 2 – Public Involvement Activities
- Task 3 – Performance Based Planning
- Task 4 – Data Compilation and Review
- Task 5 – Travel Demand, Forecast Modeling and Scenario Planning
- Task 6 – Revenue Forecasts
- Task 7 – Environmental Analysis
- Task 8 – Needs Assessment Development
- Task 9 – Cost Feasible Plan Development
- Task 10 – Final Plan Documentation

# 2045 Long Range Transportation Plan

- **Task 2 - Public Involvement Activities**

- Public Participation Plan
- Public Workshops
- Stakeholder and Focus Group Meetings
- Social Media - LRTP Branding
- LRTP Subcommittee
- Presentations to TPO Board and Advisory Committees
- Coordination with Local Government Agencies
- Coordination with FDOT/FHWA

# 2045 Long Range Transportation Plan

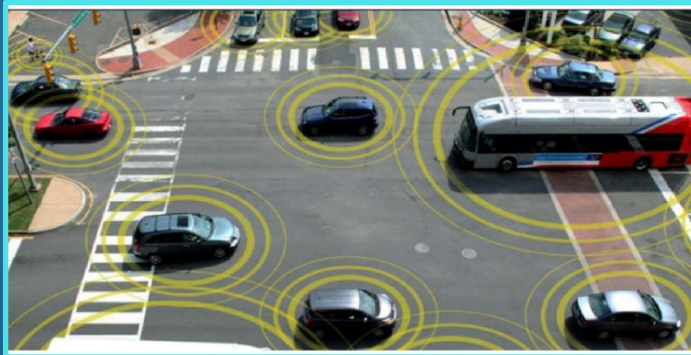
- **Task 3 – Performance Based Planning**
  - Goals, Objectives, and Performance Measures
  - Evaluation Criteria and Weights
  - Transportation Performance Management





# 2045 Long Range Transportation Plan

- Task 5 – Travel Demand, Forecast Modeling and Scenario Planning
  - High Investment in Technology
  - Variations in Funding
  - Addressing Resiliency and Sea Level Rise



# 2045 Long Range Transportation Plan

- **Task 7 – Environmental Analysis**
  - Transportation planning decisions both directly and indirectly influence the health and well being of people and on the built and natural environment
  - Consider all affected populations when making responsible planning decisions
  - Assess the impacts of projects on the natural environment and historic and cultural resources





# Questions?

River to Sea TPO LRTP Project Manager

Colleen Nicoulin, AICP, RSP

Phone: 386-226-0422 ext. 20417

E-Mail: [cnicoulin@r2ctpo.org](mailto:cnicoulin@r2ctpo.org)

