

St. Johns River to Sea (SJR2C) Loop Project Development & Environment (PD&E) Study

**ALONG US 1 OR ALTERNATIVE ROUTE
FROM SR 44 (LYTLE AVENUE) TO BEVILLE ROAD
VOLUSIA COUNTY, FLORIDA**

Financial Project ID No: 439865-1-22-01

**CITIZEN'S ADVISORY COMMITTEE (CAC)
TECHNICAL COORDINATING COMMITTEE (TCC)
PRESENTATION | March 20, 2018**



Purpose of Briefing

- Provide background information
- Introduce the project
- Outline the study objectives and schedule
- Share information about the project
- Receive input

Purpose of a Trail

- Promote nonmotorized travel, increase mobility, improve connectivity, enhance economic prosperity, and promote healthy living
- Used by bicyclists, pedestrians, skaters, runners and others
- Paved facility physically separated from motorized vehicular traffic by an open space or barrier and is either within the highway right-of-way or an independent right of way
- Not to replace on-street bicycle lanes



What is a PD&E Study?

PD&E stands for Project Development and Environment and is conducted to meet the requirements of the National Environmental Policy Act (NEPA)

- Prepared to determine social, natural, cultural and physical impacts associated with a project. Provides the following information:
 - ❑ Need for the project
 - ❑ Benefits and impacts to the community and environment
 - ❑ Design options
 - ❑ Cost
- Work with the public to receive input and identify the best solution. Several outreach opportunities include:
 - ❑ Website with project updates
(CFLRoads.com; search by number 439865-1)
 - ❑ Newsletters
 - ❑ Public workshops and meetings

What issues are addressed in PD&E Study?

☐ **Social Impacts**

- Right-of-way
- Residential
- Business
- Community services and facilities

☐ **Cultural Impacts**

- Historic and archaeological sites
- Recreational sites

☐ **Natural Impacts**

- Wetlands
- Water quality
- Animal habitat

☐ **Physical Impacts**

- Visual and aesthetics
- Contamination
- Drainage
- Utilities

☐ **Costs**

- Right-of-way
- Construction
- Mitigation

When the study is complete, one of two recommendations is made:

- ☐ 'No-Build' Alternative
- ☐ 'Build' Alternative

Shared Use Non-Motorized (SUN) Trail Program

- Provides funding for the development of a statewide system of paved multi-use trails (SUN Trail network) for bicyclists and pedestrians
- For funding and maintaining projects within the SUN Trail network, the Department allocates in its program a minimum of \$25 million annually
- The SUN Trail network is the paved component of the Florida Greenways and Trails System (FGTS) Priority Land Trail Network
- Program will not fund components such as sidewalks, nature trails, and development of amenities associated with trail projects
- Funded projects shall be operated and maintained by an entity other than FDOT upon of construction, and FDOT is not obligated to provide funds for the operation and maintenance.

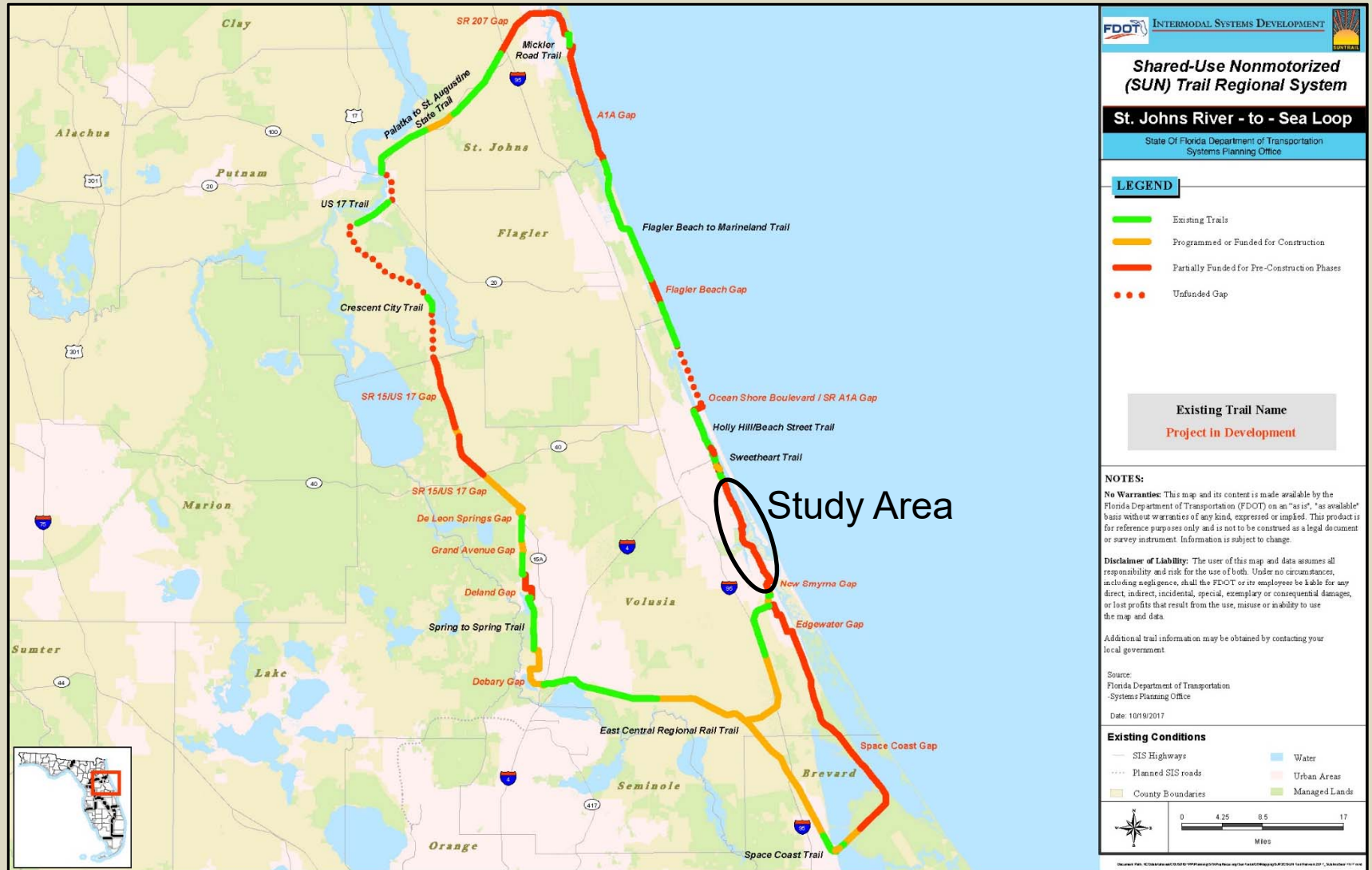


Shared Use Non-Motorized (SUN) Trail Program

- FDOT defines multi-use trail as a paved, shared-use path
- Typically 12 feet wide
- May vary 10 feet to 14 wide
- As narrow as 8 feet in extremely constrained areas (such as bridges or environmentally sensitive lands)
- The FGTS Plan establishes Florida's vision for a statewide trail network and the framework for systematically closing trail gaps and connecting priority corridors through coordinated planning efforts of both public and private partners

Further info available at <http://www.floridasuntrail.com>

SUN Trail Regional System – SJR2C



Project Location



- St. Johns River to Sea (SJR2C) Loop
- US 1 or Alternative Route from SR 44 (Lytle Avenue) to Beville Road
- Approximately 12.5 miles in length
- Volusia County
- New Smyrna Beach, Port Orange, South Daytona

Purpose and Need

- **Develop and evaluate options for a multi-use trail along US 1 or alternative route from SR 44 (Lytle Avenue) to Beville Road**
 - Close existing trail gap
- **Project is needed for system linkage**
- **Once complete, trail will connect:**
 - Edgewater, New Smyrna Beach, Port Orange, South Daytona, Daytona Beach, and parts of unincorporated Volusia County



Summary of Challenges

- Limited R/W
- Utilities
- Trail Connectivity
- Crossing of Florida East Coast Railway (FECR)
- Conflicts with traffic and pedestrians
- Environmental impacts at bridges and causeways
- Existing bridges – insufficient width to accommodate new trail
- Drainage
- Constructability
- ADA compliance (driveway conflicts)
- Consideration to Section 106 resources



FECR Crossing



Historic Resources

PD&E Study Components

- **Engineering** – analyze data and identify solutions
- **Environmental** – evaluate potential impacts to the natural, social, and physical environments
- **Public Involvement** – ongoing throughout the process



Engineering & Environmental Analysis

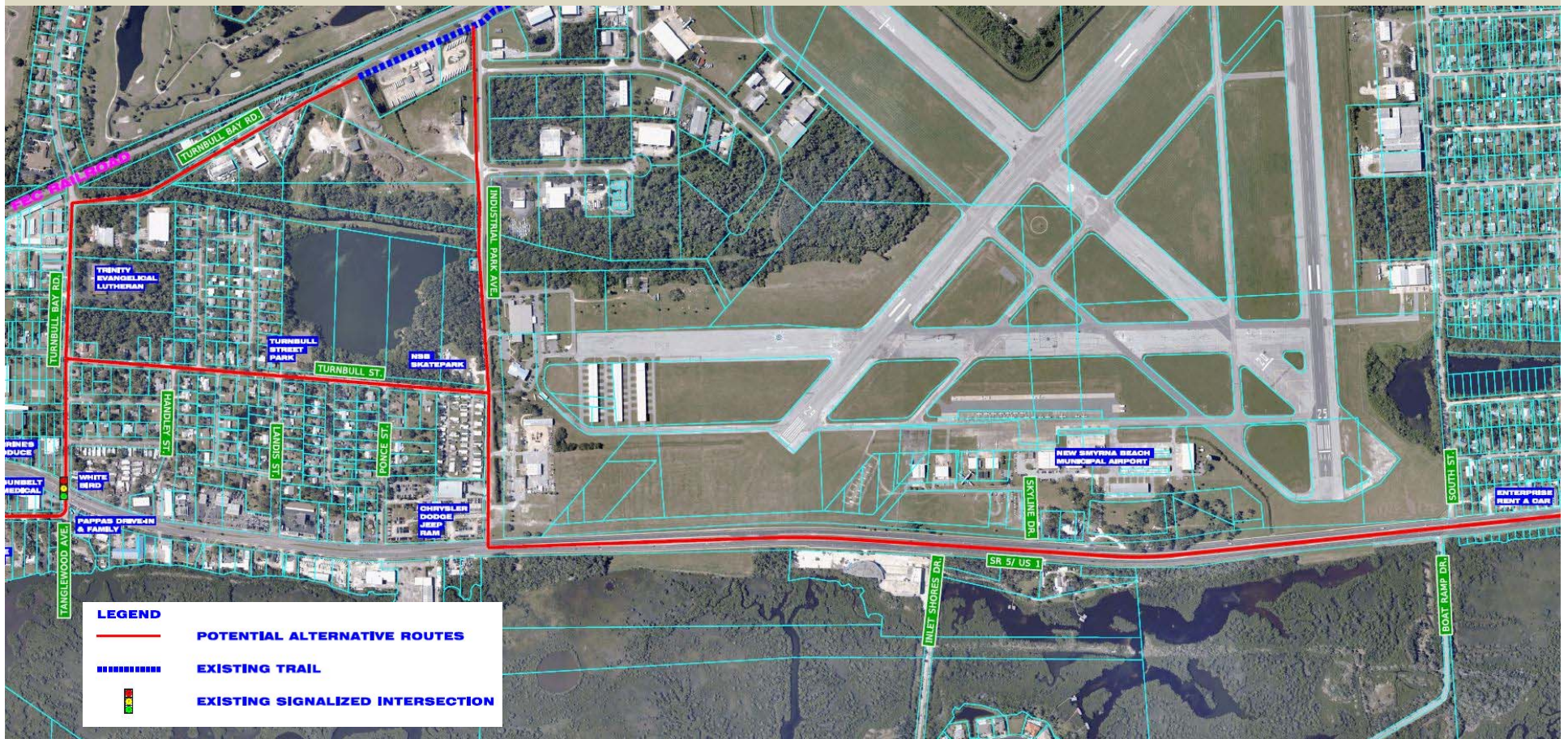
- Pedestrian Crash Data
- Existing bicycle/pedestrian conditions
- Identification of wetlands
- Threatened/Endangered species
- Existing land use & property information
- Existing & planned developments
- Existing drainage
- Contamination sites
- Archeological/Historical sites



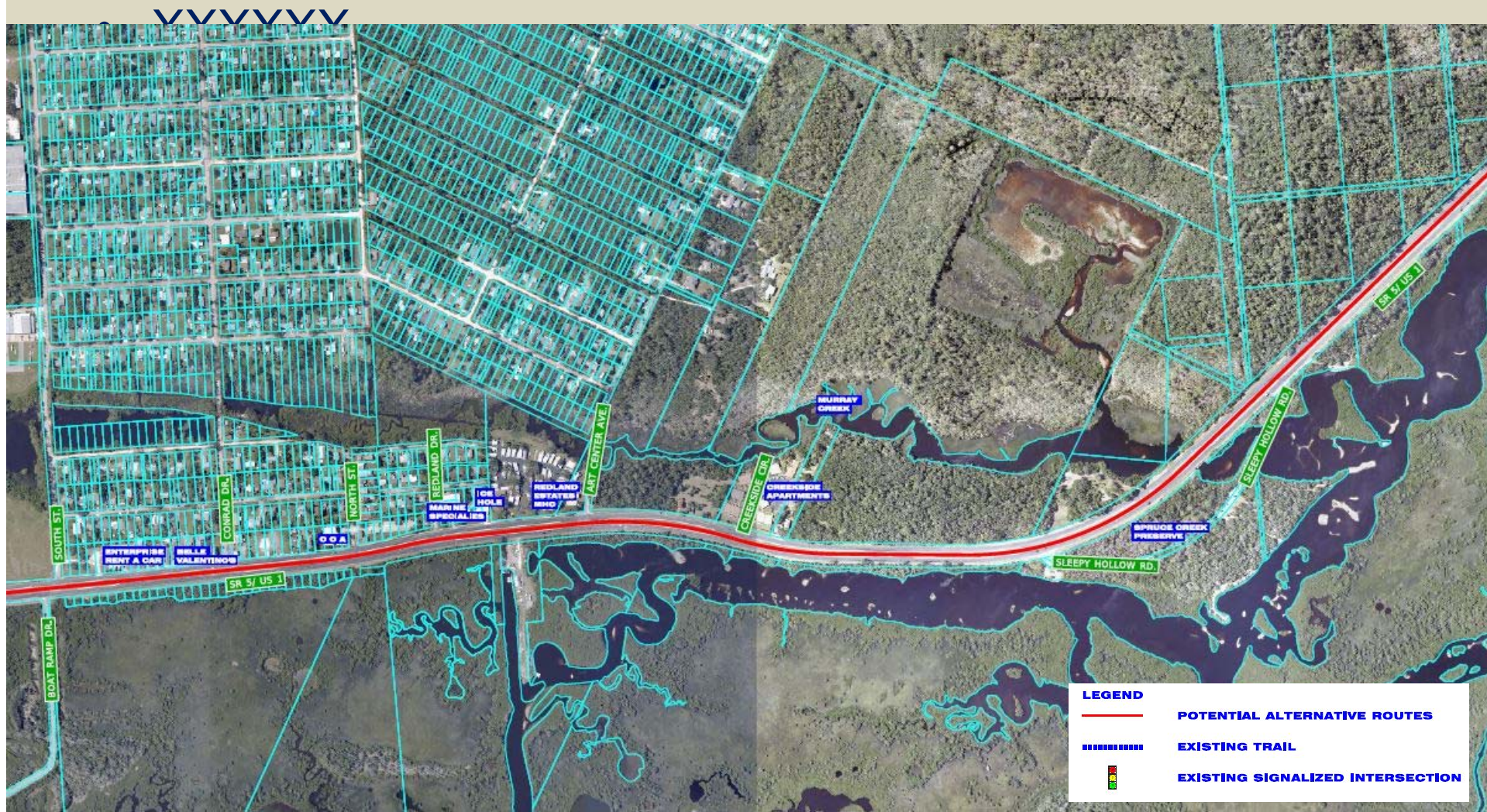
Corridor Alternatives – New Smyrna Beach



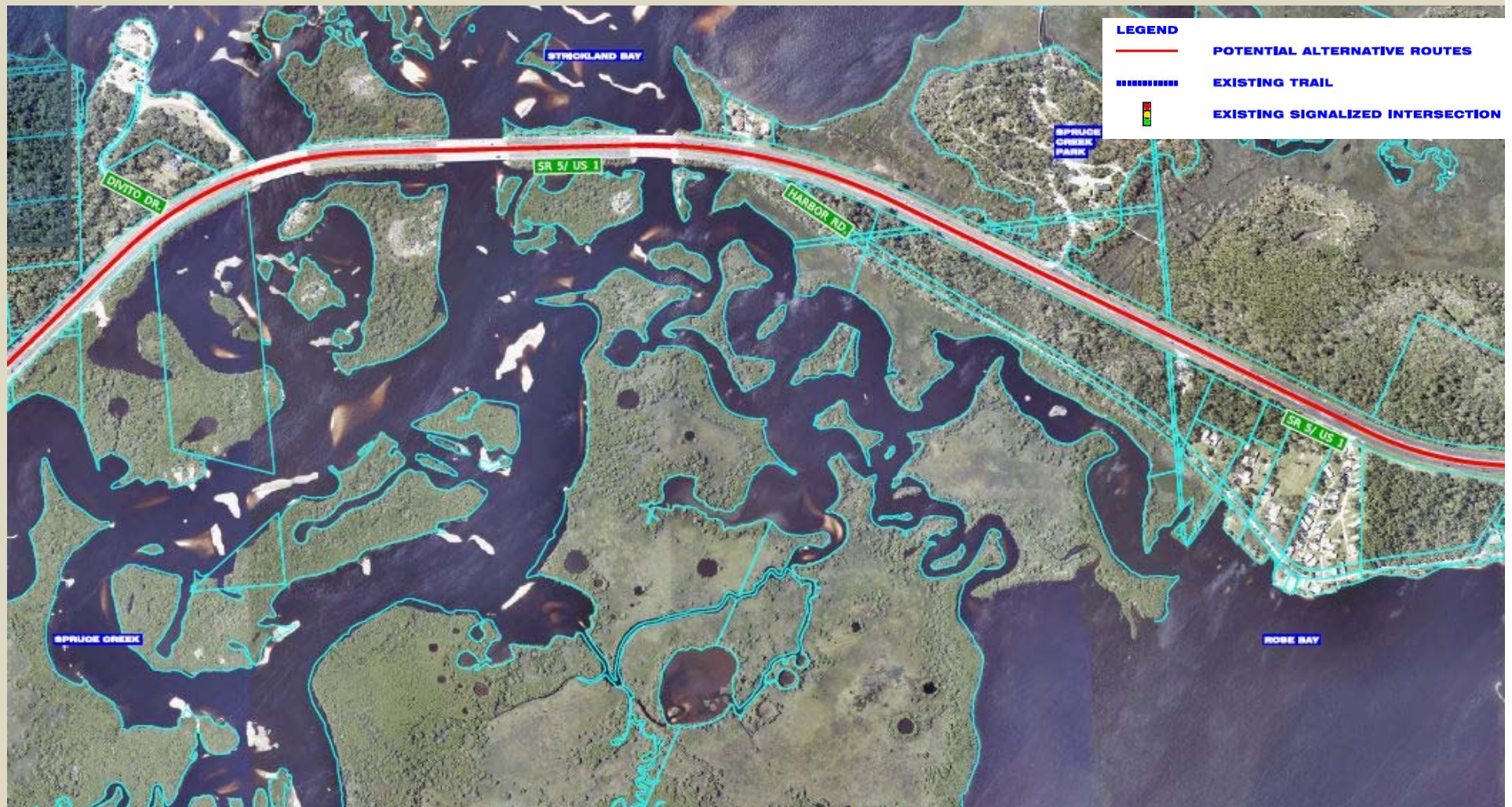
Corridor Alternatives – New Smyrna Beach



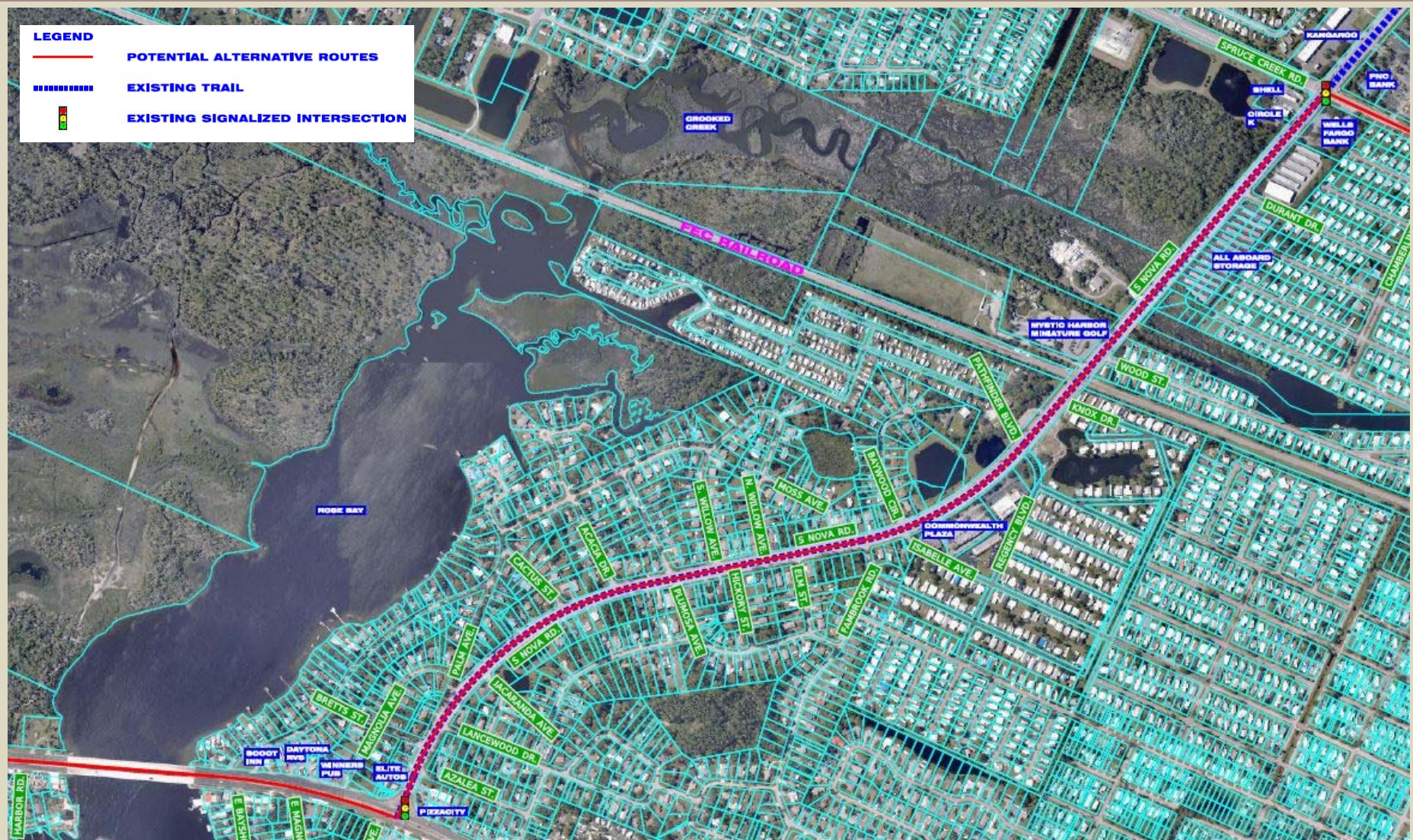
Corridor Alternatives – New Smyrna Beach



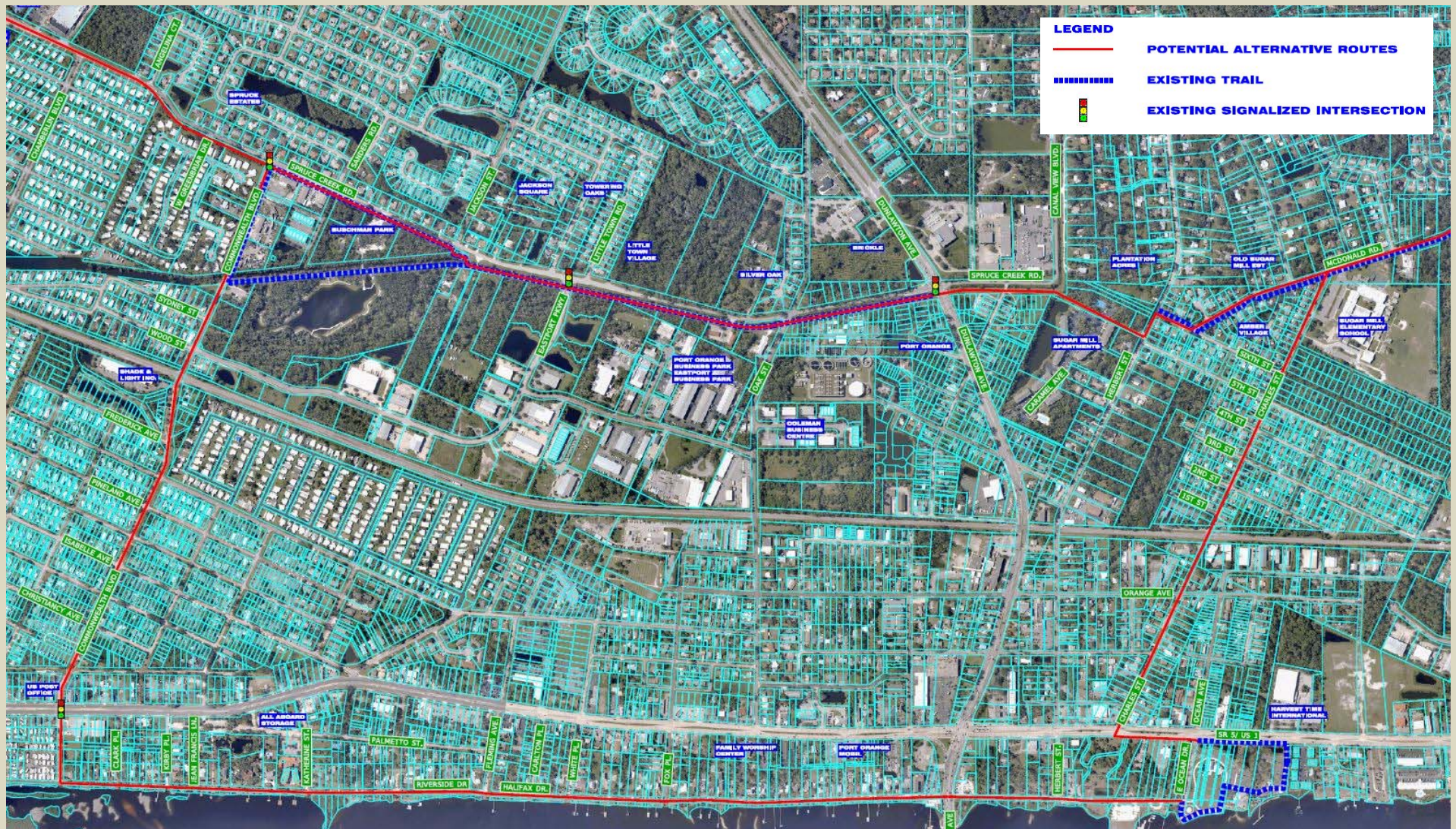
Corridor Alternatives – New Smyrna Beach & Ponce Inlet



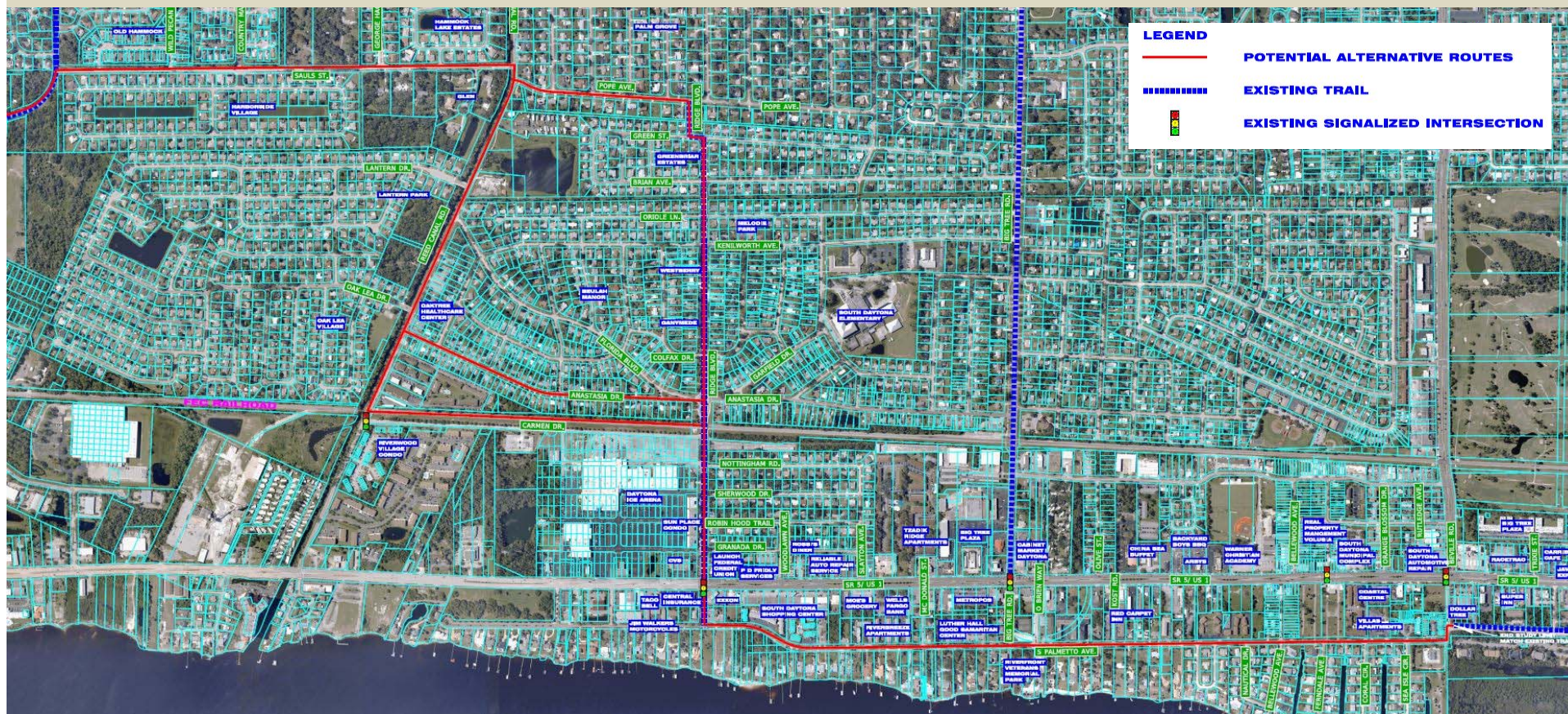
Corridor Alternatives – Port Orange



Corridor Alternatives – Port Orange



Corridor Alternatives – South Daytona



Stakeholder Coordination

Jurisdictions

- City of New Smyrna Beach
- City of Port Orange
- City of South Daytona
- City of Ponce Inlet
- Unincorporated Volusia County

Local Interests

- Elected Leaders (local, state, and federal)
- Property Owners
- Business Owners & Managers
- Neighborhoods (including Harbor Oaks)
- Trail and Bicycle Groups (River to Sea Loop Alliance, East Coast Greenway Alliance)
- Civic Groups (Safe Routes to School, NSB for Smart Growth, Port Orange-South Daytona Chamber, Southeast Volusia Chamber)
- Places of Worship
- Utilities (NSB Utilities)



Stakeholder Coordination

U.S. Federal Government

- U.S. Coast Guard
- U.S. Army Corps of Engineers
- Federal Aviation Authority
- U.S. Fish and Wildlife Service

State of Florida

- Department of Transportation
- Department of Environmental Protection
- Department of Economic Opportunity
- Fish and Wildlife Conservation Commission

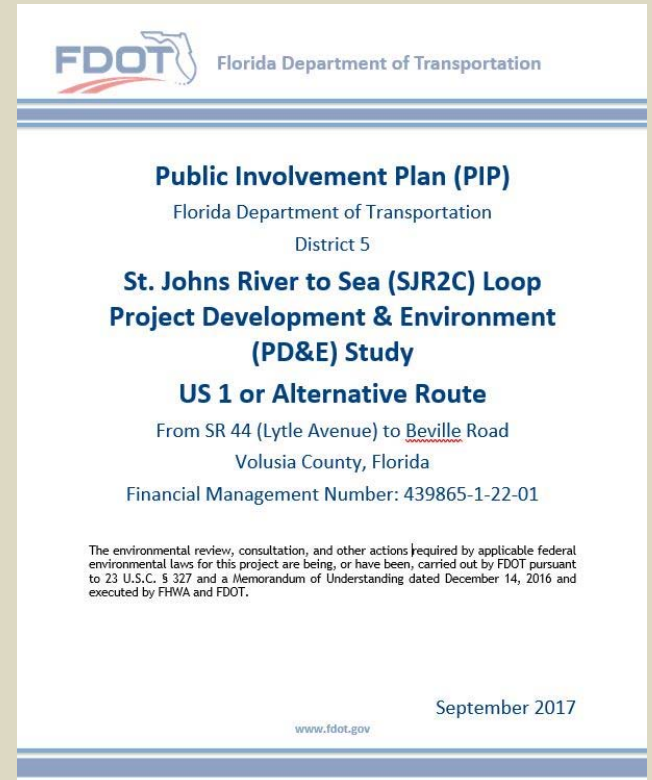
Regional Agencies

- River to Sea Transportation Planning Organization
- East Central Florida Regional Planning Council
- St. Johns River Water Management District
- Florida East Coast Railway
- Volusia County
 - Public Schools
 - NSB Fire Department and Fire Station #53
 - Planning and Development
 - Public Works
 - School Board
 - Parks, Recreation and Culture
 - Traffic Engineering
 - Engineering and Construction
 - Economic Development
 - Votran



Public Involvement

- Public Involvement Plan
- Meetings with Agencies
- Local Government Coordination
- Meetings with the Public
 - Public Kick-off Meetings Held January 10 & 11, 2018
- Project Website
- <http://www.cflroads.com>
(search 439865-1)

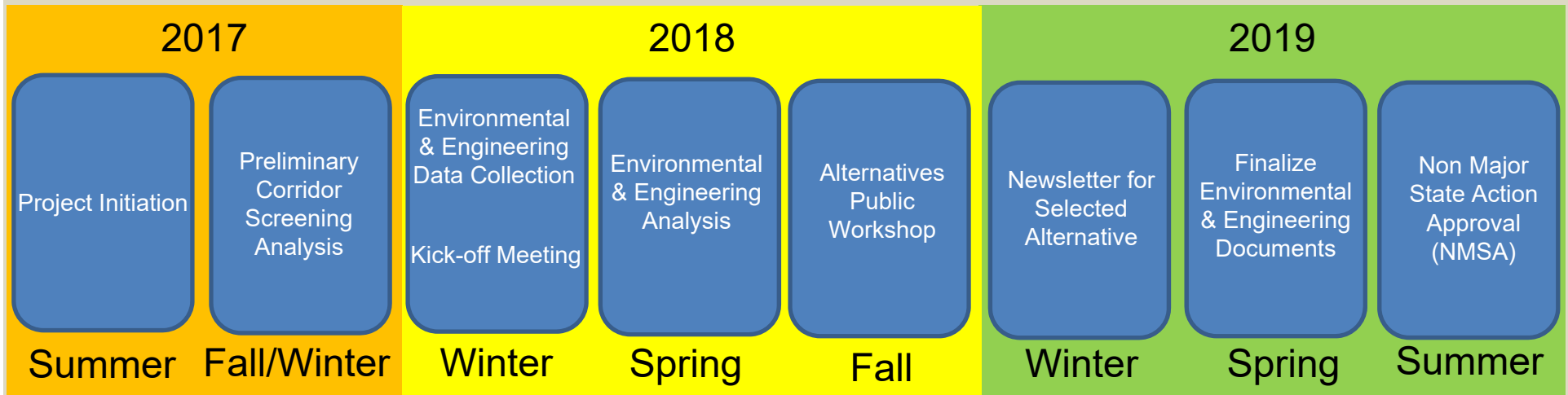


Key Public Comments

- January 10, 2018 Kick-off Meeting
 - Convert N. Riverside Dr. to One-Way (NSB)
 - Environmental impacts
 - Landscaping, bicycle racks, and restrooms
 - “Not in my front yard”
- January 11, 2018 Kick-off Meeting
 - Keep along Halifax Drive
 - Separation of trail from roadway
 - Incorporate Reed Canal Road
 - Connect to recreational and historic sites
 - Keep along Palmetto Avenue

Study Schedule and Funding

- **Began Study: June 28, 2017**
- **Receive District approval of Non Major State Action (NMSA) (study completion): June 2019**



- **Future phases include:**
 - **Design (Funded 2019)**
 - **Right-of-Way (if applicable) (currently not funded)**
 - **Construction (currently not funded)**

Contact Information

FDOT Project Manager

Heather Grubert, P.E.

(386) 943-5540

Heather.Grubert@dot.state.fl.us

FDOT, District Five

719 South Woodland Boulevard

DeLand, Florida 32720