



Regional Trails Corridor Assessment

STAKEHOLDERS WORKSHOP #2

DATE & TIME:

Wednesday, December 17, 2014

9:00AM to 11:00AM

Presentation at 9:15AM

LOCATION:

R2CTPO Offices

Indigo Professional Center

2570 West International

Speedway Boulevard, Suite 100

FORMAT:

Presentation at 9:15AM, followed by Interactive Group Review of Findings

Workshop is free and open to the public.



Project Contacts

Steve Cote - RS&H Project Manager

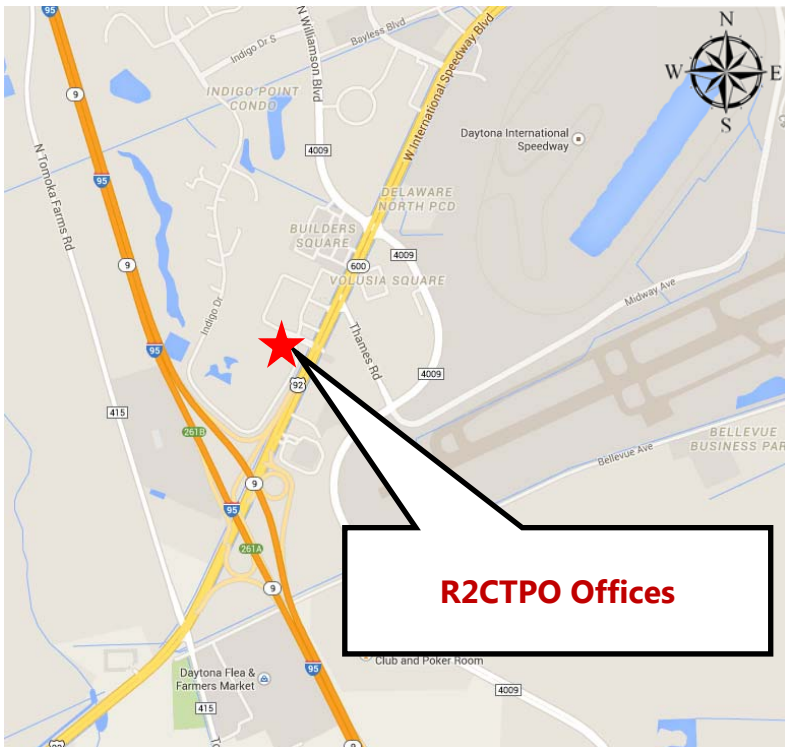
Phone: 678.528.7220

Email: steve.cote@rsandh.com

Jean Parlow - TPO Project Manager

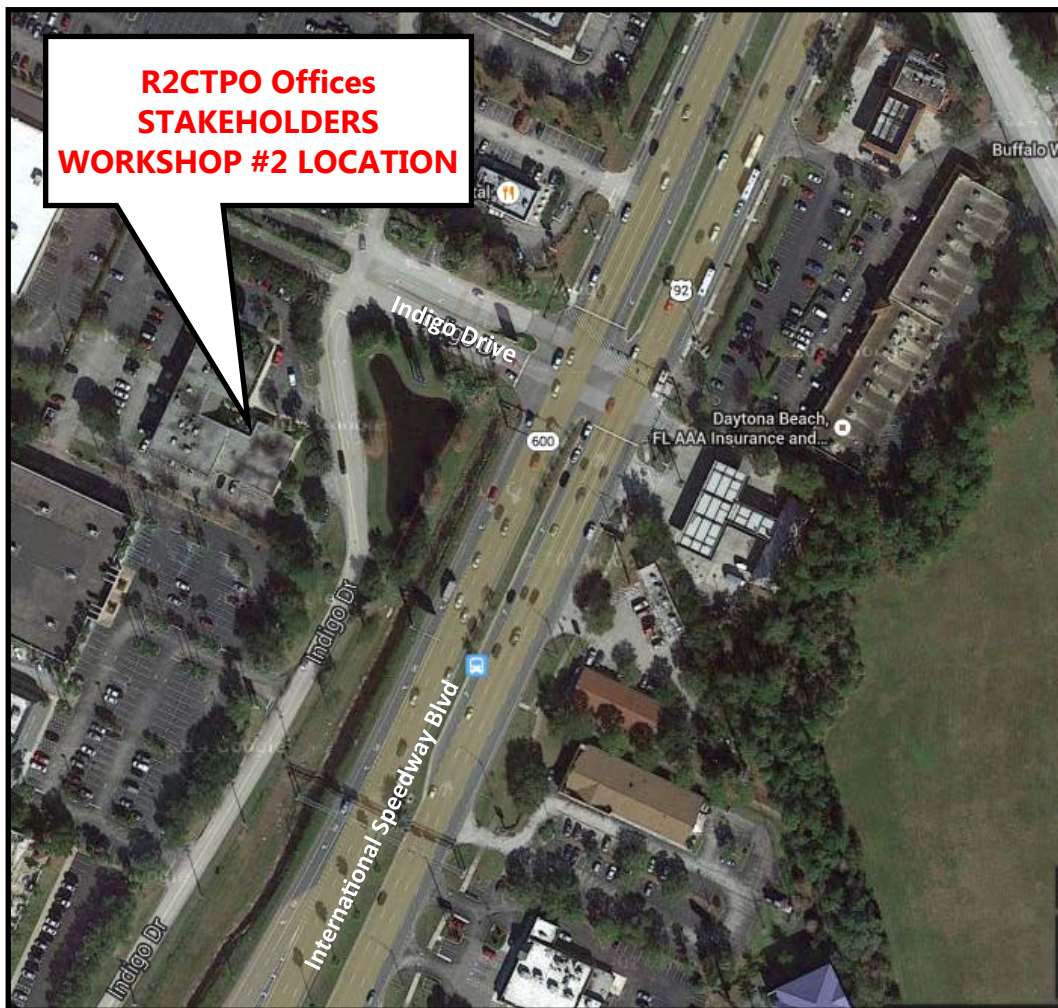
Phone: 386.226.0422, ext. 20417

Email: jparlow@r2ctpo.org



PROJECT DESCRIPTION

The River to Sea TPO, in coordination with the Florida Department of Transportation, is undertaking an assessment of regional trails to better understand trail gaps and opportunities for new alignments to be included in the State of Florida Office of Greenways and Trails 2015 update. The goal of this Study is to enhance coordination and better position our region for future funding. For the purposes of this study, a regional trail is a multi-use, paved trail separated from the roadway that is a minimum of 10' wide and crosses, or is intended to cross, through more than one jurisdiction.



Public participation is solicited without regard to race, color, national origin, age, sex, disability or family status. Persons who require special accommodations under the Americans with Disabilities Act or persons who require translation services (free of charge) should contact Steve Cote, by telephone at 678-528-7220, or via email at steve.cote@rsandh.com, at least seven days prior to the meeting.