

FLOODPLAIN

WETLANDS

PROPERTY LINE

PROPOSED ROW LINE

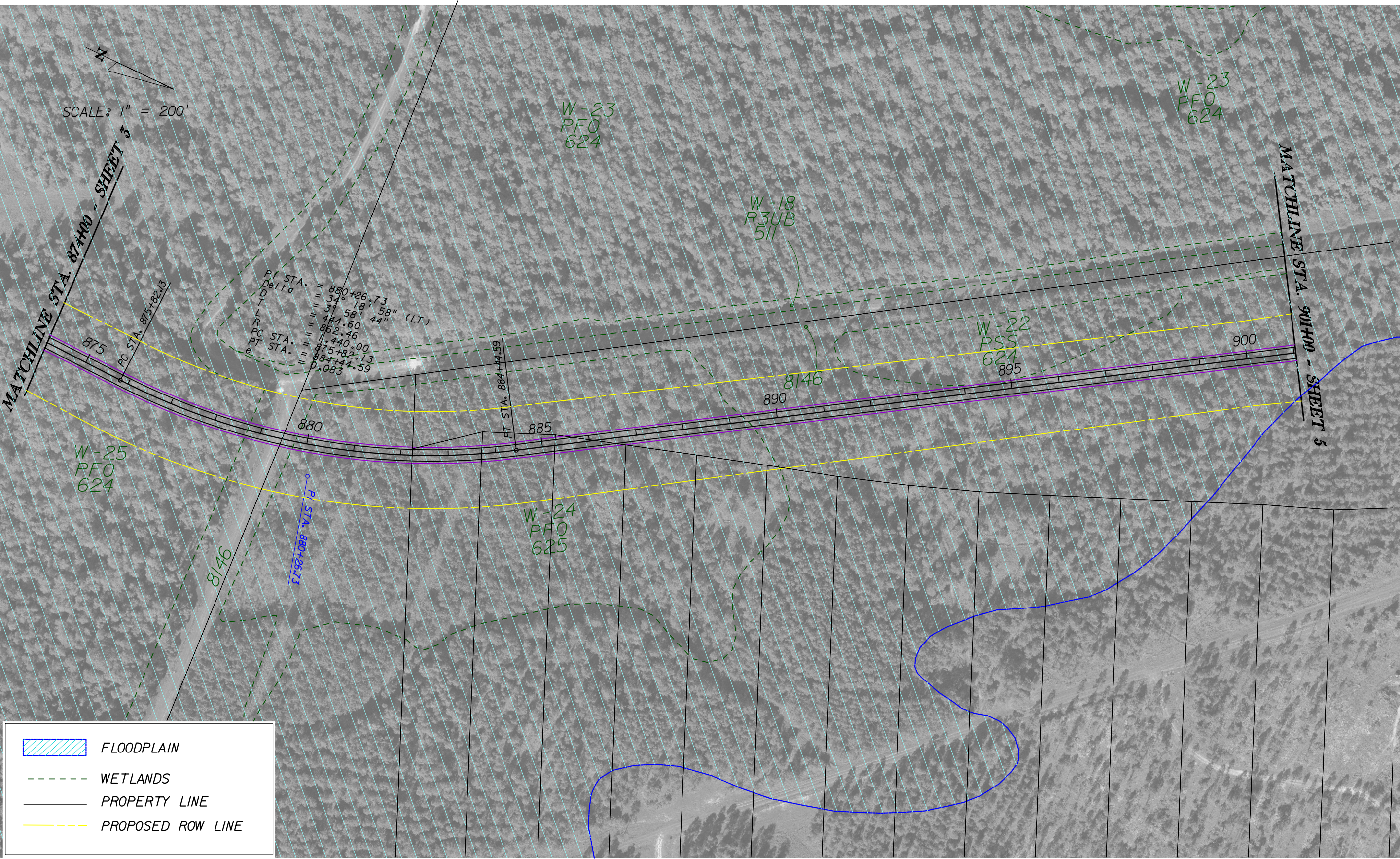
REVISIONS					
DATE	BY	DESCRIPTION	DATE	BY	DESCRIPTION

John R. Freeman, JR., P.E., PTOE
P.E. License No. 25730
Kittelson & Associates, Inc.
315 E. Robinson St., Suite 465
Orlando, Florida 32801
Certificate of Authorization No 00007524

STATE OF FLORIDA DEPARTMENT OF TRANSPORTATION		
ROAD NO.	COUNTY	FINANCIAL PROJECT ID
	VOLUSIA	410252-1-22-01

LPGA BLVD. PD&E STUDY
ALIGNMENT B3
STA 847+00 TO 874+00

SHEET NO.
3 of 12



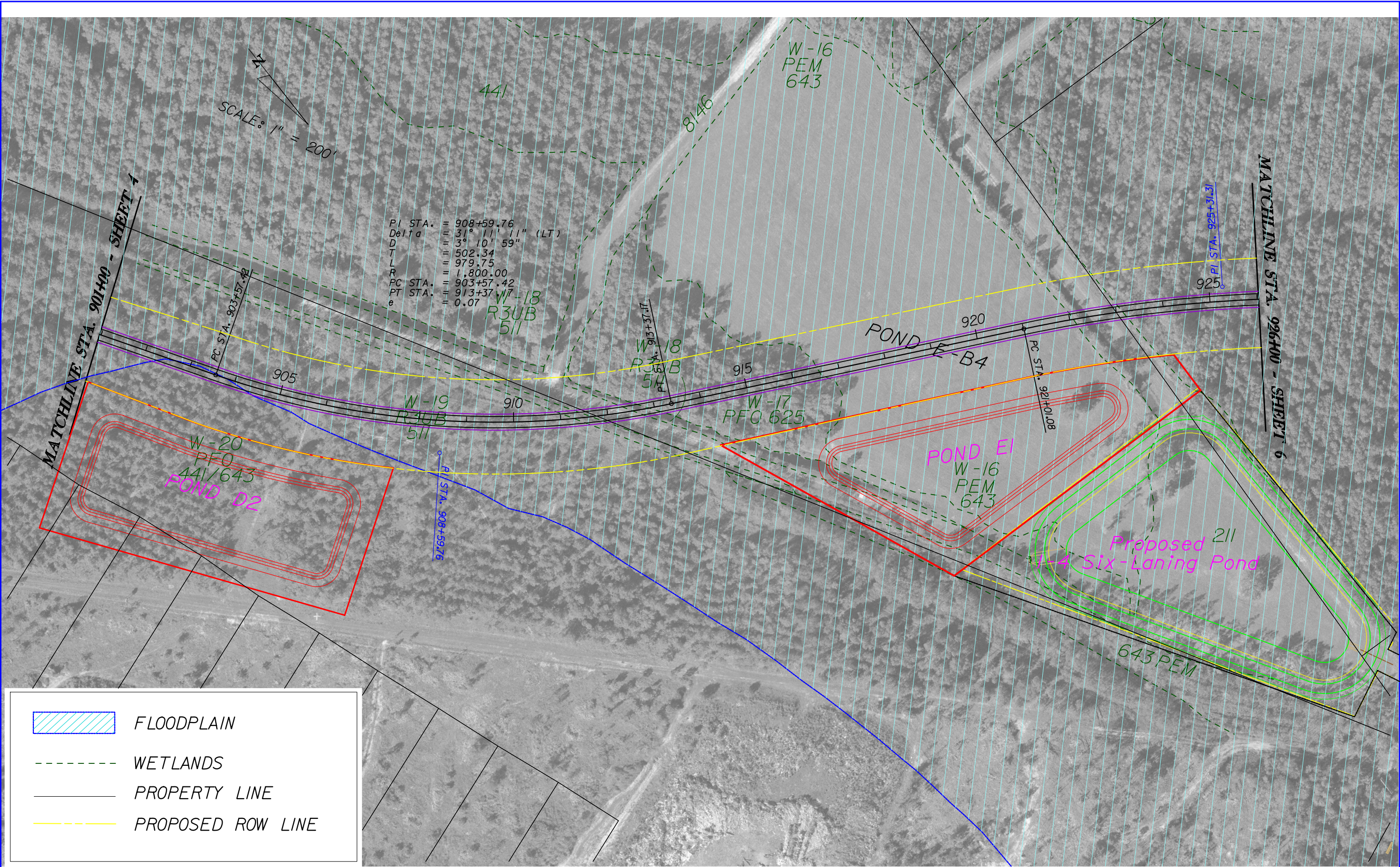
FLOODPLAIN

WETLANDS

PROPERTY LINE

PROPOSED ROW LINE

REVISIONS						STATE OF FLORIDA DEPARTMENT OF TRANSPORTATION	LPGA BLVD. PD&E STUDY ALIGNMENT B3 STA 874+00 TO 901+00		SHEET NO. 4 of 12
DATE	BY	DESCRIPTION	DATE	BY	DESCRIPTION				
						ROAD NO.	COUNTY	FINANCIAL PROJECT ID	
					John R. Freeman, JR., P.E., PTOE P.E. License No. 25730 Kittelson & Associates, Inc. 315 E. Robinson St., Suite 465 Orlando, Florida 32801 Certificate of Authorization No 00007524		VOLUSIA	410252-1-22-01	



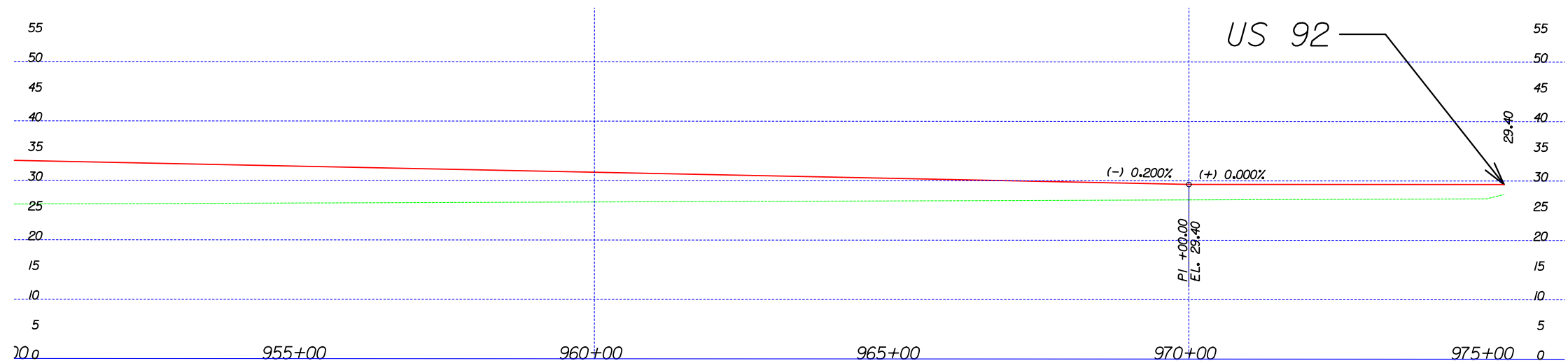
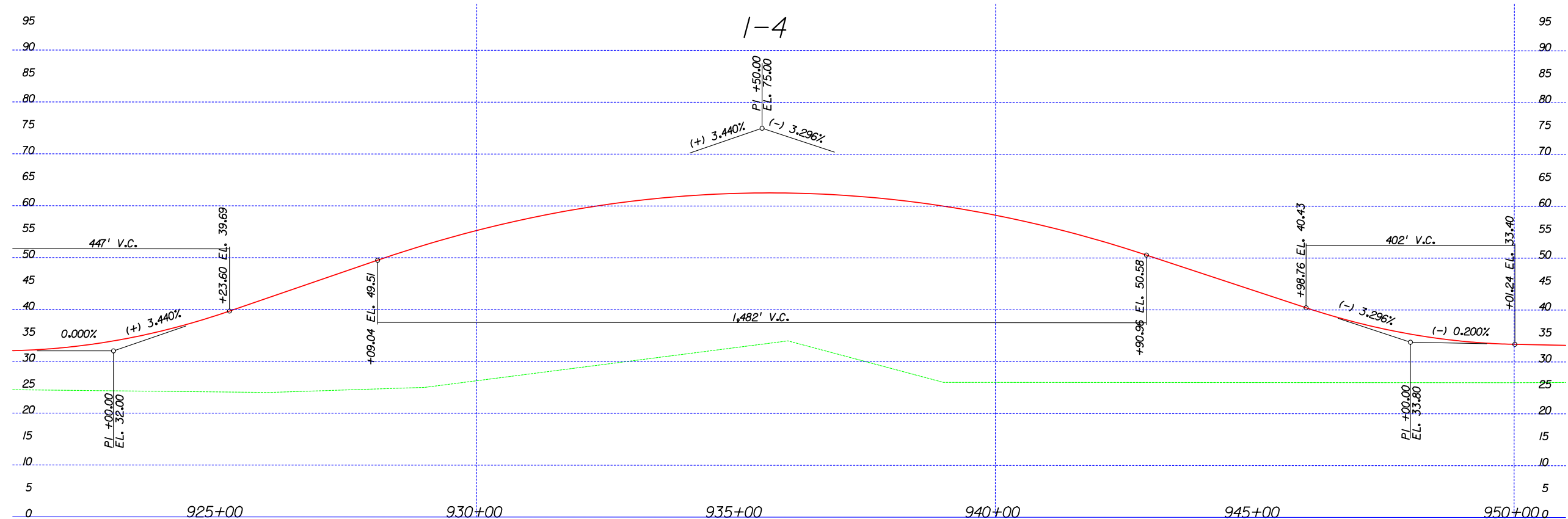
FLOODPLAIN

WETLANDS

PROPERTY LINE

PROPOSED ROW LINE

REVISIONS						John R. Freeman, JR., P.E., PTOE P.E. License No. 25730 Kittelson & Associates, Inc. 315 E. Robinson St., Suite 465 Orlando, Florida 32801 Certificate of Authorization No 00007524	STATE OF FLORIDA DEPARTMENT OF TRANSPORTATION		LPGA BLVD. PD&E STUDY ALIGNMENT B3 STA 901+00 TO 926+00		SHEET NO. 5 of 12
DATE	BY	DESCRIPTION	DATE	BY	DESCRIPTION						



REVISIONS						John R. Freeman, JR., P.E., PTOE P.E. License No. 25730 Kittelson & Associates, Inc. 315 E. Robinson St., Suite 465 Orlando, Florida 32801 Certificate of Authorization No 00007524	STATE OF FLORIDA DEPARTMENT OF TRANSPORTATION			LPGA BLVD. PD&E STUDY VERTICAL PROFILE B3 STA 921+36.55 TO 975+91.63		SHEET NO.
DATE	BY	DESCRIPTION	DATE	BY	DESCRIPTION							
												3 of 3

Appendix H

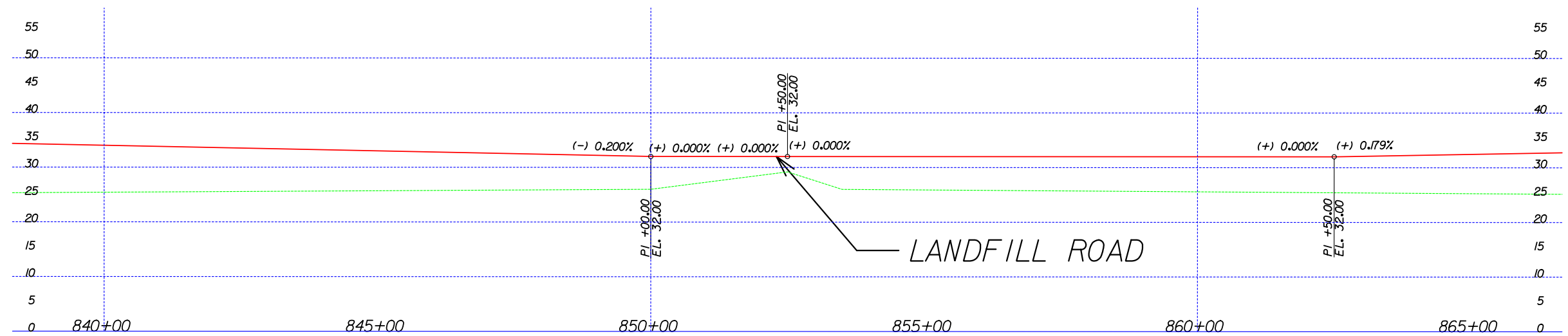
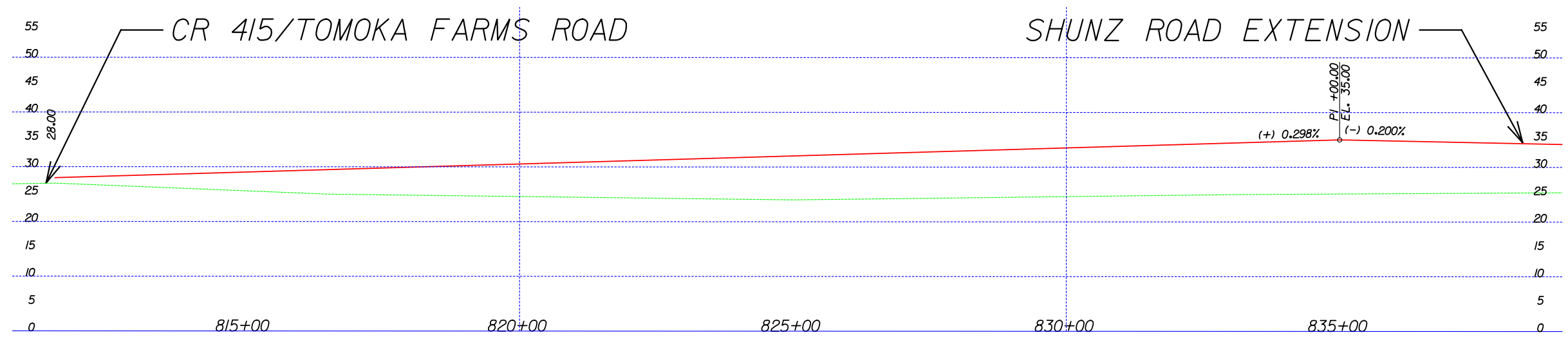
Protection Measures for the Eastern Indigo Snake



Environmental Assessment
LPGA BLVD EXTENSION PD&E STUDY



REVISIONS						John R. Freeman, JR., P.E., PTOE P.E. License No. 25730 Kittelson & Associates, Inc. 315 E. Robinson St., Suite 465 Orlando, Florida 32801 Certificate of Authorization No 00007524	STATE OF FLORIDA DEPARTMENT OF TRANSPORTATION		LPGA BLVD. PD&E STUDY US92 STA 969+00 TO 993+00		SHEET NO. 12 of 12
DATE	BY	DESCRIPTION	DATE	BY	DESCRIPTION						
							ROAD NO.	COUNTY	FINANCIAL PROJECT ID		
								VOLUSIA	410252-1-22-01		



REVISIONS						John R. Freeman, JR., P.E., PTOE P.E. License No. 25730 Kittelson & Associates, Inc. 315 E. Robinson St., Suite 465 Orlando, Florida 32801 Certificate of Authorization No 00007524	STATE OF FLORIDA DEPARTMENT OF TRANSPORTATION			LPGA BLVD. PD&E STUDY VERTICAL PROFILE B3 STA 811+07.18 TO 866+27.18	SHEET NO.
DATE	BY	DESCRIPTION	DATE	BY	DESCRIPTION						
							ROAD NO.	COUNTY	FINANCIAL PROJECT ID		1 of 3