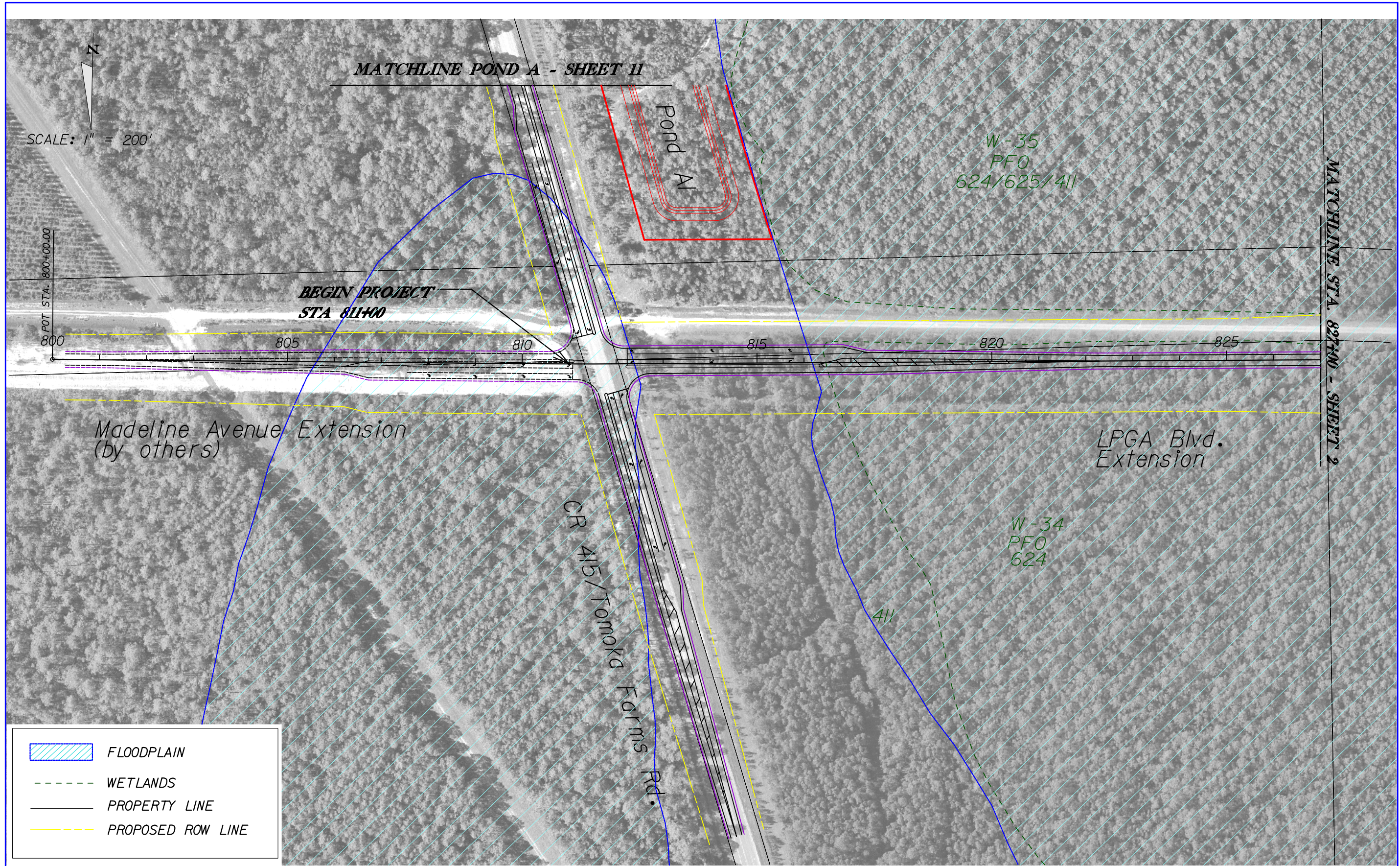






Appendix *G*

Preliminary Concept Plans and Profiles



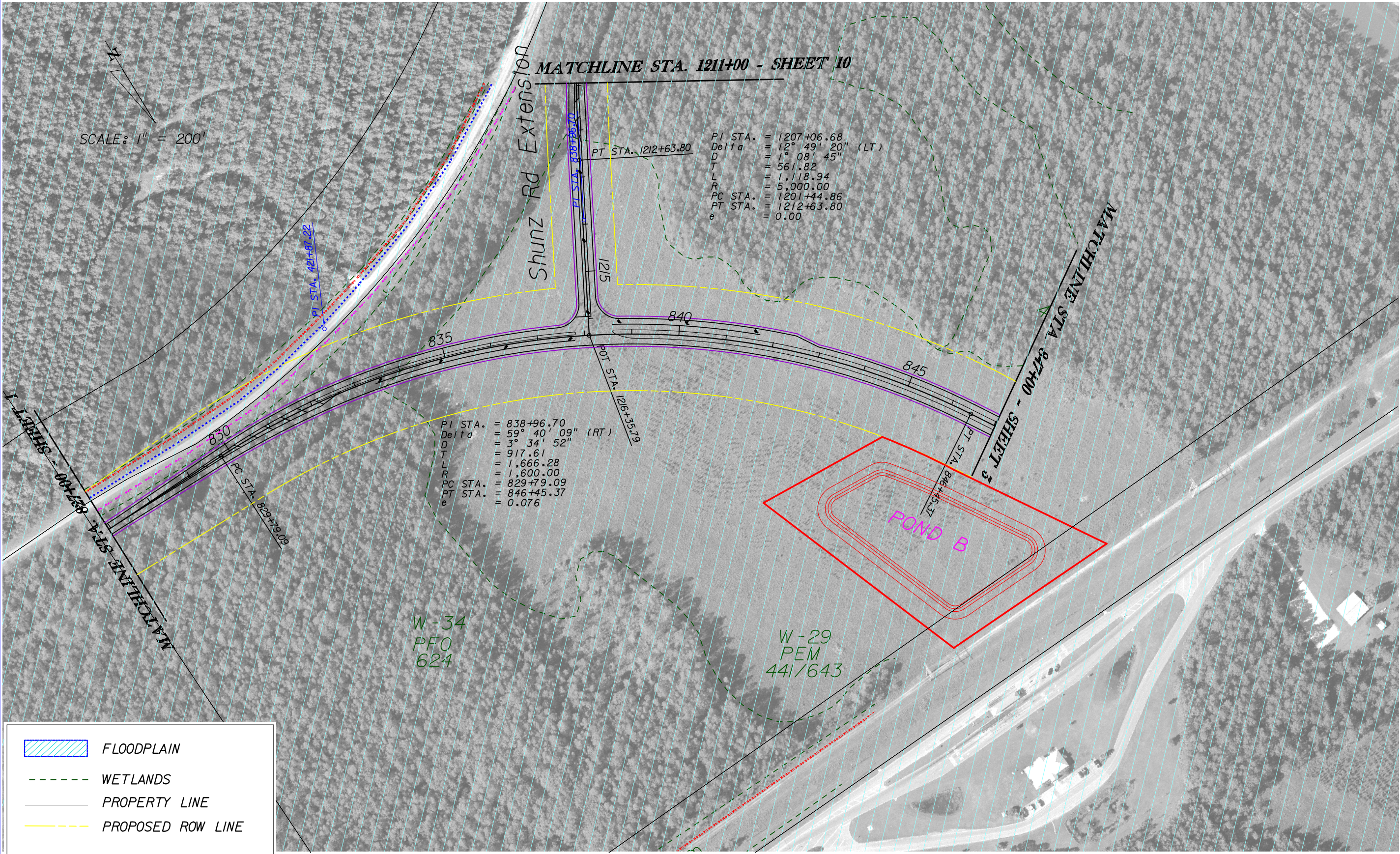
Environmental Assessment
LPGA BLVD EXTENSION PD&E STUDY



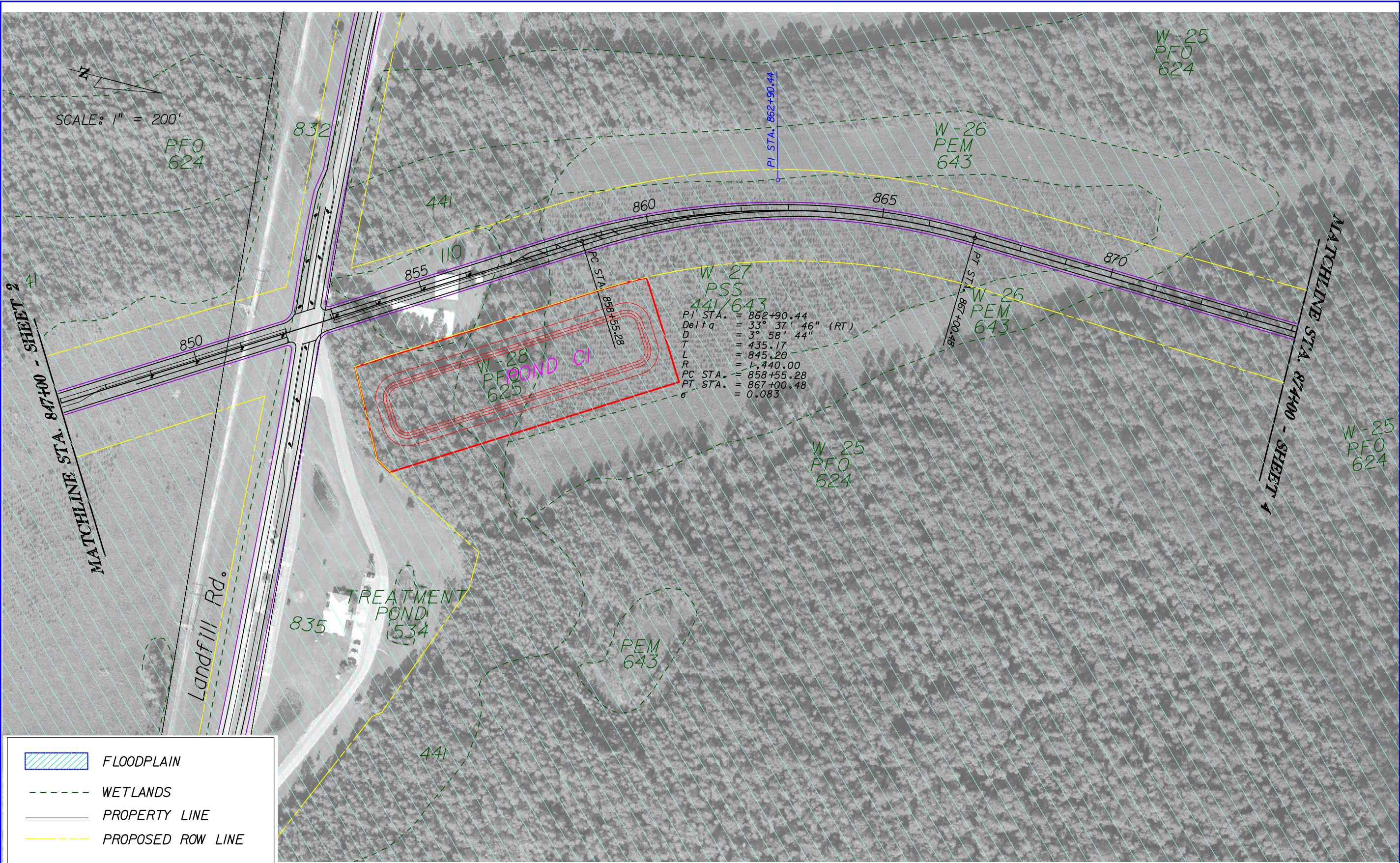
	FLOODPLAIN
	WETLANDS
	PROPERTY LINE
	PROPOSED ROW LINE

REVISIONS						STATE OF FLORIDA DEPARTMENT OF TRANSPORTATION	LPGA BLVD. PD&E STUDY ALIGNMENT B3 STA 800+00 TO 827+00	SHEET NO. 1 of 12
DATE	BY	DESCRIPTION	DATE	BY	DESCRIPTION			
						ROAD NO.	COUNTY	FINANCIAL PROJECT ID
							VOLUSIA	410252-1-22-01

John R. Freeman, JR., P.E., PTOE
P.E. License No. 25730
Kittelson & Associates, Inc.
315 E. Robinson St., Suite 465
Orlando, Florida 32801
Certificate of Authorization No 00007524



REVISIONS						John R. Freeman, JR., P.E., PTOE P.E. License No. 25730 Kittelson & Associates, Inc. 315 E. Robinson St., Suite 465 Orlando, Florida 32801 Certificate of Authorization No 00007524	STATE OF FLORIDA DEPARTMENT OF TRANSPORTATION			LPGA BLVD. PD&E STUDY ALIGNMENT B3 STA 827+00 TO 847+00	SHEET NO. 2 of 12
DATE	BY	DESCRIPTION	DATE	BY	DESCRIPTION		ROAD NO.	COUNTY	FINANCIAL PROJECT ID		
								VOLUSIA	410252-1-22-01		



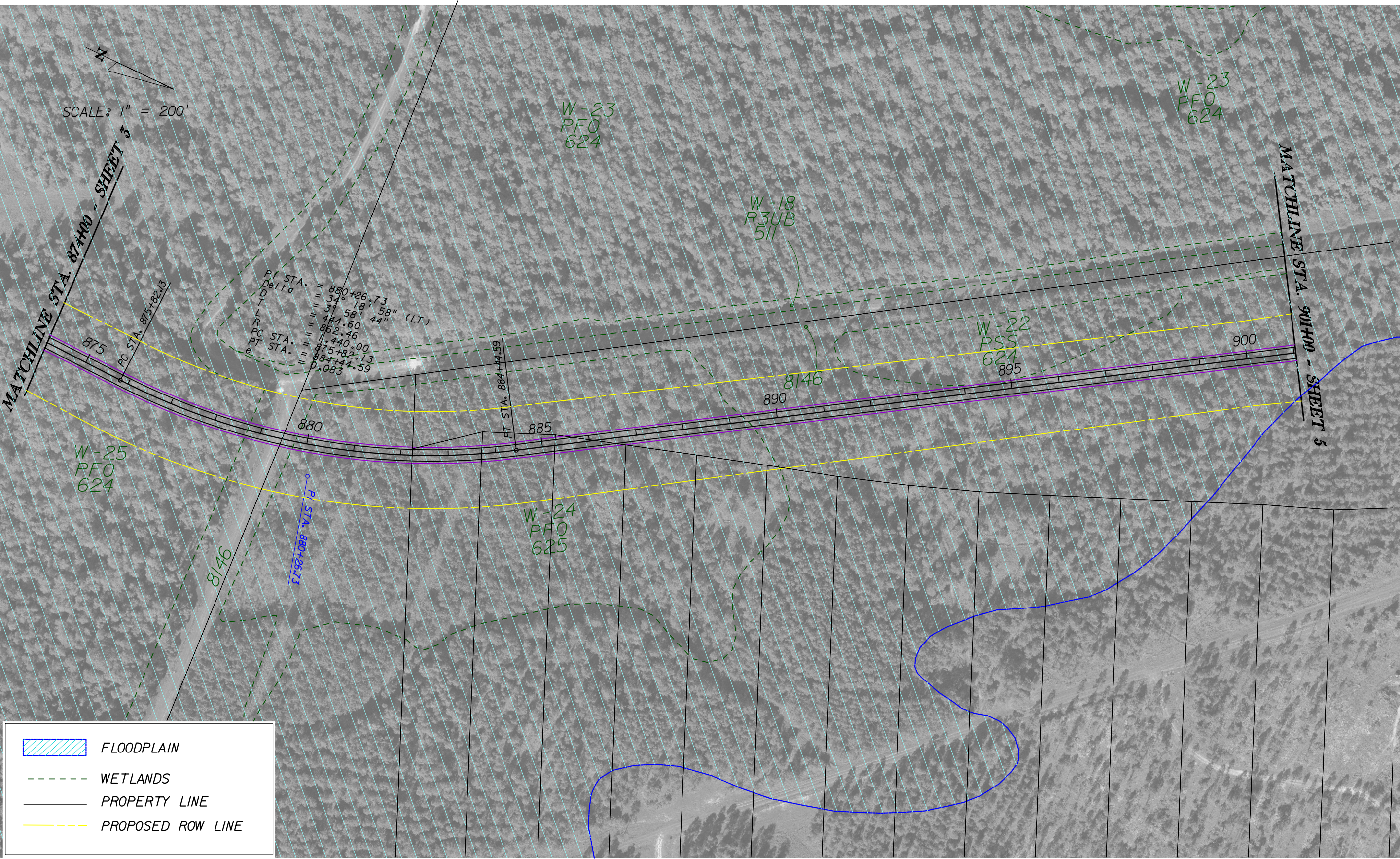
FLOODPLAIN

WETLANDS

PROPERTY LINE

PROPOSED ROW LINE

REVISIONS						STATE OF FLORIDA DEPARTMENT OF TRANSPORTATION	LPGA BLVD. PD&E STUDY ALIGNMENT B3 STA 847+00 TO 874+00		SHEET NO. 3 of 12
DATE	BY	DESCRIPTION	DATE	BY	DESCRIPTION				
						ROAD NO.	COUNTY	FINANCIAL PROJECT ID	
					John R. Freeman, JR., P.E., PTOE P.E. License No. 25730 Kittelson & Associates, Inc. 315 E. Robinson St., Suite 465 Orlando, Florida 32801 Certificate of Authorization No 00007524		VOLUSIA	410252-1-22-01	



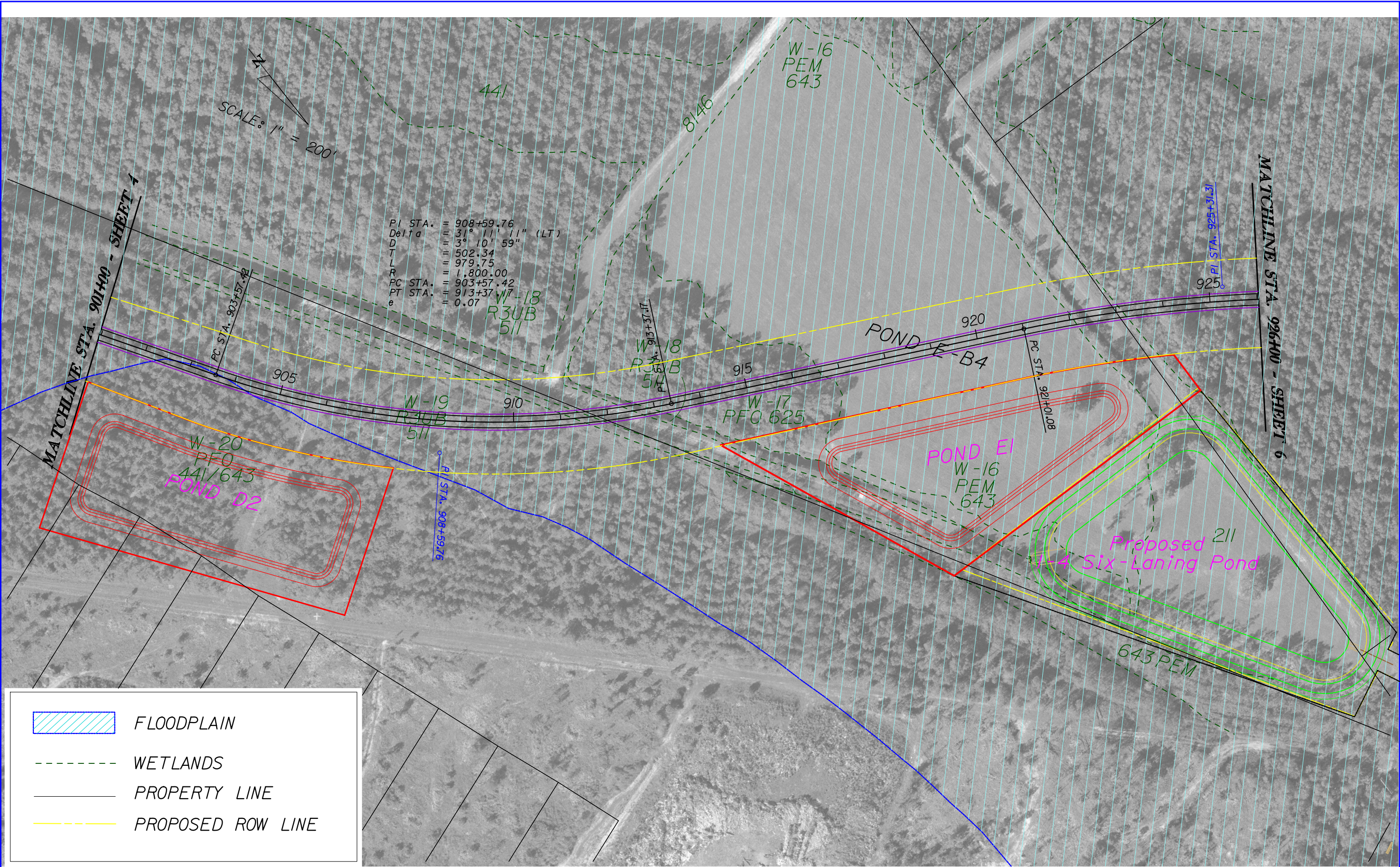
FLOODPLAIN

WETLANDS

PROPERTY LINE

PROPOSED ROW LINE

REVISIONS						STATE OF FLORIDA DEPARTMENT OF TRANSPORTATION	LPGA BLVD. PD&E STUDY ALIGNMENT B3 STA 874+00 TO 901+00		SHEET NO. 4 of 12
DATE	BY	DESCRIPTION	DATE	BY	DESCRIPTION				
						ROAD NO.	COUNTY	FINANCIAL PROJECT ID	
					John R. Freeman, JR., P.E., PTOE P.E. License No. 25730 Kittelson & Associates, Inc. 315 E. Robinson St., Suite 465 Orlando, Florida 32801 Certificate of Authorization No 00007524		VOLUSIA	410252-1-22-01	



FLOODPLAIN

WETLANDS

PROPERTY LINE

PROPOSED ROW LINE

REVISIONS						John R. Freeman, JR., P.E., PTOE P.E. License No. 25730 Kittelson & Associates, Inc. 315 E. Robinson St., Suite 465 Orlando, Florida 32801 Certificate of Authorization No 00007524	STATE OF FLORIDA DEPARTMENT OF TRANSPORTATION		LPGA BLVD. PD&E STUDY ALIGNMENT B3 STA 901+00 TO 926+00		SHEET NO. 5 of 12
DATE	BY	DESCRIPTION	DATE	BY	DESCRIPTION						