

W. FRENCH SHARED-USE PATH

August 10, 2021



Limits

Connects Valentine Park to Spring-to-Spring Trail located at Blue Spring State Park entrance

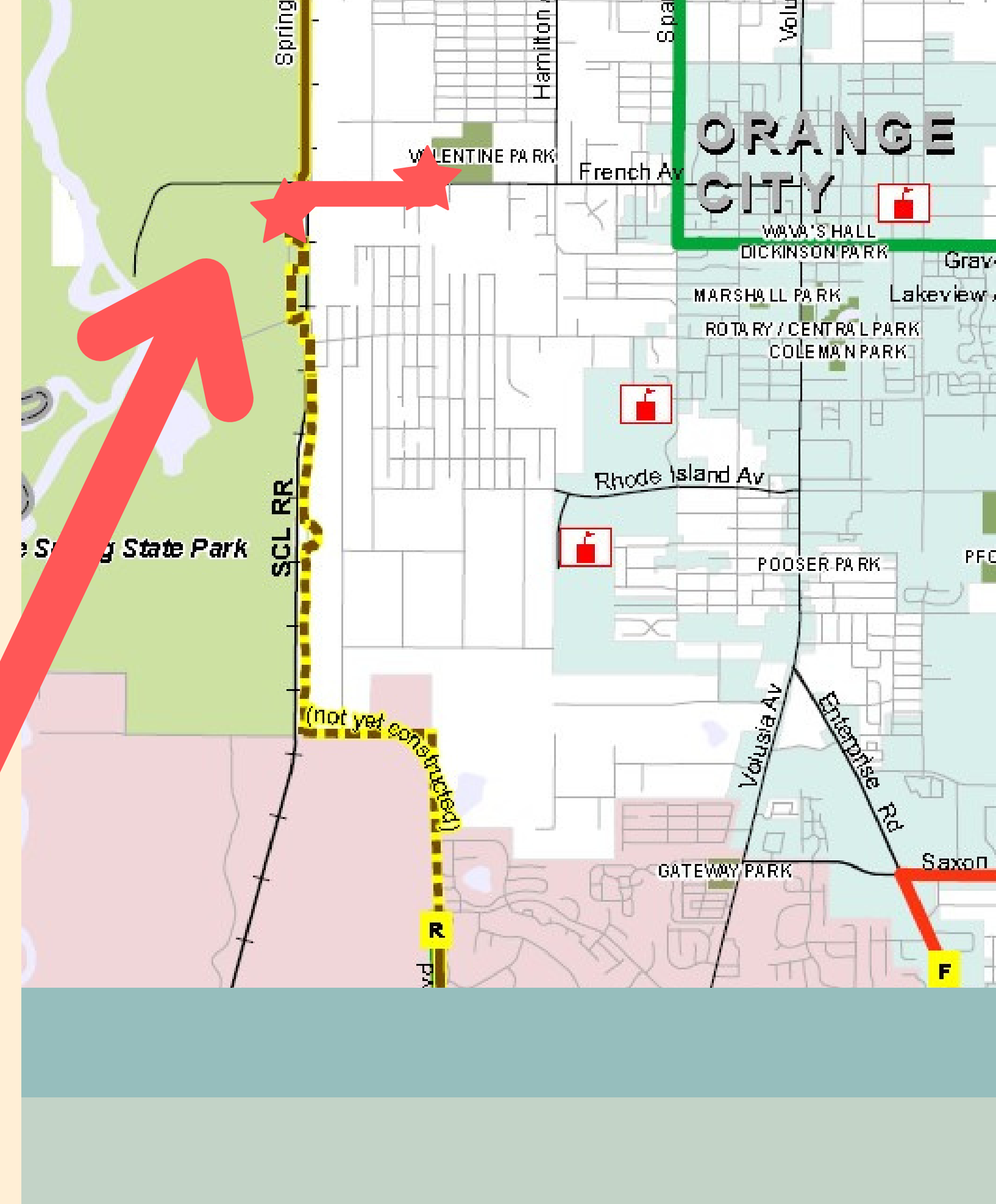
Length

0.68 miles including standalone pedestrian bridge over the FDOT/CSX tracks

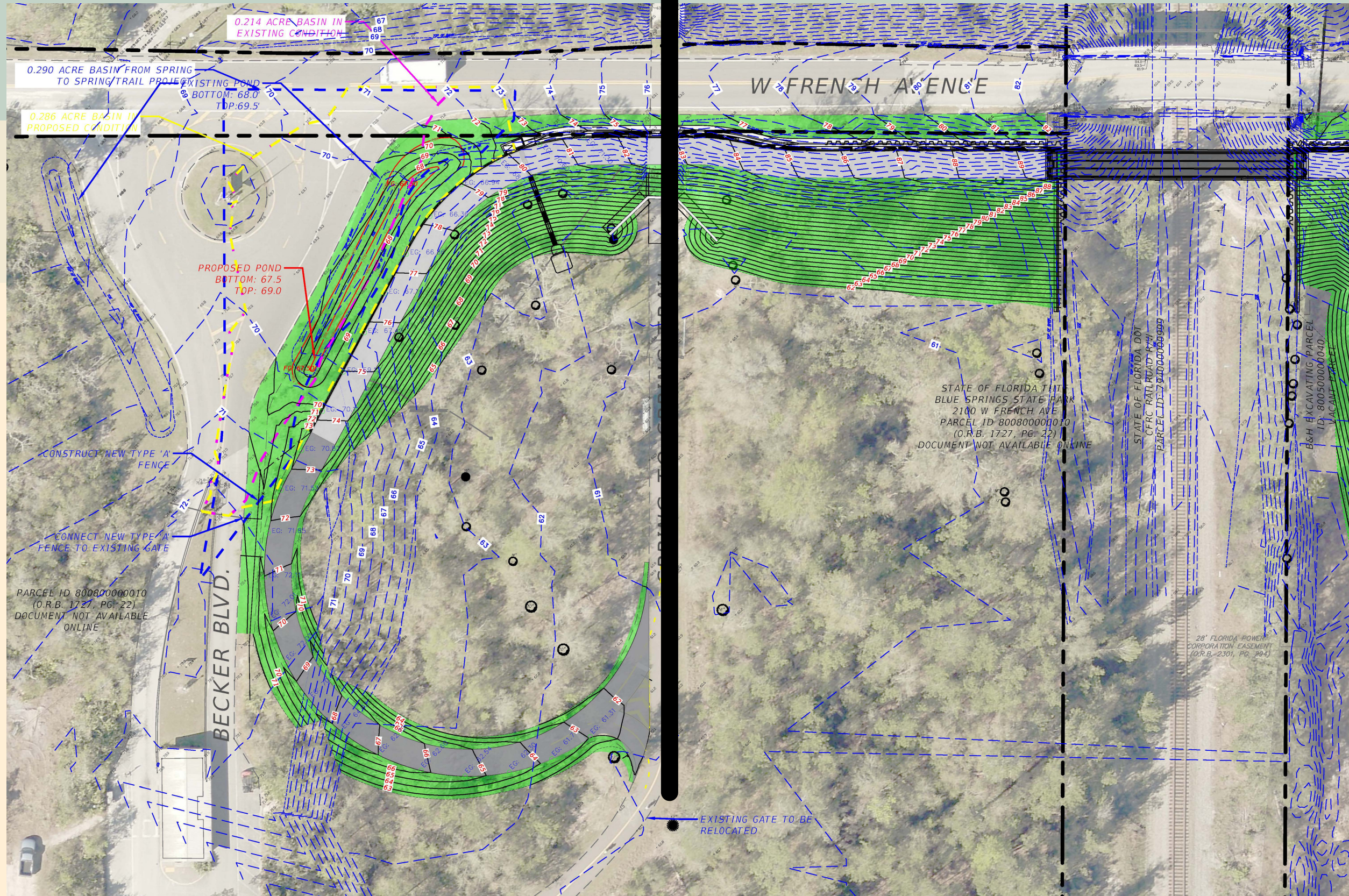
Design

\$503,000 design award to TEDS in 2017, 90% complete in February 2020, and applied for construction funding in June 2020

**W. FRENCH AVE.
12-FT WIDE TRAIL**



Spring-to-Spring Trail



**BLUE
SPRING
STATE
PARK**

FDEP LAND USE PERMIT

Denied on December 2020

- **Alternate Route #2**
North side of W. French Ave
- **Alternate Route #3**
Parallel trail south



UTILITY CLEARANCE

Unable to obtain

- **Vertical clearance requirements**

\$700,000 to relocate and upgrade 2 transmission poles

- **Maintenance road**

Improve dirt road, accommodate 150' truck turns, and fix existing slope



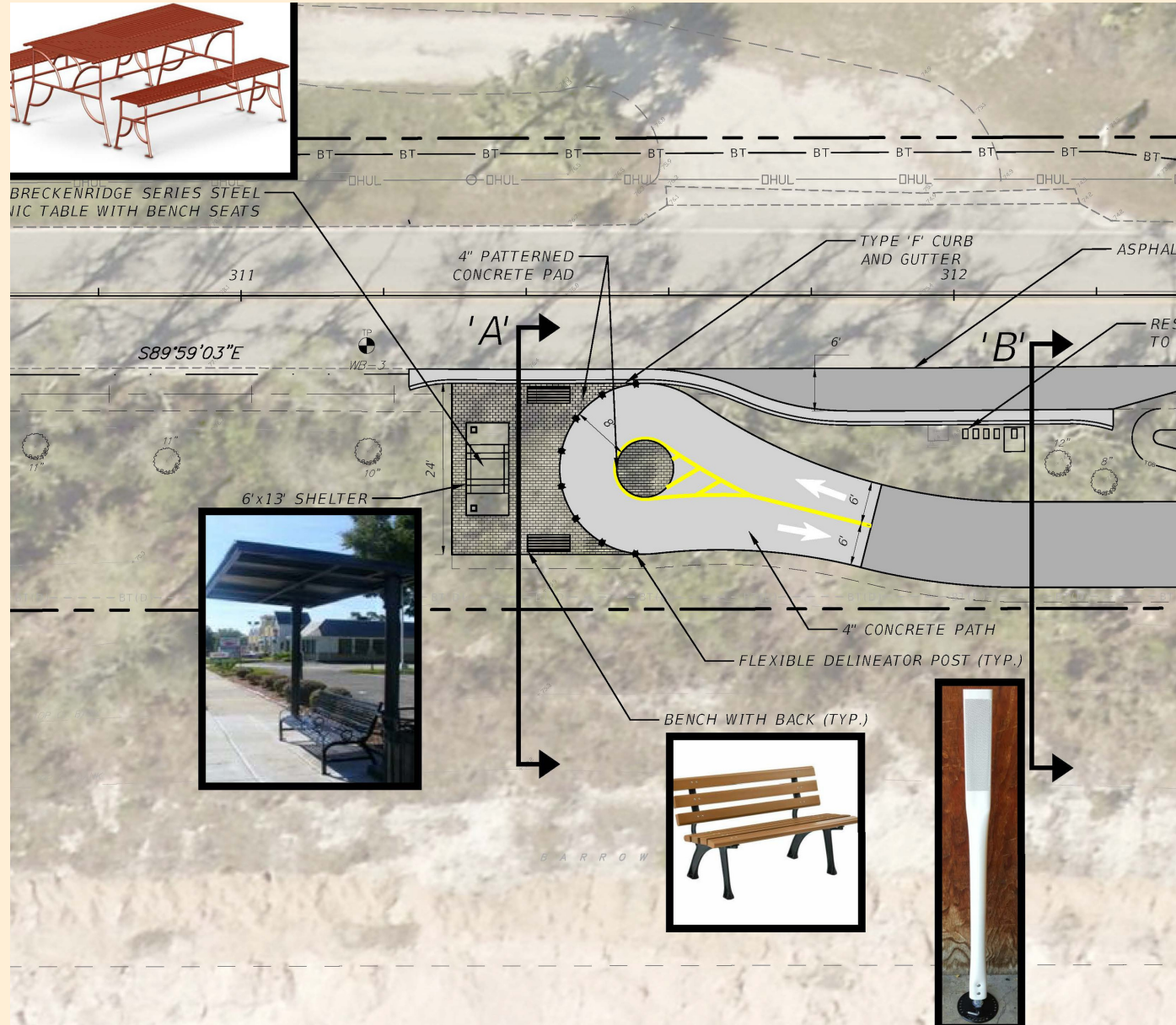


CITY COUNCIL ACTION

- February 23, 2021
- Close out existing LAP contract
- Segment trail to end at the RR tracks
- Fund re-design at City's sole cost because existing conditions are UNSAFE
- May 11, 2021
- \$119,000 re-design award to TEDS



**LOGICAL
TERMINUS**

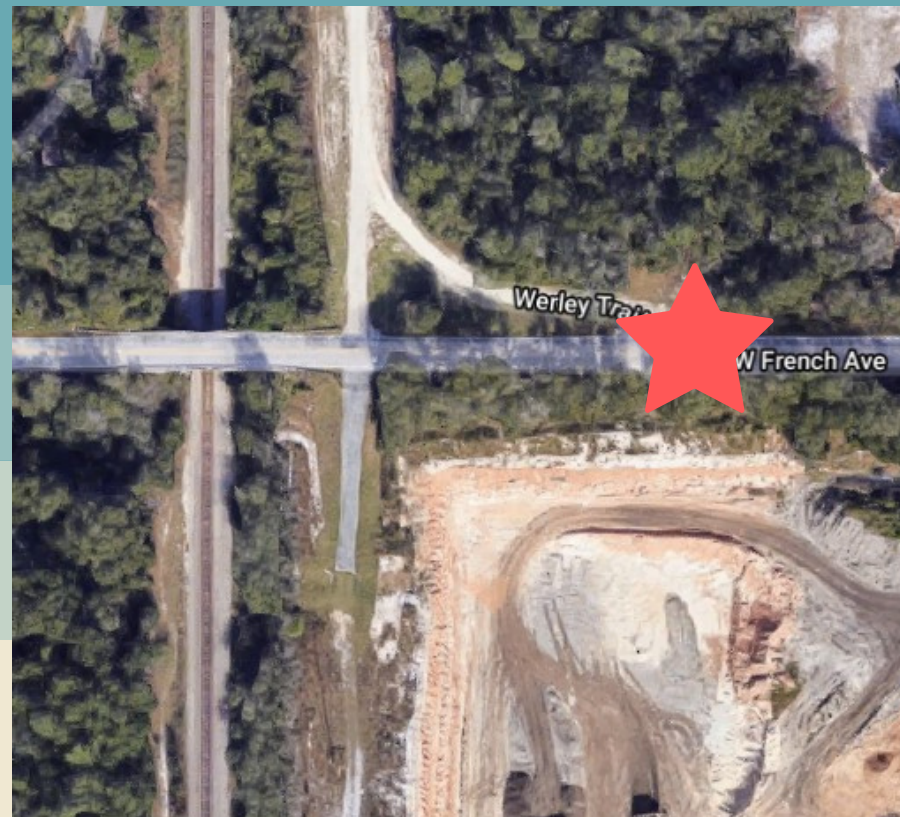


WERLEY TRAIL

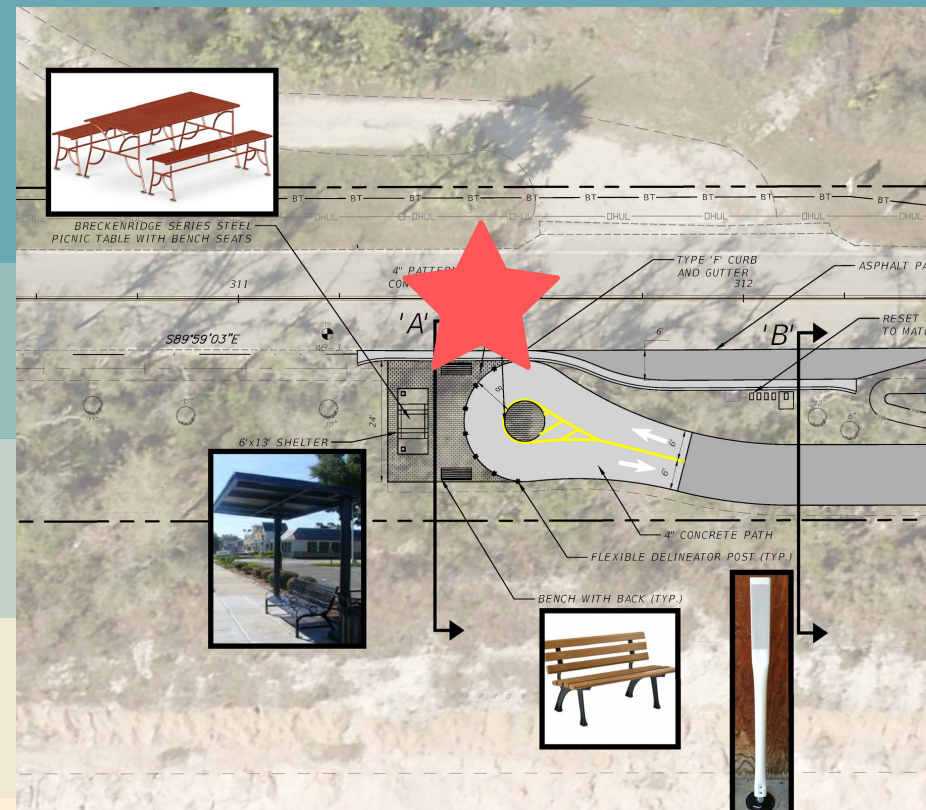


- East of the railroad tracks
- Existing dirt road connection on the north side serving local residents
- Existing mail box kiosk on south side with dirt pull off area

FDOT COMMENTS. JUNE 24, 2021.



How was the location selected?



What is the intention for bike/peds at this location?



What are the thoughts of the TPO?

NEXT STEPS



Re-submit to FDOT
for construction
funding, if TPO
accepts the
segmented design