



Welcome

S.R. A1A

Resiliency Plan

Flagler & Volusia Counties

Financial Project Identification (FPID) Nos.:

452443-1 and 452444-1

INTRODUCTION



Catalina Chacon
FDOT Strategic Initiatives Manager
719 S. Woodland Blvd., MS 552
DeLand, FL 32720
Catalina.Chacon@dot.state.fl.us
386-943-5039



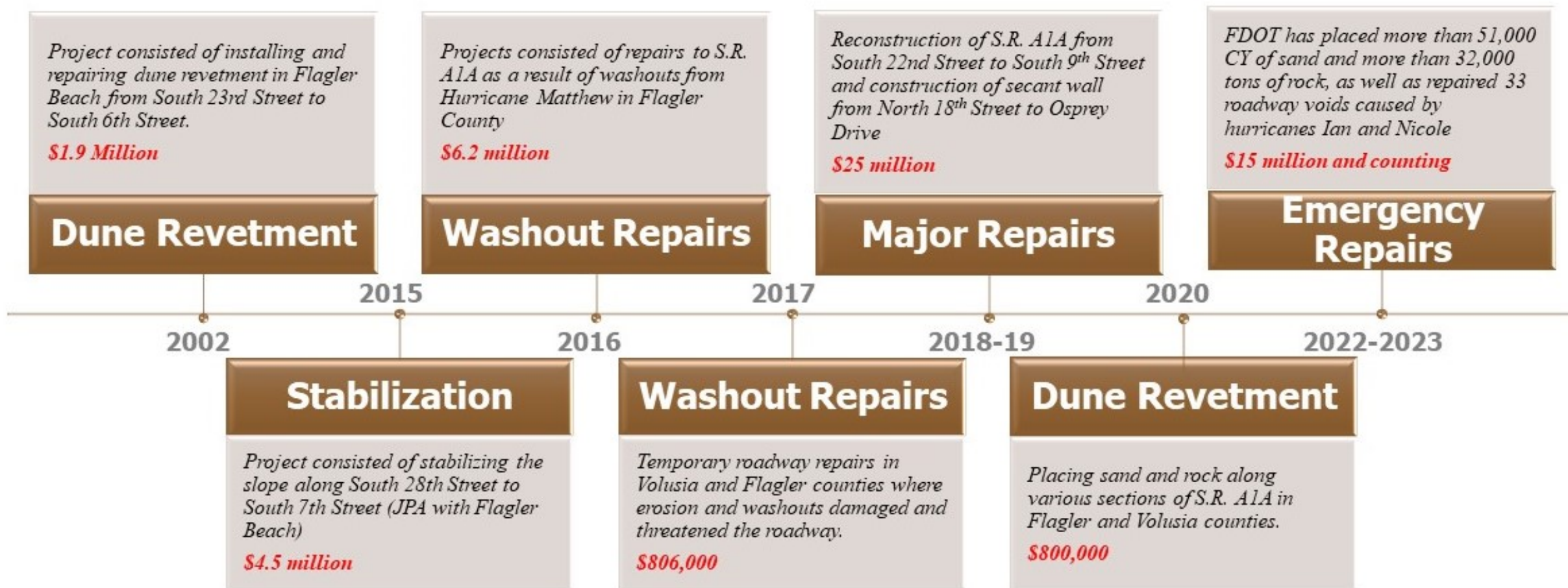
Ty Garner
FDOT Project Manager
719 S. Woodland Blvd., MS 542
DeLand, FL 32720
Ty.Garner@dot.state.fl.us
386-943-5299

How We Got Here

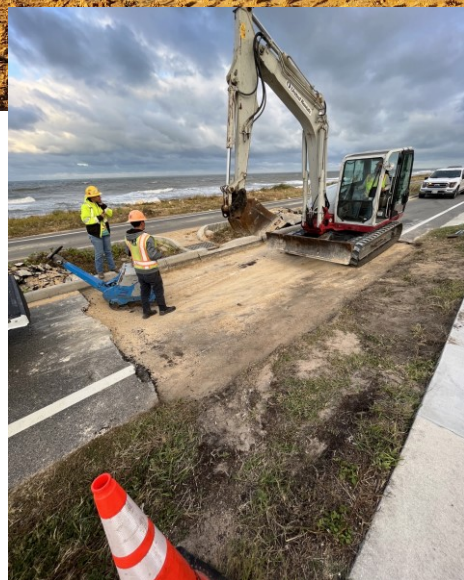
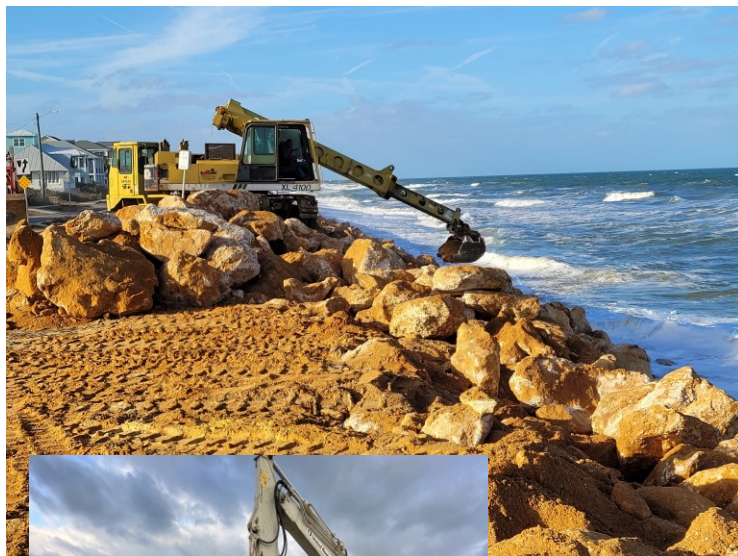


Nov 10, 2022 8:06:15 AM
29.42778273N 81.10289008W
3900 South Oceanshore Boulevard
Flagler Beach
Flagler County
Florida

How We Got Here



2022-2023 Repairs



So far, FDOT contractors have placed:

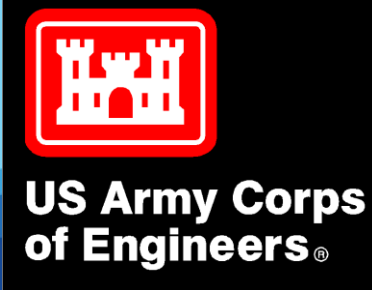
- 53,294 CY of sand
- 38,272 tons of rock
- Completed roadway repairs in several locations

Cost: \$15 million and rising

Resiliency Plan Strike Team



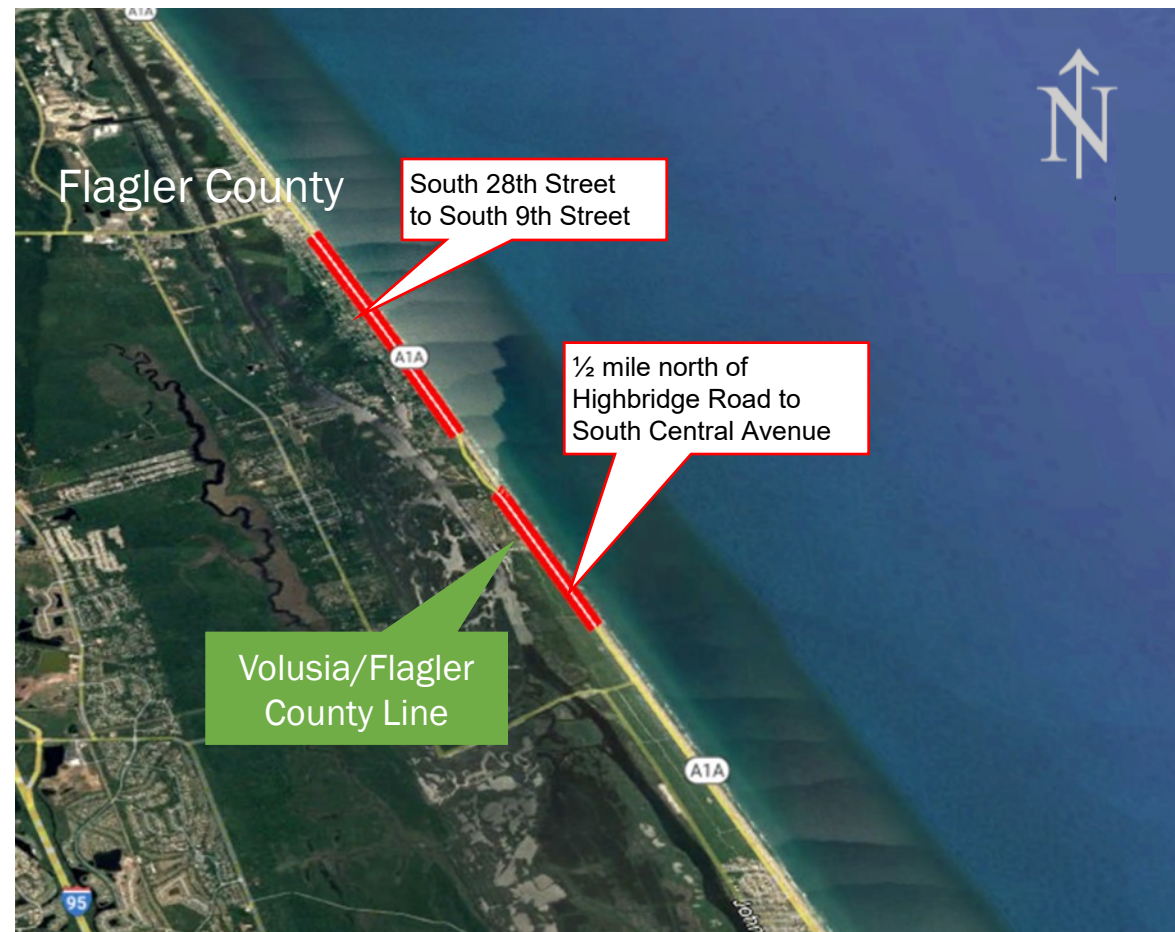
Partnering to Protect a Treasured Corridor



Resiliency Plan Focus Area



Step 1: Identify Critical Areas



Step 2: Identify Viable Options

Benefits:

- Wide beach acts as buffer
- Environmentally beneficial
- Enhances wildlife habitat and promotes vegetation
- Federal cost sharing possibilities

Disadvantages:

- Multiple events close together may compromise protection
- No backstop for protection
- Requires beach compatible sediment



Step 2: Identify Viable Options

Granite Revetment



Benefits:

- Provides shoreline protection if sized adequately
- Self-healing protection
- Highly durable

Disadvantages:

- High environmental impact
- Reduces effective beach width
- Impacts beach access
- Aesthetics
- Availability of suitable rock

Step 2: Identify Viable Options

Buried Secant Wall



Benefits:

- Provides backstop to erosion
- Relatively low environmental impact
- Good in areas with shallow rock layers
- Does not require anchor installation
- Corrosion-resistant materials
- Low maintenance cost

Disadvantages:

- Complex installation
- More expensive than other walls

Step 2: Identify Viable Options

Benefits:

- Provides backstop to erosion
- Relatively low environmental impact

Disadvantages:

- Prohibitive in areas with shallow rock layer
- Not suitable in areas with large elevation differences

Buried Sheet Pile Wall



Step 3: Listen to the Community



What the Team Heard:

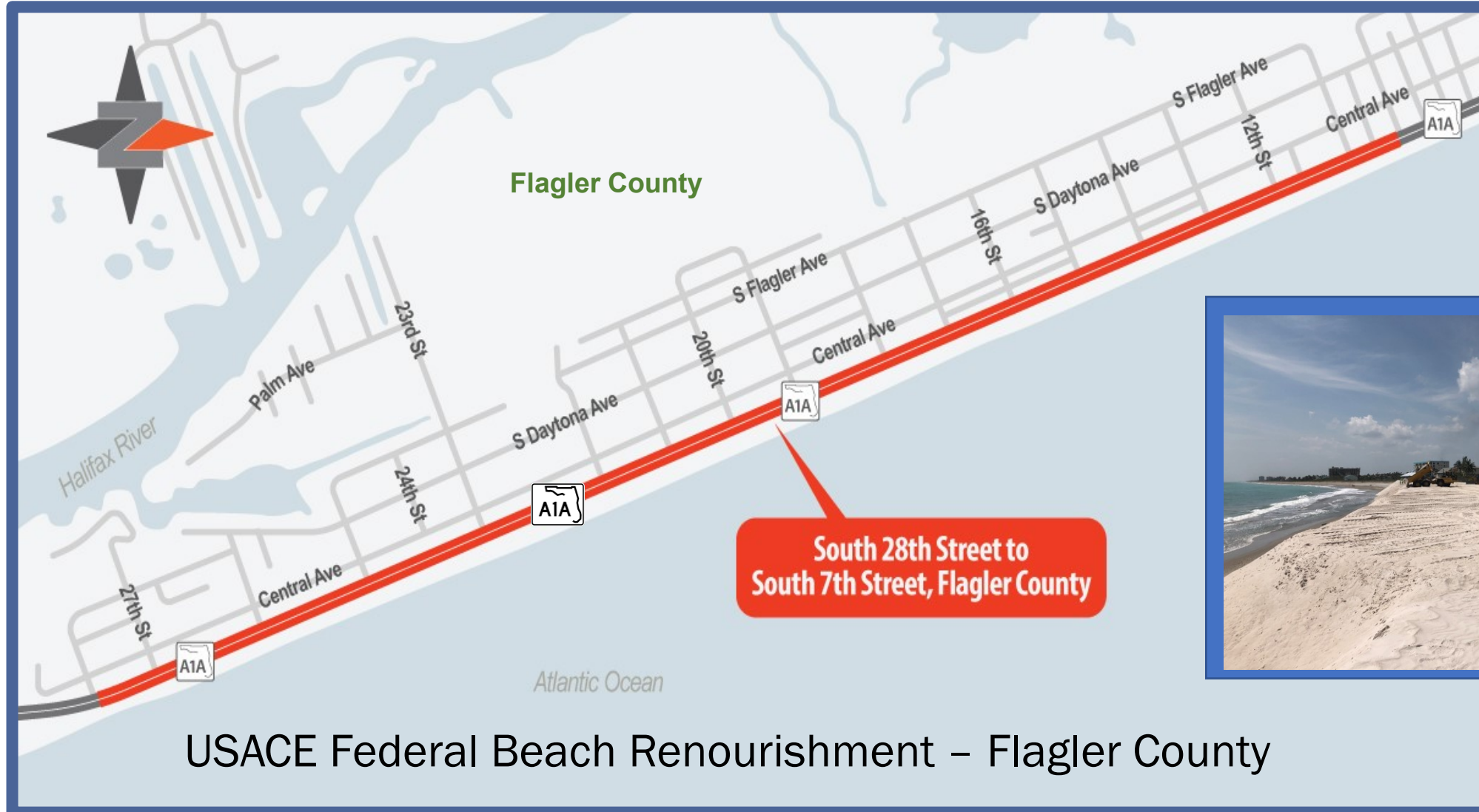
- Move forward with USACE project
- Find a permanent solution
- Maintain the natural beauty of the corridor
- Protect the beaches and tourism
- Include sand and vegetation on all options and make sure plants are large and hardy
- Provide more public walkovers, more pedestrian crossings and lower speeds

Step 4: Evaluate Options

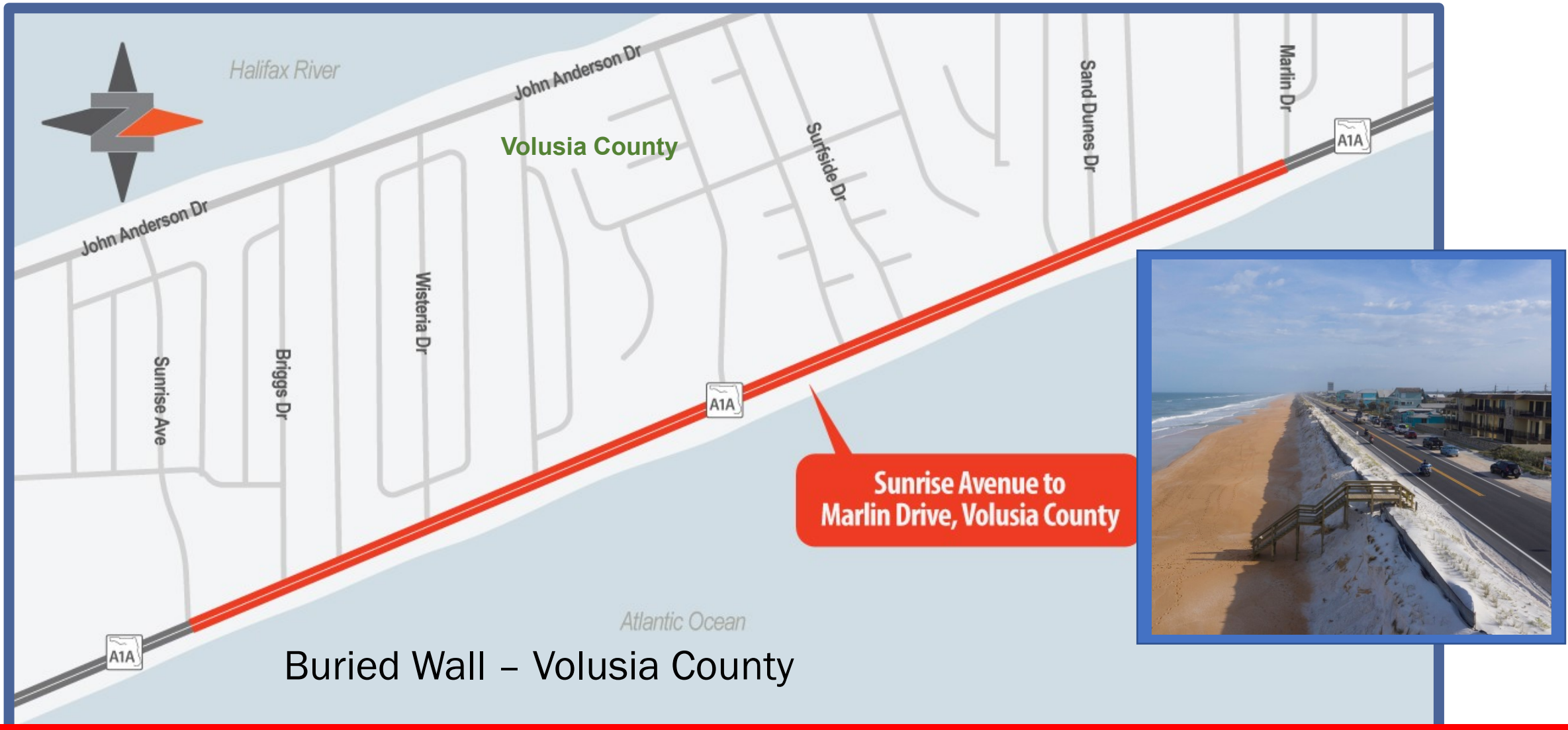


- 
- The background of the slide is a photograph of a coastal road. The road is paved and has a white line on the right side. To the left of the road are houses and palm trees. To the right of the road is a sandy area with some vegetation and the ocean in the distance.
- ✓ Roadway protection
 - ✓ Maintenance needs/cost
 - ✓ Environmental permitting
 - ✓ Aesthetics
 - ✓ Cost/Cost sharing possibilities
 - ✓ Wildlife and environmental impacts
 - ✓ Effect on recreation
 - ✓ Resiliency
 - ✓ Right of way needs
 - ✓ Effect on public access and parking
 - ✓ Water quality impact
 - ✓ Construction duration

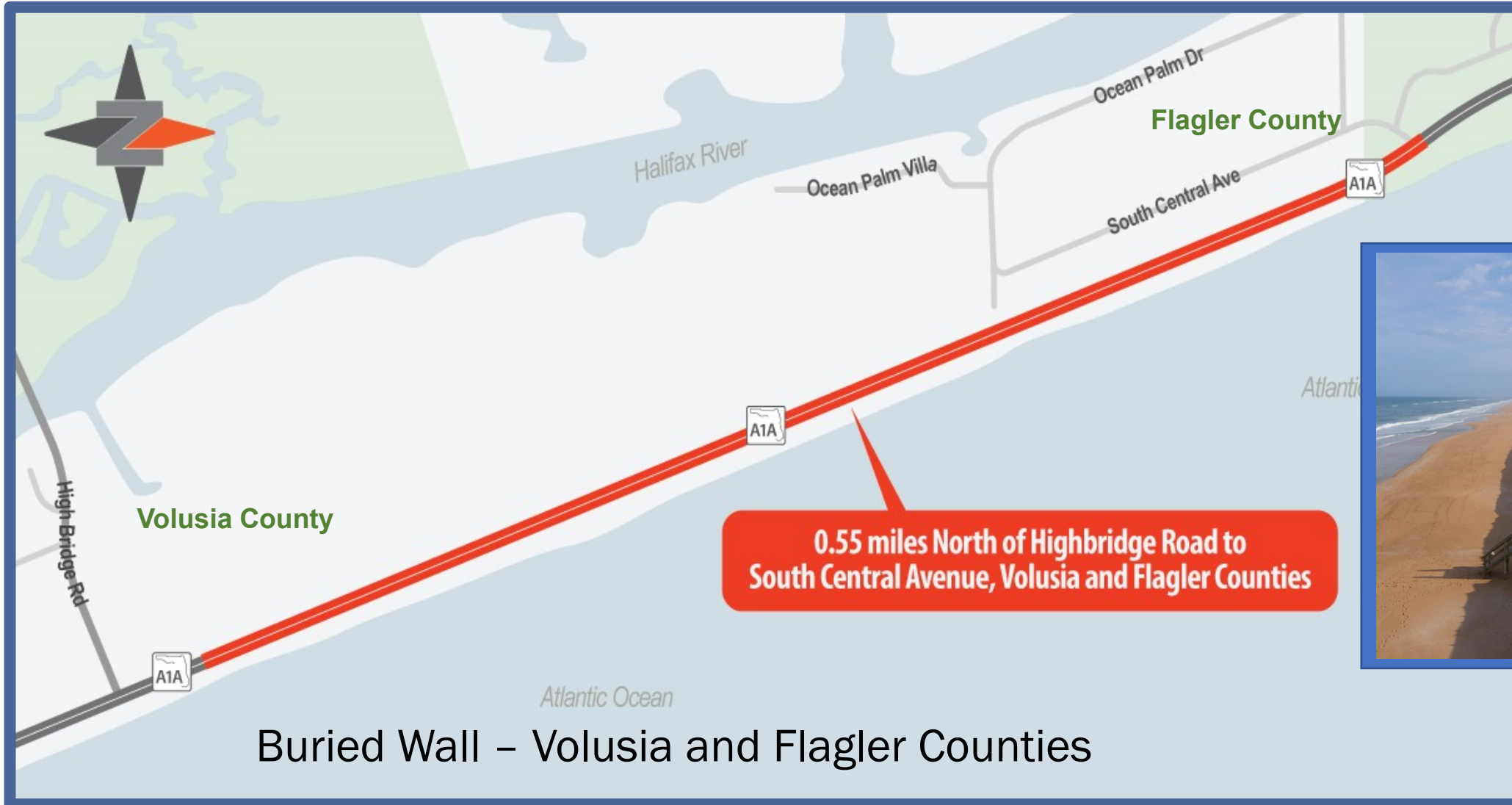
Recommendations



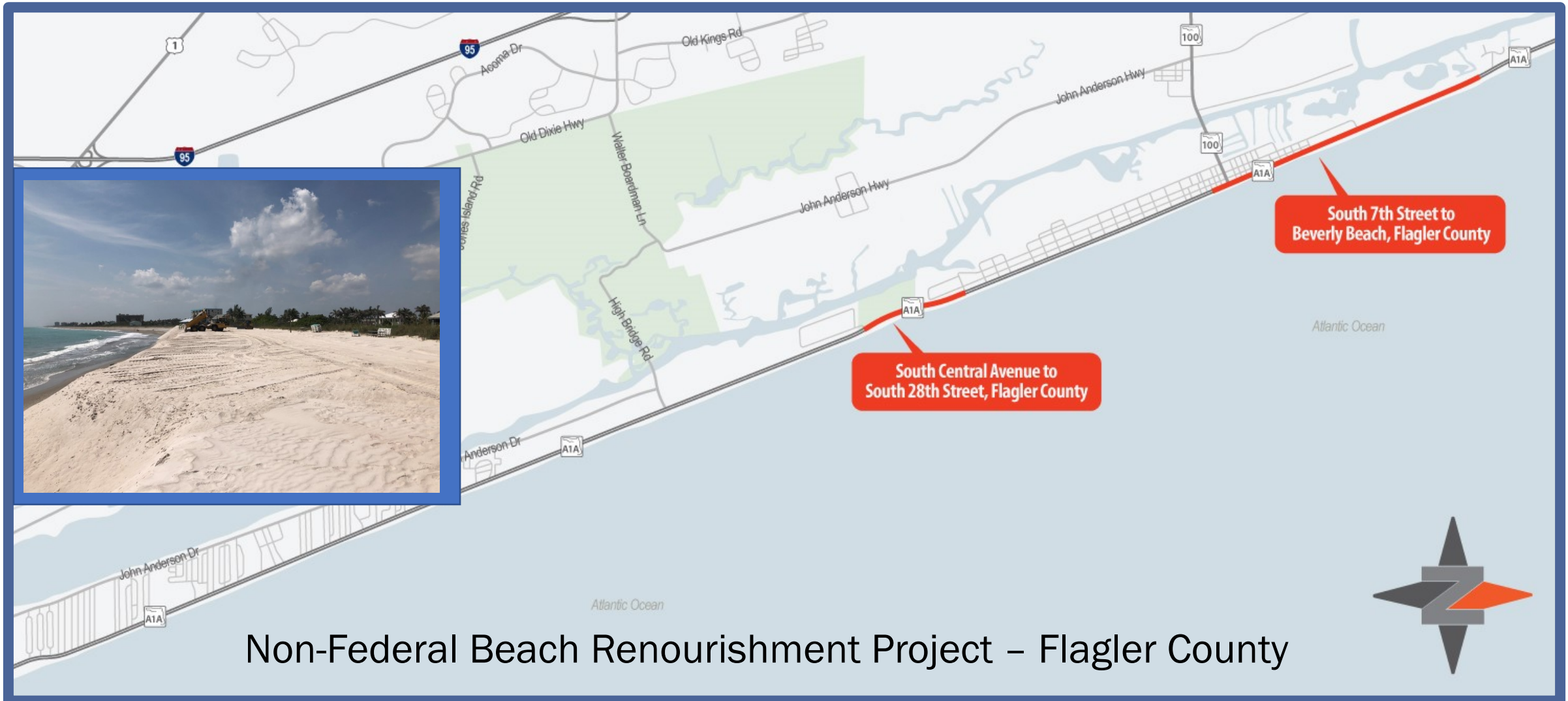
Recommendations



Recommendations



Recommendations



Non-Federal Beach Renourishment Project – Flagler County

Safety Recommendations



HOW TO USE AN RRFB

(Rectangular Rapid Flashing Beacon)

Pedestrians and Bicyclists

Press the button to activate the RRFB signals; the lights will begin to flash indicating to motorists a pedestrian is ready to cross.

Pedestrians

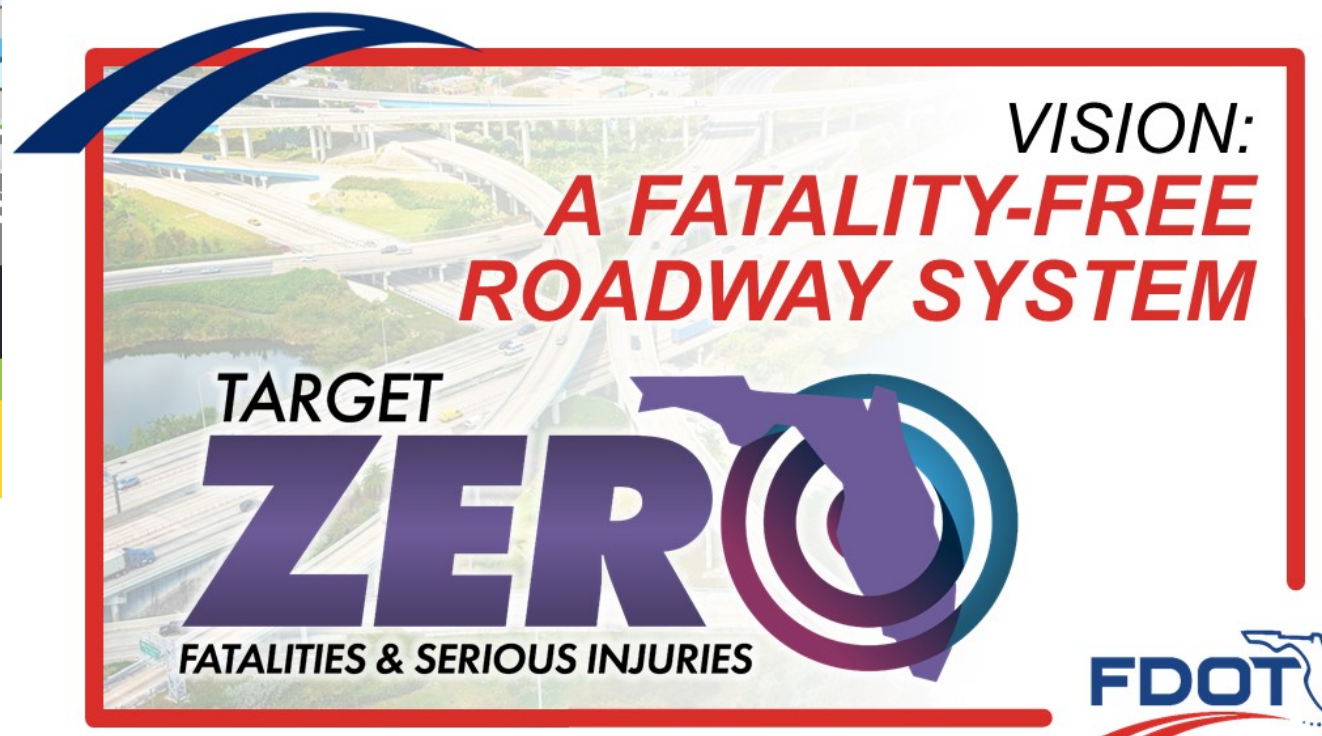
1. Make eye contact with motorists to be sure traffic is yielding before entering the crosswalk.
2. Walk defensively, scanning both directions to be sure motorists see you.
3. Always scan the road while crossing making sure all vehicles have stopped.

Bicyclists

1. Obey all traffic signs and signals.
2. When using the crosswalk, follow the pedestrian rules.
3. When using the travel lane, ride in the direction of traffic and always yield to pedestrians.

www.AlertTodayFlorida.com

Funded by the Florida Department of Transportation



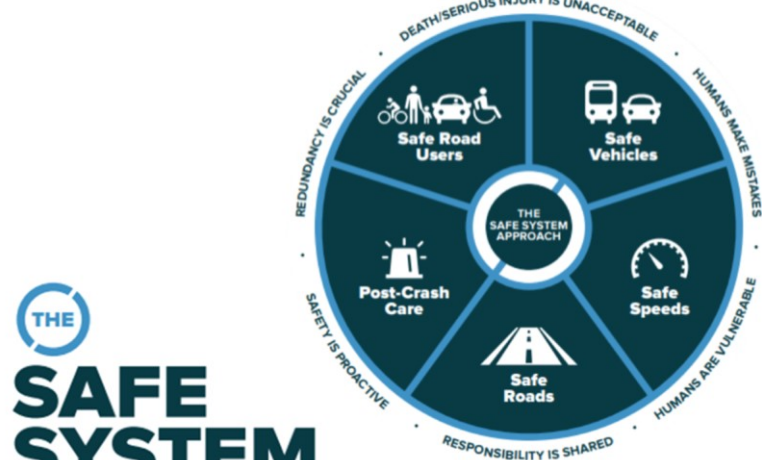
Concept Plan Development



Thank You for Participating



**SAFETY IS
EVERYONE'S
RESPONSIBILITY**



**THE
SAFE
SYSTEM**

APPROACH

Zero is our goal. A Safe System
is how we will get there.



Ty Garner
FDOT Project Manager
719 S. Woodland Blvd., MS 542
DeLand, FL 32720
386-943-5299
Ty.Garner@dot.state.fl.us