



## DISTRICT FIVE OFFICE OF SAFETY

### FDOT's Focus on Safety

Safety begins with ME

Safety begins with YOU

Loreen Bobo, P.E.  
FDOT D5 Safety Administrator  
Office of Safety

# Safety begins with ME...

## Safety begins with YOU!



### District 5 Office of Safety



**Established  
June 1, 2021**



**FDOT District 5**

**Office of Safety**

*Established June 1, 2021*

**We strive to**

- Eliminate fatalities and serious injuries to all users by reducing crashes on transportation systems in Central Florida and around the state; through

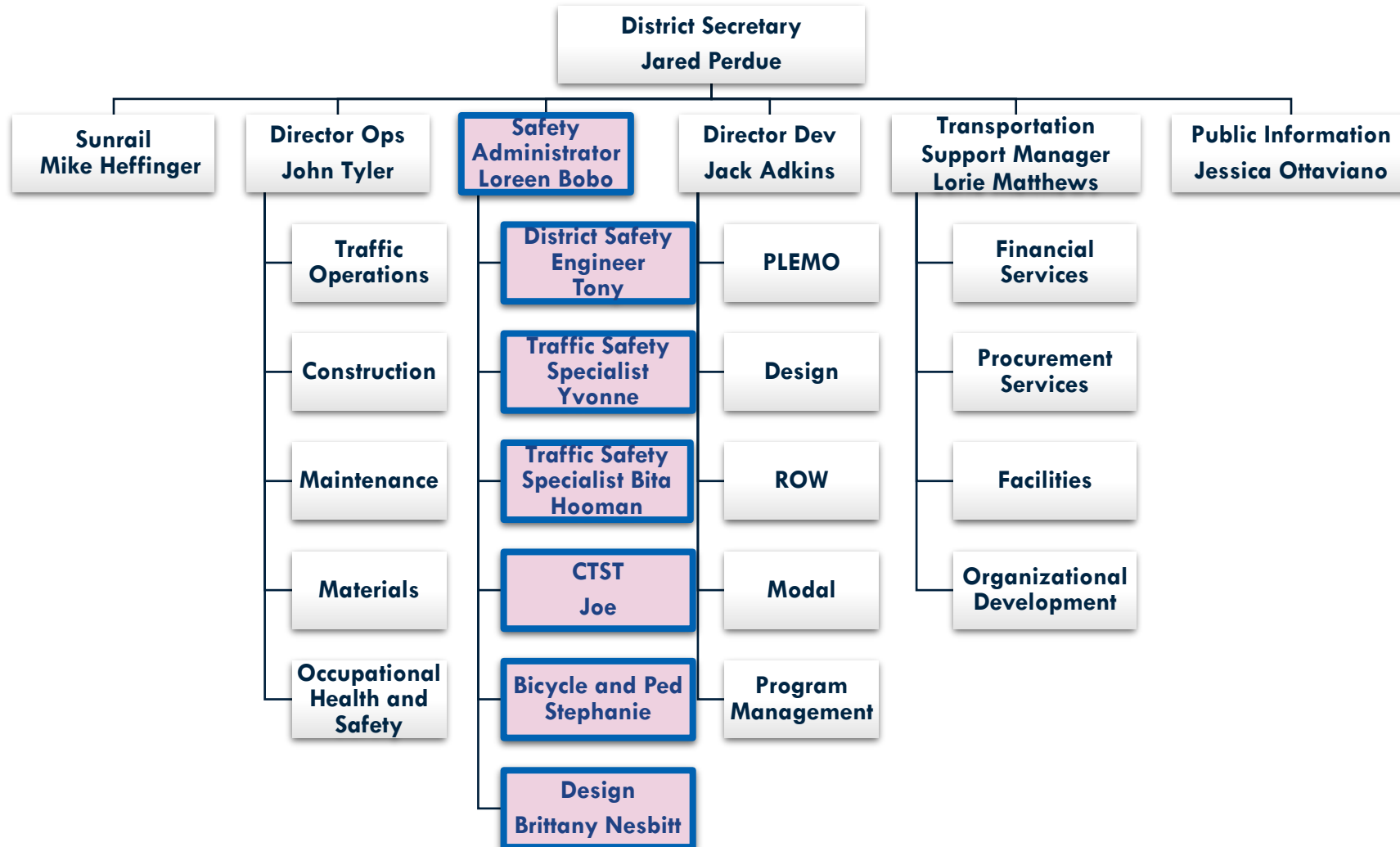
- Engineering
- Education
- Enforcement
- Collaborate extensively with internal and external partners, and our communities to meet our goals.
- Research, be innovative, be open to new ideas.
- Have every resident and visitor in Central Florida have a safe experience on transportation systems and go home safely.

**Safety begins with ME!**

*Green Bels*  
*Joe J. [Signature]*  
*Stephanie Moss*

*C.R. [Signature]*  
*Yvonne [Signature]*

# Where do we fit in?



# Why is Safety a focus?

Signal 4 Analytics Data <a href="https://signal4analytics.com">https://signal4analytics.com</a>	2022 (thru 1/10/22)	2021	2020	2019	2018
# Fatalities FL	19	3,581 ↑	3,334 ↑	3,189 ↑	3,136
# Fatalities D5	3	726 ↑	698 ↑	689 ↑	657
# Walker/Biker Fatalities FL	6	987 ↑	888 ↓	903 ↑	886
# Walker/Biker Fatalities D5	2	193 ↑	176 ↓	193 ↑	172

This data is being certified; final numbers may vary slightly.

## Volusia County 2021 Fatalities

**131 people lost their lives (137 in 2020)**

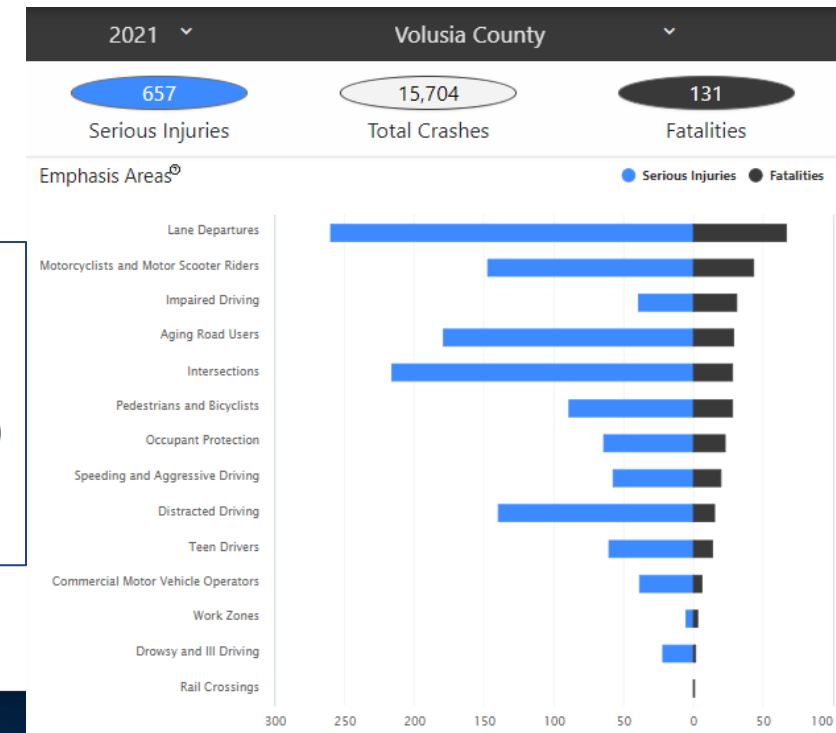
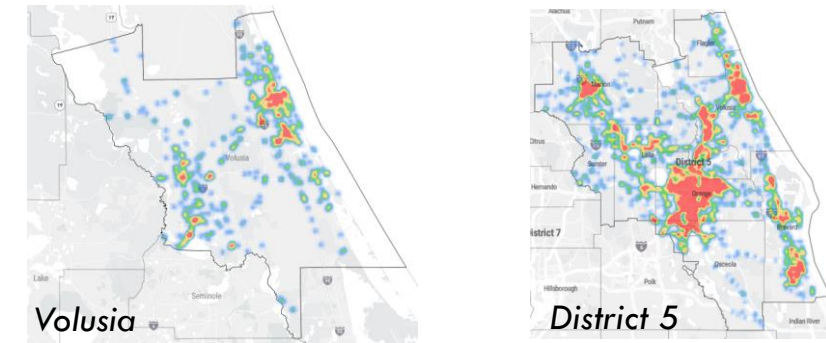
Improvement from year before, but still too many

**28 People walking and biking lost their lives (38 in 2020)**

## **Flagler County** (as a whole not just TPO areas)

**2021 – 14 fatalities (27 in 2020)**

**3 were people walking/biking**





## WHAT DO WE WANT TO ACHIEVE?

Provide a unified effort to greatly reduce  
crashes and affects of crashes to  
ultimately get to zero fatalities and  
serious injuries



# STRATEGIC PLAN - FOUNDATION

**Collaboration**

**Infrastructure**

**Education**



**FLORIDA**  
STRATEGIC HIGHWAY SAFETY PLAN



# COLLABORATION

- ▶ **Internal and External Partners**
- ▶ **Community-Centric**
- ▶ **Share our efforts, learn from others**
- ▶ **Aligning our various efforts is important**

## **INFRASTRUCTURE**

- ▶ **Every project is a safety project**
  - ▶ **Touch every project to empower and ensure max countermeasures are included.**
- ▶ **State Road or Local Road??? Does it really matter!**
- ▶ **Be proactive and Be bold on every project**
  - ▶ **If we want to save lives we have to be bold**
- ▶ **It may not be too late to incorporate the right elements into a project**
- ▶ **Target Speed – Lower speeds save lives**



# EDUCATION

- ▶ **All users – Be responsible and respectful.**
- ▶ **Safety Starts with ME! Safety Starts with YOU! – Make it personal**
- ▶ **Reach children, they will teach their parents**
- ▶ **Different ways to engage and share the safety messages**
- ▶ **Low Cost ways to change the safety culture externally**

# What can YOU do to make a difference?

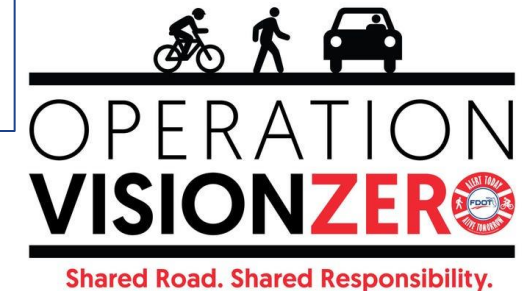


## Vision Zero

- Vision Zero sets the goal of eliminating all traffic fatalities and severe injuries, while increasing safe, healthy, equitable mobility for all.
  - In a set period with clear, measurable strategies.
- Traffic deaths are PREVENTABLE.
- Acknowledge HUMAN BEHAVIOR influences crashes
- Multidisciplinary approach
- Saving lives does not need to be expensive
- Who can adopt resolutions?
  - Counties, Cities, MPO's, Communities
- <https://visionzeronetwork.org/>
- **Towards Zero Deaths** - The strategy calls for all stakeholders to champion the idea that one death on our nation's roadways is too many, and we must all work together to bring the annual number of roadway deaths down to zero. <https://www.towardzerodeaths.org/>

## Target Zero

- Target Zero is a parallel effort that plans programs and projects, both infrastructure and behavioral related, to help achieve zero fatalities and serious injuries

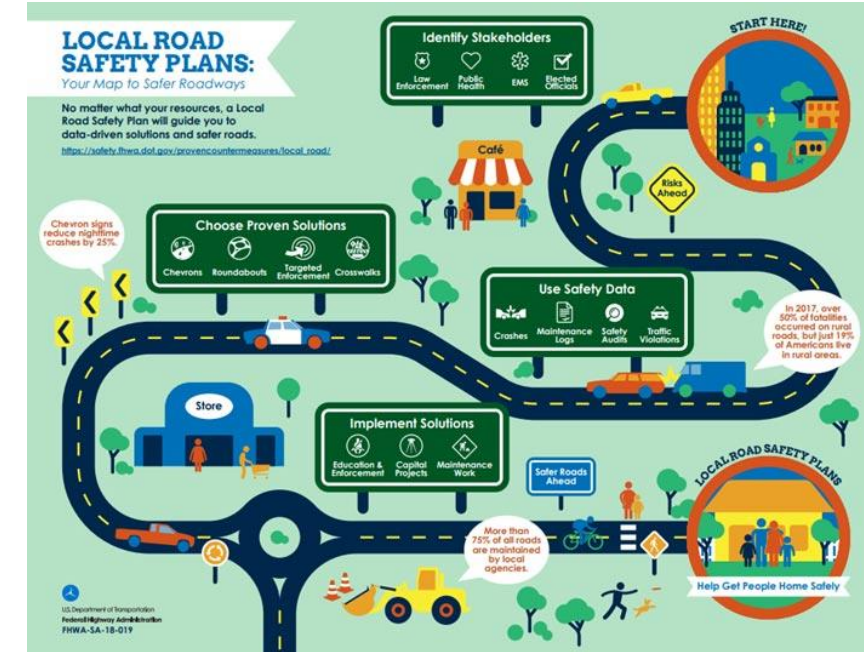


# What can YOU do to make a difference?



## Local Road Safety Plans (LRSP)

- While local roads are less traveled than State highways, they have a much higher rate of fatal and serious injury crashes.
- Provides a framework for identifying, analyzing, and prioritizing roadway safety improvements on local roads.
- Development process and content are tailored to local issues and needs.
- Prioritized list of issues, risks, actions, and improvements that can be used to reduce fatalities and serious injuries on local roads.
- Support the goals of a State's overall Strategic Highway Safety Plan (SHSP)
  - <https://www.fdot.gov/safety/shsp2016/>
- Do-It-Yourself Website created by FHWA
  - [https://safety.fhwa.dot.gov/provencountermeasures/local\\_roads.cfm](https://safety.fhwa.dot.gov/provencountermeasures/local_roads.cfm)





# What can YOU do to make a difference?

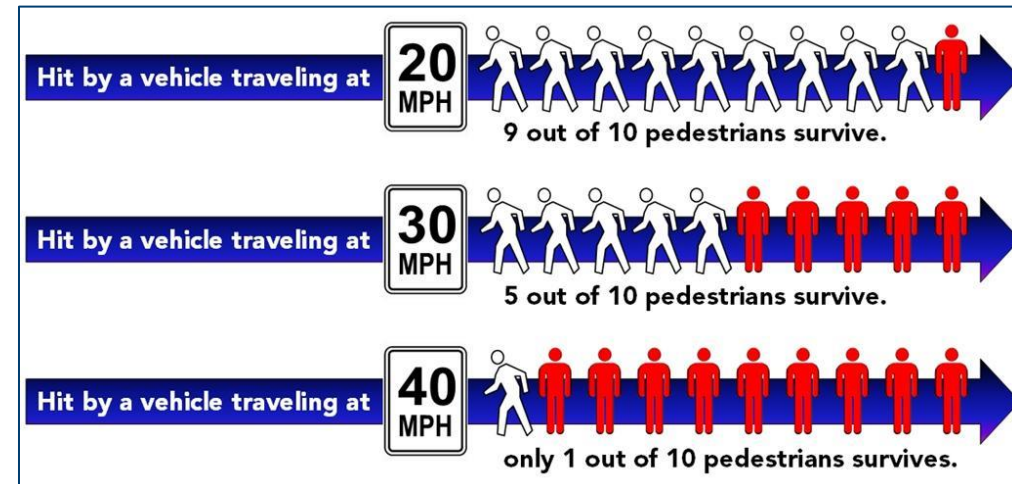
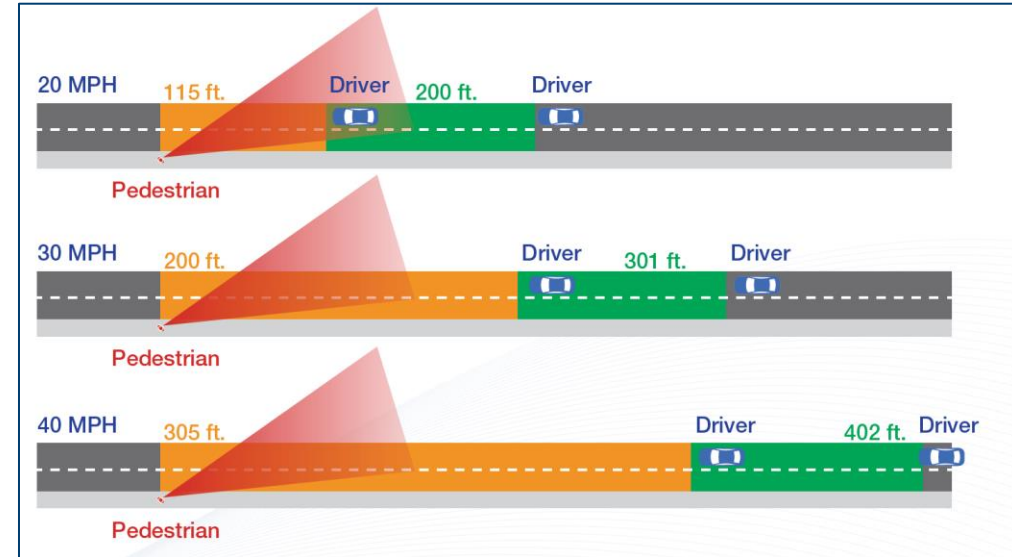


## Support Slower Speeds

- Target Speed
- Slower vehicles will save lives.
- Support geometry changes on our roadways that slow down traffic
  - Roundabouts
  - Chicanes
  - Raised Crosswalks
  - Narrower Lanes



<https://www.fdot.gov/safety/safetyengineering/countermeasures>  
<https://safety.fhwa.dot.gov/provencountermeasures/>



# What can YOU do to make a difference?



## Other Items

- Encourage safety enhancements in Developments and permits
- High Visibility Enforcement Opportunities
  - <https://www.alerttodayflorida.com/HVE>
- Other federal grant opportunities which support education and other efforts by locals.  
<https://www.fdot.gov/Safety/grants/grants-home.shtm>
- Safety starts with YOU, act responsibly. Respect other users.
- Educate and encourage your neighbors and friends to drive, walk, and bike safely, so that they make it home every day.





**Safety begins with YOU!**

**We want to hear from YOU!**

**Have a safety idea? Email us!  
D5-safetyideas@dot.state.fl.us**



# MOVE OVER

or slow down for emergency lights.

Florida law requires you to **MOVE OVER A LANE** for these vehicles that are stopped on the roadside helping motorists or providing services:

- Law Enforcement • Emergency Rescue •
- Ambulance • Fire Truck • Wrecker/Tow Truck •
- Garbage and Sanitation • Public Utility •
- Maintenance/Construction •

## REMEMBER

On highways with two or more lanes, move over a lane - when you can safely do so - for stopped emergency, sanitation, and utility vehicles, wreckers, and construction or maintenance vehicles that are displaying warning lights.

If you can't move over - slow to a speed that is 20 mph less than the posted speed limit.

Slow down to 5 mph when the posted speed limit is 20 mph or less.

<https://www.fdot.gov/Safety/campaigncalendar.shtm>



# Safety begins with ME...

# Safety begins with YOU!

*Thank you!*

Loreen Bobo, P.E.  
FDOT D5 Safety Administrator  
Office of Safety  
[Loreen.bobo@dot.state.fl.us](mailto:Loreen.bobo@dot.state.fl.us)