



# MEETING NOTICE & AGENDA

Please be advised that the River to Sea Transportation Planning Organization (R2CTPO) BICYCLE AND PEDESTRIAN ADVISORY COMMITTEE (BPAC) will be meeting on:

DATE: Wednesday, October 14, 2015

TIME: 3:00 PM

PLACE: River to Sea TPO  
2570 W. International Speedway Blvd.,  
Suite 100 (Conference Room)  
Daytona Beach, Florida 32114-8145

\*\*\*\*\*

Mr. Dustin Savage, Chairman

## AGENDA

- I. CALL TO ORDER/ROLL CALL/DETERMINATION OF QUORUM/PLEDGE OF ALLEGIANCE
- II. NEW BPAC MEMBER INTRODUCTION (*Enclosure, page 4*)
- III. PUBLIC COMMENT/PARTICIPATION (*Length of time at the discretion of the Chairman*)
- IV. ACTION ITEMS
  - A. REVIEW AND APPROVAL OF SEPTEMBER 9, 2015 BPAC MEETING MINUTES (*Contact: Marie Duda*) (*Enclosure, pages 5-12*)
  - B. REVIEW AND RECOMMEND APPROVAL OF RESOLUTION 2015-## AMENDING THE FY 2015/16 – 2019/20 TRANSPORTATION IMPROVEMENT PROGRAM (TIP) (*Contact: Robert Keeth*) (*Enclosure, pages 13-20*)
  - C. REVIEW AND RECOMMEND APPROVAL OF THE PROVIDENCE BOULEVARD SHARED USE PATH FEASIBILITY STUDY TASK ORDER (*Contact: Stephan Harris*) (*Enclosure, pages 21-22*)

IV. ACTION ITEMS *(continued)*

D. APPOINTMENT/REAPPOINTMENT OF BPAC PROJECT REVIEW AND TRANSPORTATION IMPROVEMENT PROGRAM (TIP) SUBCOMMITTEE MEMBERS  
*(Contact: Stephan Harris and Robert Keeth) (Enclosure, page 23)*

V. PRESENTATIONS AND DISCUSSION ITEMS

A. PRESENTATION ON THE SR/CR A1A PEDESTRIAN SAFETY & MOBILITY STUDY  
*(Contact: Stephan Harris) (Enclosure, pages 24-43)*

B. PRESENTATION ON THE US 92 (INTERNATIONAL SPEEDWAY BOULEVARD) CORRIDOR MASTER MANAGEMENT PLAN *(Contact: Stephan Harris)*  
*(Enclosure, pages 44-51)*

C. PRESENTATION ON THE WALKING REVOLUTION *(Contact: Stephan Harris)*  
*(Enclosure, page 52)*

VI. STAFF COMMENTS *(Enclosure, page 53)*

® International Walk to School Day

® US 17 Corridor Improvement Program Study, Phase 2

VII. INFORMATION ITEMS *(Enclosure, pages 53-56)*

® BPAC Attendance Record

® Share the Road Celebration of Cycling Flyer

® TPO Board Meeting Report

VIII. BPAC MEMBER COMMENTS *(Enclosure, page 53)*

IX. ADJOURNMENT *(Enclosure, page 53)*

**\*\*\*The next meeting of the BPAC will be on Wednesday, November 11, 2015\*\*\***

BPAC Notice and Agenda  
October 14, 2015  
Page 3

NOTE: Individuals covered by the Americans with Disabilities Act of 1990 in need of accommodations for this public meeting should contact the River to Sea TPO office, 2570 W. International Speedway Blvd., Suite 100, Daytona Beach, Florida 32114-8145; (386) 226-0422, extension 20416, at least five (5) working days prior to the meeting date.

NOTE: If any person decides to appeal a decision made by the board with respect to any matter considered at such meeting or hearing, he/she will need a record of the proceedings including all testimony and evidence upon which the appeal is to be based. To that end, such person will want to ensure that a verbatim record of the proceedings is made.

NOTE: The River to Sea TPO does not discriminate in any of its programs or services. To learn more about our commitment to nondiscrimination and diversity, visit our Title VI page at [www.R2CTPO.org](http://www.R2CTPO.org) or contact our Title VI/Nondiscrimination Coordinator, Pamela Blankenship, at 386-226-0422, extension 20416, or [pblankenship@r2ctpo.org](mailto:pblankenship@r2ctpo.org).

SUMMARY SHEET  
BPAC  
OCTOBER 14, 2015

II. New BPAC Member Introduction

**Background Information:**

On September 10, 2015, TPO Board and Volusia County Council Member Joshua Wagner appointed Nancy Burgess-Hall as the alternate BPAC representative for Volusia County, District 2.

On August 12, 2015, Volusia County Parks, Recreation & Culture appointed Mr. Aaron Van Kleeck as the alternate BPAC representative (non-voting) for Volusia County.

On September 3, 2015, the Flagler County Board of County Commissioners appointed Mr. Ben Hogarth as the BPAC technical representative (non-voting) for Flagler County.

*Action Requested:*

*As directed by the BPAC*

SUMMARY SHEET  
BPAC  
OCTOBER 14, 2015

IV. Action Items

A) Review and Approval of September 9, 2015 BPAC Meeting Minutes

**Background Information:**

Minutes are prepared for each meeting and must be approved by the BPAC. The September 9, 2015 BPAC meeting minutes are provided with this agenda packet for your review.

*Action Requested:*

*Motion to approve the September 9, 2015 BPAC meeting minutes*

**Bicycle/Pedestrian Advisory Committee (BPAC)  
Meeting Minutes  
September 9, 2015**

**Members Present:**

Holly Ryan  
John Schmitz  
Scott Leisen  
Paul Eik  
Dustin Savage, Chairman  
Nic Mostert  
Bob Storke, Vice Chairman  
Phyllis Campbell  
Colleen Nicoulin  
Jason Aufdenberg  
Alice Haldeman  
Bill Pouzar

**Members/Technical Appointees Absent:**

Jeff Hodge (excused)  
Ted Wendler  
Michelle Grenham (excused)  
Patricia Lipovsky  
Bob Owens

**Non-Voting Technical Appointees Present:**

Ben Hogarth  
Gwen Perney  
Melissa Winsett  
John Cotton  
Deborah Tyrone

**Others Present:**

Pamela Blankenship  
Marie Duda, Recording Secretary  
Stephan Harris  
Bob Keeth  
Jean Parlow  
Vince Wang  
Aarti Sharma  
Lois Bollenback  
Nancy Burgess-Hall  
Doug Hall  
Frank Andrews  
Martha Moore

**Representing:**

Daytona Beach  
Daytona Beach Shores  
Deltona  
Flagler Beach  
Flagler County  
Holly Hill  
Orange City  
Ponce Inlet  
Port Orange  
Volusia County, At Large  
Volusia County, District 3  
Volusia County, District 5

**Representing:**

DeBary  
DeLand  
Edgewater  
Volusia County, District 2  
Flagler County Transit

**Representing:**

Flagler County  
Port Orange  
Volusia County  
Votran  
FDOT

**Representing:**

TPO Staff  
TPO Staff  
TPO Staff  
TPO Staff  
TPO Staff  
TPO Staff  
TPO Staff  
TPO Staff  
Halifax Council of the Blind  
D.B. Alliance of Persons with Disabilities  
Halifax Council of the Blind  
Ghyabi & Associates

**Others Present:**

Aaron Van Kleeck  
Suzanne Grubbs  
Gene Ferguson

**Representing:**

Volusia County Parks, Recreation & Culture  
Florida Department of Health  
FDOT

**I. Call to Order / Roll Call / Determination of Quorum / Pledge of Allegiance**

The meeting of the River to Sea Transportation Planning Organization (TPO) Bicycle/Pedestrian Advisory Committee (BPAC) was called to order at 3:00 p.m. by Chairman Dustin Savage. The roll was called and it was determined that a quorum was present.

**II. Public Comment/Participation**

There were no public comments.

**III. Action Items**

**A. Review and Approval of August 12, 2015 BPAC Meeting Minutes**

*MOTION: A motion was made by Mr. Storke to approve the August 12, 2015 BPAC meeting minutes. The motion was seconded by Mr. Eik and carried unanimously.*

**B. Review and Recommend Approval of Resolution 2015-## Adopting the River to Sea TPO Draft 2040 Long Range Transportation Plan (LRTP)**

[Handout provided]

Ms. Parlow stated that the 2040 Long Range Transportation Plan (LRTP) summary report was included in the agenda. The resolution adopting the River to Sea TPO draft 2040 LRTP was revised and a “whereas” clause was added that reflected the statute that referred to the requirement for the 20 year plan. She expressed her appreciation for the assistance received during the past two years.

Ms. Bollenback said the TPO staff will spend the next few months writing the information and putting it together into a report. Most of this information has already been seen over the last year and a half. There has been a lot of public outreach and input from businesses and TPO partners. The TPO has put together a list of projects from the input received. The project list is required to include items such as capacity projects and lane widenings. She reviewed the LRTP funding and added that local road projects have been funded for the first time in the 2040 LRTP. The TPO pulled into the plan the funding that was set aside and allocated it to bicycle/pedestrian, transit and traffic operations projects. The TPO has also taken some of the funding available to TPOs and set it aside to improve the existing network with projects such as retrofitting Complete Streets, traffic operations, technology, landscaping, etc. to support all users.

Ms. Bollenback thanked Ms. Parlow for her work during the last two years and doing a fabulous job on the 2040 LRTP.

*MOTION: A motion was made by Mr. Storke to approve revised Resolution 2015-## adopting the River to Sea TPO draft 2040 Long Range Transportation Plan (LRTP). The motion was seconded by Ms. Campbell and carried unanimously.*

C. Review and Recommend Approval of Resolution 2015-## Amending the FY 2015/16 – 2019/20 Transportation Improvement Program (TIP)

Mr. Keeth advised that every year FDOT develops its new Work Program with an effective date of July 1. Projects that are in the calendar year (CY) move forward as planned, even though sometimes projects are not authorized as expected. These projects automatically roll forward in the Work Program but the TPO has to amend the Transportation Improvement Program (TIP) to maintain consistency with the Work Program. There were sixteen projects which were not authorized in the previous fiscal year but are now being moved into the current TIP.

*MOTION: A motion was made by Mr. Storke to approve Resolution 2015-## amending the FY 2015/16 – 2019/20 Transportation Improvement Program (TIP). The motion was seconded by Mr. Leisen and carried unanimously.*

D. Review and Recommend Approval of Resolution 2015-## Supporting a Shared Use Path Along US 17 from Washington Avenue to the Pierson/Seville Elementary School Site

Mr. Harris stated that from 2004-2011, the TPO undertook a series of school safety review studies. These studies included 53 existing and new school sites. The Pierson study involved a new school site. Pierson Elementary School was slated to be closed as well as Seville Elementary, and plans were to build a new school to replace them. Subsequently, Seville Elementary was closed but Pierson Elementary remains open. Last year a referendum was passed by the Volusia County School Board to receive additional funding, and they placed construction of the new Pierson/Seville Elementary School into their Work Program for 2017 with a projected opening in fall 2018. Pierson submitted applications to the TPO for studies; among those was an application for a trail from Washington Avenue north to the new school site along US 17 and was ranked # 6 on the priority list. The TPO is now down to #4 on the priority list, however, it may be possible to do a fifth study. It is unclear at this time if the TPO will be able to get to #6 on the priority list this fiscal year. The Volusia County School Board passed a resolution last night to recommend that a facility be built by FDOT. The Pierson Town Council may ask the TPO Board to change the priorities of these studies on the priority list. Normally, the study would not be done until the next fiscal year (FY) which is July 2016. This resolution is supporting a facility that is leading to the school. The 2008 School Safety and Review Study recommended a sidewalk be built. The Regional Trails Corridor Assessment (RTCA) designated the entire US 17 corridor as a trail gap; therefore, it recommended a trail be built along that route. Pierson has requested a trail facility. The resolution has designated a trail as well, and recommends to the TPO Board a



facility be constructed along US 17 from Washington Avenue to the new school site. FDOT has a policy that when they build trails on their right-of-way, they request maintenance agreements from the local agencies. Pierson is aware of this and is considering it, but no decision has been made yet.

Mr. Aufdenberg said that he is concerned that the trail may not be there when school opens. He wanted to know if it is being expedited.

Mr. Harris replied yes and he explained the TPO process for studies and projects. The next call for projects is in January. The entire process usually takes between two to five years. This trail could possibly be built for the opening of the school if expedited. The resolution lends support to the project.

Mr. Mostert asked if this affects other projects on the priority list by voting for this resolution.

Mr. Harris replied that if the priorities are changed, it would not knock a project off the list but would rearrange the order that they are pursued. If the US 17 study is moved to #5, the study could be done immediately; then, the #5 project would be bumped down to #6 and start at the beginning of next fiscal year on July 1.

Ms. Bollenback stated that Pierson has not made a request to change the priority list. The town wants to use safe walk zones funding. The resolution states that because the school will be built, the TPO supports the efforts of the Volusia County School Board and Pierson. The TPO Board can always change priorities if asked. This resolution supports looking for other funds to move forward with the project. If it is built as a trail, FDOT will not maintain it. Volusia County will have to maintain it and they have not said if they will. As the decision moves forward, it would not be advisable to build a sidewalk which will be replaced in a few years.

Mr. Eik asked when the school is scheduled for completion.

Mr. Harris replied that it is scheduled to be built in 2017 and open in the fall of 2018.

Mr. Eik asked about the prior vote in 2008 for a sidewalk in the same area. He asked if action was taken on this, if it would mean that the motion made in 2008 is null and void.

Mr. Harris replied no. In 2008, the study called for a sidewalk to be built in the future. It remains just a study recommendation until a sponsor wants to advance the project. Pierson did that this year with the trail submittal. This resolution is consistent with both the Pierson and Volusia County School Board requests.

Mr. Eik asked if there was any objection by the county to take over the maintenance.

Ms. Winsett advised that she would have to ask county management for an answer regarding this.

Mr. VanKleeck stated that the plan is for Volusia County to pick up maintenance on the trail along SR 17.

Ms. Winsett replied that she will get an answer from the county in case something changed.

Mr. Harris stated that there is no documentation from Volusia County yet.

Mr. Pouzar asked what the current #5 project was on the list.

Mr. Harris replied that it is the Providence Boulevard shared use path in Deltona.

Mr. Storke asked if this project was ranked #6 because the school was not built yet.

Mr. Aufdenberg replied that he could not recall.

Ms. Haldeman said that the vote would have been based on how close a school is currently.

Ms. Nicoulin stated that this resolution does not move a project forward. It just shows support and then the TPO will request that FDOT look at the design and construction.

Mr. Harris said that this is correct. Only the TPO Board can reprioritize the projects and before they would do that, Pierson would have to make the request.

***MOTION: A motion was made by Mr. Eik to approve Resolution 2015-## supporting a shared use path along US 17 from Washington Avenue to the Pierson/Seville Elementary School site. The motion was seconded by Ms. Nicoulin and carried with Mr. Leisen and Mr. Pouzar opposing.***

#### **IV. Presentation and Discussion Items**

##### **A. Presentation on Bicycle Friendly Communities**

Mr. Aufdenberg gave a PowerPoint presentation on bicycle friendly communities such as Salt Lake City, Utah and Boulder, Colorado.

Mr. Mostert said that Friday's newspaper reported that Florida is the worst place for bicycle fatalities.

Mr. Aufdenberg replied that Florida would be entering at the "bronze level" of bicycle friendly community and that some things are already in place.

Ms. Nicoulin asked Mr. Aufdenberg if he is actively working on submitting to get a designation.

Mr. Aufdenberg replied that Embry-Riddle Aeronautical University is trying to become designated and that MPOs can be bike friendly.

**B. Presentation on Bicycle Stress Level Maps**

Mr. Aufdenberg gave a PowerPoint presentation on bicycle stress level maps. The report provides a method to map the levels of traffic stress on bike riders.

**C. Discussion of the November 11, 2015 BPAC Meeting**

Mr. Harris stated that the November 11, 2015 BPAC meeting falls on Veteran's Day. The TPO offices are open but it is a federal holiday. He asked if the meeting should go forward on that day or it should be changed to another day.

Ms. Haldeman replied that the meeting should be kept on that day.

Mr. Aufdenberg agreed.

Mr. Mostert agreed.

It was the consensus of the BPAC to keep the meeting on November 11, 2015.

**V. Staff Comments**

Mr. Harris stated that when the BPAC Chairman was elected he was the alternate for Flagler County. Mr. Kerr was the primary representative but since then he stepped down and Flagler County appointed Mr. Savage as the primary representative.

**® SR/CR A1A Pedestrian Safety & Mobility Study**

Mr. Harris advised that the consultants are working on the study. A notice was sent out to stakeholders for a meeting on September 28 at Volusia County Lifeguard headquarters in Daytona Beach. There will be a presentation next month to the BPAC.

**® Time-lapse Video: installation of pedestrian bridge on US 92**

Mr. Harris was not able to show the time-lapse video due to a technical problem.

[Handout provided]

Mr. Harris announced the "Step it Up!" campaign sponsored by the Surgeon General to promote walking and walkable communities. This strategy has five goals: first, to promote

walking as a national priority, to design communities that make it safe and easy for people to walk, to promote programs and policies where people live, work and play, provide information to encourage walking and fill surveillance research and evaluation gaps. He played a video regarding the campaign.

VI. Information Items

- ® BPAC Attendance Record
- ® Cycling Savvy Flyer
- ® TPO Board Meeting Report

VII. BPAC Member Comments

Mr. Aufdenberg announced a “Fix a Flat” class on September 12 at 9:00 a.m. at the Daytona Bike Center on Granada Boulevard in Ormond Beach. He will be doing one at City Island Library in Daytona Beach on October 31 at 2:00 p.m. He announced a Cycling Savvy class on September 18-19 and noted that Mr. Harris would be joining the class. He announced an Astronomy Open House at Embry-Riddle Aeronautical University and added that cards are on the table with information. He will be doing pedestrian counts with Ms. Tyrone on September 14.

Ms. Haldeman spoke about the new rail trail in Edgewater which is not officially open yet. It is expected to open in November and is a great trail. She voiced some concerns, for example, a neighbor has a handicapped child and getting them across the intersection is difficult. Also, crossing at Mission Road is hard because the speed limit is 45 mph. She suggested that the county put a stop light or flashing light, even though there is signage.

Ms. Nicoulin reminded members of the November 13-15 Bike Florida Celebration in Clermont.

VIII. Adjournment

The BPAC meeting adjourned at 4:18 p.m.

River to Sea Transportation Planning Organization

---

Mr. Dustin Savage, Chairman  
Bicycle/Pedestrian Advisory Committee (BPAC)

**CERTIFICATE:**

The undersigned duly qualified and acting Recording Secretary of the River to Sea TPO certifies that the foregoing is a true and correct copy of the minutes of the September 9, 2015 regular meeting of the Bicycle/Pedestrian Advisory Committee (BPAC), approved and duly signed this 14<sup>th</sup> day of October 2015.

---

Marie Duda, Recording Secretary  
River to Sea Transportation Planning Organization

SUMMARY SHEET  
BPAC  
OCTOBER 14, 2015

IV. Action Items

- B) Review and Recommend Approval of Resolution 2015-## amending the FY 2015/16 – 2019/20 Transportation Improvement Program (TIP)

**Background Information:**

This proposed TIP amendment addresses the following projects:

1. 4355611 – Old Kings Road Extension - Phase II. Change phase from construction (CST) – to right-of-way (ROW); change funding source from County Incentive Grant Program (CIGP) to General Revenue for SCOP (GRSC).
2. 4380121 – Volusia Section 5339 Bus & Bus Facilities. Add project.
3. 4387441 – Flagler County Transit FTA Section 5316 Job Access & Reverse Commute. Add project.
4. 4388681 – Volusia-Sec 5339 Small Urban Capital. Add project.

The proposed amendment is more fully described in the enclosed Resolutions 2015-## and Attachment "A".

*Action Requested:*

*Motion to recommend approval of Resolution 2015-## amending the FY 2015/16 – 2019/20 Transportation Improvement Program (TIP)*

RIVER TO SEA TRANSPORTATION PLANNING ORGANIZATION

RESOLUTION 2015-##

RESOLUTION OF THE RIVER TO SEA TRANSPORTATION PLANNING ORGANIZATION  
AMENDING THE FY 2015/16 TO FY 2019/20  
TRANSPORTATION IMPROVEMENT PROGRAM (TIP)

---

WHEREAS, the River to Sea Transportation Planning Organization (TPO) is the duly designated and constituted body responsible for carrying out the urban transportation planning and programming process for Volusia County and portions of Flagler County inclusive of the cities of Flagler Beach, Beverly Beach and portions of Palm Coast and Bunnell; and

WHEREAS, Florida Statutes 339.175; 23 U.S.C. 134; and 49 U.S.C. 5303 require that the urbanized area, as a condition to the receipt of federal capital or operating assistance, have a continuing, cooperative and comprehensive transportation planning process that results in plans and programs consistent with the comprehensively planned development of the urbanized area; and

WHEREAS, the River to Sea TPO shall annually endorse and amend as appropriate, the plans and programs required by 23 C.F.R. 450.300 through 450.324, among which is the Transportation Improvement Program (TIP); and

WHEREAS, the River to Sea TPO's adopted TIP is required to be consistent with the Florida Department of Transportation's adopted Five-Year Work Program; and

WHEREAS, the Florida Department of Transportation has provided additional information to the River to Sea TPO regarding the FDOT adopted Five-Year Work Program.

NOW, THEREFORE, BE IT RESOLVED, by the River to Sea TPO that the:

1. River to Sea TPO's FY 2015/16 to FY 2019/20 TIP is hereby amended as shown in Attachment "A" attached hereto and made a part of this resolution; and the
2. Chairperson of the River to Sea TPO (or her designee) is hereby authorized and directed to submit the FY 2015/16 to FY 2019/20 TIP as amended to the:
  - a. Florida Department of Transportation;
  - b. Federal Transit Administration (FTA) (through the Florida Department of Transportation);
  - c. Federal Highway Administration (FHWA) (through the Florida Department of Transportation); and the
  - d. Federal Aviation Administration (FAA) (through the Orlando Airport District Office).

DONE AND RESOLVED at the regular meeting of the River to Sea TPO held on the 28<sup>th</sup> day of October 2015.

RIVER TO SEA TRANSPORTATION PLANNING ORGANIZATION

---

VOLUSIA COUNTY COUNCIL MEMBER PAT PATTERSON  
CHAIRMAN, RIVER TO SEA TPO

**CERTIFICATE:**

The undersigned, duly qualified and acting Recording Secretary of the River to Sea TPO, certifies that the foregoing is a true and correct copy of a resolution adopted at a legally convened meeting of the River to Sea TPO held on October 28, 2015.

**ATTEST:**

---

PAMELA C. BLANKENSHIP, RECORDING SECRETARY  
RIVER TO SEA TRANSPORTATION PLANNING ORGANIZATION

# **ATTACHMENT “A” Resolution 2015-##**

**Amending the  
FY 2015/16 to FY 2019/20  
Transportation Improvement Program (TIP)**



**October 28, 2015**



**4355611                      Old Kings Road Extension - Phase II**

**From:** Matanzas Woods Pkwy  
**To:** Old Kings Rd

**Work Mix:** NEW ROAD CONSTRUCTION - 2 LANE  
**Responsible Agency:** City of Palm Coast

*----- Current Adopted FY 2015/16 - FY 2019/20 TIP -----*

<u>Phase</u>	<u>Fund Source</u>	<u>FY 2015/16</u>	<u>FY 2016/17</u>	<u>FY 2017/18</u>	<u>FY 2018/19</u>	<u>FY 2019/20</u>	<u>Total</u>
CST	CIGP	600,000	0	0	0	0	600,000
		<b>600,000</b>	<b>0</b>	<b>0</b>	<b>0</b>	<b>0</b>	<b>600,000</b>

*----- Proposed Amended FY 2015/16 - FY 2019/20 TIP -----*

<u>Phase</u>	<u>Fund Source</u>	<u>FY 2015/16</u>	<u>FY 2016/17</u>	<u>FY 2017/18</u>	<u>FY 2018/19</u>	<u>FY 2019/20</u>	<u>Total</u>
ROW	GRSC	600,000	0	0	0	0	600,000
		<b>600,000</b>	<b>0</b>	<b>0</b>	<b>0</b>	<b>0</b>	<b>600,000</b>

**Description:** Extend Old Kings Road northward from Matanzas Woods Parkway to Old Kings Road. (Reference 2035 Long Range Transportation Plan, Addendum #1, pg. 19.)

**4380121**

**Volusia Section 5339 Bus & Bus Facilities**

From: Volusia County-wide  
To:

Work Mix: CAPITAL FOR FIXED ROUTE  
Responsible Agency: Votran

*----- Current Adopted FY 2015/16 - FY 2019/20 TIP -----*

<u>Phase</u>	<u>Fund Source</u>	<u>FY 2015/16</u>	<u>FY 2016/17</u>	<u>FY 2017/18</u>	<u>FY 2018/19</u>	<u>FY 2019/20</u>	<u>Total</u>
--------------	--------------------	-------------------	-------------------	-------------------	-------------------	-------------------	--------------

*----- Proposed Amended FY 2015/16 - FY 2019/20 TIP -----*

<u>Phase</u>	<u>Fund Source</u>	<u>FY 2015/16</u>	<u>FY 2016/17</u>	<u>FY 2017/18</u>	<u>FY 2018/19</u>	<u>FY 2019/20</u>	<u>Total</u>
CAP	DU	<u>312,500</u>	<u>0</u>	<u>0</u>	<u>0</u>	<u>0</u>	<u>312,500</u>
CAP	LF	<u>78,125</u>	<u>0</u>	<u>0</u>	<u>0</u>	<u>0</u>	<u>78,125</u>
		<u>390,625</u>	<u>0</u>	<u>0</u>	<u>0</u>	<u>0</u>	<u>390,625</u>

**Description:** Votran will purchase buses and equipment for fixed-route service. (Reference 2035 Long Range Transportation Plan, pgs 49-63.)

**4387441**

**Flagler County Transit FTA Section 5316 Job Access & Reverse Commute**

From: Flagler County-wide  
To:

Work Mix: COMMUTER TRANS. ASSISTANCE  
Responsible Agency: Flagler County Transportation

*----- Current Adopted FY 2015/16 - FY 2019/20 TIP -----*

<u>Phase</u>	<u>Fund Source</u>	<u>FY 2015/16</u>	<u>FY 2016/17</u>	<u>FY 2017/18</u>	<u>FY 2018/19</u>	<u>FY 2019/20</u>	<u>Total</u>
--------------	--------------------	-------------------	-------------------	-------------------	-------------------	-------------------	--------------

*----- Proposed Amended FY 2015/16 - FY 2019/20 TIP -----*

<u>Phase</u>	<u>Fund Source</u>	<u>FY 2015/16</u>	<u>FY 2016/17</u>	<u>FY 2017/18</u>	<u>FY 2018/19</u>	<u>FY 2019/20</u>	<u>Total</u>
CAP	DU	<u>149,999</u>	<u>0</u>	<u>0</u>	<u>0</u>	<u>0</u>	<u>149,999</u>
OPS	LF	<u>149,999</u>	<u>0</u>	<u>0</u>	<u>0</u>	<u>0</u>	<u>149,999</u>
		<u>299,998</u>	<u>0</u>	<u>0</u>	<u>0</u>	<u>0</u>	<u>299,998</u>

**Description:** Flagler County will use these FTA Section 5316 funds to cover operating expenses for projects that transport low income individuals to and from jobs and activities related to employment, and for reverse commute projects. (Reference 2035 Long Range Transportation Plan, pgs 49-63.)

**4388681**

**Volusia-Sec 5339 Small Urban Capital**

From: Volusia County-wide  
To:

Work Mix: CAPITAL FOR FIXED ROUTE  
Responsible Agency: Votran

*----- Current Adopted FY 2015/16 - FY 2019/20 TIP -----*

<u>Phase</u>	<u>Fund Source</u>	<u>FY 2015/16</u>	<u>FY 2016/17</u>	<u>FY 2017/18</u>	<u>FY 2018/19</u>	<u>FY 2019/20</u>	<u>Total</u>
--------------	--------------------	-------------------	-------------------	-------------------	-------------------	-------------------	--------------

*----- Proposed Amended FY 2015/16 - FY 2019/20 TIP -----*

<u>Phase</u>	<u>Fund Source</u>	<u>FY 2015/16</u>	<u>FY 2016/17</u>	<u>FY 2017/18</u>	<u>FY 2018/19</u>	<u>FY 2019/20</u>	<u>Total</u>
CAP	DU	<u>283,991</u>	<u>0</u>	<u>0</u>	<u>0</u>	<u>0</u>	<u>283,991</u>
CAP	LF	<u>799,998</u>	<u>0</u>	<u>0</u>	<u>0</u>	<u>0</u>	<u>799,998</u>
		<u>1,083,989</u>	<u>0</u>	<u>0</u>	<u>0</u>	<u>0</u>	<u>1,083,989</u>

**Description:** Funding for purchase of fixed-route buses and other equipment. (Reference River to Sea TPO 2035 Long Range Transportation Plan, pgs 49-63.)

SUMMARY SHEET  
BPAC  
OCTOBER 14, 2015

IV. Action Items

- C) Review and Recommend Approval of the Providence Boulevard Shared Use Path Feasibility Study Task Order

**Background Information:**

The R2CTPO requires the professional services of consultants to support its planning staff in developing cost estimate feasibility studies for bicycle and pedestrian projects. Each consulting firm submits a task order for approval by the R2CTPO prior to commencing work on a project. In accordance with the R2CTPO Purchasing Manual approved August 27, 2014, task orders greater than \$25,000 are subject to approval by the TPO Board.

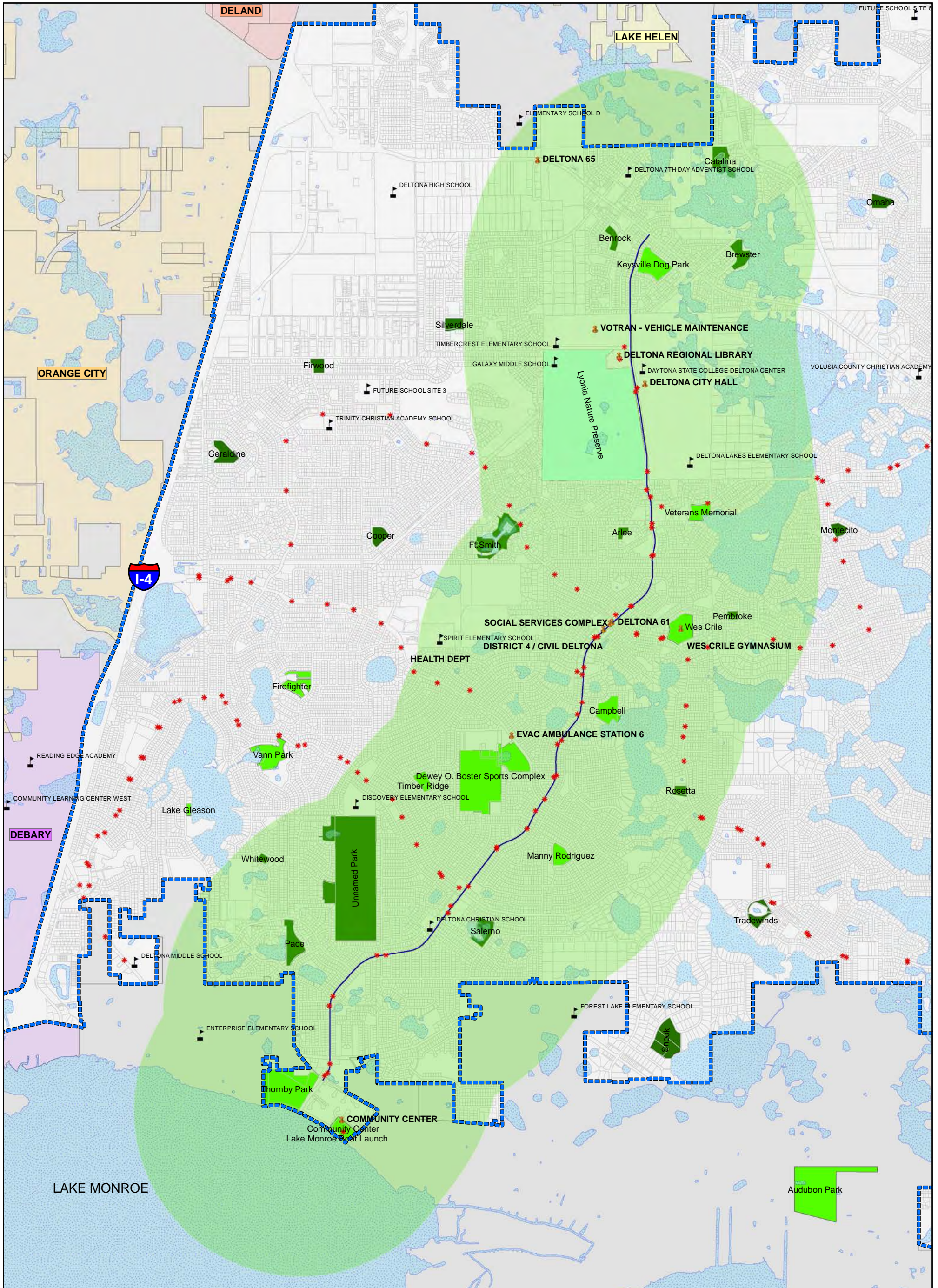
Bicycle and Pedestrian Feasibility Study Task Order

- Providence Boulevard Shared Use Path (Deltona)  
Proposed Fee: \$27,734 submitted by Infrastructure Engineers, Inc.

*Action Requested:*

*Motion to recommend approval of the Providence Boulevard Shared Use Path Feasibility Study Task Order*





**PROVIDENCE TRAIL MAP**

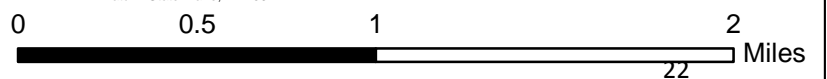
PREPARED BY:  
**CITY OF DELTONA**  
 PLANNING AND DEVELOPMENT SERVICES  
 2345 PROVIDENCE BLVD., DELTONA, FL, 32725  
 PHONE: (386) 878-8600 FAX: (386) 878-8601

SHEET NO. 1 of 1  
 DRAWN BY: **SHERRI CAMPBELL**  
 CREATED: **05/09/2014**  
 APPROVED BY: **CHRIS BOWLEY, AICP**  
 DIRECTOR PLANNING AND DEVELOPMENT SERVICES

**Legend**

- |                      |                      |
|----------------------|----------------------|
| Providence Blvd      | <b>City Parks</b>    |
| 1 Mile Buffer        | <b>Park Status</b>   |
| Facilities In Buffer | EXISTING (CITY PARK) |
| Schools              | PLANNED (CITY PARK)  |
| Bus Stops            | COUNTY PARK          |
| City Boundary        |                      |
| Lakes                |                      |

**GIS MAP DISCLAIMER:**  
 THIS MAP IS NOT TO BE USED FOR TRANSFER OF PROPERTY AND DOES NOT REPRESENT A SURVEY.  
 This map was created by the City of Deltona staff using data gathered by the City and Volusia County. No decision involving a risk of economic loss or physical injury should be made in reliance on this Map nor should it be used as a substitute for a survey. The information provided on this document should be used as a guide only. The City of Deltona shall not be held liable for any claim for any loss or damage as a result of reliance on the information contained in this document.  
 Please report any inaccuracies to the City of Deltona GIS department at 386-878-8609  
 Datum: State Plane, NAD83 HARN





SUMMARY SHEET  
BPAC  
OCTOBER 14, 2015

IV. Action Items

D) Appointment/Reappointment of BPAC Project Review and Transportation Improvement Program (TIP) Subcommittee Members

**Background Information:**

The BPAC Project Review Subcommittee is responsible for assisting staff in developing the yearly update to the TPO's Priority Lists of Bicycle/Pedestrian Projects and Regional Trail Projects. At least 4 members are preferred for the BPAC Project Review Subcommittee. The Transportation Improvement Program (TIP) Subcommittee is responsible for assisting staff in developing the TIP and the yearly update to the TPO's Priority Lists of Traffic Operations and Safety Projects and Transportation Alternatives Projects. The BPAC, CAC and TCC appoint approximately 3 members to serve on the TIP Subcommittee, which will meet several times prior to the adoption of the next TIP in June 2016. Current subcommittee members are eligible for reappointment.

Current BPAC Project Review Subcommittee Members

- Nic Mostert
- Colleen Nicoulin
- Roy Walters/Jason Aufdenberg

Current TIP Subcommittee Members

- Scott Leisen
- Robert "Bob" Storke

*Action Requested:*

*Motion to appoint/reappoint BPAC Project Review Subcommittee Members*  
*Motion to appoint/reappoint TIP Subcommittee Members*

SUMMARY SHEET  
BPAC  
OCTOBER 14, 2015

V. Presentations and Discussion Items

A) Presentation on the SR/CR A1A Pedestrian Safety & Mobility Study


**Background Information:**

The R2CTPO's Pedestrian Safety & Mobility Study began in July 2015. The goals of the study are to analyze safety issues, identify safety countermeasures and recommend implementable safety improvements along SR/CR A1A from Bethune Beach to Marineland. The study is being conducted by Kittelson & Associates, Inc. A summary of the first stakeholder meeting held on September 28, 2015 is provided with this agenda package. The study is scheduled to continue through March 2016.

*Action Requested:*

*No action is required unless otherwise directed by the BPAC*





CR/SR A1A  
**PEDESTRIAN SAFETY & MOBILITY STUDY**

RIVER TO SEA  
TRANSPORTATION PLANNING  
ORGANIZATION

Bicycle/Pedestrian Advisory Committee Meeting | October 14, 2015

PROJECT OVERVIEW + SCHEDULE



## Project Overview

### Study Limits

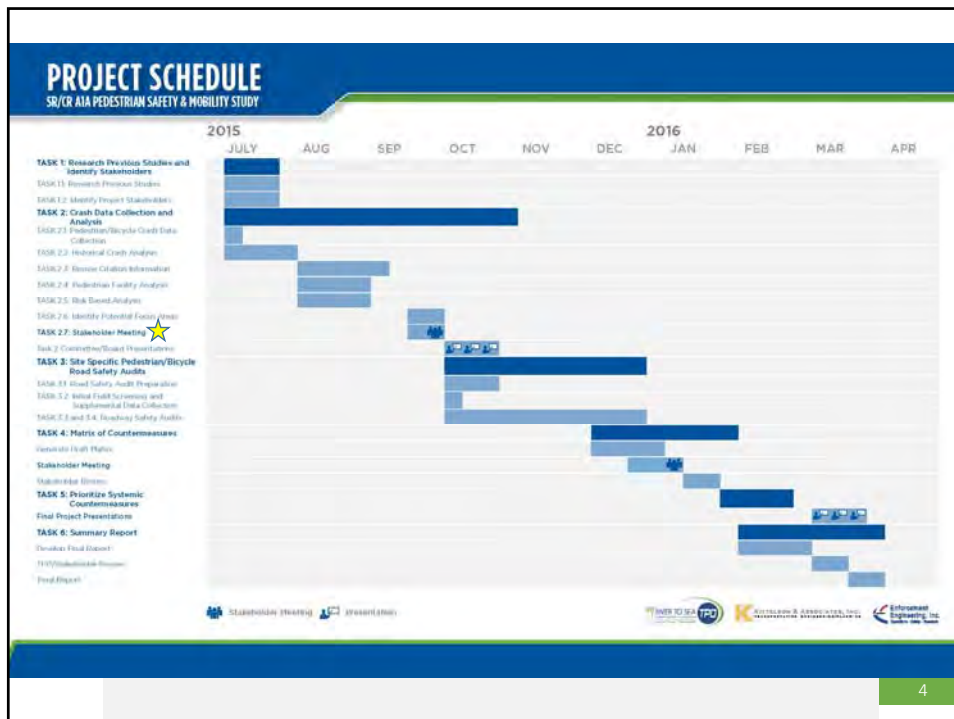
Bethune Beach (Volusia County) to just south of Marineland (Flagler County) – 56.5 total miles in length

### Primary Goal

Recommend implementable pedestrian/bicycle safety improvements/countermeasures at strategic locations along A1A

### Secondary Goal

Expand countermeasures to be applicable along other sections of A1A in a systemic manner

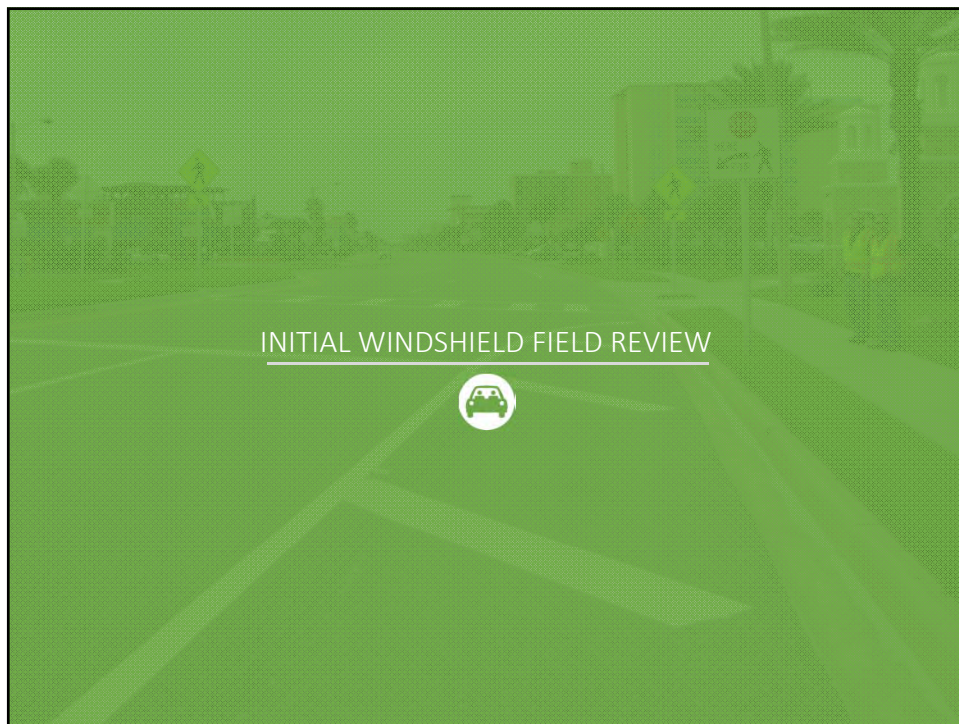






## Previous Studies Review

- Four studies performed along A1A between 2008 and 2015:
  - SR A1A Pedestrian Safety Study, Daytona Beach Shores (2015)
    - Recommendations included adding new mid-block crosswalks, adding Rectangular Rapid Flashing Beacons (RRFBs), and modifying markings/signs at existing crossings
  - Pedestrian Safety Audit Report, Daytona Beach (2014)
    - FDOT performed a pedestrian road safety audit from Earl Street to Oakridge Boulevard, proposing short, near, and long-term countermeasures along corridor
  - Pedestrian Safety Study for CR A1A, New Smyrna Beach (2012)
    - Recommendations included installing continuous bike facilities, sidewalks where missing, RRFBs, median refuge islands, among others
  - CR A1A Sidewalk Feasibility Study, Daytona Beach Shores (2008)
    - Recommendations included road diet, constructing 8' sidewalk, consolidating driveways, and installing crosswalks



## Initial Windshield Field Review

- Three distinct roadway types/land use elements along corridor:
  - #1 – S Atlantic Ave. from Bethune Beach through New Smyrna Beach and Ponce Inlet/Daytona Beach Shores south of Dunlawton Ave. (SR 421)





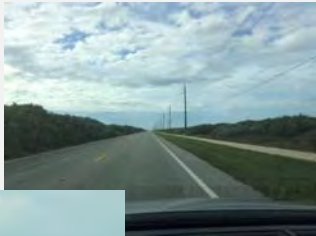
### Initial Windshield Field Review

- Three distinct roadway types/land use elements along corridor:
  - #2 – SR A1A in Daytona Beach Shores/Daytona Beach/Ormond Beach from Dunlawton Ave. (SR 421) to Granada Blvd. (SR 40)




### Initial Windshield Field Review

- Three distinct roadway types/land use elements along corridor:
  - #3 – SR A1A in Volusia/Flagler Counties north of Granada Blvd. (SR 40)







 Law Enforcement Coordination

- Uniform Traffic Citation (UTC)
  - UTC data does not have location information that lends itself to mapping
  - Sorted through data by jurisdiction, narrowed non-crash citations to relevant hazardous moving violations
  - Pedestrian and bicycle citations accounted for 1.1% of overall citation data (role of warnings)
  - Pedestrian/bicycle citation detail revealed specific subsections and violations

12

## Law Enforcement Coordination

- Face-to-face meetings or phone calls with Police Chiefs and traffic supervisors of law enforcement agencies along A1A

High degree of interest in the project

Consensus that this is a high priority traffic safety issue

Nature of the problem differs among jurisdictions (road users, roadway conditions, pedestrian features)

Enthusiasm for future participation in project and FDOT HVE funding

13

## CRASH DATA + FOCUS AREAS



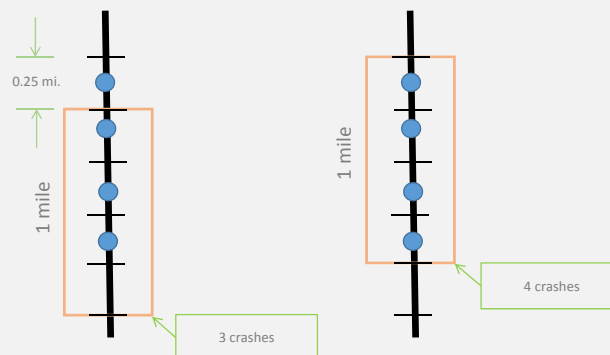
## Crash Data Collection

- Six years of pedestrian/bicycle crash data collected 2009 – 2014
- 95 pedestrian and 63 bicycle totaling 158 crashes
  - 14 fatal, 128 injury, and 16 property damage only
  - 39% occurred at night, 14% alcohol and/or drug related
  - 20% occurred with a pedestrian/bicyclist under the age of 20 and 18% occurred with 65 and older

15

## Crash Data Analysis

### Sliding Window Analysis



- Reviewed each segment for total crash frequency and crash severity weighted by crash costs
- Grouped nearby 1 mile segments together to identify focus areas

16



## Crash Data Analysis

### Risk Based Analysis

- Reviewed roadway and land use metrics that potentially factor into pedestrian/bicycle crashes:
  - Figure 2 – 50% of crashes on segments between 15,000 and 20,000 AADT (11.4 miles/20% of corridor length)
  - Figure 3 – 62% of crashes with 30 or 35 mph posted speed
  - Figure 4 – 67% of crashes on 4 lane divided (6 miles/11% corridor length) or 5 lane with two-way left-turn lane (10.6 miles/19% corridor length)
  - Figure 8 – 32% of crashes away from marked crossings (both with and without active control device)
  - Figure 9 – 39% of crashes under dusk, dark without street light, or dark with street light conditions
  - Figure 5-7 – Reviewed crashes relative to ped/bike facilities, bus stops, beach parking, parks, and civic land uses

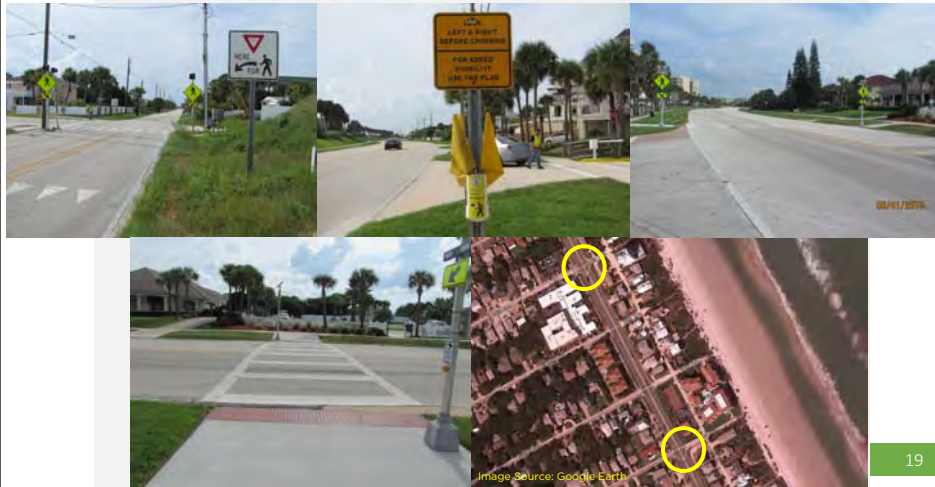
17



18

## Focus Areas Discussion

- No segments of S Atlantic Ave. from Bethune Beach through New Smyrna Beach and Ponce Inlet/Daytona Beach Shores south of Dunlawton Ave. (SR 421) identified in focus area review



19

## Focus Area A

### Peninsula Dr. to 3<sup>rd</sup> Ave. – New Smyrna Beach

- 0.60 miles, 7 bicycle and 2 pedestrian crashes (all resulted in injury)
- 4 In divided/5 In section, 40 mph posted speed, mainly retail, restaurant, and civic land uses
- 8 of 9 occurred near marked crossing
- 6 of 9 crashes occurred at signals or at driveways/stop controlled intersections
- Pedestrian/bicyclist had ROW in 6 of 9 crashes



20

**Focus Area B**

**Park Ave. to Frances Ter. – Daytona Beach Shores/Daytona Beach**

- 0.95 miles, 7 pedestrian and 1 bicycle crashes (all resulted in injury)
- 5 In section, 35 mph posted speed, mainly hotel on east side and retail on west side
- 6 occurred at night and 4 occurred at or near bus stops
- 5 occurred outside of marked crossing influence area and were crossing A1A mid-block
- Pedestrian/bicyclist was non-local (lived outside the ZIP where crash occurred) in 7 of 8 crashes
- Vehicle had ROW in 5 of 8 crashes



Facing South

21

**Focus Area C**

**International Speedway Blvd. to Ocean Shore Resort (just N of University Blvd.) – Daytona Beach**

- 1.60 miles, 31 pedestrian and 6 bicycle crashes (2 fatal and 32 injury related)
- 4 In divided/5 In section, 35 mph posted speed, mainly hotels/parks on east side and retail/civic land uses on west side
- 54% occurred at night and 32% occurred at or near bus stops
- 37% occurred at signalized intersections while 32% were crossing A1A mid-block
- Pedestrian/bicyclist was non-local (lived outside the ZIP where crash occurred) in 81% of crashes
- The pedestrian/bicyclist had the ROW in 35% of crashes



Facing North

22

### Focus Area D

#### Plaza Blvd. to Rockefeller Dr. – Daytona Beach/Ormond Beach

- 1.15 miles, 8 pedestrian and 8 bicycle crashes (15 injury related)
- 4 In divided/5 In section, 35 mph posted speed, mainly hotels/parks on east side and retail/restaurant land uses on west side
- 50% occurred at or near bus stops
- 7 crashes occurred at driveways/stop controlled intersections and 5 crashes occurred mid-block
- In 6 of the bicycle crashes, the cyclist was riding against the flow of traffic
- Pedestrian/bicyclist was non-local (lived outside the ZIP where crash occurred) in 44% of crashes



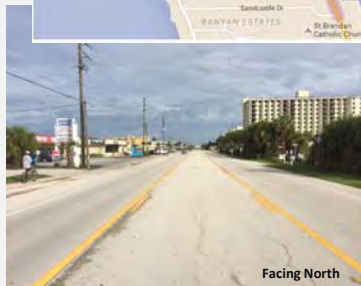
Facing South

23

### Focus Area E

#### Sandcastle Dr. to Holland Rd. – Ormond Beach/Ormond-by-the-Sea

- 1.45 miles, 6 pedestrian and 4 bicycle crashes (3 fatal and 7 injury related)
- 2 In undivided/3 In section, 40 mph posted speed, mainly hotels/residential on east side and restaurant/commercial land uses on west side
- 50% occurred at night and 30% occurred near parks
- All 10 crashes either occurred at driveways/stop controlled intersections or occurred mid-block
- The pedestrian/bicyclist had the ROW in 30% of crashes
- Pedestrian/bicyclist was non-local (lived outside the ZIP where crash occurred) in 50% of crashes



Facing North

24

**Focus Area F**

**Kathy Dr. to Wisteria Dr. – Ormond-by-the-Sea**

- 0.70 miles, 5 pedestrian and 2 bicycle crashes (1 fatal and 6 injury related)
- 2 In undivided section, 40 mph posted speed, beach on east side and residential land uses on west side
- 57% occurred at night
- All 7 crashes either occurred at driveways/stop controlled intersections or occurred mid-block
- The pedestrian/bicyclist had the ROW in 30% of crashes
- The cyclist was riding against traffic in both bicycle crashes



25

**Focus Area G**

**S 23<sup>rd</sup> St. to S 11<sup>th</sup> St. – Flagler Beach**

- 1.50 miles, 6 pedestrian and 3 bicycle crashes (1 fatal and 7 injury related)
- 2 In undivided section, 45 mph posted speed, beach on east side and residential land uses on west side
- All 9 crashes either occurred at driveways/stop controlled intersections, occurred mid-block, or along the side of the roadway
- Pedestrian/bicyclist was non-local (lived outside the ZIP where crash occurred) in 5 crashes
- The pedestrian/bicyclist had the ROW in 3 crashes



26



## Focus Area H

### S 6<sup>th</sup> St. to N 13<sup>th</sup> St. – Flagler Beach

- 1.00 miles, 4 pedestrian and 3 bicycle crashes (all injury related)
- 2 In undivided section, 35 mph posted speed, beach/Flagler Beach Pier on east side and residential/restaurant land uses on west side
- 6 of 7 crashes occurred near beach parking areas and parks
- 3 crashes occurred at signalized intersections
- Pedestrian/bicyclist was non-local (lived outside the ZIP where crash occurred) in 4 crashes
- The pedestrian/bicyclist had the ROW in 3 crashes



Facing North

27

## Focus Area I

### 19<sup>th</sup> Rd. to Apache Dr. – Flagler County

- 1.60 miles, 2 bicycle and 1 pedestrian crashes (2 fatal and 1 injury related)
- 2 In undivided section, 50/55 mph posted speed, rural land uses with scattered residential pockets
- 2 crashes occurred at night
- 2 crashes occurred along the side of the roadway and 1 crash occurred mid-block
- The vehicle had the ROW in all 3 crashes

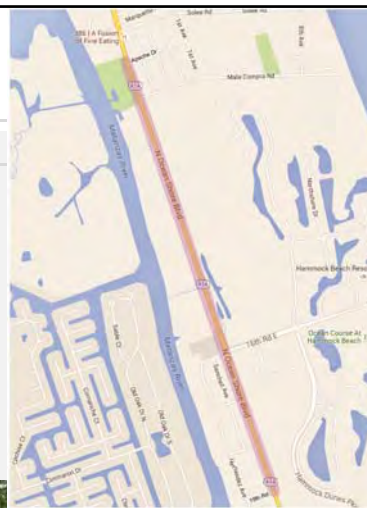


Image © 2012 Google Earth, Imagery © 2014

Facing North

28

## Potential Field Review Locations

- Recommend focus areas D, E, and G for field review
  - D – Daytona Beach/Ormond Beach: 16 crashes, 4 In divided/5 In section
  - E – Ormond Beach/Ormond-by-the-Sea: 10 crashes (3 fatal), 2 In undivided/3 In section
  - G – Flagler Beach: 9 crashes (1 fatal), 2 In undivided section
- Could also look into reviewing focus areas A and C
  - A – New Smyrna Beach: 9 crashes, 4 In divided/5 In section
  - C – Daytona Beach: 37 crashes (2 fatal), 9 total crashes, 4 In divided/5 In section
    - Segment from Earl St. to Oakridge Blvd. previously studied, 11 crashes from study included in data set

29

NEXT STEPS



## » Next Steps

- Project briefing presentations to BPAC, CAC, TCC, and TPO Board – October
- Field reviews for three focus areas – October through December

31

## PROJECT CONTACT INFORMATION



**R2C TPO PROJECT MANAGER:**  
Stephan C. Harris  
Bicycle & Pedestrian Coordinator  
2570 W. International Speedway Blvd.  
Suite 100  
Daytona Beach, FL 32114  
Phone: 386.226.0422; Ext. 20428  
[sharris@r2ctpo.org](mailto:sharris@r2ctpo.org)



**CONSULTANT PROJECT MANAGER:**  
Adam M. Burghdoff, P.E.  
225 E. Robinson St.  
Suite 450  
Orlando, FL 32801  
Phone: 386.226.0422; Ext. 20428  
[aburghdoff@kittelsohn.com](mailto:aburghdoff@kittelsohn.com)





## STAKEHOLDER MEETING SUMMARY

### CR/SR A1A Pedestrian Safety & Mobility Study

---

**Meeting Date & Time:** September 28, 2015; 2:00 – 4:00 PM. **Project #:** 13376.05

**Location:** Lifeguard Headquarters 3<sup>rd</sup> Floor; 515 S. Atlantic Ave., Daytona Beach FL 32118

---

### Attendees

Attendees participated by attending the meeting. Please see the attached sign in sheet for those who attended the meeting.

### Meeting Presentation

A presentation was given outlining the goals/objectives of the study, the previous studies performed along A1A, the initial field review performed by the study team, the law enforcement coordination performed to-date, the crash data analysis, and the focus areas identified for further study. Adam Burghdoff was the lead presenter, with Jack Freeman (Kittelison & Associates, Inc. (KAI)), Travis Hills (KAI), and Grady Carrick (Enforcement Engineering, Inc.) also presenting on specific sections of the presentation.

### Discussion Topics

During the course of the presentation, the group discussed the following topics:

- A stakeholder mentioned that between Peninsula Avenue and 3<sup>rd</sup> Avenue in New Smyrna Beach, 2 additional pedestrian refuge islands were recommended by the locals beyond the two already built, but the recommendation was denied by FDOT.
- For some of the streetlights in Flagler County, the power company is the one that provides the shields that help with the turtle lighting. In some places, the lights are turned off instead of using the shields because they are not hurricane rated.
- Rectangular Rapid Flashing Beacons (RRFBs) were recommended at the Bonefish Grill mid-block crossing that was recently constructed, but they were not installed.
- A traffic calming project is currently underway near the pier in Flagler Beach.
  - A mid-block crossing was recently constructed at 8<sup>th</sup> Avenue.
- Along Focus Area E, a stakeholder mentioned there have been a high number of near misses between pedestrians and vehicles.

- The Beverly Beach mayor was in attendance, and discussed the following:
  - Recommended adding a portion of Beverly Beach to the Flagler Beach focus area (Areas G and H), possibly performing a combined field review with these two locations.
  - From the center of Flagler Beach to the north, traffic congestion is an issue. He would like to see the speed limit reduced to 35 mph from the southern city limits of Flagler Beach to the northern city limits of Beverly Beach.
- The stakeholder group agreed that it will take engineering, education, and enforcement countermeasures to help the pedestrian/bicycle safety along the corridor.
- A stakeholder recommended performing safety field reviews on Focus Area A and C as well as the three other focus areas recommended to the group (D, E, and G)

## Next Steps

The following are next steps in the project:

1. Project briefing presentations to BPAC, CAC, TCC, and TPO Board (October)
2. Field reviews for three focus areas (October through November)
  - a. Preparation work includes:
    - i. Corridor specific data collection
    - ii. Historical crash analysis
    - iii. Crash diagram generation

These notes are Travis Hills' understanding of the discussions during this meeting. Comments or corrections to the information reported above should be directed to him at 407-373-1125 or [thills@kittelson.com](mailto:thills@kittelson.com).

# SR/CR A1A Pedestrian Safety & Mobility Study

## Pedestrian Crashes



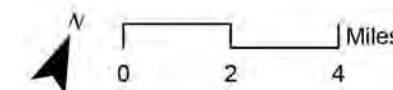
## Bicycle Crashes



### Legend

- Fatal
- Injury
- Non Injury
- Study Corridor

Focus Location	Jurisdiction	From	To	Length (Miles)	Property Damage Only	Injury	Fatal	Total Crashes
A	New Smyrna Beach	3rd Ave.	Peninsula Dr.	0.60	0	9	0	9
B	Daytona Beach Shores / Daytona Beach	Park Ave.	Frances Ter.	0.95	0	8	0	8
C	Daytona Beach	International Speedway Blvd.	Ocean Shore Resort (Just North of University Blvd.)	1.60	3	32	2	37
D	Daytona Beach / Ormond Beach	Plaza Blvd.	Rockefeller Dr.	1.15	1	15	0	16
E	Ormond Beach / Ormond-by-the-Sea	Sandcastle Dr.	Holland Rd.	1.45	0	7	3	10
F	Ormond-by-the-Sea	Kathy Dr.	Wisteria Dr.	0.70	0	6	1	7
G	Flagler Beach	S 23rd St.	S 11th St.	1.50	1	7	1	9
H	Flagler Beach	S 6th St.	N 13th St.	1.00	0	7	0	7
I	Flagler County	19th Rd.	Apache Dr.	1.60	0	1	2	3



SUMMARY SHEET  
BPAC  
OCTOBER 14, 2015

V. Presentations and Discussion Items

B) Presentation on the US 92 (International Speedway Boulevard) Corridor Master Management Plan

**Background Information:**

The purpose of the US 92 (International Speedway Boulevard) Corridor Master Management Plan Study is to develop a more comprehensive and up-to-date master plan, including an implementation program, to guide and coordinate FDOT safety, enhancement, transit, congestion management and economic development investments along the US 92 corridor. The study limits are from I-4 to SR A1A (approximately 9.3 miles long).

*Action Requested:*

*No action is required unless otherwise directed by the BPAC*



## River to Sea TPO BPAC Meeting

	<p><b>US 92/International Speedway Boulevard Corridor Master Management Plan</b> From Interstate 4 (I-4) to SR A1A (Atlantic Ave) Financial Project Number: 437398-1</p>
	 <p><i>New sidewalk along US 92, between Festress Blvd. and Williamson Blvd.</i></p>

[www.CFLRoads.com](http://www.CFLRoads.com)

1

## Study Purpose

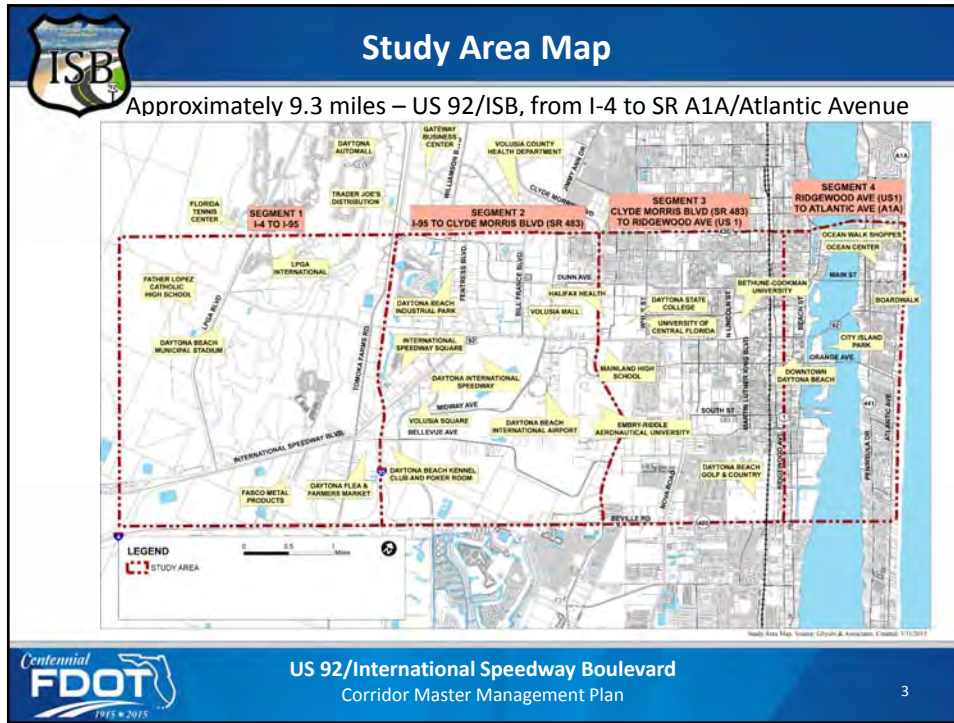
To develop a more comprehensive and up-to-date master plan, including an implementation program, to guide and coordinate FDOT safety, enhancement, transit, congestion management and economic development investments along the US 92 corridor.

		
-------------------------------------------------------------------------------------	-------------------------------------------------------------------------------------	--------------------------------------------------------------------------------------

*US 92 near the intersection of SR A1A      Mainland High School near the intersection of Clyde Morris Blvd      Crossing Nova Road, heading east on US 92*

 **US 92/International Speedway Boulevard**  
Corridor Master Management Plan

2




### Existing Conditions

Summary of Existing Conditions & Challenges

- On-going studies and projects
- Varying speeds along corridor
- Long distances between crosswalks
- Connectivity for bicyclist and pedestrians
- Safety concerns
- Balance multi-modal needs with vehicular mobility
- Constrained right-of-way in select locations
- Transit service and frequencies

*ISB near Bethune-Cookman University*


**FDOT** REVIEW OF FIELD EVALUATION PCT MEETING




## Identification of Corridor Needs

### General Recommended Improvements


- Connect bicycle and pedestrian gaps
- Improved bicycle facilities
- Widen sidewalks in select areas
- Reduce speed limits in select areas
- Addition of raised median islands in select areas




*Enhanced Landscaping*




*Improved Pedestrian Facilities*



*Buffered Bicycle Lanes*



REVIEW OF FIELD EVALUATION PCT MEETING
5




## Initial Corridor Assessment & Alternatives Evaluation

### Examples of Recommended Improvements from Evaluation Process

- 12' shared use paths west of Clyde Morris Blvd
- 7' buffered bicycle lanes west of Nova Rd
- Widen sidewalks in select areas
- Reduced speed limits between I-95 and Clyde Morris Blvd.
- Addition of raised median islands in Midtown, Downtown and Beachside
- Accessible pedestrian signals throughout corridor
- Enhanced crosswalks and landscaping




*SEGMENT 2 SPEEDWAY  
DR. AT THAMES ROAD*

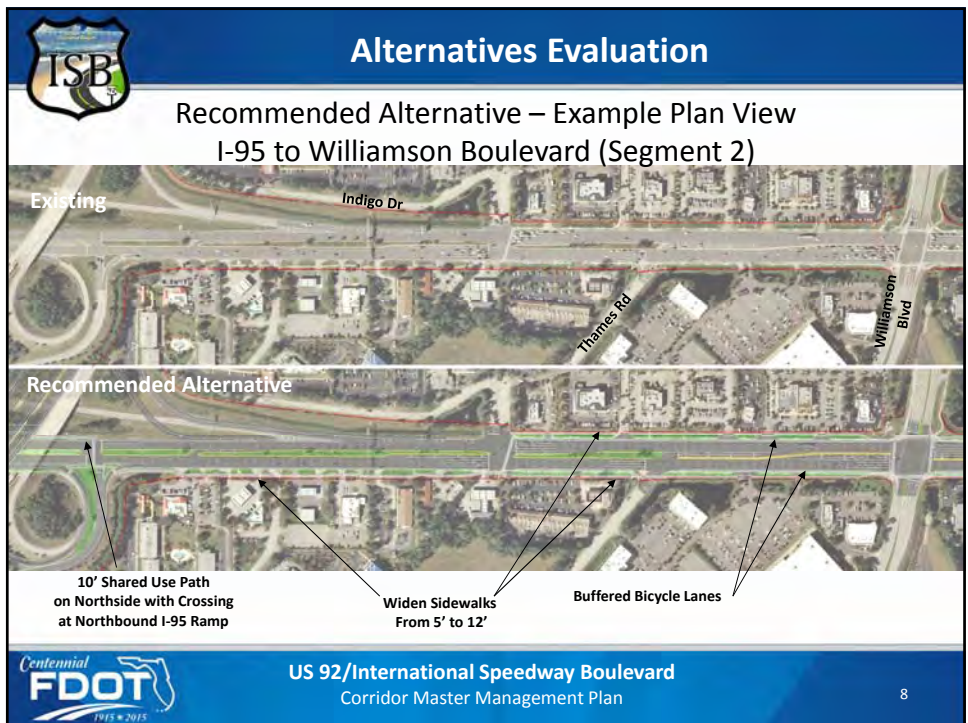
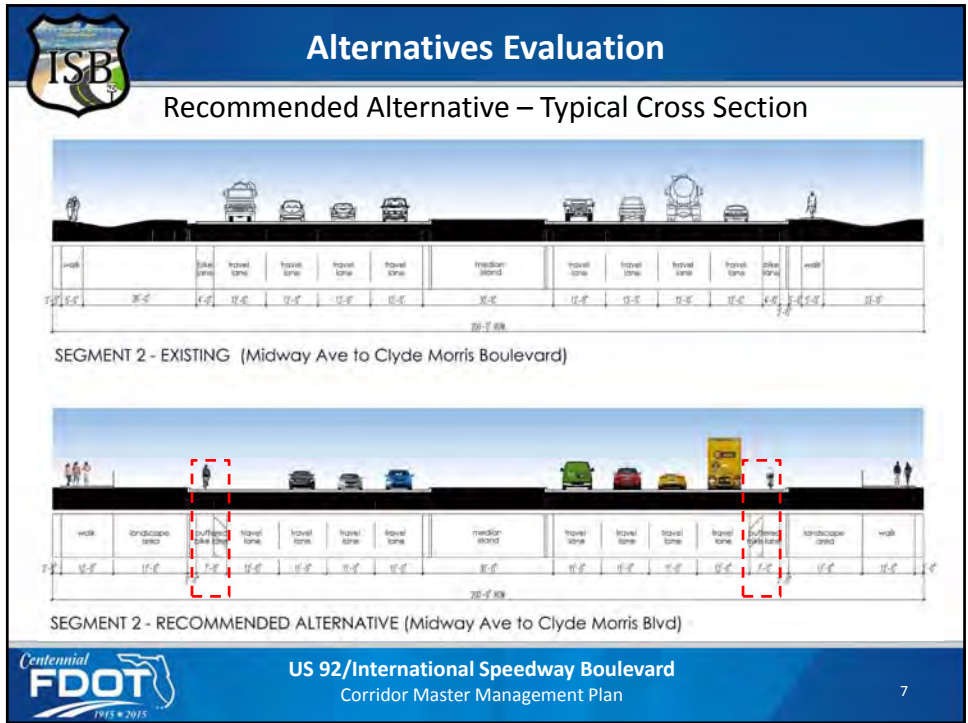


*DR. AT THAMES ROAD - IMPROVED*

*Before and after rendering of ISB at Thames Road*


REVIEW OF FIELD EVALUATION PCT MEETING
6







## Corridor Master Management Plan

### 139 Recommended Improvements

**Key to Color Codes Used in the Tables:**

- Florida Department of Transportation (FDOT)
- City of Daytona Beach (CODB)
- Volusia County's Public Transit System (Votran)
- Private Sector
- ISB CMMP Recommendation

Project Name	FPID Number	City Number
I-4 Widening from SR 44 to I-95	4084641	
US 92 widening from I-4 to Tomoka Farms Road	4226271	2008-007
Adaptive Signal Control	4347121	
I-95 Widening and Systems Interchange Reconstruction Design/Build	2427152	
US 92 Pedestrian Improvements	4348711	2014-035
US 92 Traffic Signal Mast Arms	4348831	
SR 483/Clyde Morris Boulevard Widening Study	4081781	
ISB - West Landscaping	4378571	2015-001
SR 5A/Nova Road Resurfacing	4324383	
US 92/SR 600/ISB Resurfacing	4324421	2013-059
US 92 Phase II Pedestrian Improvements and Landscaping	4044192	2011-027
ISB - West Phase II Streetscape		2014-023
Daytona Beach Wayfinding Program	4373111	2013-017
US 92 Drainage Improvements from Emmet Street to N. Charles Street	4368551	
ISB - East Streetscape		2011-038
Florida Turnpike Interchanges	4302681	
Halifax River Greenway Trail	4355341	
SR 441/Peninsula Drive Resurfacing	4306821	


- 87 - Existing or Programmed
- 52 - ISB CMMP Recommendations

9

## Corridor Master Management Plan

### Example of Recommended Improvements Maps

10



## Corridor Master Management Plan


### Implementation Strategies


Advance study recommendations and identifies priorities based on factors that consider:

- Safety/Operational/Multimodal Needs
- Potential Partners/Funding Options


Timing

- Short-Term (2015 – 2019)
- Mid-Term (2020 – 2025)
- Long-Term (2026 – 2035)





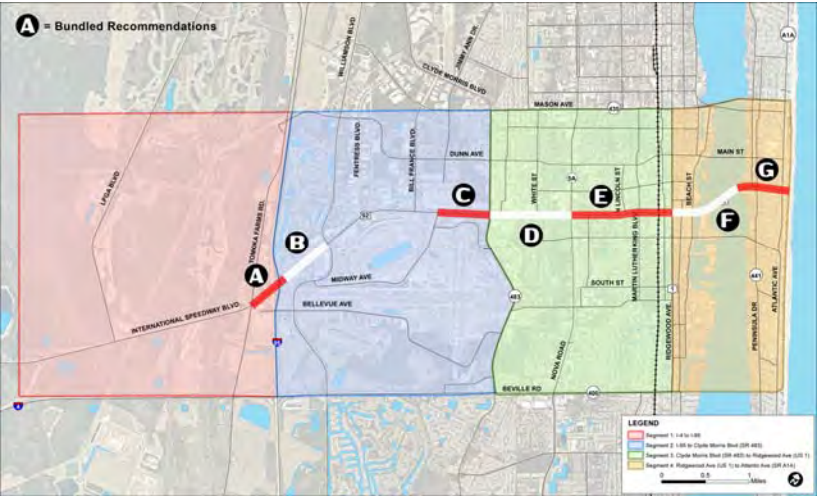
11



## Corridor Master Management Plan


### Implementation Plan - Bundled Recommendations

**A = Bundled Recommendations**



**LEGEND**

- Region 1: 1st to 2nd
- Region 2: 3rd to 4th
- Region 3: 5th to 6th
- Region 4: 7th to 8th
- Region 5: 9th to 10th



12

## What's Next?



- Presentation to River to Sea TPO (October 2015)
- Deliverable: Corridor Master Management Plan (October 2015)
- Project Wrap Up (October 2015)



Before and after rendering of ISB at Grandview Avenue

13



QUESTIONS

River to Sea TPO BPAC Meeting  
October 14, 2015

[www.CFLRoads.com](http://www.CFLRoads.com)

14

SUMMARY SHEET  
BPAC  
OCTOBER 14, 2015

V. Presentations and Discussion Items

C) Presentation on the Walking Revolution

**Background Information:**

*The Walking Revolution* is a documentary about the health benefits of walking, what makes communities walkable and what that means for the environment and the economy. The documentary explores the tremendous changes a regular walking routine can make in your life and community. The following topics are covered:

1. The impact of inactivity
2. Eliminating walking from our culture
3. The evolution of man and walking
4. Walking to better health
5. Building walkable communities

The documentary is produced by the Everybody Walk! Collaborative, a partnership of national, state and local organizations, federal agencies, businesses and professional organizations that are committed to developing and implementing collective approaches that can return walking to a valued, cultural norm for all Americans. *The Walking Revolution* is available online at: <http://www.everybodywalk.org/documentary.html>

***Action Requested:***

***No action is required unless otherwise directed by the BPAC***

SUMMARY SHEET  
BPAC  
OCTOBER 14, 2015

VI. STAFF COMMENTS

- ® International Walk to School Day
- ® US 17 Corridor Improvement Program Study, Phase 2

VII. INFORMATION ITEMS

- ® BPAC Attendance Record
- ® Share the Road Celebration of Cycling Flyer
- ® TPO Board Meeting Report

VIII. BPAC MEMBER COMMENTS

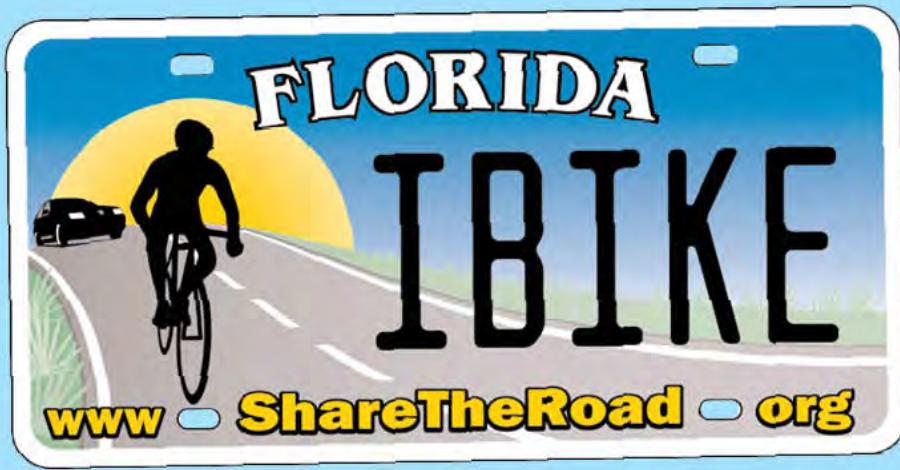
IX. ADJOURNMENT

<b>Name</b>	<b>Jan</b>	<b>Feb</b>	<b>Mar</b>	<b>Apr</b>	<b>May</b>	<b>Jun</b>	<b>July</b>	<b>Aug</b>	<b>Sep</b>	<b>Oct</b>	<b>Nov</b>	<b>Notes</b>
Holly Ryan/Doug Hall	x	exc	C	x	x	x	C	x	x			Daytona Beach (appt. 3/12) (alt. appt. 02/14)
John Schmitz	exc	abs	A	exc	x	exc	A	exc	x			Daytona Beach Shores (appt. 8/12)
Jeff Hodge			N	x	exc	x	N	exc	exc			DeBary (appt. 3/15)
Ted Wendler	exc	x	C	x	x	x	C	x	abs			DeLand (appt. 05/11) (appt. 6/14)
Scott Leisen	abs	x	E	x	x	x	E	x	x			Deltona (appt. 12/12)
Michelle Grenham	x	exc	L	x	x	x	L	exc	exc			Edgewater (appt. 1/08)
Paul Eik	x	x	L	exc	x	x	L	x	x			Flagler Beach (appt. 7/14)
Dustin Savage (Chairman)	x	x	E	x	abs	x	E	x	x			Flagler County (appt 8/15)
Nic Mostert	x	exc	D	x	x	x	D	x	x			New Smyrna Beach (appt. 03/15)
Bob Storke (Vice Chairman)	x	x		x	x	x		x	x			Orange City (appt. 12/07)
Phyllis Campbell	x	x	C	x	x	abs	C	x	x			Ponce Inlet (appt. 11/06)
Colleen Nicoulin	x	x	A	x	x	exc	A	x	x			Port Orange (appt. 7/11)
Bill Pouzar	abs	x	N	x	x	exc	N	x	x			Volusia County (appt. 12/10) D-5 (Lowry)
Roy Walters/Jason Aufdenberg	x	x	C	x	x	x	C	x	x			Volusia County At-Large (appt. 03/05) (alt. appt 07/12)
Patricia Lipovsky/Nancy Burgess-Hall	exc	abs	E	abs	abs	abs	E	abs	abs			Volusia County (app 2/14) D-2 (Wagner)(alt. appt 09/15)
Alice Haldeman	x	x	L	x	x	x	L	x	x			Volusia County (appt. 04/13) D-3 (Denys)
<b><u>NON-VOTING MEMBERS</u></b>												
Ben Hogarth	x	x	L	x	x	exc	L	x	x			Flagler County (appt. 09/15)
Heidi Petito/Bob Owens	abs	abs	E	abs	abs	exc	E	abs	abs			Flagler County Transit (appt 9/14)
Gwen Perney	x	x	D	x	x	x	D	x	x			Large City - Port Orange (appt. 10/13)
John Cotton/Rickey Mack	exc	x		exc	x	x		x	x			Votran (appt. 07/13)
Melissa Winsett/Aaron VanKleeck	exc	x		x	x	x		x	x			Volusia County (02/14) (alt. appt 08/15)
Deborah Tyrone	x	x		x	x	x		x	x			FDOT (appt 12/13)
<b>QUORUM</b>	<b>Y</b>	<b>Y</b>		<b>Y</b>	<b>Y</b>	<b>Y</b>		<b>Y</b>	<b>Y</b>			

<b>Vacancies</b>
Bunnell
Beverly Beach
Flagler County School Board
Holly Hill
Lake Helen
Oak Hill
Ormond Beach
Palm Coast
Pierson
Small City Alliance
South Daytona
Volusia County District 1
Volusia County School Board

January - December 2015





ShareTheRoad.org • Bike Florida • Florida Freewheelers • City of Clermont



**Friday, November 13, 9 am -4 pm  
Forums & Bike-Ped Safety Summit**

Clermont Community Center  
620 W Montrose St, Clermont

**Featured Presenters**



**Sen. Andy Gardiner**  
President, Florida Senate  
SunTrail Paves the Way for  
Major Greenways Expansion

- Eric Trull, Director, Sun Coast Bike Share**  
Is Your City Ready For Bike Share?
- Ian Sikonia, Transportation Planner, City of Orlando**  
Becoming A Bike-Ped Friendly City
- Mighk Wilson, Co-Founder, Savvy Cycling**  
The Take Your Lane Alternative To Bike Lanes
- DeWayne Carver, Statewide Bike-Ped Coordinator**  
A Bike-Friendly App to Find Ridable Roads
- Ian Lockwood, Regional Director, Toole Design Group**  
How Winter Garden Became A Walkable, Bikable City



**Billy Hattaway**  
District 1 Secretary, FDOT  
Florida's Complete Street  
Standards

- Jeffrey Arms, Transportation Section Manager, HDR Edgewater Drive**  
A National Model Complete Street
- Randy Wells, Gainesville City Commissioner**  
A Model Initiative To Protect Pedestrians
- Lacey Nickell, National Ride of Silence**  
Organizing A Safe Ride For A Good Cause
- Tish Kelly, Collier County**  
Lobbying For Safer Cycling
- John Egberts: Florida Traffic Bicycle And Safety Education Program**  
Bike-Ped Safety Education
- Bill Bone Esq**  
Drivers and Cyclists: A Case Study
- Bike-Ped Safety Summit: Focus On Law Enforcement**  
Panelists will discuss how to make Florida a safer state for cyclists and pedestrians.  
*Speakers and topics subject to change*

Registration: \$15    Optional Box Lunch: \$15  
Celebration of Cycling T-shirt: \$12  
AICP CEU Credits Pending

**Friday, November 13, 6-9 pm  
Celebrate Cycling  
Food Trucks, Music, Activities**

Historic Downtown Clermont  
Registration: Free

**Saturday, November 14, 6-9 pm  
Annual Share the Road  
Awards Banquet**

Heritage Hills Ballroom  
3195 Heritage Hills Boulevard, Clermont  
Registration: \$45

Keynote Speaker: TBA  
Join us to honor advocates and organizations that have made a significant contribution to cycling in Florida.

**Sponsors**



**Partners**



**Register at [www.sharetheroad.org](http://www.sharetheroad.org)**



**River to Sea TPO Board  
September 23, 2015  
Meeting Summary**

- Approved the consent agenda including the approval of the August 26, 2015 TPO Board meeting minutes
- Held an open public hearing on the draft 2040 Long Range Transportation Plan (LRTP), at which there were no comments
- Received a presentation on the draft 2040 Long Range Transportation Plan (LRTP)
- Approved Resolution 2015-18 adopting the River to Sea TPO Year 2040 Long Range Transportation Plan (LRTP)
- Approved Resolution 2015-19 amending the FY 2015/16 to 2019/20 Transportation Improvement Program (TIP)
- Received the FDOT report
- Received Executive Director's report including an update on the difficulties that FDOT is experiencing in programming LAP projects
- Received member comment requesting the date of the November TPO Board meeting be reviewed due to its proximity to the Thanksgiving holiday; informed that the Executive Committee would discuss the matter
- Received member comment regarding utility relocation legislation; informed that the TPO's Legislative Issues Subcommittee would be discussing the issue

***The next River to Sea TPO Board meeting will be on Wednesday, October 28, 2015***