



River to Sea BPAC Meeting

October 11, 2023

2:00 p.m.



**BPAC Meeting
October 11, 2023**

I. Call to Order/Roll Call/Determination of Quorum/ Pledge of Allegiance





**BPAC Meeting
October 11, 2023**

II. Public Comment/Participation



BPAC Meeting October 11, 2023

III. ACTION ITEMS

A. REVIEW AND APPROVAL OF THE SEPTEMBER 13, 2023 BPAC MEETING MINUTES



**BPAC Meeting
October 11, 2023**

III. ACTION ITEMS

**B. REVIEW AND APPROVAL TO AMEND THE LIST OF
SHARED-USE NON-MOTORIZED (SUN) TRAIL PROJECTS**

Volusia County Parks, Recreation and Culture Trails in the Florida Wildlife Corridor

October 10, 2023



SUN Trail update

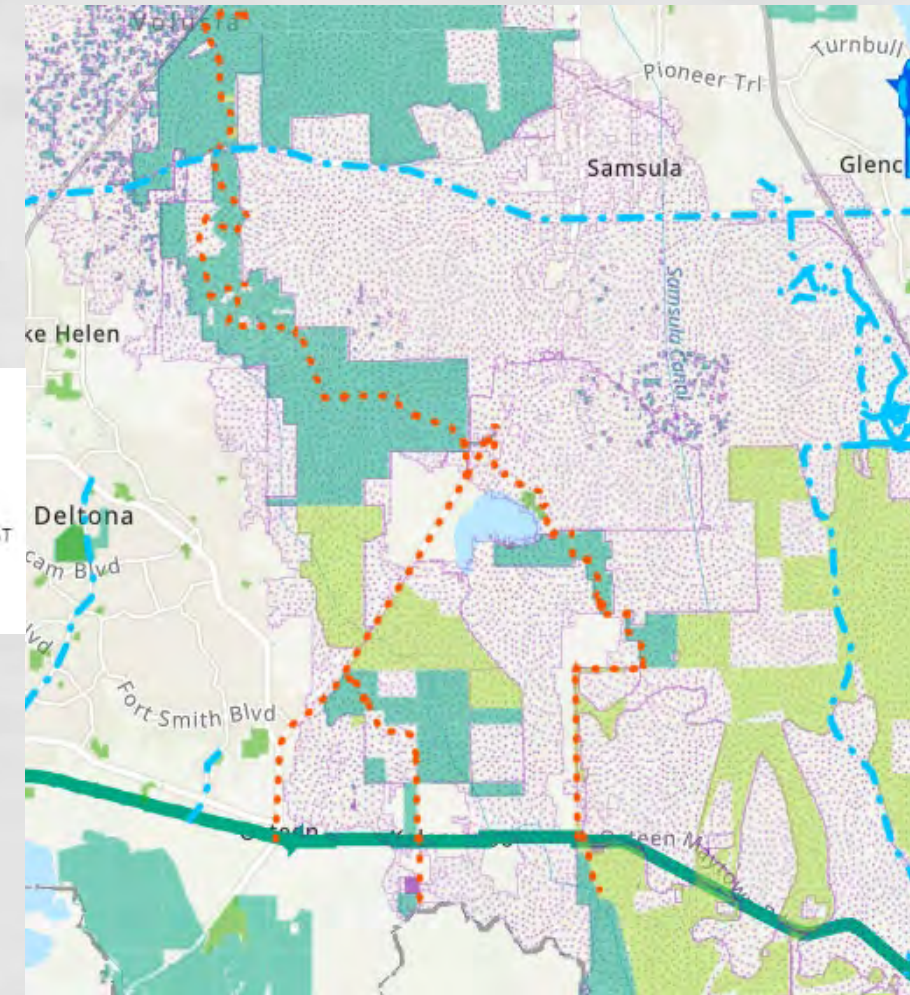
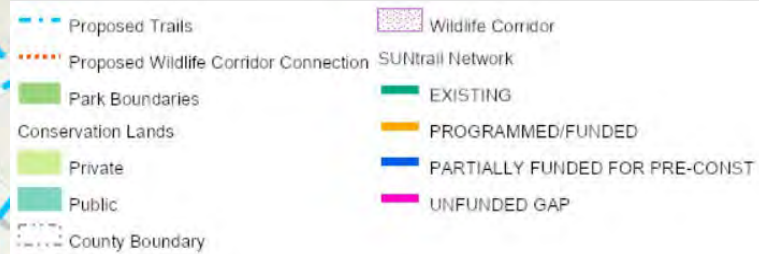
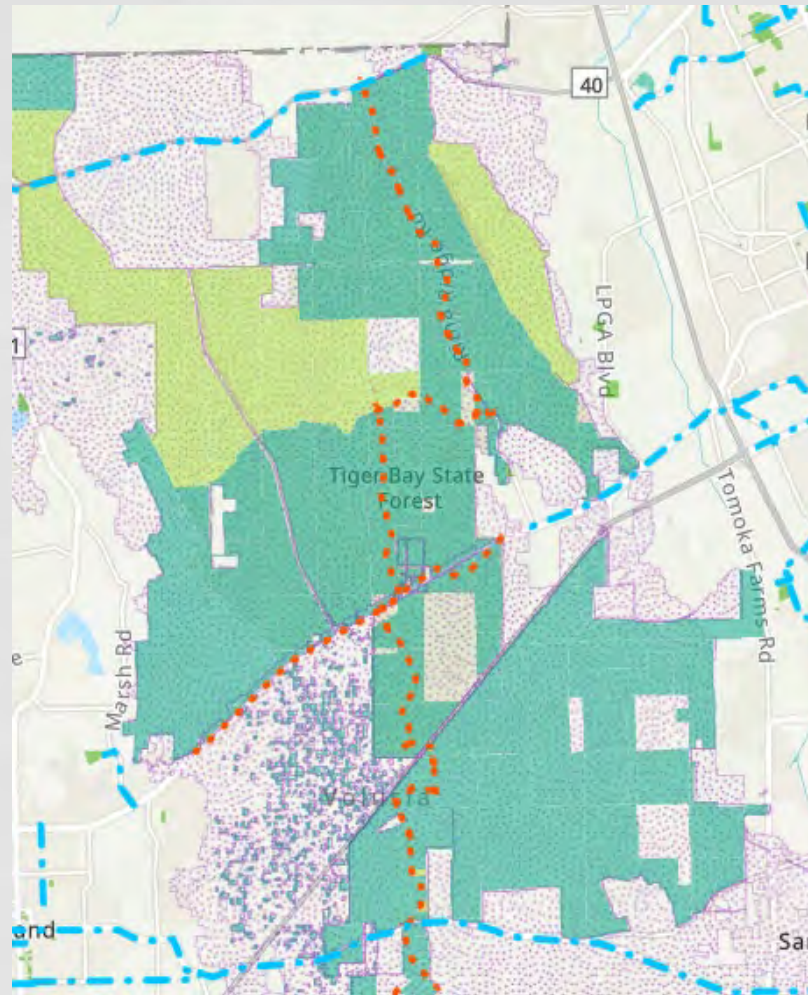
- Senate Bill 106 signed by Governor April 11, 2023
 - Increased SUN Trail funding from \$25 million to \$50 million in recurring revenues. Funding will be available beginning FY23-24
 - Additional \$200 million in non-reoccurring funds allocated to the SUN Trail program for trails in the SUN Trail network
 - Recommendations from TPO and FDOT submitted to FGTC
 - Florida Greenways and Trails Council (FGTC) final approval to be included in SUN Trail network
 - Allows for the development of trails in the Florida Wildlife Corridor
 - Requires DEP to develop criteria for prioritization of regionally significant trails within or connected to the Florida Wildlife Corridor



Chapter 2023 20 – Senate Bill 106

- The multiuse trails or shared-use paths of the state wide network must consist of multi-use trails or shared-use paths physically separated from motor vehicle traffic and constructed with asphalt, concrete, or another hard surface.
- 339.81 Florida Shared-Use Non motorized Trail Network.— (1). The Legislature finds that the investment of the state in the Florida wildlife corridor as defined in s. 259.1055 is of significant interest to the public and that the provision of **paved multiuse trails** within or between areas of the Florida wild life corridor would provide the public the ability to enjoy Florida's natural resources and bring ecotourism and economic opportunities to local trail town communities.

Proposed Wildlife Corridor Connection to the Coast-to-Coast Trail



Articulated Concrete Examples



Questions



**BPAC Meeting
October 11, 2023**

IV. PRESENTATION, STATUS REPORTS, AND DISCUSSION ITEMS
**A. PRESENTATION AND DISCUSSION OF THE LPGA BLVD.
PROJECT DEVELOPMENT AND ENVIRONMENT (PD&E) STUDY
FROM US 92 TO WILLIAMSON BLVD**



**BPAC Meeting
October 11, 2023**

IV. PRESENTATION, STATUS REPORTS, AND DISCUSSION ITEMS
**B. PRESENTATION AND DISCUSSION OF BIKE/WALK CENTRAL
FLORIDA'S BEST FOOT FORWARD PEDESTRIAN SAFETY
PROGRAM**



**BPAC Meeting
October 11, 2023**

IV. PRESENTATION, STATUS REPORTS, AND DISCUSSION ITEMS
C. PRESENTATION AND DISCUSSION OF TPO FY 2022/23
PUBLIC OUTREACH SUMMARY

FY 2022/23

River to Sea TPO

Public Outreach Report

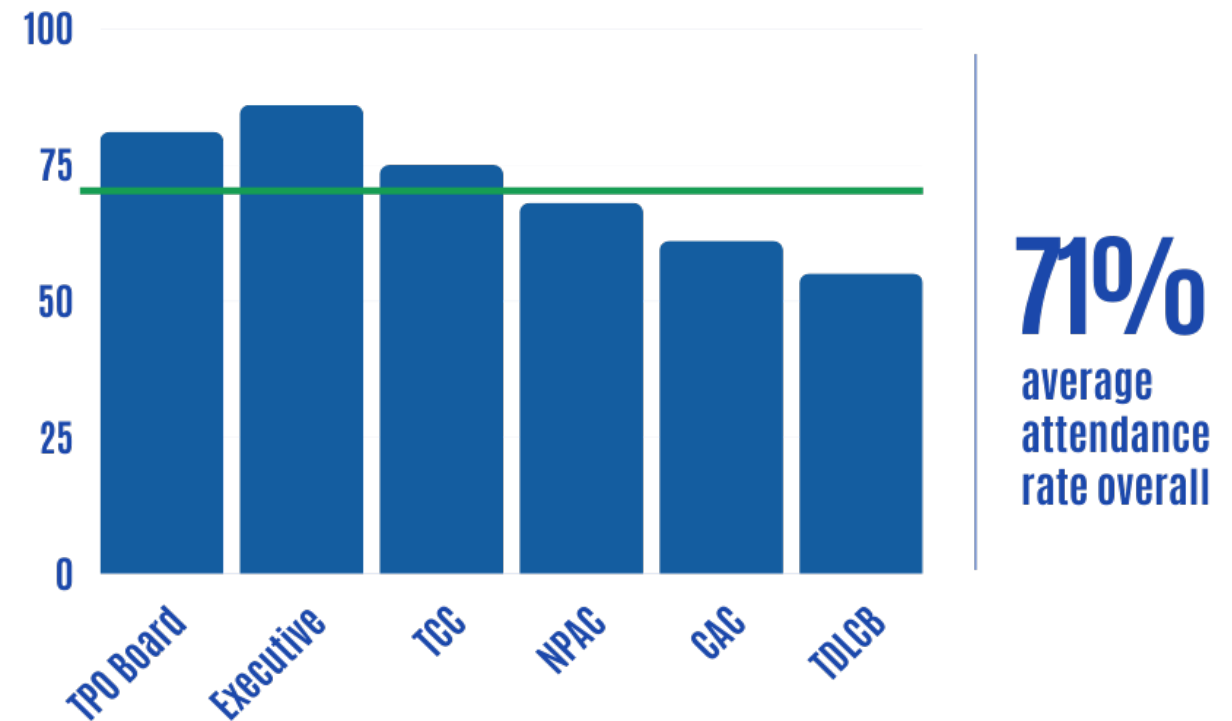


September 2023

Committee/Board Meetings

- ▶ 80% attendance rate goal
 - ▶ Executive Committee: 86%
 - ▶ TPO Board: 81%
 - ▶ TCC: 75%
 - ▶ BPAC: 68%
 - ▶ CAC: 61%
 - ▶ TDLCB: 55%
- ▶ All meetings obtained a quorum

A LOOK AT OUR NUMBERS



ATTENDANCE RATE FOR TPO BOARD AND ADVISORY COMMITTEES



Committee/Board Meetings

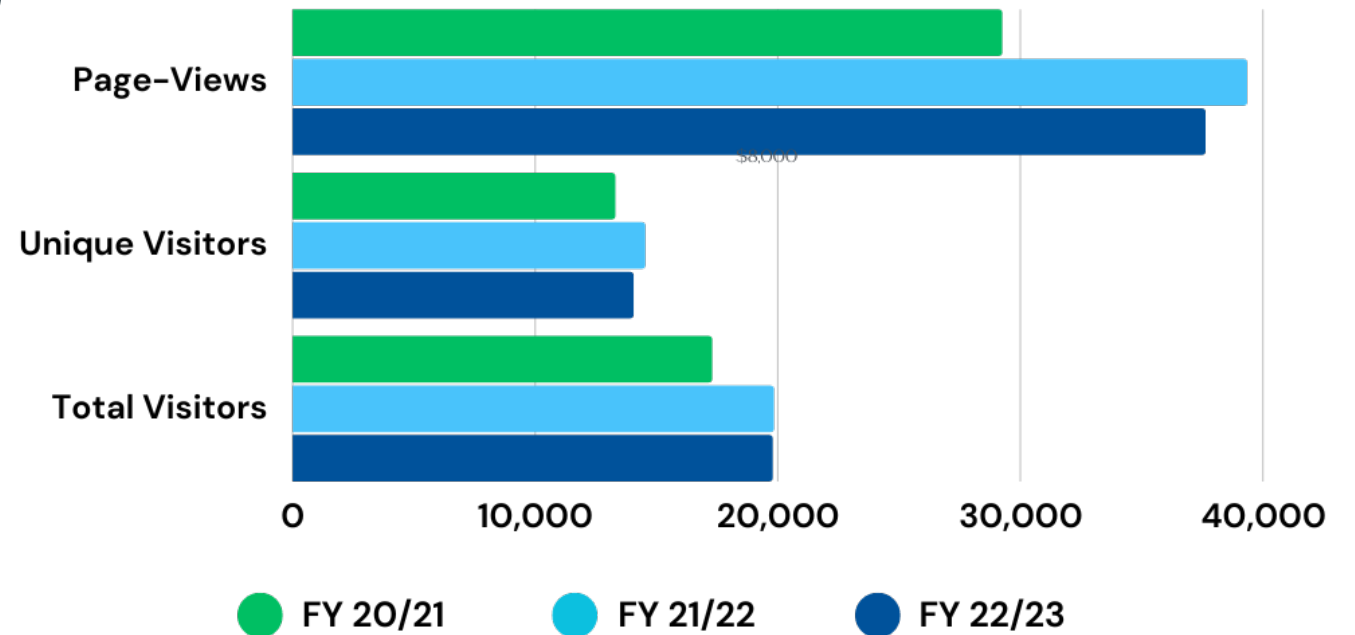
Vacancies

- ▶ TPO Board: 0%
- ▶ Exec Committee: 0%
- ▶ TDLCB: 0%
- ▶ TCC: 22%
- ▶ CAC: 24%
- ▶ BPAC: 25%

TPO Website

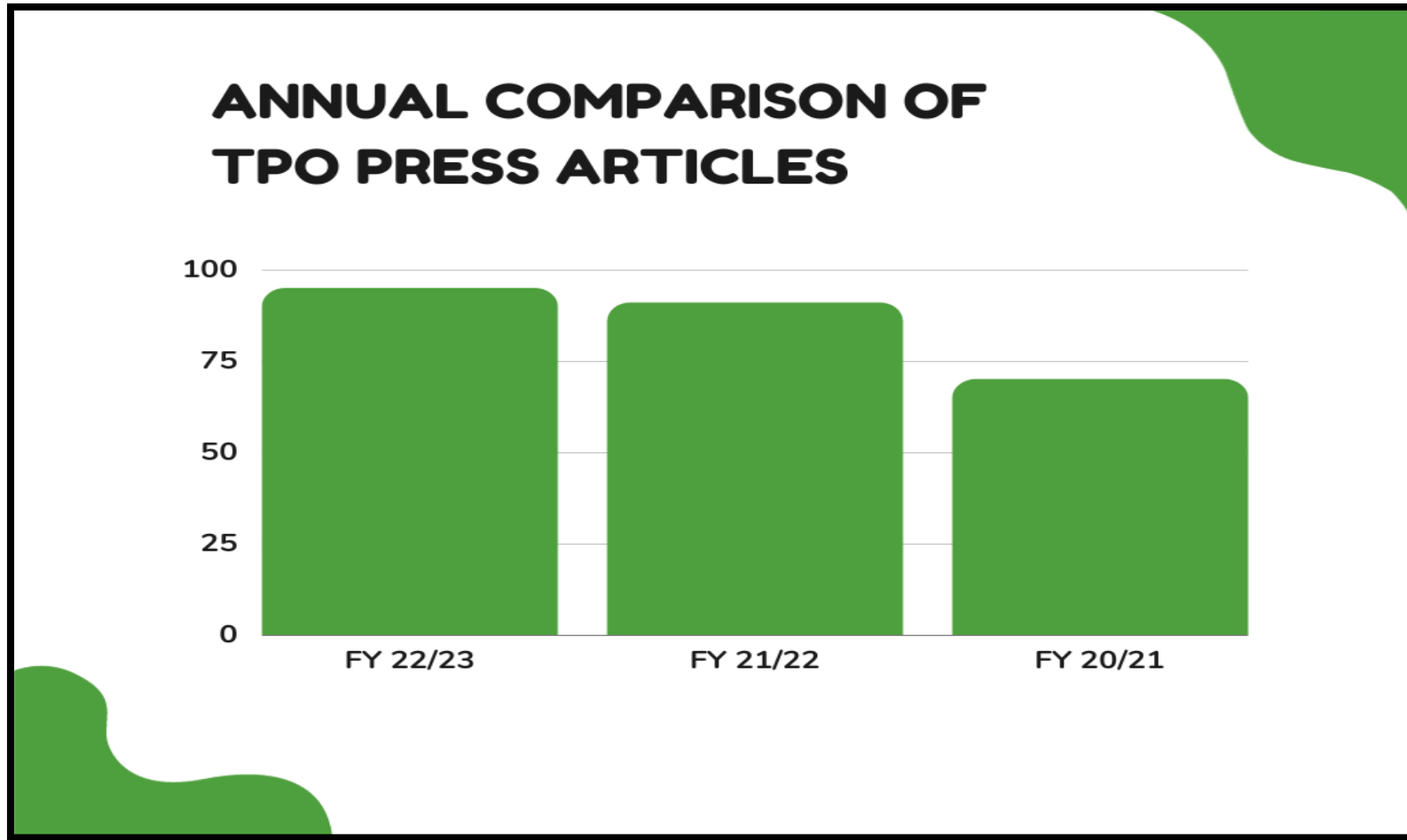
- ▶ www.R2CTPO.org
- ▶ 19,751 visitors
 - ▶ 14,019 new users
- ▶ 37,583 page-views
- ▶ Most visited page: home page
- ▶ 2nd most visited page: Bicycle Suitability Maps (most downloaded item)
- ▶ 3rd most visited page: TPO Staff

Website Statistics Comparison for FY 2020-2023



Media, News Releases, Articles

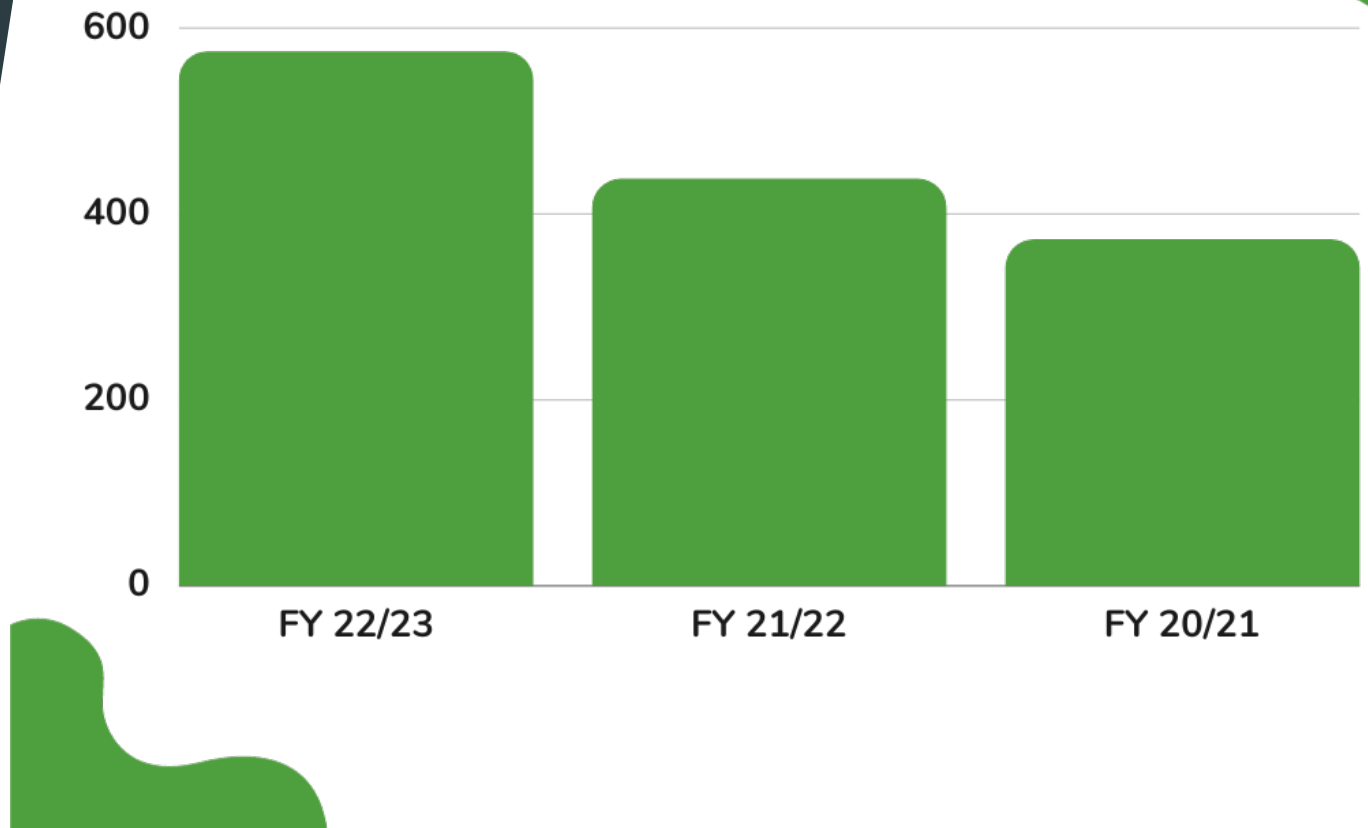
TPO Scrapbook: 95 news articles/media mentions in FY 22/23



Facebook

- ▶ www.Facebook.com/RivertoSeaTPO
- ▶ 574 followers
- ▶ Individual posts reached between 60 to 5,152 people
- ▶ 175 posts reaching 22,182 people

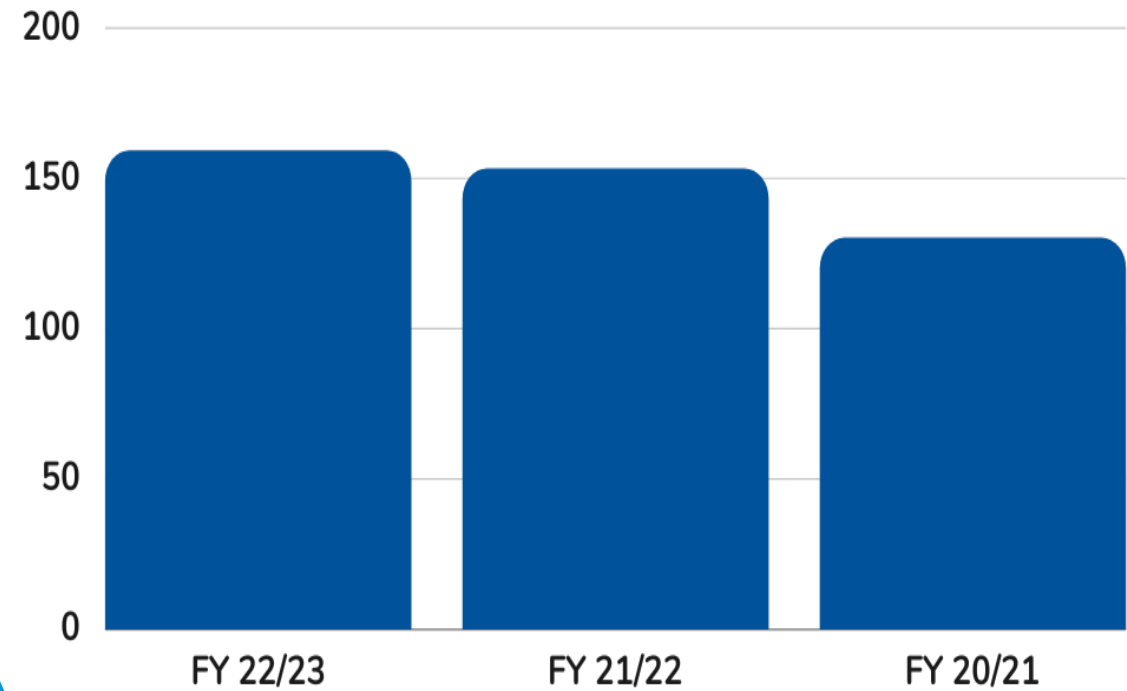
FACEBOOK FOLLOWERS



Twitter

- ▶ www.Twitter.com/TelltheTPO
- ▶ 159 Followers
- ▶ 165 posts resulted in 16,457 impressions

TWITTER FOLLOWERS



Constant Contact Newsletter



- ▶ TPO Transportation Talk
- ▶ Sent to an average of 675 individuals, cities, counties, and organizations
- ▶ Average Open Rate: 32-39% (the number of emails opened vs. the number sent)
 - ▶ Transportation-related industries' average open rate is 26.63%
- ▶ Covers a variety of topics including Florida Bike Month, bicycle/pedestrian safety tips, transportation-related news of interest, and TPO activities

Outreach & Events



Thirty-one (31) Community Outreach Events in FY 22/23 (an increase of 29% over the prior fiscal year)

► **Partnered with FDOT for:**

- **Mobility Week**
- **Love to Ride Challenge**
- **Bicycle Lane Design Contest**
- **National Bicycle Month Kick-Off Press Conference**
- **Bunnell Health Fair**
- **Flagler County Buck Slip**

Flagler County Buck Slip

- ▶ Partnered with FDOT for the design and development of a buck slip
- ▶ In all Flagler County Tax Registration Renewals
- ▶ Over 70,000 mailings over a one-year period





FACT FAIRS

- ▶ Families & Communities Together (FACT)
- ▶ Promote bicycle/pedestrian/driver safety
- ▶ Provide information on Distracted Driving
 - ▶ DeLand High School
 - ▶ Campbell Middle School
 - ▶ Heritage Middle School
 - ▶ New Smyrna Beach High School



TPO Open House & Toy Drive

- ▶ More than 110 toys and gift cards were collected and donated to the Department of Children & Families



ANNUAL TPO HOLIDAY OPEN HOUSE & TOY DRIVE

🎀 WEDNESDAY, DECEMBER 7, 2022 🎀

4:00 P.M. - 6:00 P.M.

Don't forget to bring a new, unwrapped gift for an infant, child, or teen to benefit the Department of Children and Families

LIGHT REFRESHMENTS WILL BE SERVED

RIVER TO SEA TPO CONFERENCE ROOM

2570 W. INTERNATIONAL SPEEDWAY BLVD.
SUITE 100
DAYTONA BEACH, FL 32114

RSVP to
PBLANKENSHIP@R2CTPO.ORG



Port Orange Family Days

- Focused on educating people about bicycle and pedestrian safety
- Fit and donated 267 bicycle helmets



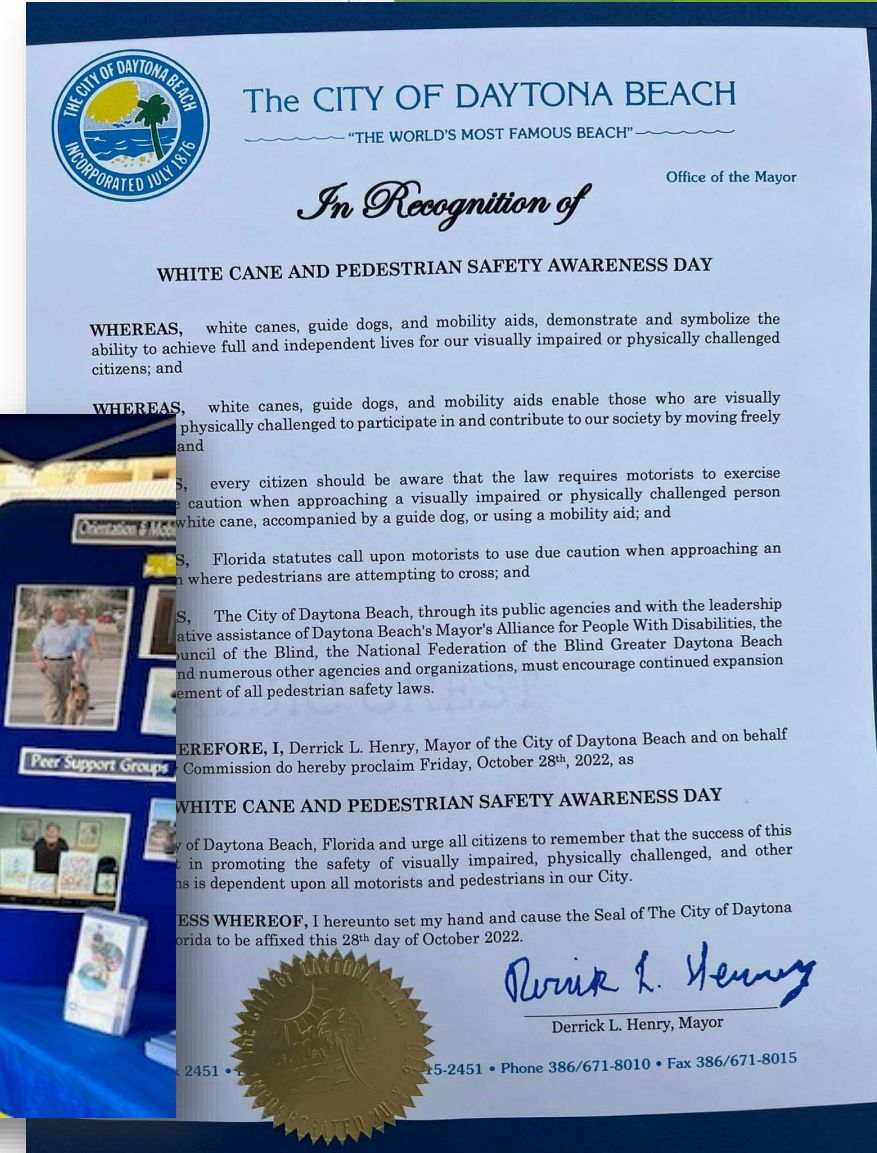
Flagler County Helmet Fittings

- ▶ 21st Century Community Learning Camp (CLCC): 117 helmets
- ▶ Flagler County Summer Camp: 125 helmets
- ▶ Vincent's Clubhouse: 12 helmets



White Cane & Pedestrian Safety Awareness Day

- ▶ Proclamation by the City of Daytona Beach on October 28, 2022
- ▶ TPO staffed a table with safety information
- ▶ Walk blindfolded across an intersection



Health Fairs & Summits

- ▶ Department of Health Family Fun Fair – Deltona – partnered with reThink Your Commute
- ▶ Bunnell Health Fair – partnered with FDOT
- ▶ One Voice Volusia Health & Human Services Summit



What's Next?

- ▶ **Safe Streets and Roads for All Grant – Comprehensive Safety Action Plan Development**
 - ▶ Target Zero
- ▶ **College Pilot Project for Distracted Driving with FDOT**
- ▶ **Partnership with Homeless Shelters – bicycle/pedestrian safety**
- ▶ **Library Partnerships for helmets**
 - ▶ Deltona Library
 - ▶ DeBary Library
 - ▶ John H Dickerson Library
 - ▶ Hope Place Library



Questions?

Pamela Blankenship

TPO Community Outreach Coordinator &
Title VI Coordinator

Pblankenship@r2ctpo.org

386.226.0422 ext. 20416



**BPAC Meeting
October 11, 2023**

IV. PRESENTATION, STATUS REPORTS, AND DISCUSSION ITEMS
**D. PRESENTATION AND DISCUSSION OF THE RIVER TO SEA
TPO'S GUIDING RESOLUTIONS AND PROJECT APPLICATIONS
FOR THE CALL FOR PROJECTS**

R2CTPO Transportation Priority Process

- 3 TPO resolutions provide guidance
 - Delineates local match and project cost increases (Resolution 2022-23)
 - Establishes project categories and ranking (Resolution 2022-24)
 - Allocates TPO Set-aside funding (SU) (Resolution 2022-22)
- 3 project applications allow for annual submission of new projects
 - Traffic Operations (safety, technology)
 - Bicycle & Pedestrian (sidewalks & trails)
 - Planning Studies



2024 Application for Project Prioritization

General Instructions for Bicycle/Pedestrian Project Applications

December 2023

General Instructions:

For the 2024 Call for Projects, the R2CTPO is accepting applications for Feasibility Studies and Project Implementation.

Feasibility studies assess the engineering and planning characteristics of bicycle/pedestrian projects. Feasibility studies must include, but not be limited to, the determination of available right-of-way, documentation and identification of the solutions of obstacles that may impede the project's constructability, permitting and socioeconomic constraints, landscaping, drainage and an engineer's estimate of related planning, design, right-of-way and construction costs.

The R2CTPO has two different application forms for Bicycle/Pedestrian Projects. One is to be used when applying for a Feasibility Study; the other is to be used when applying for Project Implementation. For a given project, applications for Feasibility Study and Project Implementation must be submitted in separate application cycles.

When applying for Project Implementation, the applying agency will also be required to submit a completed copy of FDOT's Project Information Application Form. No project will advance beyond a Feasibility Study unless the R2CTPO receives an application for prioritization of the Project Implementation phase. Applications for prioritization of the Project Implementation phase will be accepted only if a Feasibility Study has already been completed or if the project does not require a Feasibility Study. The applying agency is required to use the minimum threshold programming amount of \$250,000 for design (phase 38), right-of-way (phase 48), and construction (phase 58). There is no minimum threshold programming amount for construction engineering inspection (CEI). **If the minimum threshold programming amount is not met for any project phase, the applying agency MUST submit an exception request with the project application. The exception request MUST contain the following information:**

- **What exception is being requested?**
- **Who is requesting the exception?**
- **Why is the exception being requested?**
- **How will the project proceed if the exception is not granted?**

Applications will be ranked based on the information supplied in the application. The TPO is not obliged to consider information pertaining to the project request that is not included in the project application. However, applying agencies are encouraged to be present for the evaluation of their applications to provide clarification, if needed. Mixed projects (defined as a project that is not a stand-alone bicycle/pedestrian project) require separate applications for the bicycle/pedestrian category and traffic operations/safety category. Updated cost

estimates for projects on the bicycle/pedestrian list of prioritized projects are to be submitted with a letter of continuing support by February 29, 2024. After the List of Prioritized Projects is adopted by the R2CTPO Board in June, if a project is withdrawn by the sponsor, an official letter of withdrawal and/or email must be submitted to the R2CTPO within thirty (30) days.

Incomplete applications will not be accepted

INCOMPLETE APPLICATIONS WILL NOT BE ACCEPTED!

Eligible Project Sponsors for the 2024 Call for Projects.

- Local governments;
- Transit agencies;
- School districts or educational institutions;
- Any other local or regional governmental entity with responsibility for oversight of transportation or recreational trails (other than a metropolitan planning organization or a State agency) that the State determines to be eligible.

Eligible activities related to surface transportation that can be funded with **Transportation Alternatives funds**¹:

- Construction, planning, and design of on-road and off-road trail facilities for pedestrians, bicyclists, and other non-motorized forms of transportation, including sidewalks, bicycle infrastructure, pedestrian and bicycle signals, traffic calming techniques, lighting, signage, and other safety-related infrastructure, and transportation projects to achieve compliance with the Americans with Disabilities Act of 1990.
- Construction, planning, and design of infrastructure-related projects and systems that will provide safe routes for non-drivers, including children, older adults, and individuals with disabilities to access daily needs.
- Construction, planning, and design of infrastructure-related projects on any public road or any bicycle or pedestrian pathway or trail in the vicinity of schools that will substantially improve the ability of students to walk and bicycle to school, including sidewalk improvements, traffic calming and speed reduction improvements, pedestrian and bicycle crossing improvements, on-street bicycle facilities, off-street bicycle and pedestrian facilities, secure bicycle parking facilities, and traffic diversion improvements.

All construction and pre-construction work phases will be administered by the Florida Department of Transportation (FDOT) or other Local Agency Program (LAP) certified local government. Reimbursements are distributed only to a LAP certified agency responsible for completing the tasks. FDOT assigns a LAP Design and LAP Construction Liaison for each project. Federal law requires that each project be administered under the rules

¹ It is the River to Sea TPO's intent to extend eligibility to all of the activities included within the meaning of the term "Transportation Alternatives" pursuant to 23 U.S.C. 101(a)(29) except the following:

1. Construction of turnouts, overlooks, and viewing areas;
2. Community improvement activities, including –
 - a. inventory, control, or removal of outdoor advertising;
 - b. **historic** preservation and rehabilitation of historic transportation facilities;
 - c. vegetation management practices in transportation rights-of-way to improve roadway safety, prevent against invasive species, and provide erosion control; and
 - d. archaeological activities related to impacts from implementation of a transportation project eligible under title 23;
3. Any environmental mitigation activity, including pollution prevention and pollution abatement activities and mitigation to –
 - a. address stormwater management, control, and water pollution prevention or abatement related to highway construction or due to highway runoff, including activities described in sections 133(b)(11), 328(a), and 329 of title 23; or
 - b. reduce vehicle-caused wildlife mortality or to restore and maintain connectivity among terrestrial or aquatic habitats
4. Safe Routes to School coordinator
5. Planning, designing, or construction boulevards and other roadways largely in the right-of-way of former Interstate System routes or other divided highways.

and procedures governing federally funded transportation projects. Certified Local Agencies comply with all applicable Federal statutes, rules and regulations.

Initial Project Screening:

Any project submitted by a local government for consideration needs to meet the following screening criteria:

For any proposed facility to be considered eligible through the TPO process, the project must be included on the ***River to Sea TPO's Bicycle and Pedestrian Plan*** <https://www.r2ctpo.org/planning-studies/bicycle-pedestrian/draft-bicycle-pedestrian-plan/> or a local government adopted ***Bicycle/Pedestrian Plan*** or the ***River to Sea TPO's Bicycle Suitability Map 2019***.

Is this **Shared Use Path** project at least 12 feet wide?

- If **Yes** – the project is eligible.
- If **No** – justification is required to determine eligibility.

Is this **Sidewalk** project at least 5 feet wide?

- If **Yes** – the project is eligible.
- If **No** – the project application is not acceptable.

Is this an activity that can be funded with **Transportation Alternatives Funds**?

- If **Yes** – the project is eligible.
- If **No** – the project application is not acceptable.

Local Match Requirement:

R2CTPO Resolution 2023-## provides that the governmental entity requesting state and/or federal transportation funds shall be required to match those funds programmed on the project with local funds at the ratio of 10% local funds to 90% state and/or federal funds. This match requirement shall not apply to projects on the State Highway System. The match shall be by project phase for each programmed phase including feasibility study. A non-federal cash match is required for a feasibility study. For all other phases, the local match is defined as non-federal cash match and/or in-kind services that advance the project. This resolution also reaffirms the R2CTPO's policy that the applying agency (project originator) shall be responsible for any cost overruns encountered on a project funded with state and/or federal transportation funds unless the project is on the state highway system, in which case, the State DOT shall be responsible for any cost overruns.

Other Funding Requirements:

All project applications are subject to approval by the R2CTPO Board. Other funds (in addition to SU funds) may be used to fund project phases or overall costs.

Electronic and "Hard Copy" Submittal Requirements:

Any project submitted by a local government for consideration **MUST** include the following information/materials:

1. Applications and supporting documentation shall be submitted as digital media in Portable Document Format (PDF).

Electronic documents must be submitted through the R2CTPO FTP site:

<https://www3.mydocsonline.com/customerupload/2792171eab9bca9a833495865c00>

2. The application and all supporting documentation shall be included in one electronic PDF file.
3. All document pages shall be oriented so that the top of the page is always at the top of the computer monitor.
4. Page size shall be either 8-1/2" by 11" (letter) or 11" by 17" (tabloid).
5. PDF documents produced by scanning paper documents are inherently inferior to those produced directly from an electronic source. Documents which are only available in paper format should be scanned at a resolution which ensures the pages are legible on both a computer screen and a printed page. We recommend scanning at 300 dpi to balance legibility and file size. If you are unable to produce an electronic document as prescribed here, please contact R2CTPO staff to discuss other options. If you are unable to upload to the R2CTPO FTP site, please contact R2CTPO staff to discuss other options.
6. In addition to the digital submittal, we require one (1) complete paper copy of the application and all supporting documents. This must be identical to the digital submittal.
7. Submit any available right-of-way information.
8. **Each application MUST include a Project Map** that clearly identifies the termini of the project, Proximity to Community Assets and Network Connectivity through the use of a one (1) mile radius buffer for Shared Use Path projects and **Transportation Alternatives Activities** and a one-half (½) mile radius buffer for Sidewalk projects. Maximum map size is 11" x 17".
9. In addition, all maps MUST include a **Scale** (in subdivisions of a mile), **North Arrow**, **Title** and **Legend**. Photographs are encouraged and must be captioned.

Projects that contribute directly to the completion or enhancement of the following trail systems may be eligible for inclusion as Regional Trail Projects:

1. SunTrail Network
2. Priority and Opportunity Land Trails of the Florida Greenways and Trails System (FGTS) Plan

Will this proposed project contribute directly to the completion or enhancement of any of the aforementioned regional trail systems? Yes ☐ No ☐

R2CTPO staff will provide assistance in completing an application at the request of any member local government.

Bicycle/Pedestrian Links

- **2019 Bicycle Suitability Map:** <https://www.r2ctpo.org/planning-studies/bicycle-pedestrian/maps/>
- [Bike Florida, Inc.](#)
- [Bike Safety Guide](#)
- [Bike/Walk Central Florida](#)
- [Biking West Volusia](#)
- [Central Florida Community Traffic Safety Teams](#)
- [Central Florida Safe Routes Portal](#)
- [Central Florida Scenic Byway Brochure](#)
- [Coast to Coast Trail](#)
- [Commute Orlando](#)
- [Commuting by Bike: Safety Guide & Tips](#)
- [Cycling Savvy](#)
- [D5 TransPed Pedestrian and Bicycle Planning Tool](#)
- [East Coast Greenway](#)
- [Flagler County Parks and Recreation](#)
- [Florida East Coast Greenway](#)
- [Florida Bicycle Association](#)
- [Florida Bicycle Law](#)
- [Florida DEP Office of Greenways and Trails](#)
- [Florida DOT Alert Today, Alive Tomorrow](#)
- [Florida DOT Pedestrian and Bicycle Program](#)
- [Florida DOT Bicycle/Pedestrian Non-Motorized Database System \(Traffic Counts\)](#)
- [Florida DOT Non-Motorized Traffic Monitoring Program](#)
- [Florida DOT Safe Routes to School](#)
- [Florida Greenways and Trails Foundation](#)
- [Florida Pedestrian/Bicycling Safety Resource Center](#)
- [Florida Safe Routes to School](#)
- [Florida Scenic Highways Program](#)
- [Florida Traffic Safety Dashboard/Signal Four Analytics](#)
- [Florida Urban and Community Forestry Grant Program](#)
- [National Center for Safe Routes to School](#)
- [Palm Coast Trail Map & Park Guide](#)
- [Pedestrian and Bicycle Information Center](#)
- [Safe Routes to School National Partnership](#)
- [Safe Routes to School Online Guide](#)
- [St. Johns River to Sea Loop Alliance](#)
- [SUN Trail Network](#)
- [East Central Regional Rail Trail](#)
- [USDOT/FHWA Pedestrian & Bicycle Safety](#)
- [Visit Florida – Florida Trails & Greenways](#)
- [Volusia County Trails Program](#)
- [SRTS Resources List](#)
- [NTSB 2020 Bicycle Safety Research Report](#)



2024 Application for Project Prioritization – **PROJECT IMPLEMENTATION**

Bicycle/Pedestrian Projects

All applications must be uploaded to the TPO file transfer site by 4:00 p.m. (EST) on February 29, 2024

[Click This Link to Upload Your Completed Application to the River to Sea TPO](#)

Project Title: _____

Applying Agencies (project sponsor): _____ Date: _____

[Attach a copy of the completed Feasibility Study, or explain in the space provided below for commentary why a Feasibility Study is not attached.]

Commentary: _____

Attach a completed copy of FDOT's Project Information Application Form.

Criteria Summary:

Priority Criteria	Points
(1) Proximity to Community Assets	20
(2) Connectivity and Accessibility <u>and</u> <u>Equitability</u>	20 <u>15</u>
(3) Safety/Security	20
(4) Contribution to Livability <u>and Sustainability</u> <u>in the Community</u>	10 <u>6</u>
(5) <u>Cont. to Wildlife and Envrionmental Sust.</u>	<u>11</u>
(5) <u>6</u> Enhancements to the Transportation System	10 <u>9</u>
(6) <u>7</u> Project Readiness	5
(7) <u>8</u> Public Support/Special Considerations	5
(8) <u>9</u> Local Matching Funds > 10%	20
(9) <u>10</u> Value-Added Tie Breaker (if necessary)	variable
Total (excluding Value-Added Tie Breaker)	110 <u>111</u>

Criterion #1 – Proximity to Community Assets (20 points maximum)

This measure will estimate the potential demand of bicyclists and pedestrians based on the number of productions or attractions the facility may serve within a one (1) mile radius for Shared Use Paths and **Transportation Alternatives Activities** or a one-half (½) mile radius for Sidewalks. A maximum of 20 points will be assessed overall, and individual point assignments will be limited as listed below.

List and describe how the facilities link directly to community assets and who is being served by the facility. Show each of the Community Assets on a Project Area Map through the use of a buffer and describe in the space provided.

Proximity to Community Assets	Check All that Apply	Max. Points
Residential developments, apartments, community housing	<input type="checkbox"/>	4
Activity centers, town centers, office parks, post office, city hall/government buildings, shopping plaza, malls, retail centers, trade/vocational schools, colleges, universities	<input type="checkbox"/>	4
Parks, trail facilities, recreational facilities	<input type="checkbox"/>	4
Medical/health facilities, nursing homes, assisted living, rehabilitation center	<input type="checkbox"/>	4
School bus stop (K-12)	<input type="checkbox"/>	2
Schools (K-12)	<input type="checkbox"/>	2
Maximum Points Awarded		20

Criterion #1 Description (required): _____

Criterion #2 – Connectivity and Accessibility and Equitability (20 points maximum)

This measure considers the gaps that exist in the current network of bike lanes, bike paths and sidewalks. The measurement will assess points based on the ability of the proposed project to join disconnected networks or complete fragmented facilities. Does the project enhance mobility or accessibility for disadvantaged groups, including children, the elderly, the poor, those with limited transportation options and the disabled? Does the project enhance mobility, accessibility, and equitability?

List and describe how this project fits into the local and regional bicycle/pedestrian networks and/or a transit facility. Depict this on the map and describe in the space provided.

Network Connectivity and Accessibility	Check All that Apply	Max. Points
Project provides equitable access to a transit facility	<input type="checkbox"/>	5
Project extends an existing bicycle/pedestrian facility (at one end of the facility)	<input type="checkbox"/>	5
Project provides a connection between two existing or planned/programmed bicycle/pedestrian facilities	<input type="checkbox"/>	5
Project has been identified as “needed” in an adopted document (e.g., comprehensive plan, master plan, arterial study)	<input type="checkbox"/>	5
Maximum Points Awarded		20

Criterion #2 Description (required): _____

Criterion #3 – Safety/Security (20 points maximum)

This measure provides additional weight to applications that have included safety as a component of the overall project, increase the comfort level of bicyclists and pedestrians, and includes school locations identified as hazardous walking/biking zones and areas with significant numbers of safety concerns.

List and describe whether the proposed facility is located within a “hazardous walk/bike zone” in the River to Sea TPO planning area and provide documentation that illustrates how bicycle or pedestrian safety could be enhanced by the construction of this facility.

For more information, contact Volusia or Flagler County School District Student Transportation Services and refer to Florida Statute 1006.23.

Safety/Security	Check All that Apply	Max. Points
The project is located in an area identified as a hazardous walk/bike zone by Volusia or Flagler County School District Student Transportation Services and within the River to Sea TPO planning area. If applicable, provide documentation.	<input type="checkbox"/>	10
The project removes or reduces potential conflicts (bike/auto, bike/ped, and ped/auto). There is a pattern of bike/ped crashes along the project route. The project eliminates or abates a hazardous, unsafe, or security condition in a school walk zone as documented in a school safety study or other relevant study. The project helps the River to Sea TPO meet or exceed adopted Transportation Safety Targets for Non-Motorized Serious Injuries and Fatalities. If applicable, provide documentation such as photos or video of current situation/site or any supportive statistics or studies.	<input type="checkbox"/>	10
Maximum Points Awarded		20

Criterion #3 Description (required): _____

Criterion #4 Contribution to Livability and Sustainability in the Community (10 6 points maximum)

This measure considers how the project positively impacts the Livability and Sustainability in the community that is being served by that facility. ~~Depict assets on a project area map and~~ Describe in the space provided.

Contribution to Livability and Sustainability in the Community (Maximum 10 Points)	Check All that Apply	Max. Points
Project includes traffic calming measures	<input type="checkbox"/>	1
Project protect wildlife and is sensitive to the natural ecosystem	<input type="checkbox"/>	1
Project removes barriers and/or bottlenecks for bicycle and/or pedestrian movements	<input type="checkbox"/>	1
Project includes features which improve the comfort, safety, security, enjoyment or well-being for bicyclists, pedestrians, and/or transit users	<input type="checkbox"/>	1
Project improves transfer between transportation modes	<input type="checkbox"/>	1
Project supports infill and redevelopment consistent with transit-oriented design principles	<input type="checkbox"/>	1
Project supports a comprehensive travel demand management strategy	<input type="checkbox"/>	1
Project significantly enhances the travel experience via walking and biking	<input type="checkbox"/>	1
Project improves transportation system resiliency and reliability	<input type="checkbox"/>	1
Project reduces or mitigates the storm water impacts of surface transportation	<input type="checkbox"/>	1

Maximum Points Awarded		10 6
-------------------------------	--	-------------

Criterion #4 Description (required): _____

Criterion #5 – Contribution to Wildlife and Environmental Sustainability (11 points maximum)

This measure considers how the project positively impacts wildlife and environmental sustainability in the community.

Describe in the space provided.

Contribution to Wildlife and Environmental Sustainability	Check All that Apply	Max. Points
The project protects wildlife and their habitat.	<input type="checkbox"/>	6
The project supports infill development and redevelopment and is sensitive to the natural ecosystem.	<input type="checkbox"/>	5
Maximum Points Awarded		11

Criterion #5 Description (required): _____

Criterion #5.6 Enhancements to the Transportation System (10 points maximum)

This measure considers the demonstrated and defensible relationship to surface transportation.

Describe how this project fits into the local and regional transportation system. Depict this on the map where applicable and describe in the space provided.

Enhancements to the Transportation System (Maximum 10 Points)	Check All that Apply	Max. Points
Is the project included in an adopted plan?	<input type="checkbox"/>	1
Is the project consistent with the goals of the River to Sea TPO's Complete Streets Policy on Page 5?	<input type="checkbox"/>	1
Does local government have Land Development Code requirements to construct sidewalks?	<input type="checkbox"/>	1
Does the project relate to surface transportation?	<input type="checkbox"/>	1
Does the project improve mobility between two or more different land use types located within ½ mile of each other, including residential and employment, retail or recreational areas?	<input type="checkbox"/>	1
Does the project benefit transit riders by improving connectivity to existing or programmed pathways or transit facilities?	<input type="checkbox"/>	1
Does the project conform to Transit Oriented Development principles?	<input type="checkbox"/>	1
Does the project sponsor have a Complete Streets Policy?	<input type="checkbox"/>	1
Is the project an extension or phased part of a larger redevelopment effort in the corridor/area?	<input type="checkbox"/>	1
Project is located in a "gateway" or entrance corridor as identified in a local government applicant's master plan, or other approved planning document.	<input type="checkbox"/>	1

Maximum Points Awarded		10 9
-------------------------------	--	-------------

Criterion #5 6 Description (required): _____

Criterion #6 7 Project “Readiness” (5 Points maximum)

This measure considers the state of project readiness. Describe project readiness in the space provided.

Project Readiness (Maximum 5 Points)	Check All that Apply	Max. Points
Is there an agreement and strategy for maintenance once the project is completed, identifying the responsible party?	<input type="checkbox"/>	2
Is the project completed through the design phase?	<input type="checkbox"/>	1
Is right-of-way readily available and documented for the project?	<input type="checkbox"/>	2
Maximum Points Awarded		5

Criterion #6 7 Description (required): _____

Criterion #7 8 Public Support/Special Considerations (5 points maximum)

Describe whether the proposed facility has public support and provide documentation (e.g., letters of support/signed petitions/public comments from community groups, homeowners associations, school administrators). Describe any special issues or concerns that are not being addressed by the other criteria.

Special Considerations	Check All that Apply	Max. Points
Is documented public support provided for the project? Are there any special issues or concerns?	<input type="checkbox"/>	5
Maximum Points Awarded		5

Criterion #7 8 Description (required): _____

Criterion #8 9 Local Matching Funds > 10% of Total Project Cost (20 points maximum)

If local matching funds greater than 10% of the estimated project cost are available, describe the local matching fund package in detail.

	Check One	Max. Points
Is the Applicant committing to a local match greater than 10% of the estimated total project cost?	<input type="checkbox"/> Yes <input type="checkbox"/> No	
10.0% < Local Matching Funds < 12.5%	<input type="checkbox"/>	2
12.5% ≤ Local Matching Funds < 15.0%	<input type="checkbox"/>	4
15.0% ≤ Local Matching Funds < 17.5%	<input type="checkbox"/>	6
17.5% ≤ Local Matching Funds < 20.0%	<input type="checkbox"/>	8
20.0% ≤ Local Matching Funds < 22.5%	<input type="checkbox"/>	10
22.5% ≤ Local Matching Funds < 25.0%	<input type="checkbox"/>	12
25.0% ≤ Local Matching Funds < 27.5%	<input type="checkbox"/>	14
27.5% ≤ Local Matching Funds < 30.0%	<input type="checkbox"/>	16
30.0% ≤ Local Matching Funds < 32.5%	<input type="checkbox"/>	18
32.5% ≤ Local Matching Funds	<input type="checkbox"/>	20
Maximum Points Awarded		20

Criterion #8 9 Description (required): _____

Criterion #9 10 Value-Added Tie Breaker (if necessary) (variable points)

Projects with equal scores after evaluations using the eight Project Proposal Criteria are subject to the Value-Added Tie Breaker. The BPAC and Project Review Subcommittee are authorized to award tie breaker points based on the additional value added by the project. A written explanation of the circumstances and amount of tie breaker points awarded for each project will be provided.

River to Sea TPO Complete Streets Policy Goals

- Reduce injuries and fatalities
- Provide transportation options for people of all ages, physical abilities, and income levels
- Improve health by promoting active lifestyles through design to realize long-term health impacts
- Support equitable access to employment opportunities and civic resources
- Support economically healthy/vibrant communities
- Implement resilient and sustainable solutions



2024 Priority Process for Bicycle/Pedestrian and B/P Local initiatives Projects

Feasibility Studies

1. Local government submits project(s)
2. BPAC reviews and ranks projects for feasibility studies
3. The TPO Board will approve a final ranking of all projects
4. TPO requests a Fee Proposal from consultant to perform a feasibility study
5. TPO schedules a scoping meeting with the consultant, FDOT and local government(s)
6. Consultant provides Fee Proposal to TPO
7. Local government pays the 10% local match for the feasibility study based on the Fee Proposal. TPO pays the majority of the cost for a consultant to perform feasibility studies on the higher ranking projects. (Local governments can bypass the TPO Study if they pay for the feasibility study themselves.)
8. TPO gives the consultant a Notice to Proceed on the feasibility study
9. Draft feasibility study is reviewed and approved by the TPO, FDOT and local government(s)
10. Final feasibility study is completed

Project Implementation

1. Local government submits project(s) and an official letter agreeing to pay at least 10% of the programmed project implementation cost, and agreeing to pay for any cost overruns
2. BPAC reviews and ranks projects for project implementation
3. The TPO Board will approve a final ranking of all projects
4. TPO coordinates with FDOT to program the project in the next available fiscal year of the FDOT Work Program
5. Construction of top ranked project is approximately 2-4 years



BPAC Meeting October 11, 2023

V. STAFF COMMENTS

- Lexington Boulevard Bicycle/Pedestrian Facilities
- Mobility Week/White Cane Awareness Events
- River to Sea TPO Reapportionment Plan/Urban Area Boundary



BPAC Meeting October 11, 2023

VI. INFORMATION ITEMS

- BPAC Attendance Record
- BPAC Project Review Subcommittee Meeting Summary
- Central Park Bike Rodeo and Ride News Release
- FDOT Tentative Five-Year Work Program Public Hearing FY 2024/25 – 2028/29
- TPO Board Report
- TPO Outreach & Activities
- Upcoming Events Flyer



CENTRAL PARK BIKE RODEO & RIDE

Friday, Nov. 3, 2023 | 5-7 PM

Join us for fun at the **Central Park Bike Rodeo & Ride**, at Central Park in Town Center, 975 Central Ave., Palm Coast. Bring your bicycle and ride around the lake with your favorite Palm Coast Firefighters and Flagler County Sheriff's Deputies!

*A limited number of bicycles will be available for use on a first-come first-served basis.



- **FREE** Helmet
- **FREE** Bike Light
- **E-Bicycle** Demos
- **FOOD TRUCKS**
- **& MORE!**





VISIT
WWW.FDOT.GOV/WPPH/DISTRICT5



TENTATIVE FIVE-YEAR WORK PROGRAM ONLINE PUBLIC HEARING

FISCAL YEAR 2024/25
TO
FISCAL YEAR 2028/29

VIRTUAL PUBLIC HEARING
OCTOBER 16, 2023 - OCTOBER 20, 2023

Visit www.fdot.gov/WPPH/District5

OPEN HOUSE
OCTOBER 17, 2023, FROM 3 PM TO 5:30 PM

FDOT DISTRICT 5 OFFICE
719 SOUTH WOODLAND BOULEVARD
DELAND, FL 32720

Public comments due by **NOVEMBER 3, 2023**

Public participation is solicited without regard to race, color, national origin, age, sex, religion, disability, or family status. Persons who require special accommodations under the Americans with Disabilities Act or persons who require translation services (free of charge) should contact Melissa McKinney by email at Melissa.McKinney@dot.state.fl.us.

Para preguntas en Español: Valoramos la opinión del público sobre esta información e proyectos. Si usted tiene preguntas/comentarios, o desea mas información en Español, por favor comuníquese con Katherine Alexander-Corbin al teléfono (386) 943-5168, o al correo electrónico D5-WPPH@dot.state.fl.us.



**BPAC Meeting
October 11, 2023**

VII. BPAC MEMBER COMMENTS



**BPAC Meeting
October 11, 2023**

VIII. ADJOURNMENT

The next BPAC meeting will be on November 8, 2023