



River to Sea CAC/TCC Meetings

**August 15, 2023
1:15 p.m. & 3:00 p.m.**



CAC/TCC Meetings
August 15, 2023

I. Call to Order/Roll Call/Determination of Quorum/ Pledge of Allegiance





CAC/TCC Meetings
August 15, 2023

II. Public Comment/Participation



CAC/TCC Meetings

August 15, 2023

III. ACTION ITEMS

A. REVIEW AND APPROVAL OF THE JUNE 20, 2023 CAC/TCC MEETING MINUTES



CAC/TCC Meetings

August 15, 2023

III. ACTION ITEMS

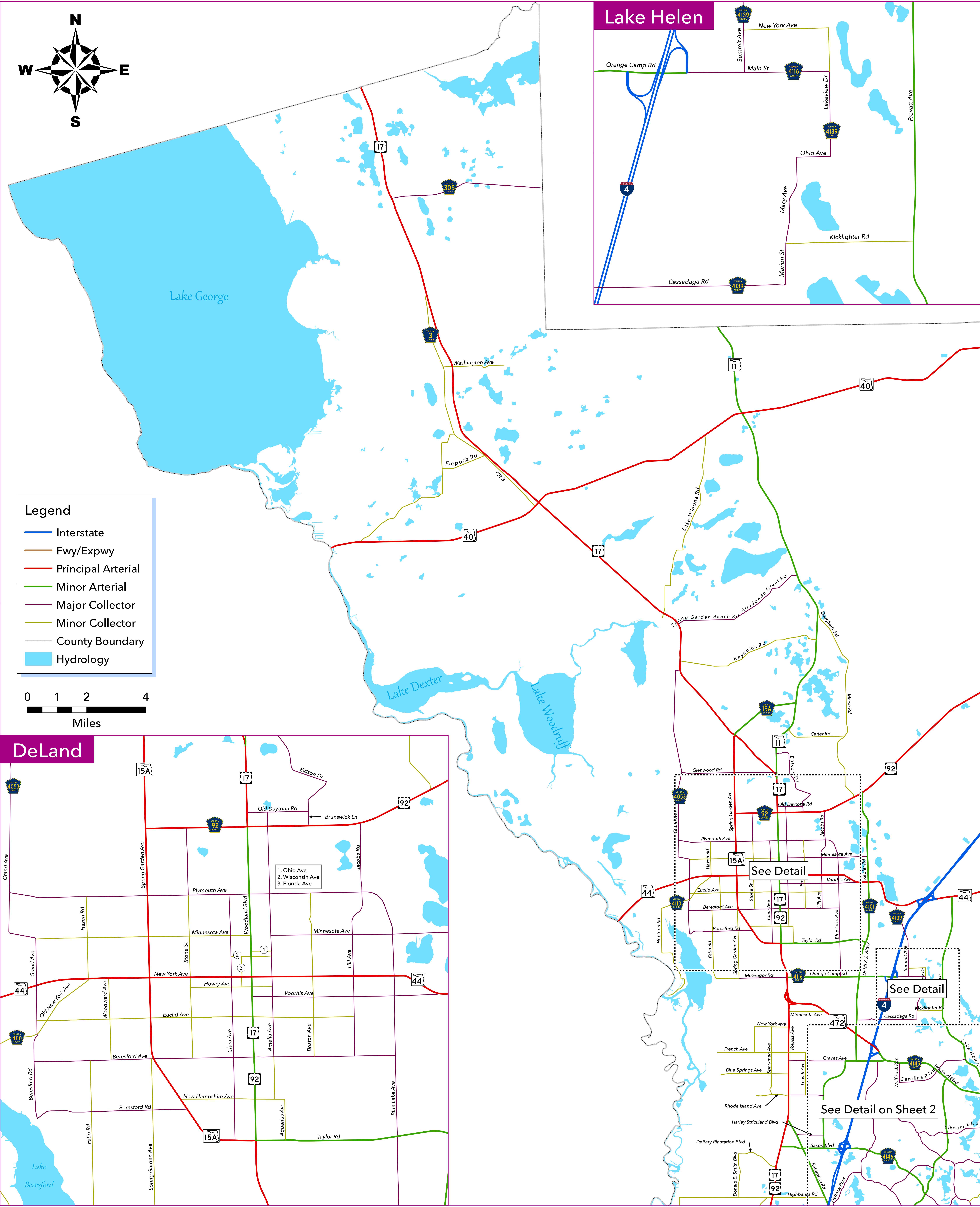
**B. REVIEW AND RECOMMEND APPROVAL OF RESOLUTION
2023-## AMENDING THE FY 2023/24 TO FY 2027/28
TRANSPORTATION IMPROVEMENT PROGRAM (TIP) (ROLL
CALL VOTE REQUIRED)**

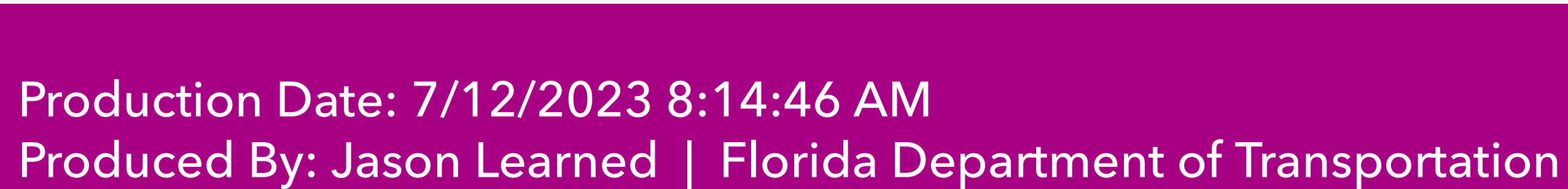


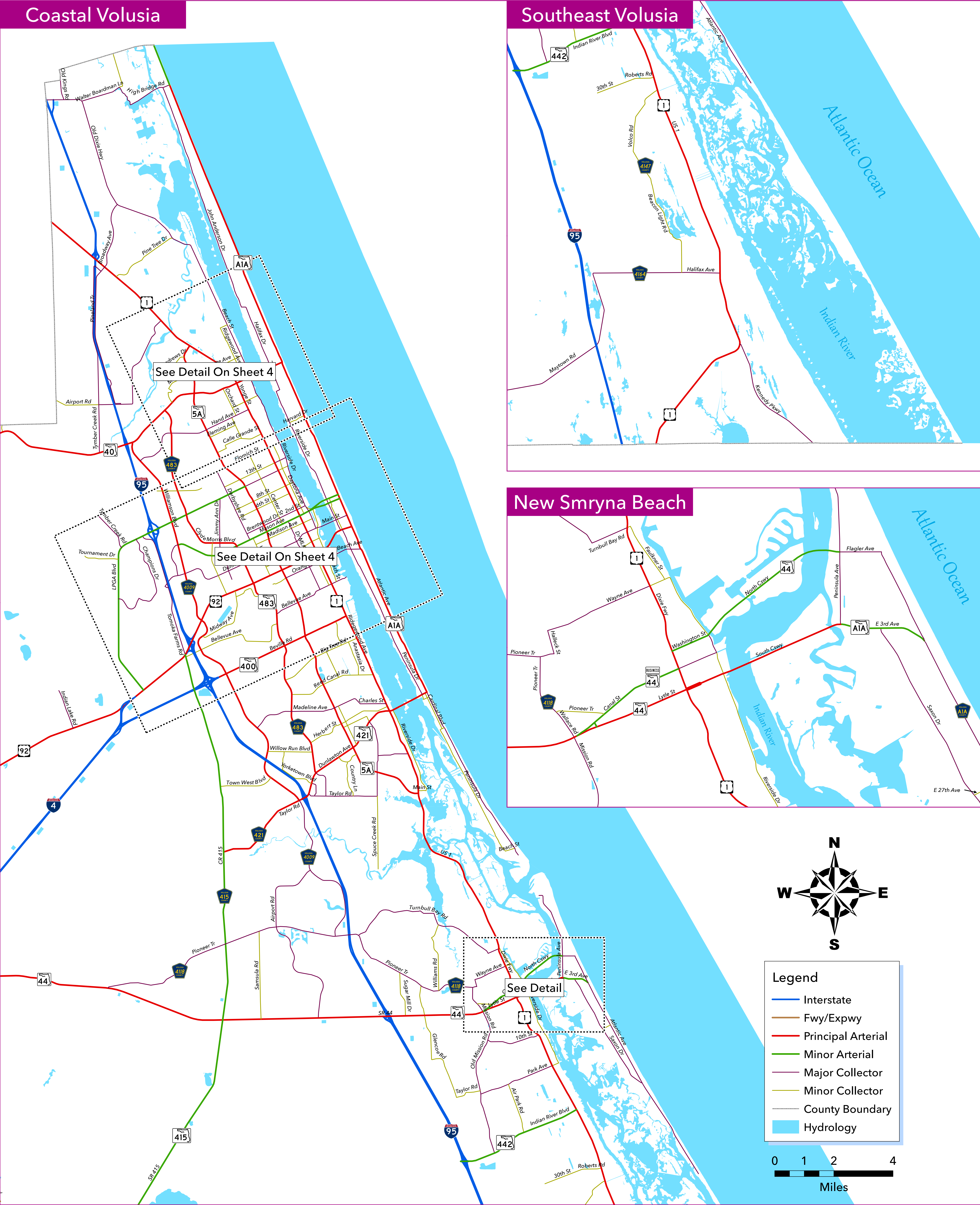
CAC/TCC Meetings August 15, 2023

III. ACTION ITEMS

**C. REVIEW AND RECOMMEND APPROVAL OF RESOLUTION
2023-## ADOPTING THE VOLUSIA AND FLAGLER COUNTY
FUNCTIONAL CLASSIFICATION MAPS**







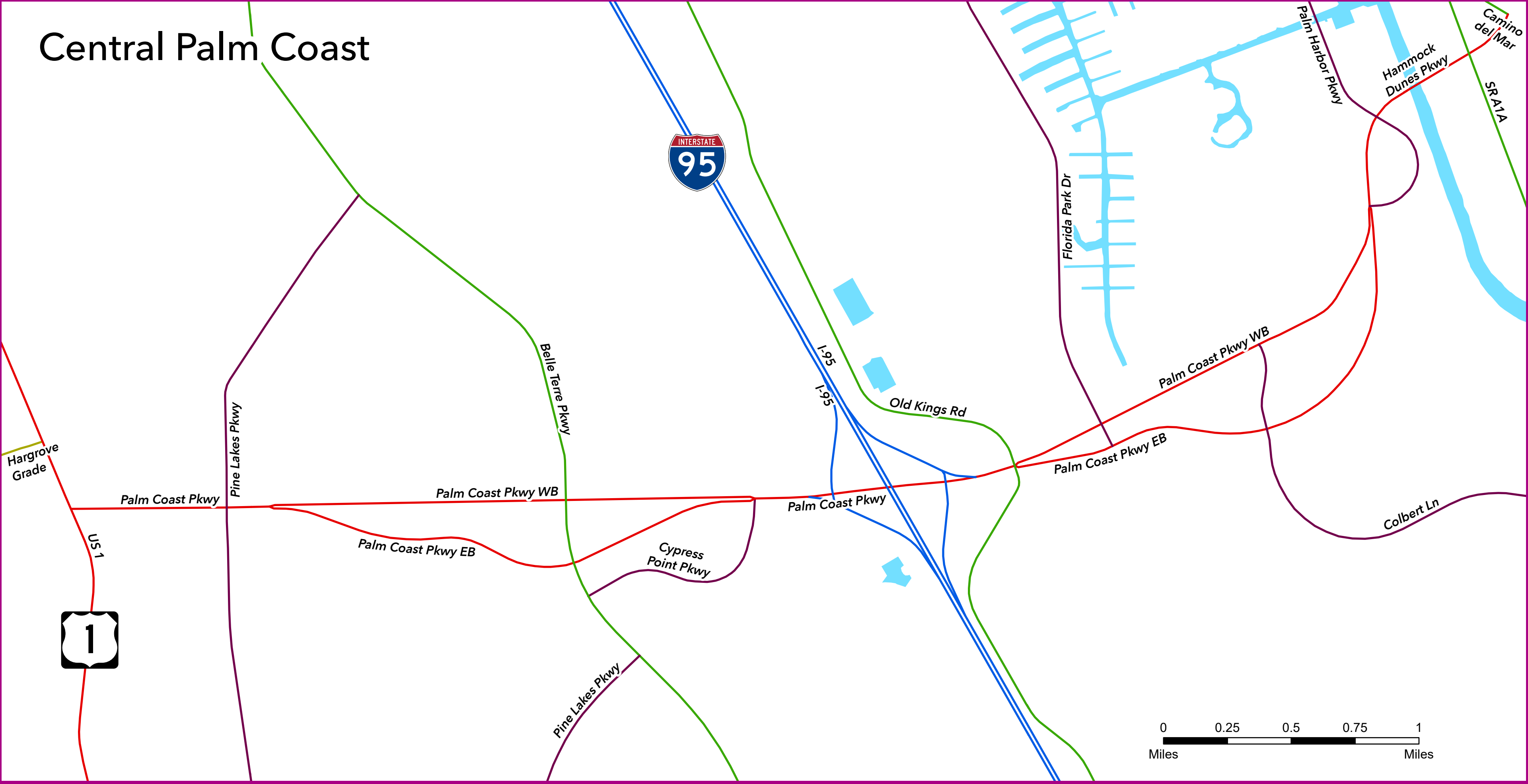
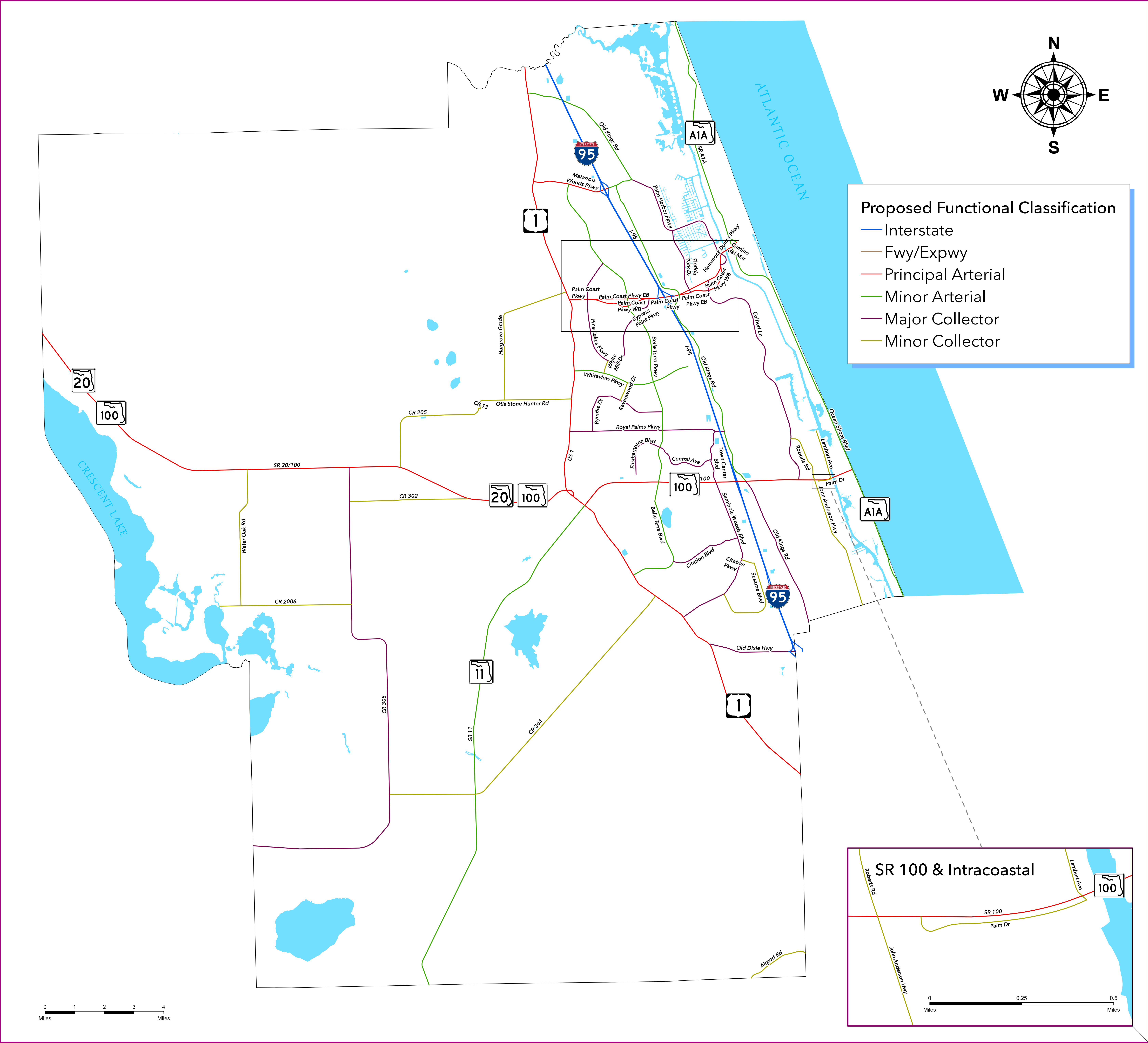
This map of Daytona Beach, Florida, illustrates the city's extensive road network and geographical features. The Atlantic Ocean is located to the east, with the Halifax River flowing into it. Major highways, including Interstate 95 (I-95), Interstate 4 (I-4), and State Road 92 (SR 92), are shown in red. Other significant roads like LPGA Blvd, Seabreeze Blvd, and Main St are highlighted in green. The map also depicts the Daytona International Speedway and the Daytona Beach Convention Center. Various streets are labeled, such as Tomoka Farms Rd, Champions Dr, and Seabreeze Blvd. The map is color-coded to distinguish between different types of roads and water bodies.

This map of Ormond Beach, Florida, displays the following features:

- Water Bodies:** Tomoka River (northwest), Halifax River (east), and Atlantic Ocean (far east).
- Major Roads:**
 - US Highway 1 (red line, running north-south)
 - US Highway 401 (red line, running east-west)
 - US Highway 5A (red line, running north-south)
 - Florida State Road 483 (blue line, running north-south on the west side)
 - Airport Rd (purple line, running north-south)
 - Granada Blvd (red line, running east-west)
 - Orchard St (purple line, running north-south)
 - Center St (purple line, running north-south)
 - Flomich St (purple line, running north-south)
 - Wilmette Ave (yellow line, running east-west)
 - Hand Ave (yellow line, running east-west)
 - Fleming Ave (yellow line, running east-west)
 - Calle Grande St (yellow line, running east-west)
 - Division Ave (yellow line, running east-west)
 - S St Andrews Dr (yellow line, running east-west)
 - Main Tr (yellow line, running east-west)
 - Ridgewood Ave (yellow line, running north-south)
 - Yonge St (yellow line, running north-south)
 - Harvard Dr (yellow line, running east-west)
- Landmarks and Points of Interest:**
 - 2013 Brevard County Fairgrounds (blue shield icon)
 - 483 (blue shield icon)
 - AIA (American International Airport) (white shield icon)
- Other Labels:**
 - Beach St (pointing to a street near the Halifax River)
 - Domicillo Ave (pointing to a street near the Halifax River)
 - Hallfax Dr (pointing to a street near the Halifax River)
 - Fluhart Dr (pointing to a street near the Halifax River)
 - Riverside Dr (pointing to a street near the Halifax River)



Sheet 4 of 4



The 2020 Functional Classification of Public Roadways is a decennial effort mandated by the Federal Highway Administration (FHWA).

It is headed by the Florida Department of Transportation (FDOT) with participation from the public, as well as our local agency partners.



U.S. Department
of Transportation
**Federal Highway
Administration**

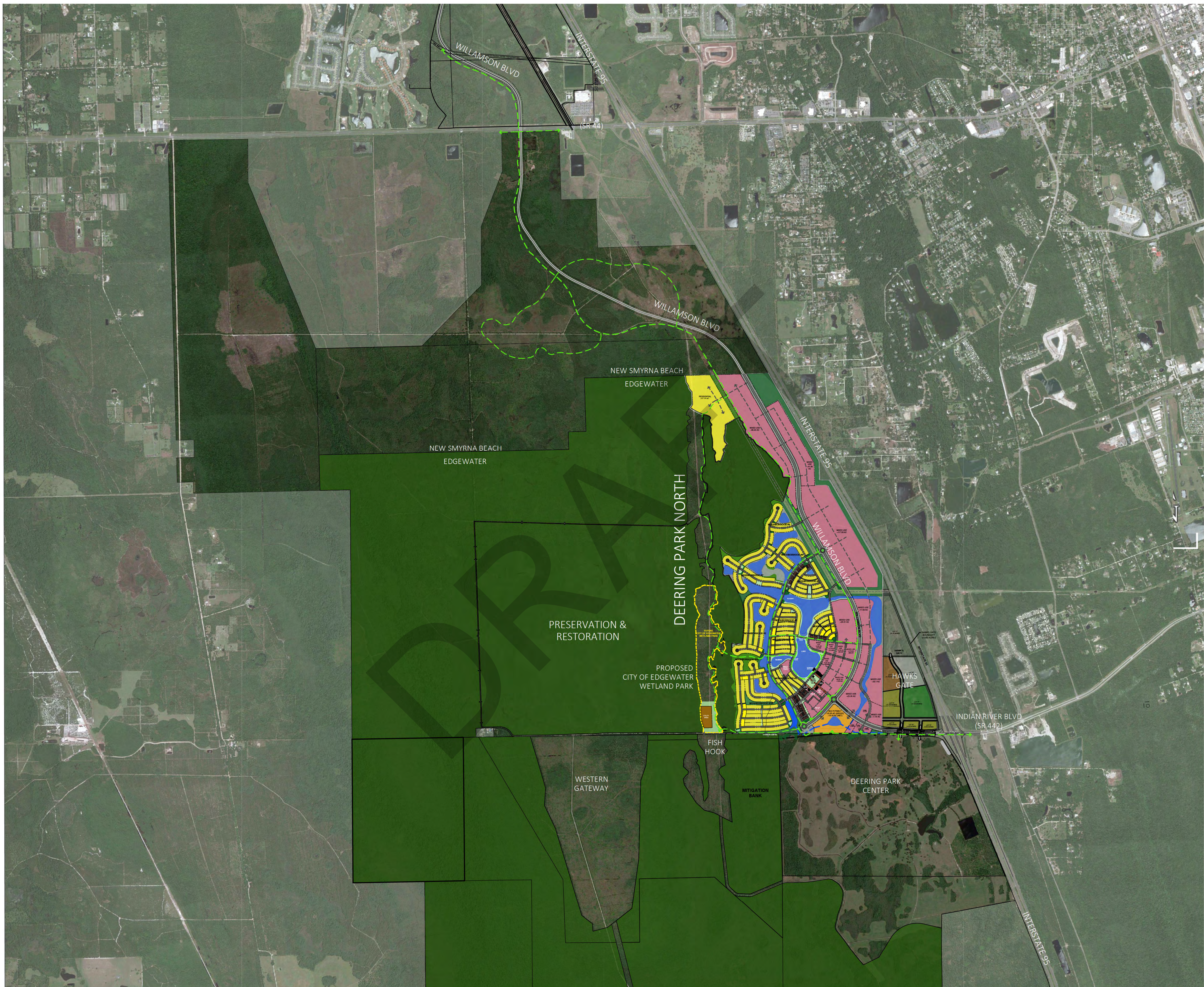




CAC/TCC Meetings August 15, 2023

III. ACTION ITEMS

**D. REVIEW AND RECOMMEND APPROVAL TO AMEND THE
LIST OF SHARED-USE NON-MOTORIZED (SUN) TRAIL
PROJECTS**



DEERING PARK TRAIL NETWORK - CONCEPTUAL MASTER PLAN

scale: 1"= 1320'
05.23.2023

(FOR INTERNAL REVIEW PURPOSES ONLY)

0' 660' 1320' 2640'
SCALE: 1"=1320'

River to Sea TPO List of Shared Use Nonmotorized (SUN) Trail Projects
Draft 6/20/2023

Tier "A" - Projects in the SunTrail Work Program										
Regional Trail System	FM #	County	Project Name	Project Limits	Description	Project Sponsor	Programmed Phase(s)	Unfunded Phase(s)	Estimated Total Project Cost	Comments
SJR2C	4390396	Volusia	Spring to Spring Gap: DeBary (Phase 3C)	W Highbanks Rd to DeBary Plantation Bv	Trail	Volusia County	CST-\$2,411,243 FY 24/25	None	\$1,500,000	FULLY-FUNDED
C2C, HOF	4391951	Volusia	Coast to Coast Gap: DeBary	Fort Florida Rd to Coast to Coast Trail	Trail	DeBary	CST \$225,000 FY 20/21	None	\$500,000	FULLY-FUNDED
SJR2C	4398622	Volusia	Oak Hill to Edgewater: US 1	US 1 to Dale Ave	Trail	Volusia County	CST-\$5,889,944 FY 25/26	None	\$8,238,945	FULLY-FUNDED
SJR2C	4398641	Volusia	New Smyrna Gap: Myrtle Av	10 th St to SR 44/Lytle Av	Trail	New Smyrna Beach	CST-\$2,099,830 FY 23/24 CEI-\$298,120 FY 23/24	None	\$4,111,232	FULLY-FUNDED
SJR2C	4398652	Volusia	Palmetto Av Gap	Ridge Bv to Beville Rd	Trail	South Daytona	PE-\$50,000-FY 23/24 CST-\$1,451,746 FY 24/25 CEI-\$156,100 FY 24/25	None	\$3,068,898	FULLY-FUNDED
SJR2C	4398653	Volusia	Spruce Creek Rd Gap	S of Selin Cir to Herbert St	Trail	Port Orange	CST-\$421,600-FY 22/23	None	\$468,320	FULLY-FUNDED
SJR2C, HOF	4102511	Volusia	US 17 Trail	W. Baxter St to SR 40	Trail	Volusia County	PE-TBD	CST	TBD	Moved from Tier "B"
SJR2C	447963-1	Volusia	New Smyrna Gap: SR 44 to US 1	SR 44/Lytle Av to US 1	Trail	New Smyrna Beach	PD&E-\$750,000 FY 22/23	PE, CST	TBD	PD&E Study

River to Sea TPO List of Shared-Use Nonmotorized (SUN) Trail Projects

<i>Tier "B" - Projects Awaiting Funding</i>										
Regional Trail System	FM #	County	Project Name	Project Limits	Description	Project Sponsor	Programmed Phase(s)	Unfunded Phase(s)	Estimated Total Project Cost	Comments
HOF	4106761	Volusia	SR 40 Black Bear Scenic Trail	Volusia/Lake County Line to US 17	Trail	Volusia County	PD&E Study	PE, CST	TBD	
SJR2C	4398654	Volusia	South Daytona Gap	Sauls St/McDonald Rd to Carmen Dr/Ridge Bv	Trail	South Daytona		CST	TBD	
SJR2C	4398655	Volusia	US 1 Trail	South St to Nova Rd	Trail	Volusia County		PE, CST	TBD	
SJR2C	4398721	Volusia	Ormond Beach Gap: SR 40	Cassen Park to A1A	Trail	Ormond Beach		PE, CST	TBD	
SJR2C	4398742	Volusia	Spring to Spring Gap: DeLand	Lake Beresford Park to Old New York Av	Trail	Volusia County		ROW, CST	TBD	
SJR2C	4398743	Volusia	Spring to Spring Gap: DeLand	Old New York Av to SR 44	Trail	Volusia County		ROW, CST	TBD	
SJR2C	4398744	Volusia	Spring to Spring Gap: DeLand	SR 44 to Minnesota/Grand Av	Trail	Volusia County		ROW, CST	TBD	
SJR2C	4398761	Volusia	SR 15 (US 17)	SR 40 to Putnam County Line	Trail	Volusia County		CST	TBD	
SJR2C	4428741 4509461	Volusia	SJR2C Loop Trail (A1A)	Plaza Dr to Volusia/Flagler County Line	Trail	Volusia County		PE, CST	TBD	
SJR2C		Volusia	Sauls St to Carmen Dr Shared Use Path	Sauls St to Carmen Dr	Trail	South Daytona	PE, CST	\$8,800,000		
SJR2C		Volusia	Halifax River/East Coast Greenway Trail	Orange Ave to VM Bridge (Phase 1); VM Bridge to ISB (Phase 2)	Trail	Daytona Beach		PE, CST	\$910,270	AKA Sweetheart Trail Loop
Palm Coast to Ormond Trail Corridor		Flagler	Graham Swamp Trail Gap, Phase 2	Lehigh Trail to Graham Swamp Trail head	Trail	Palm Coast		PE, CST	\$3,430,000	
East Central Regional Rail Trail		Volusia	Deering Park North Trail	SR 44 to East Central Regional Rail Trail	Trail	Edgewater		PE, CST	TBD	East Central Regional Rail Trail connection to Florida Wildlife Corridor



CAC/TCC Meetings

August 15, 2023

IV. PRESENTATION, STATUS REPORTS, AND DISCUSSION ITEMS

A. PRESENTATION AND DISCUSSION OF THE NOVA ROAD (SR 5A) COALITION CORRIDOR IMPROVEMENT PROJECT



Nova Road
5A

Nova Road Coalition

FPID No.: 450644-1

Presentation to River to Sea TPO





1

PROJECT OVERVIEW

2

RECOMMENDED ALTERNATIVE

3

WHAT HAPPENS NEXT?

What is a Coalition?

**Potential Improvements
Incorporated into a Roadway
Maintenance Project**

**Focused on Community
Engagement**

**Implementation of Safety
Improvements**

**Design and Construction
Phases are Already Funded**

Project Partners

Agency Partners

FDOT

City of
Ormond
Beach

Volusia
County

River to
Sea TPO

Community Partners

Ormond
Beach
Chamber of
Commerce

The Trails
Shopping
Center

The Trails
Homeowners
Association

Tomoka Oaks
Homeowners
Association

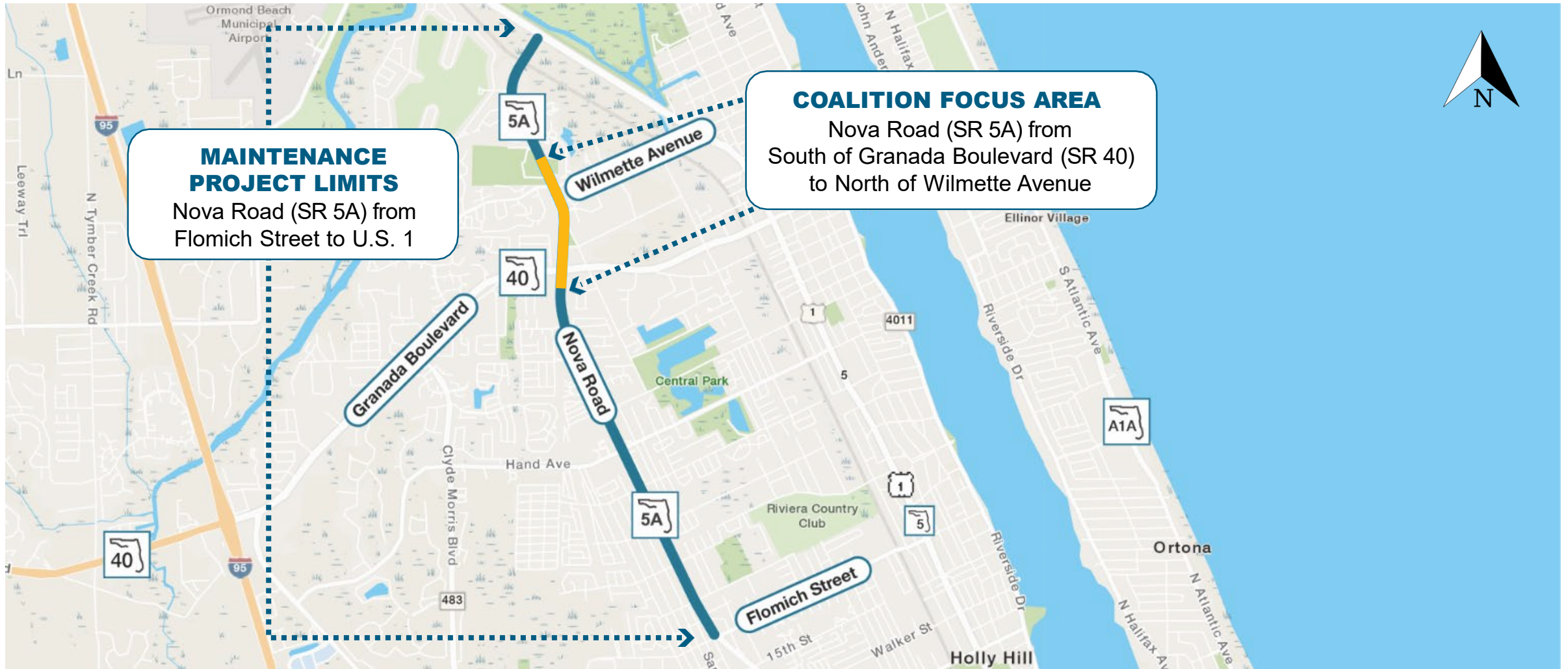
Avante at
Ormond
Beach

Volusia
Memorial
Funeral
Home and
Cemetery

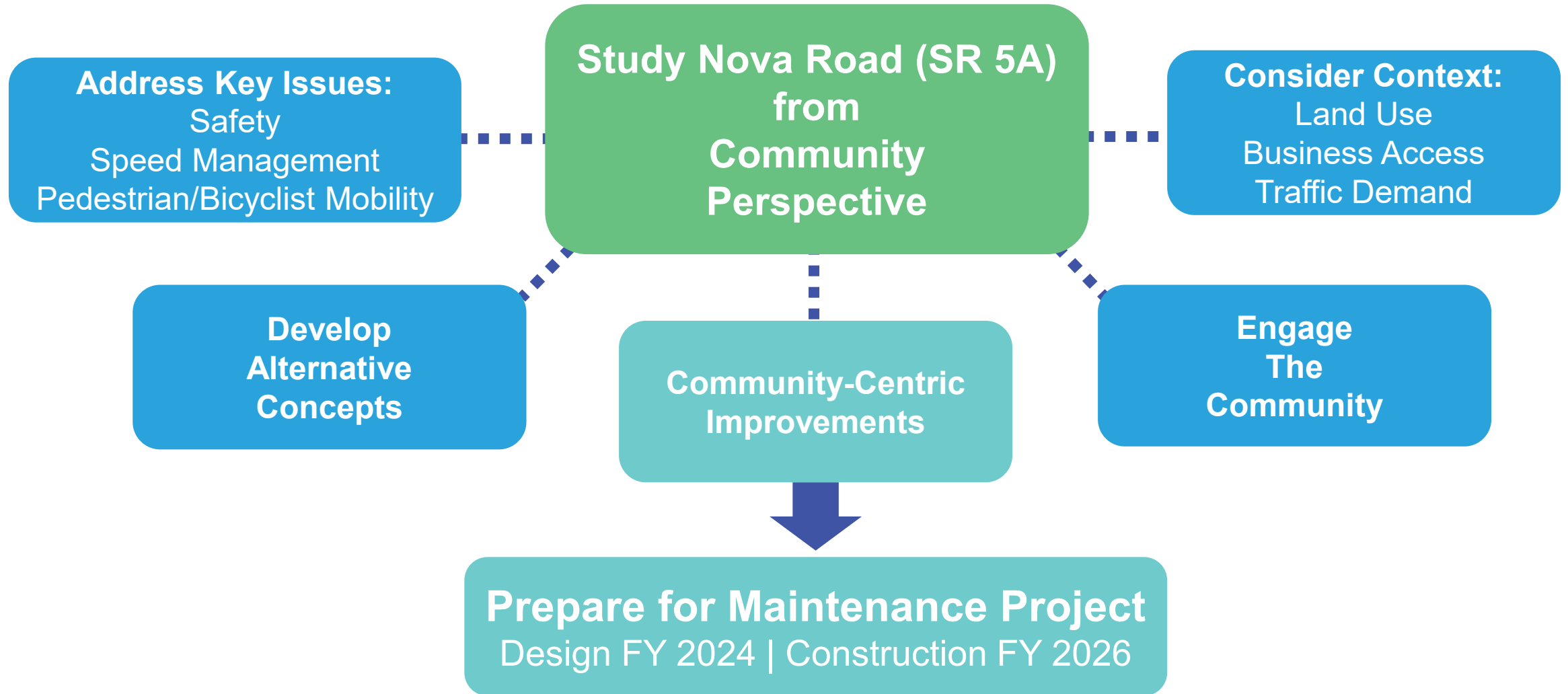
Ormond
Beach
Marketplace

Rivergate
Village

Project Limits and Focus Area



What are the Goals of this Project?



Identified Issues

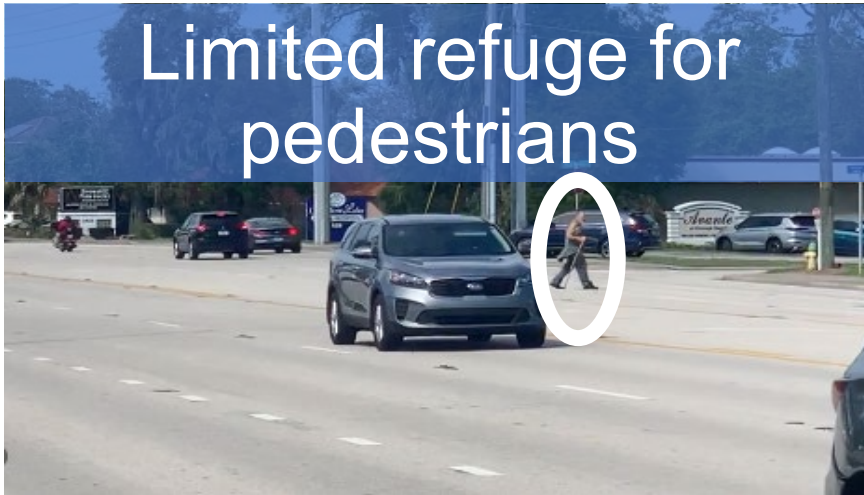
Bicyclists & pedestrians crossing mid-block



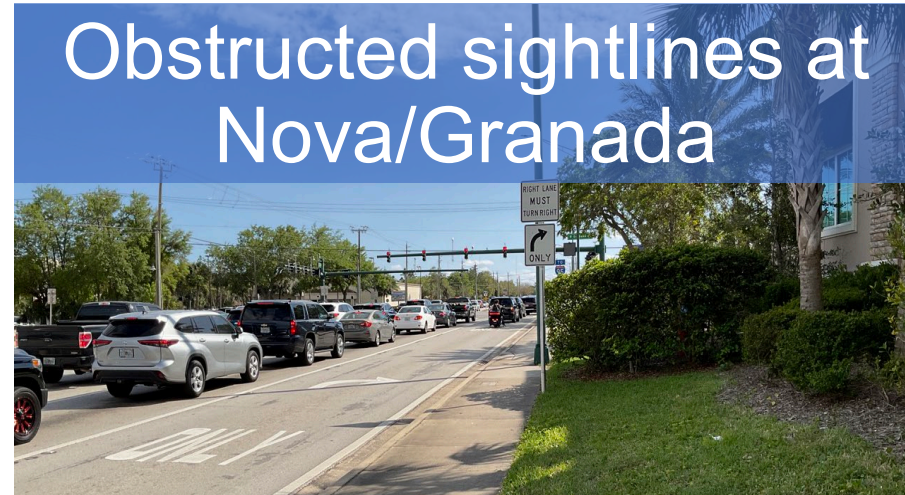
Limited bicycle facilities



Limited refuge for pedestrians



Obstructed sightlines at Nova/Granada



Alternative #1

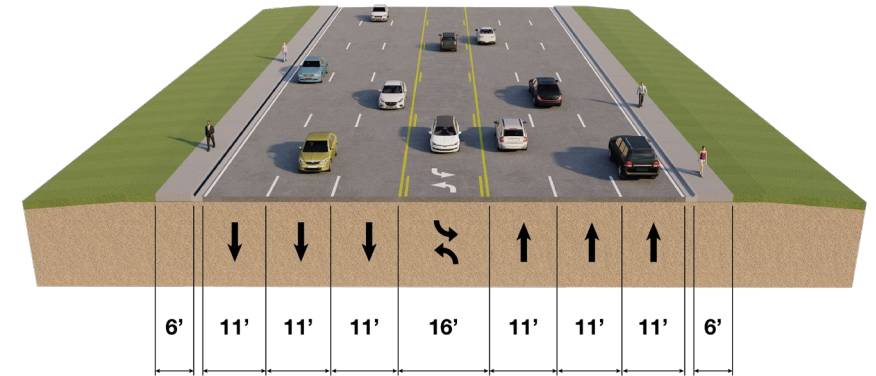


Alternative #2

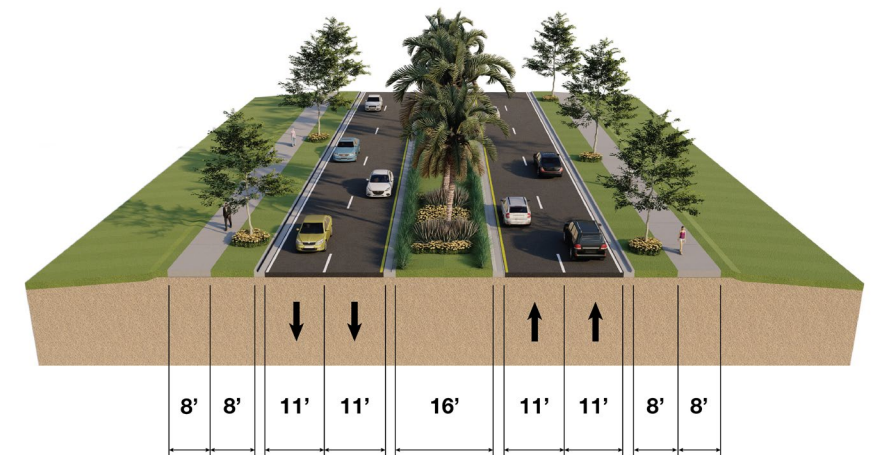


Recommended Alternative

- **Alternative #1** - Wider Sidewalk and Landscape Buffer
- Recommendation based on PVT input and Community comments
- Final concept to include modifications based on feedback

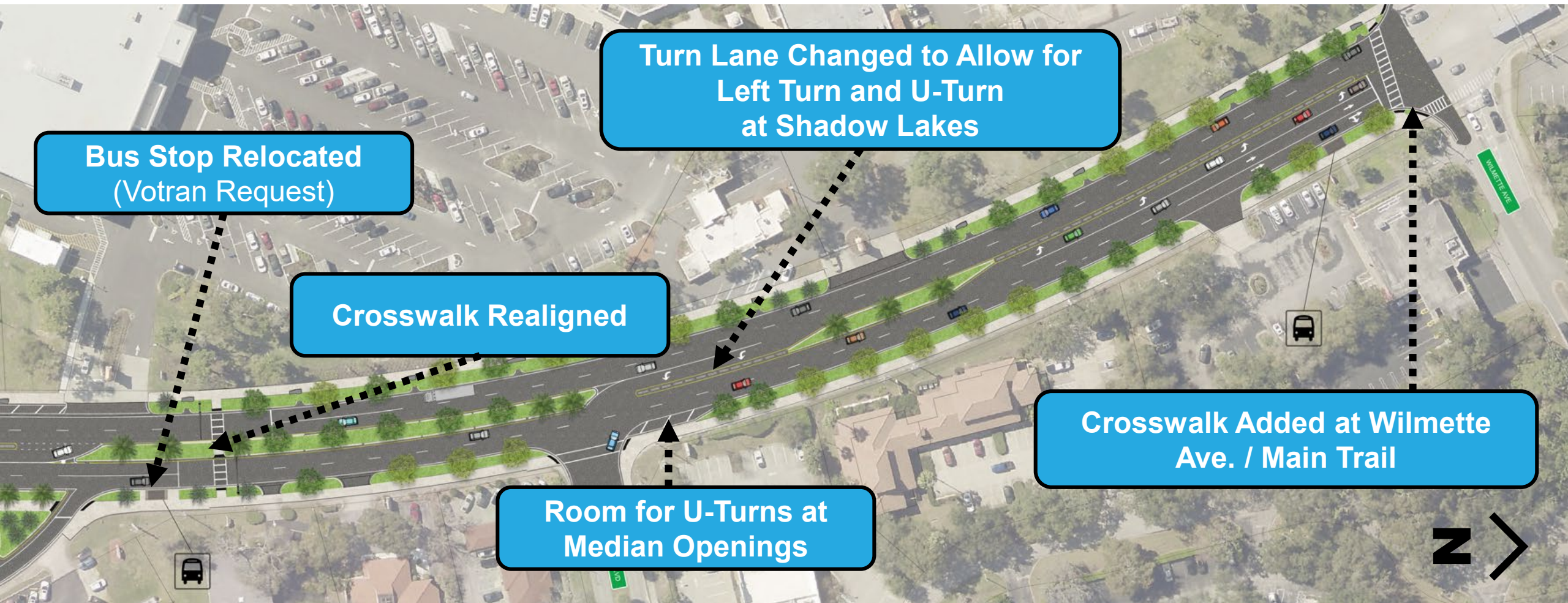


Existing Conditions



Alternative 1

Final Recommended Concept



**Bus Stop Relocated
(Votran Request)**

**Turn Lane Changed to Allow for
Left Turn and U-Turn
at Shadow Lakes**

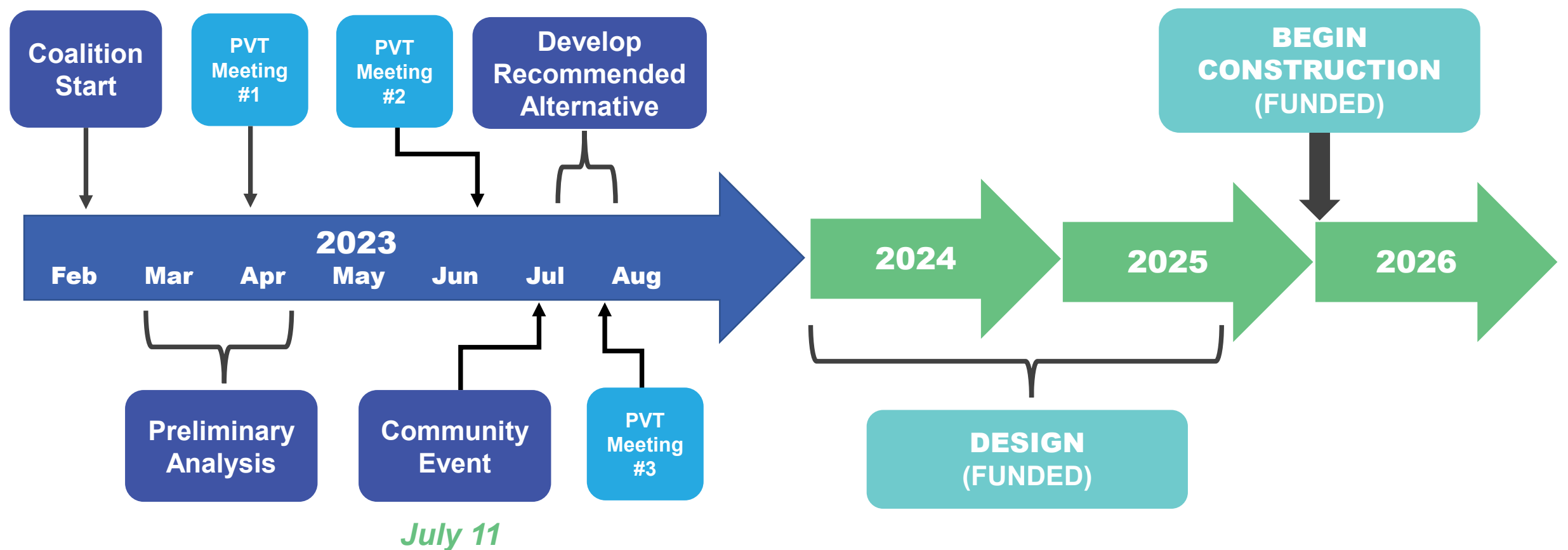
Crosswalk Realigned

**Room for U-Turns at
Median Openings**

**Crosswalk Added at Wilmette
Ave. / Main Trail**



Schedule Overview



All dates are subject to change

Stay Informed

Project Web Page on CFLRoads:

The screenshot shows the FDOT website interface. At the top is the FDOT logo and navigation links. Below is a search bar and a project list. The selected project is 450644-1 Nova Road (S.R. 5A) from Flomich Street to U.S. 1. The page features a map of the project area, project details, and contact information.

FDOT Florida Department of TRANSPORTATION

E-Updates | FL511 | Site Map

Search FDOT...

Home About FDOT Contact Us Maps & Data Offices Performance Projects

CFLRoads Home Lane Closures Construction Projects Future Projects News Resources Search CFLRoads... Go

450644-1 Nova Road (S.R. 5A) from Flomich Street to U.S. 1

Map Satellite

Ormond Beach

DAYTONA OAK RIDGE RIVER ORMOND SHORES

BREAKAWAY TRAILS

WESTWOOD HEIGHTS

Holly Hill

SEABREEZE

Keyboard shortcuts Map data ©2023 Google Terms of Use Report a map error

Project Details

Work Type: Safety Study

Phase: Planning

Length: 3.91 miles

City: Ormond Beach

County: Volusia

Road: SR 5

Send a comment or ask a question about this project

Contact Information

Planning Project Manager

Emily Casey
(386) 943-5338
Emily.Casey@dot.state.fl.us

About

The Florida Department of Transportation is conducting a Planning Study to evaluate proposed transportation solutions for segments of Nova Rd (S.R. 5A) between Flomich Street and U.S. 1. The study is considering capacity, safety, and multi-modal enhancements along the subject corridors. The improvements will be considered in the context of surrounding land use, business access, and accommodating traffic and travel demand. Presented alternatives will address safety, congestion and connectivity/accessibility.

www.cflroads.com/project/450644-1



Design Project Contact:

Gene Varano
FDOT Project Manager

FDOT District Five
719 S. Woodland Blvd., MS 542
DeLand, FL 32720

Phone:
386-943-5145

Email:
Gene.Varano@dot.state.fl.us

Thank You!



CAC/TCC Meetings

August 15, 2023

IV. PRESENTATION, STATUS REPORTS, AND DISCUSSION ITEMS

B. PRESENTATION AND DISCUSSION OF THE FDOT CENTRAL FLORIDA I-4 TRUCK PARKING FACILITIES APPLICATION TO THE US DOT INFRASTRUCTURE FOR REBUILDING AMERICA (INFRA) GRANT PROGRAM



Florida Department of
Transportation (FDOT)

Truck and Freight Site Analysis Project Development & Environment (PD&E) Study

Interstate 4 (District 5)

Financial Project Identification (FPID) No.: 447724-1

National Truck Parking Need

48%

SAFETY

Of truck drivers spend over an hour searching for a place to park.

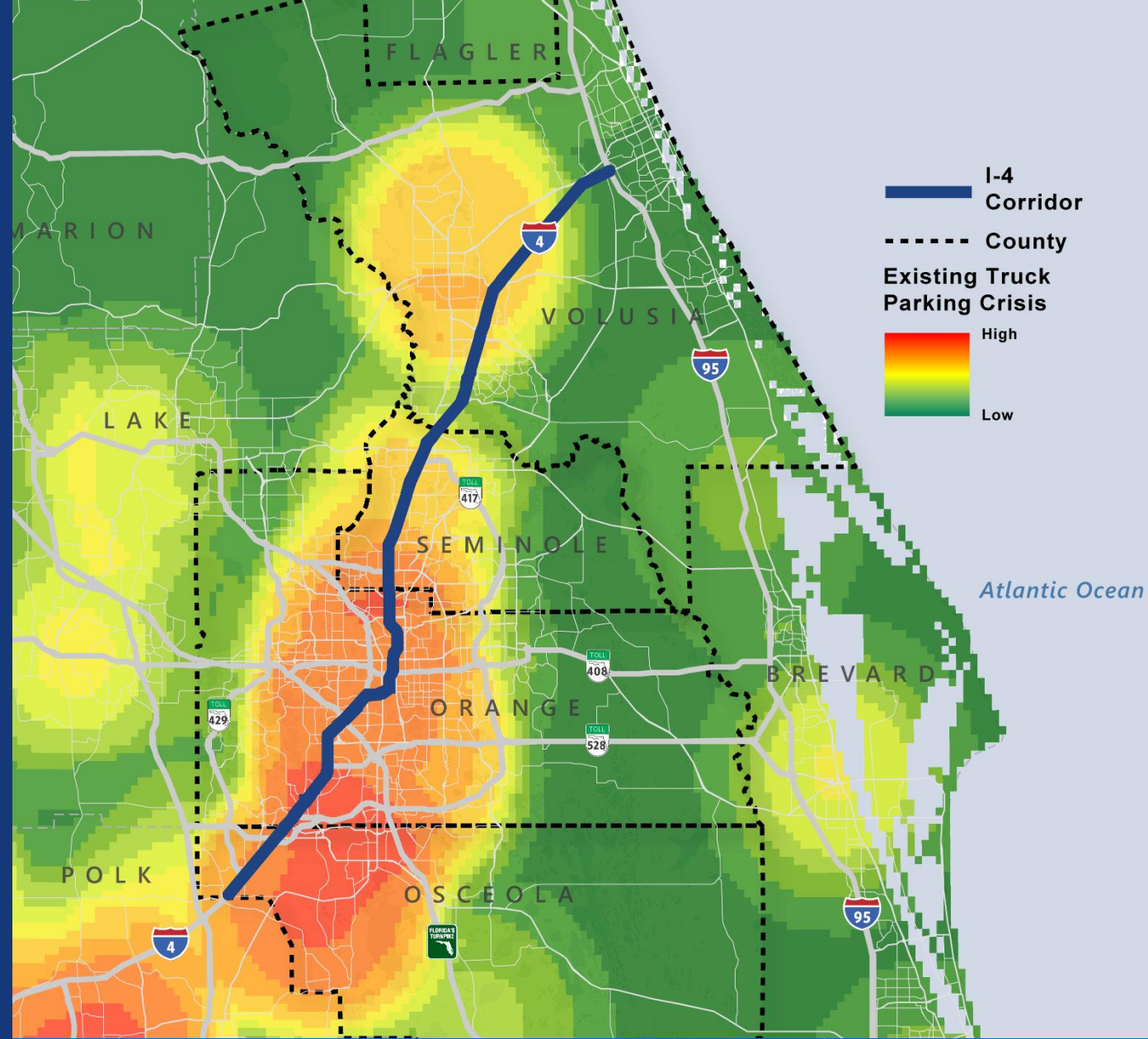
\$5.1B

ECONOMICS

Annual loss in revenue due to lack of truck parking (wasted fuel, time lost, additional maintenance, associated crashes, etc.)

Source: TruckerPath (2018 national statistics)





I-4 Truck Parking Need

36

Current Available Spaces

481

Current Existing Demand

750

2025 Demand

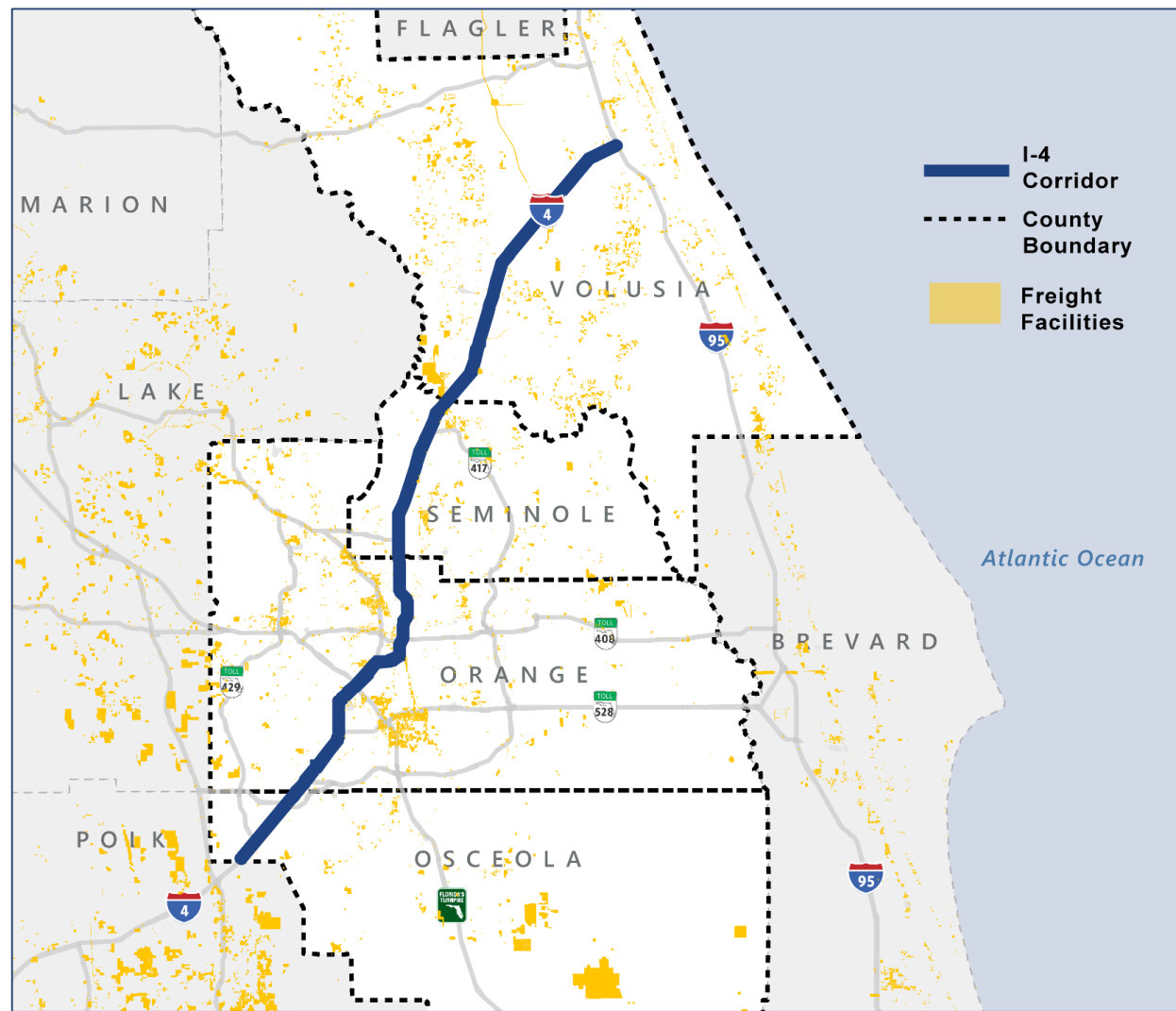
883

2040 Demand

I-4 corridor (D5) has the highest unmet truck parking demand in the state

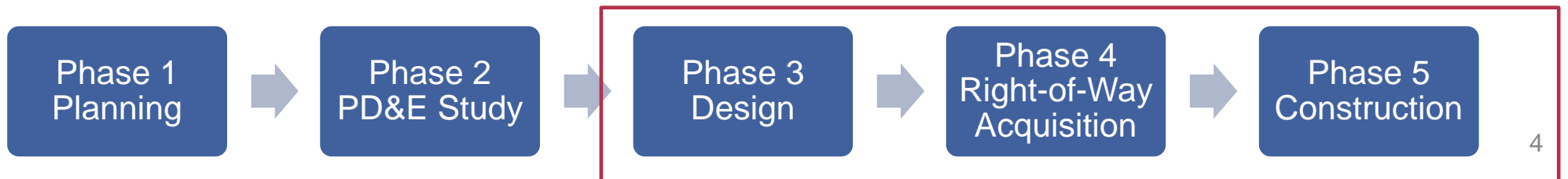
Purpose and Need

Identify, evaluate, and recommend viable candidate truck parking sites near the D5 I-4 corridor for public and/or private development.



We are here →

Separate path for each site

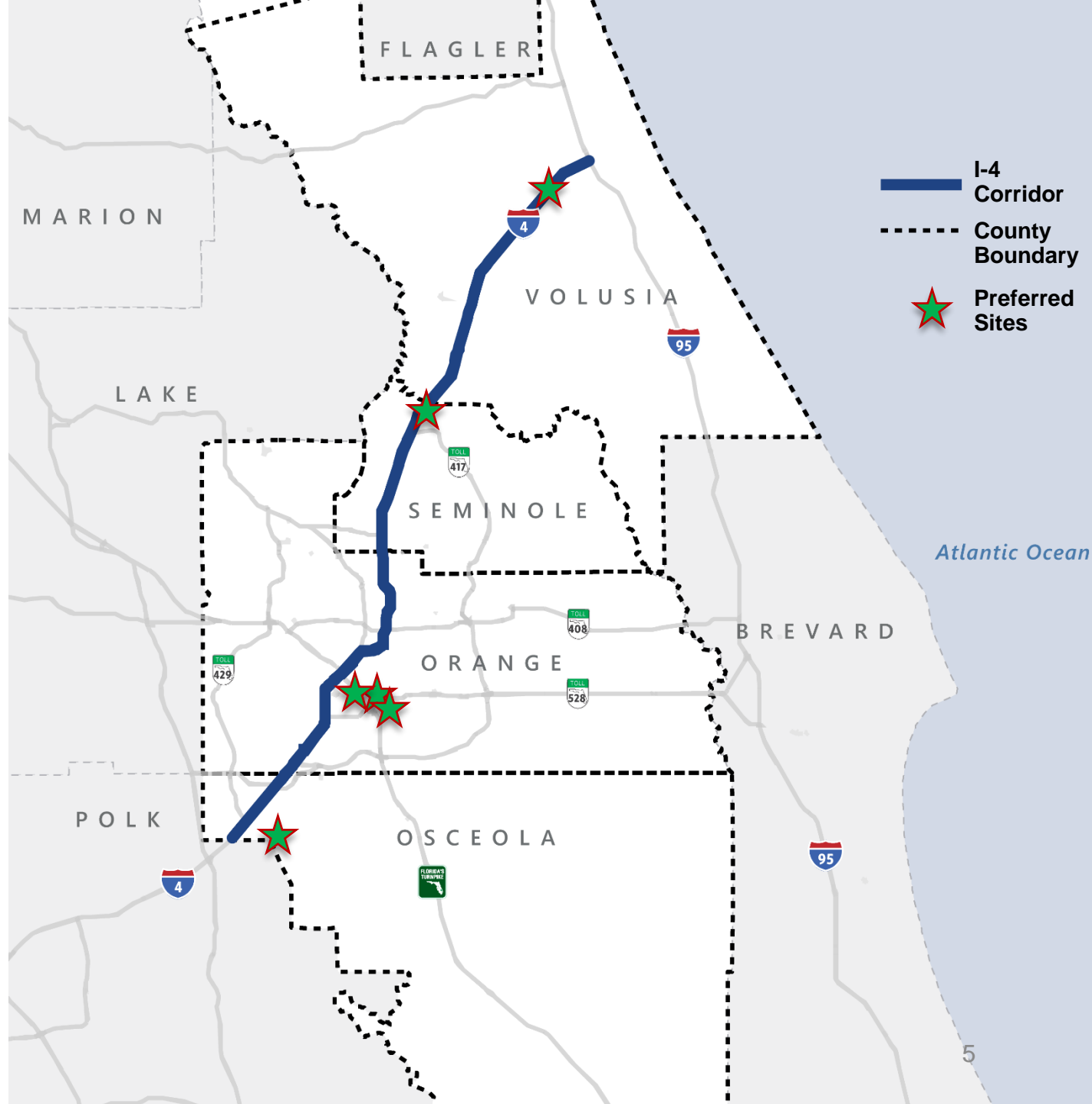


Vi able Sites

4
C O U N T I E S

Osceola County, Orange County,
Seminole County, Volusia County

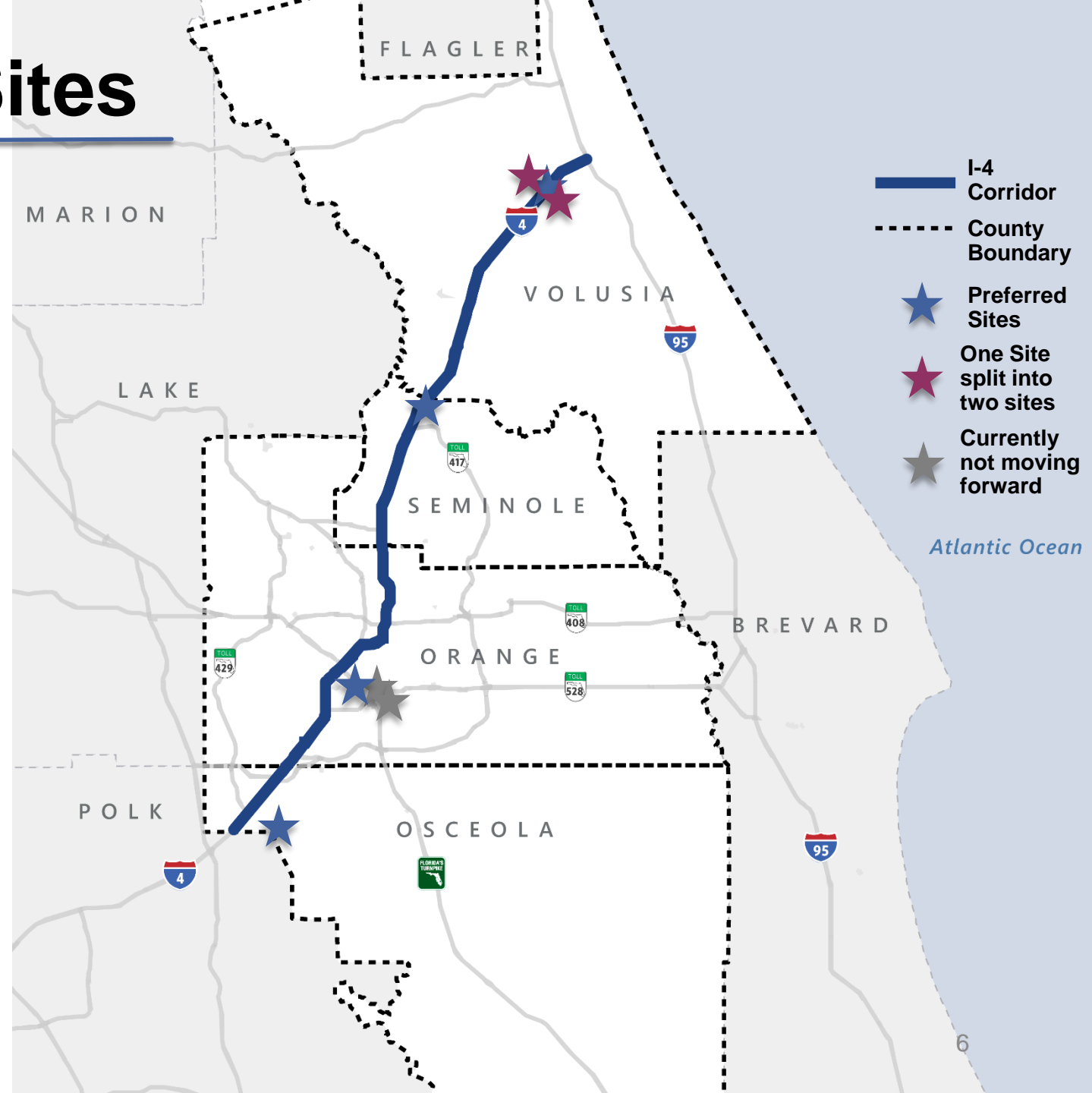
6
S i t e s



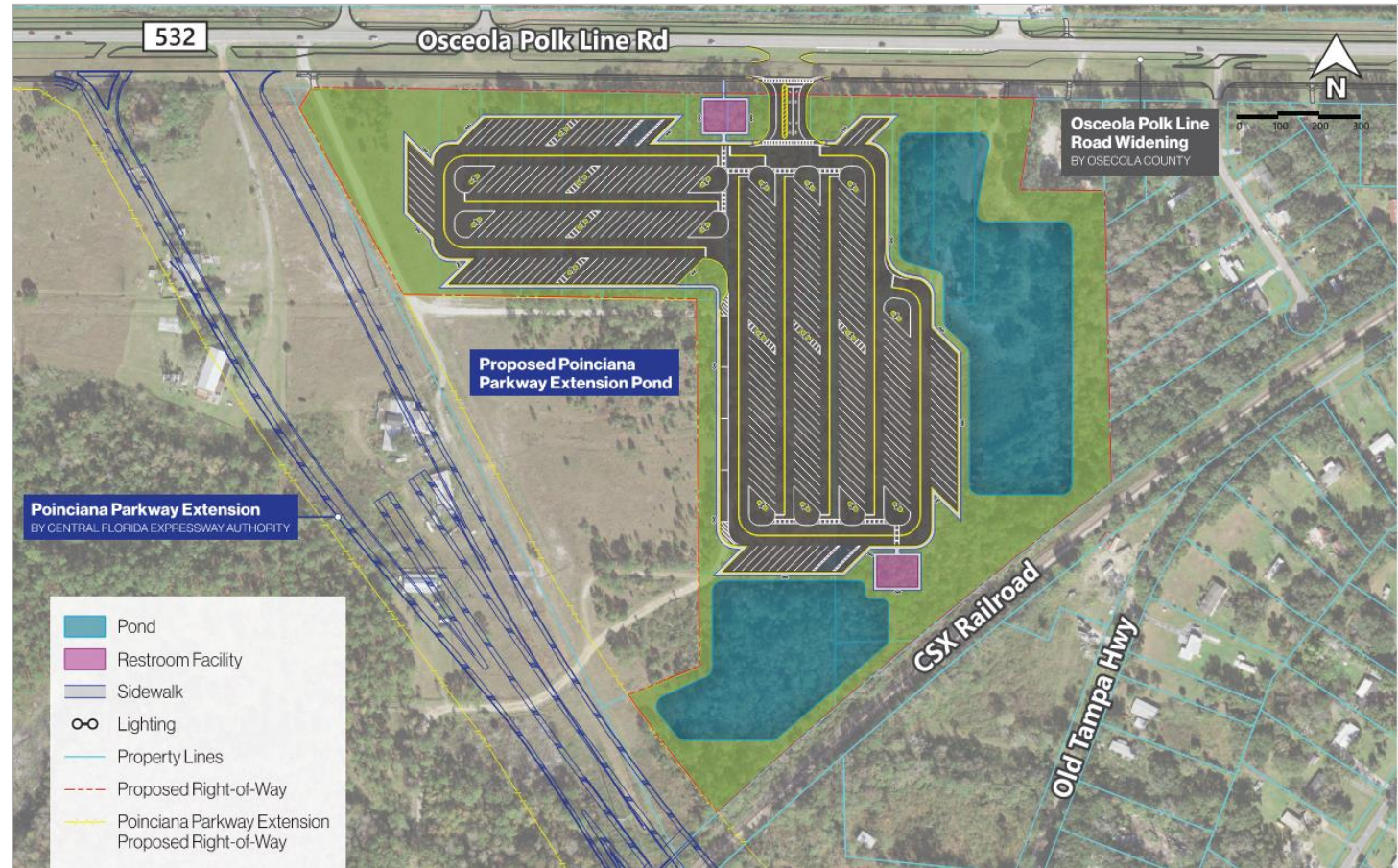
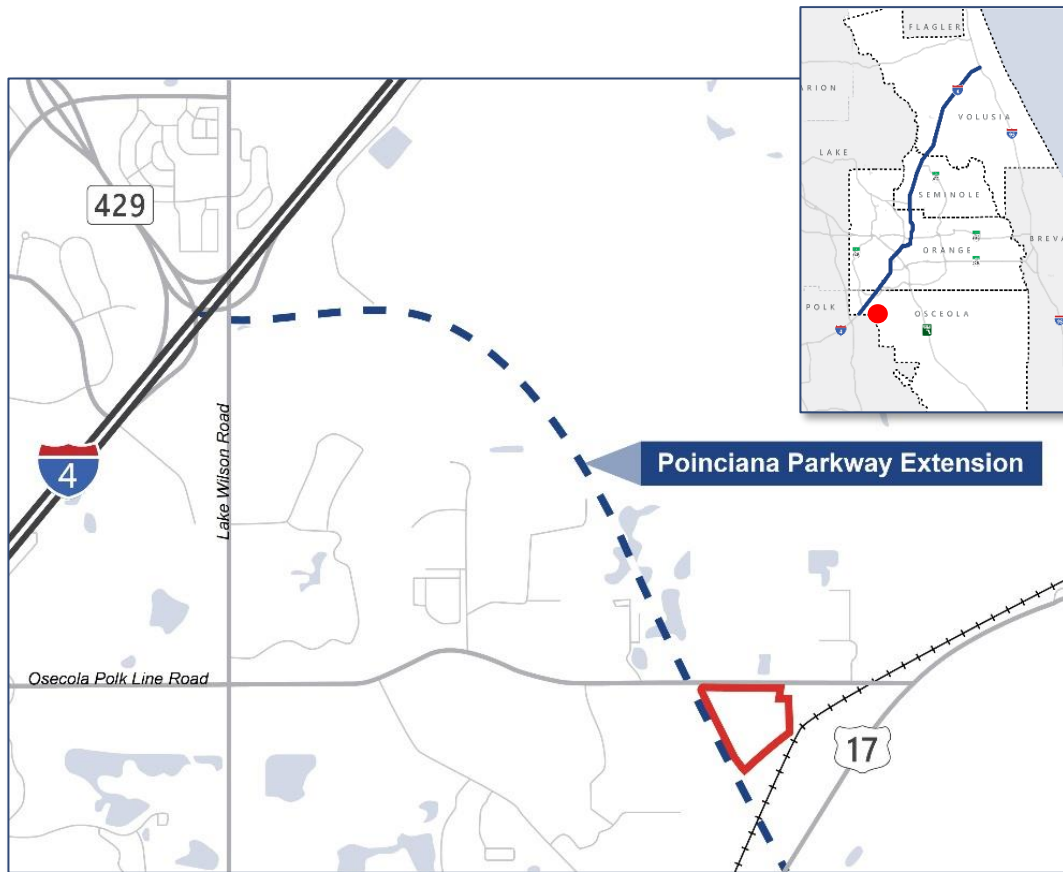
Recommended Sites

- Orange County Sites 2 and 4 are on hold due to funding constraints.
 - Volusia Site will be documented as 2 independent sites (EB & WB)
1. Osceola County Site 1
 2. Orange County Site 1
 3. Seminole County 1B
 4. Volusia County 1A (EB)
 5. Volusia County 1B (WB)

Seminole County Site 1B, as recommended by this PD&E Study, is in Design. PD&E Reevaluation of the I-4 BtU Segment 3 project underway



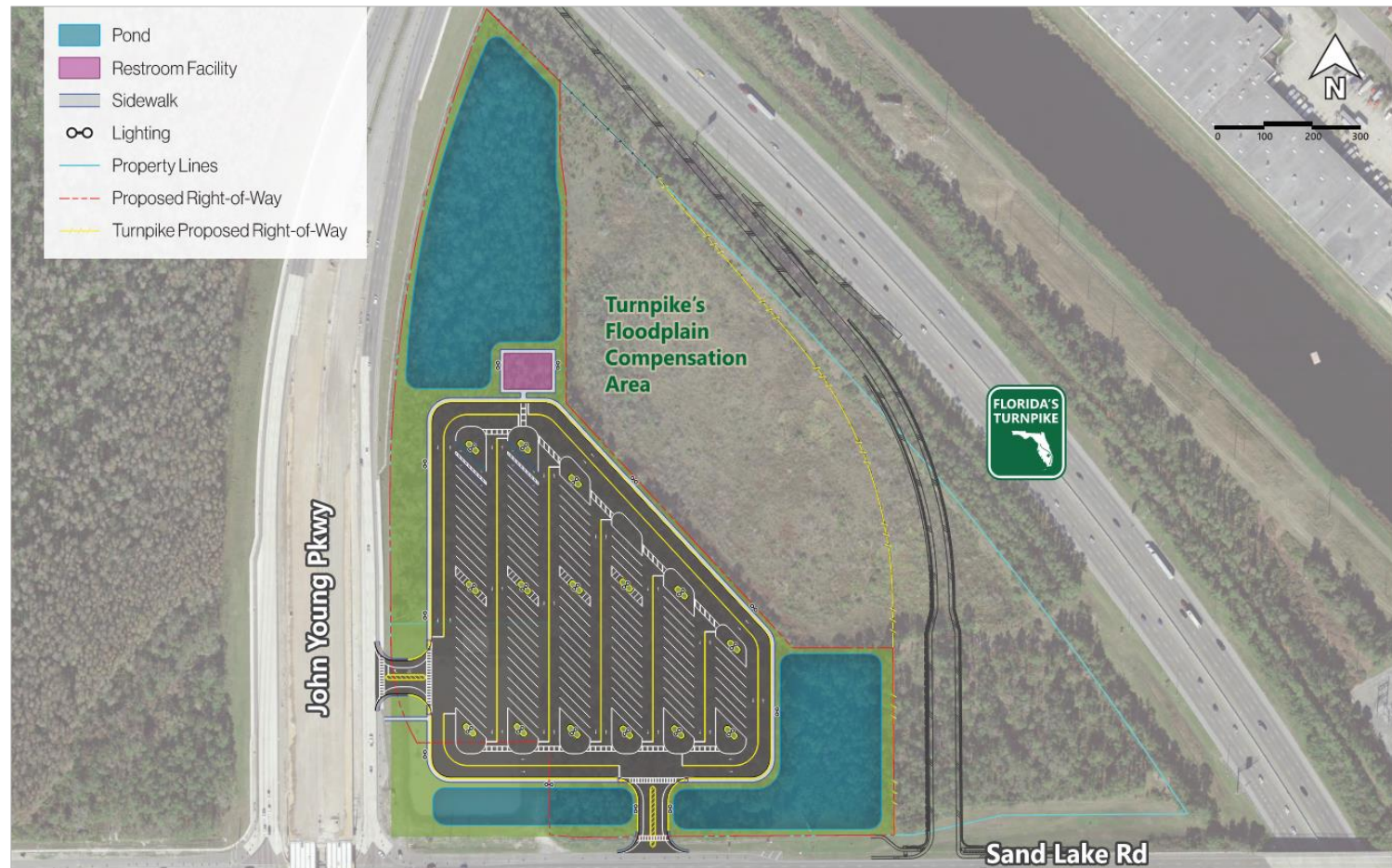
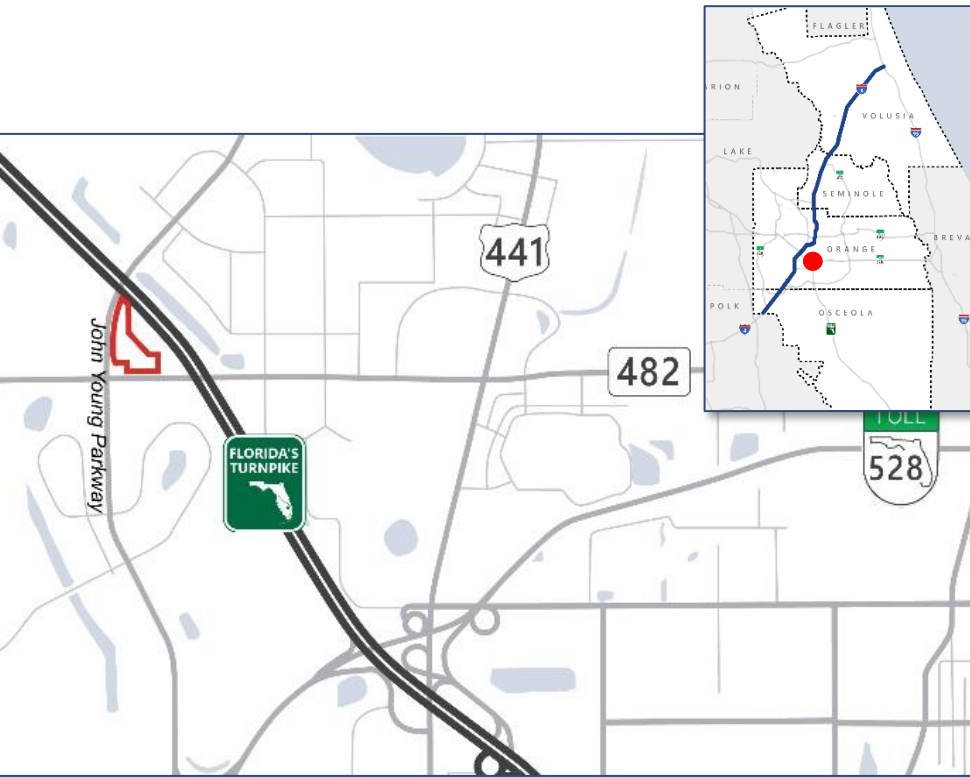
Osceola County Site – *Osceola-Polk Line Road*



Site Capacity: 234 Spaces

ROW Needed: 40.1 acres

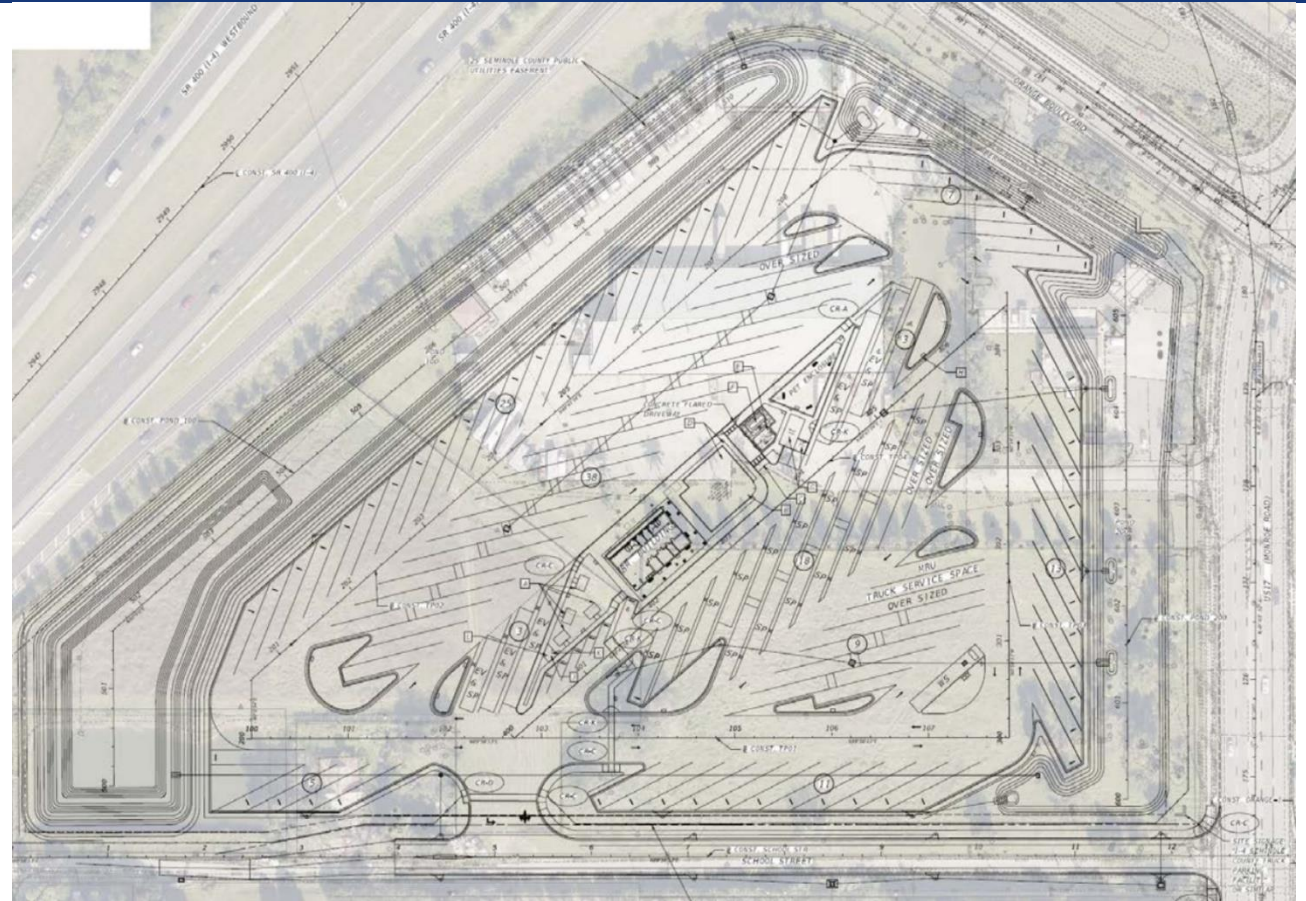
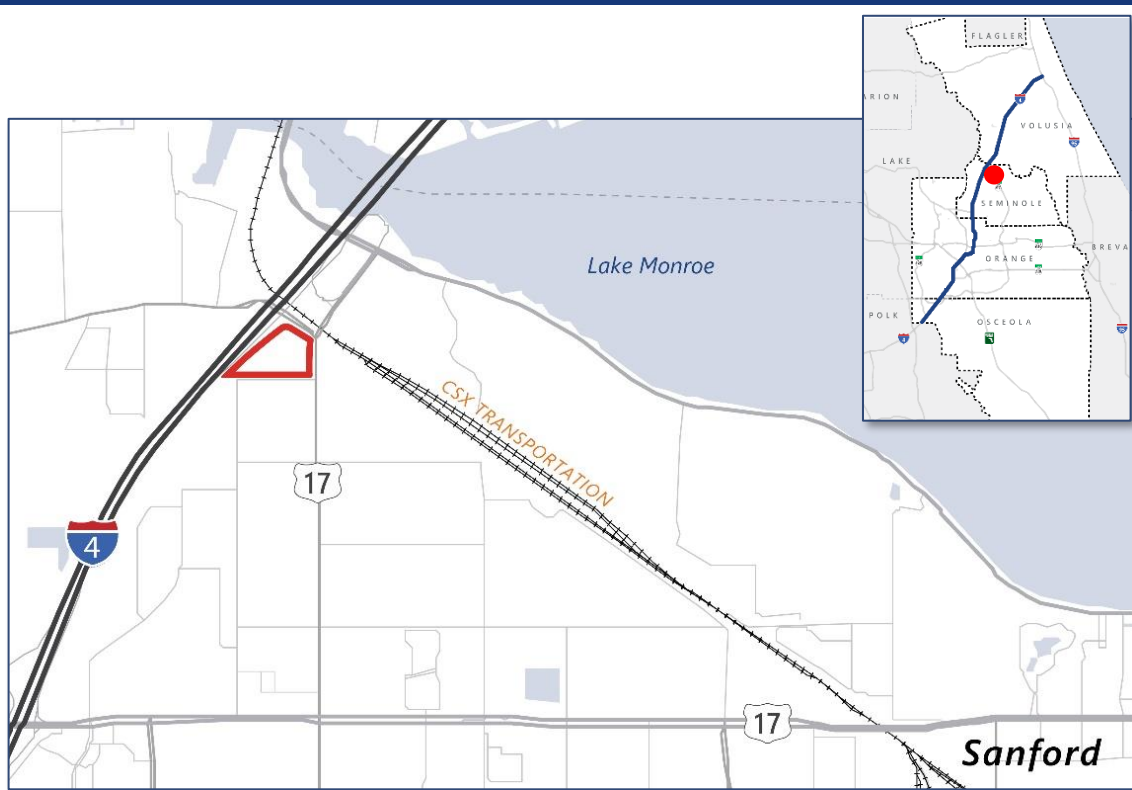
Orange County Site – Sand Lake Road at John Young Parkway (near FL Turnpike)



Site Capacity: 109 Spaces

ROW Needed: 20.2 acres (all existing FTE ROW)

Seminole County Site – I-4 at US 17/92

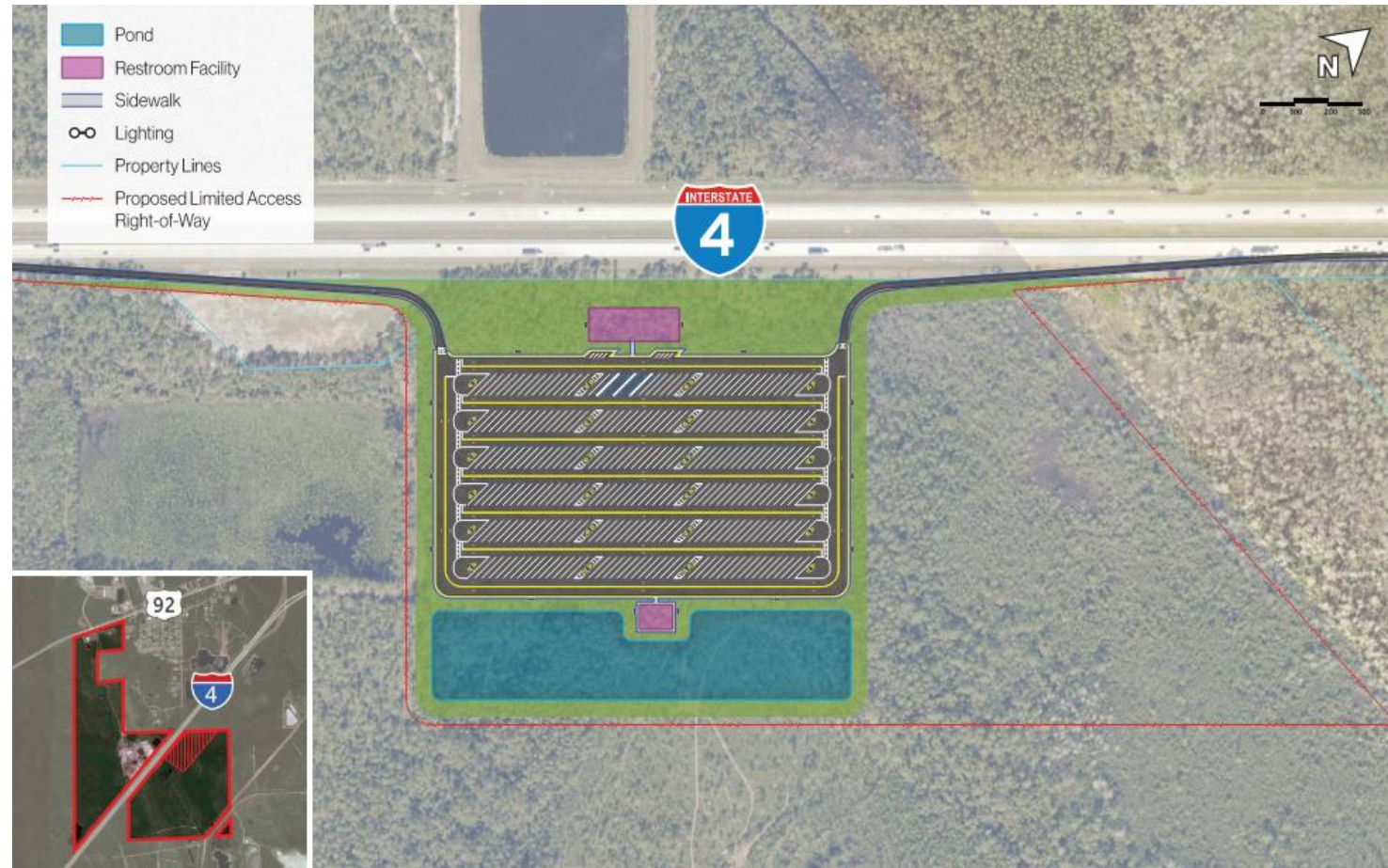
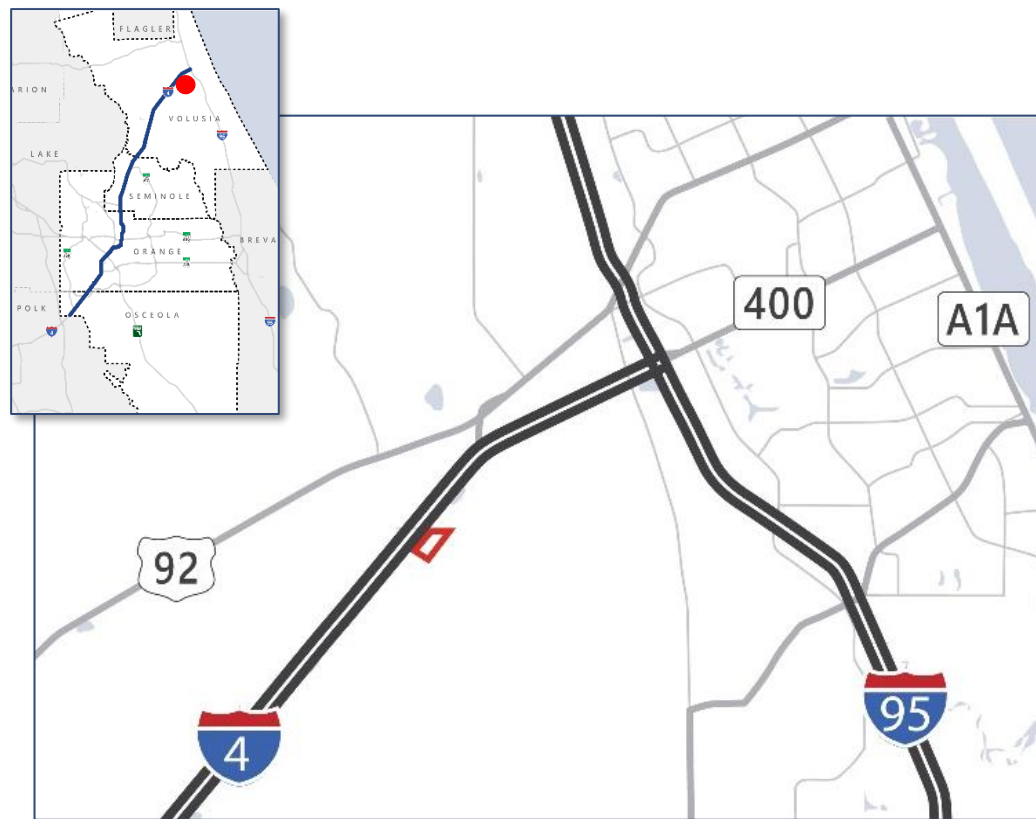


Site Capacity: 132 Spaces

ROW Needed: 18.7 acres (1.3 acres of total is proposed FDOT ROW for I-4 BtU as No-Build Alternative)

Currently in design as part of the I-4 BtU project.

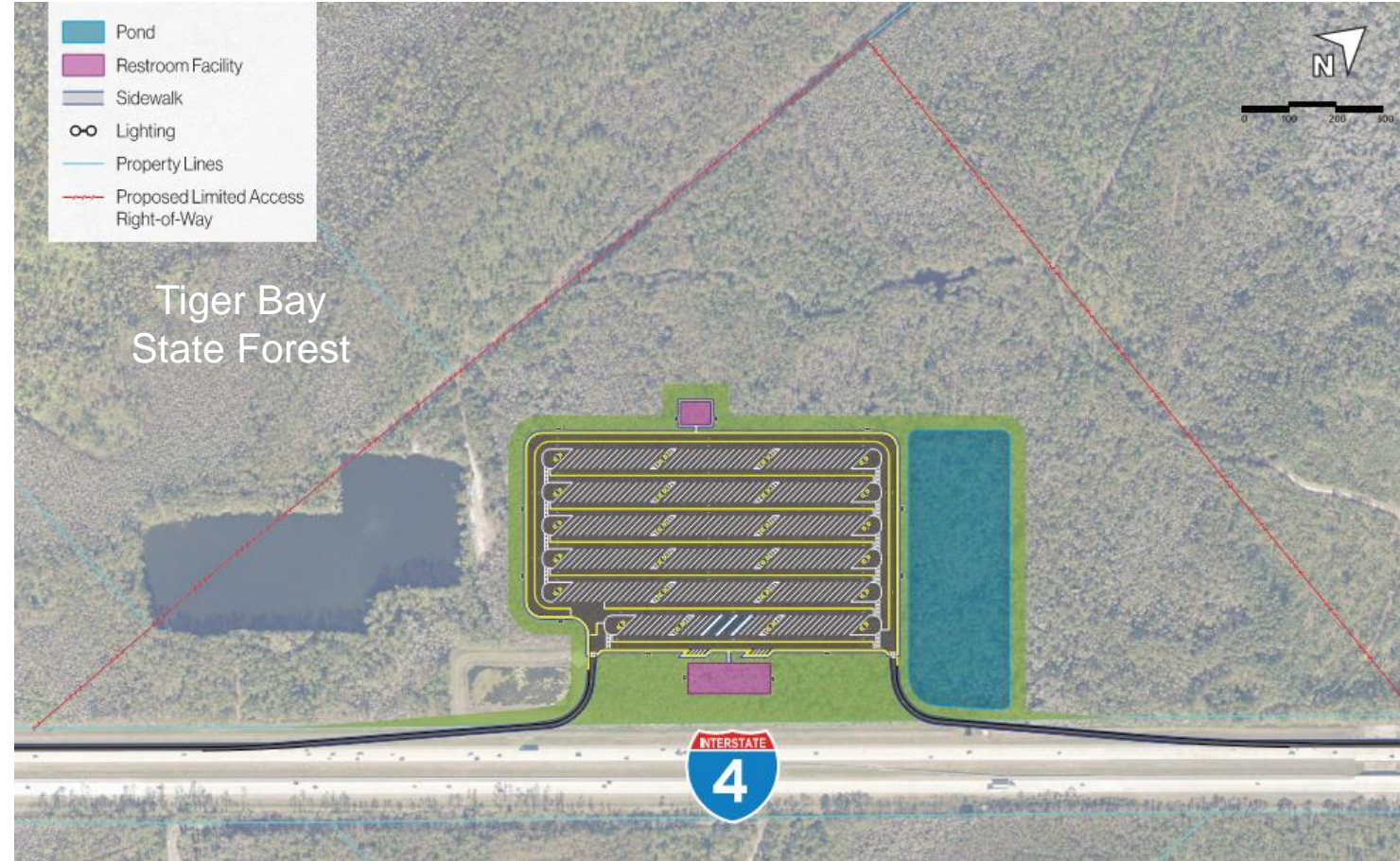
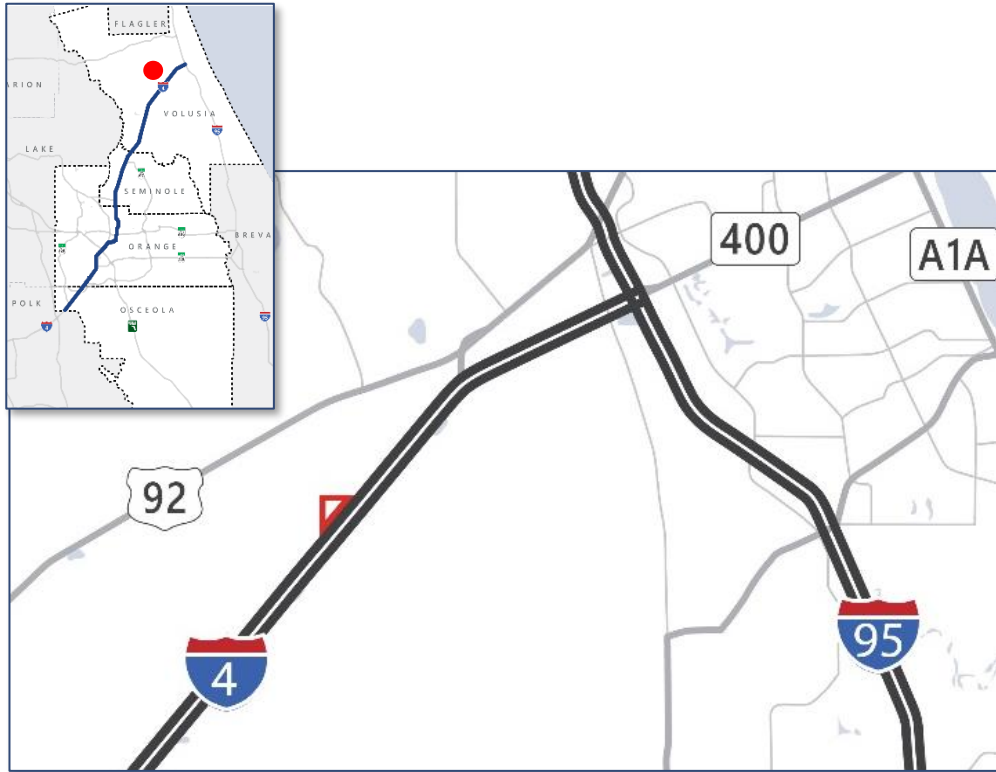
Volusia County Site 1A – *Eastbound I-4*



Site Capacity: 275 spaces

ROW Needed: 73.3 acres (*publicly owned by City of Port Orange*)

Volusia County Site 1B – *Westbound I-4*



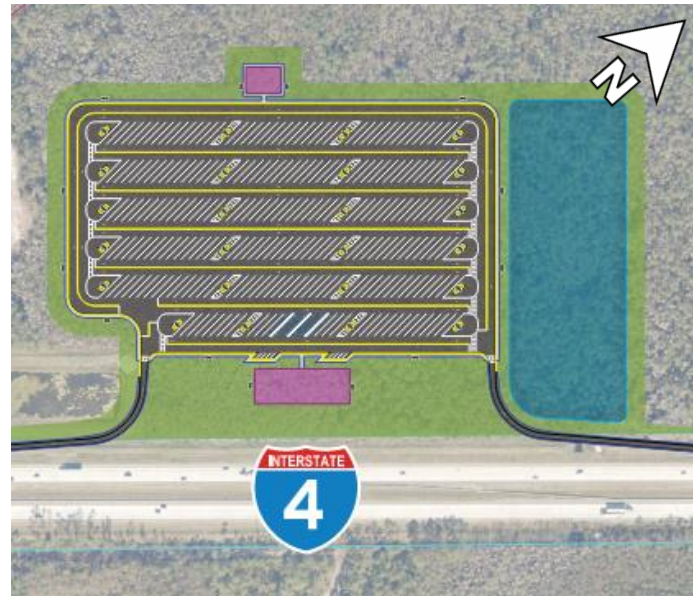
Site Capacity: 253 spaces

ROW Needed: 116.8 acres (*publicly owned by City of Daytona Beach*)

Adjacent to Tiger Bay State Forest (*west of parking site*)

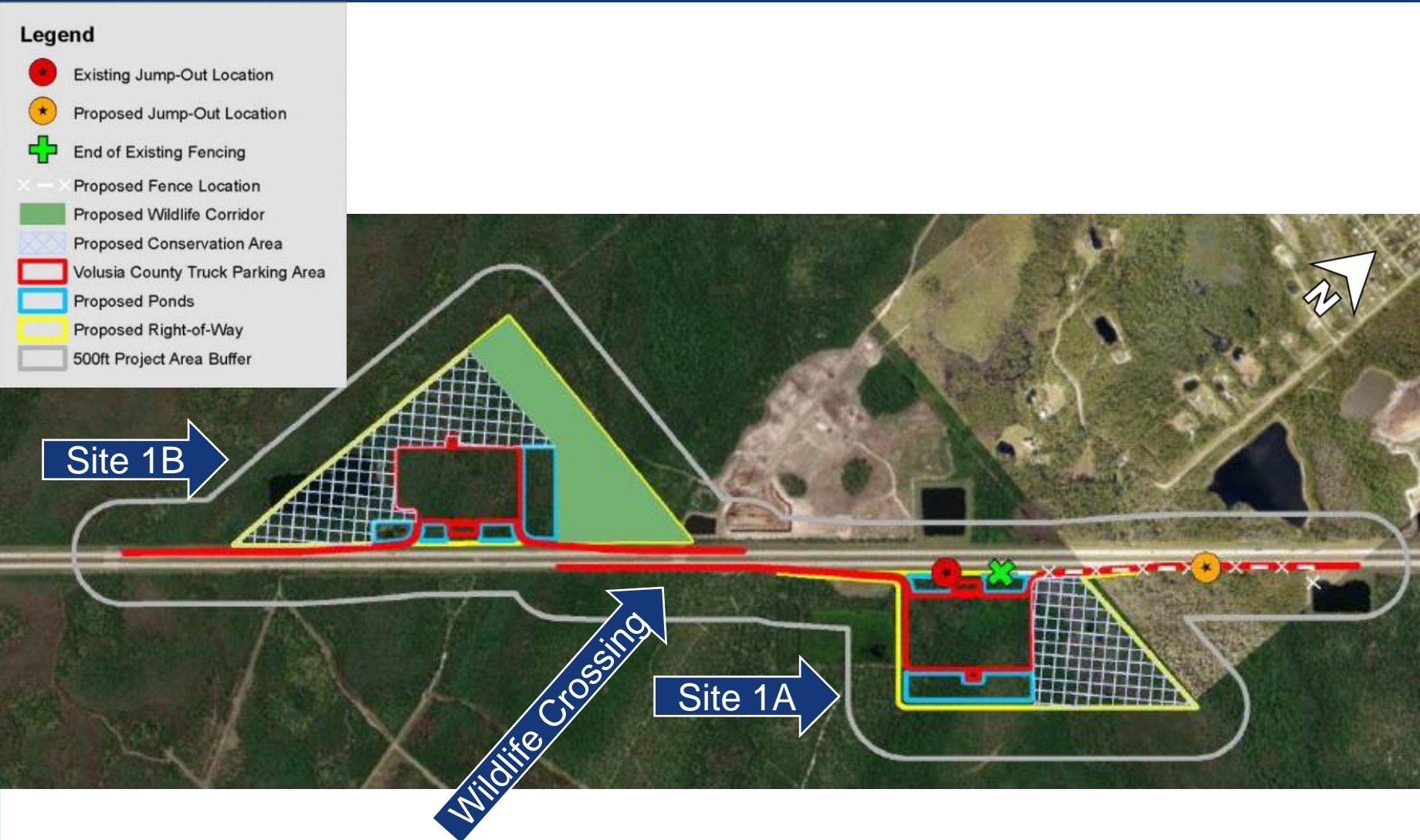
Volusia County Sites – Key Amenities/Characteristics

- Access: new access to I-4 via on- and off-ramps; no local access
- Restroom facilities on each site
- Sidewalk around site for safe access to restrooms
- Range of Spaces:
 - Truck parking spaces
 - Passenger vehicle parking spots – for maintenance vehicles
 - EV Charging/Electrification: 10% of total spaces for each site
- Truck Parking Availability System (TPAS)
- Security
 - Security office
 - Surveillance Cameras
 - 24-hour security personnel desired



Volusia County Sites - Wildlife Crossing/Conservation

- Conservation area proposed
- Wildlife fencing proposed
- Lighting shields to minimize effects
- Jump-out relocated within footprint



Project Schedule and Funding by Site

Project Site	2022	2023	2024	2025	2026	2027	2028	2029	2030	2031
*Volusia WB			●						●	●
*Volusia EB			●				●			
Seminole	●		●		●					
*Orange										
*Osceola				●			●	●		
Phase	● Design				● ROW			● Construction		

**PD&E scheduled to complete by Spring 2024*

INFRA Grant

Requesting federal funds for 60% of total project cost for 4 of the 5 sites:

- Volusia County Site 1A
- Volusia County Site 1B
- Seminole County Site
- Osceola County Site

INFRA Criteria:

- Safety
- State of Good Repair
- Economic Impacts, Freight Movement, and Job Creation
- Climate Change, Resiliency, and the Environment
- Equity, Multimodal Options, and Quality of Life
- Innovation Areas (Technology, Project Delivery, and Financing)

FDOT requesting letter of support

- LRTP Planning Consistency



Contact

**For additional information,
please contact:**

Mark Trebitz, P.E.

FDOT Project Manager

Phone: 386-943-5157

Mark.Trebitz@dot.state.fl.us

Project Website: <https://www.cflroads.com/project/447724-1>



CAC/TCC Meetings
August 15, 2023

IV. PRESENTATION, STATUS REPORTS, AND DISCUSSION ITEMS
C. PRESENTATION AND DISCUSSION OF TPO REAPPORTIONMENT
PLAN SCENARIOS

Apportionment Plans





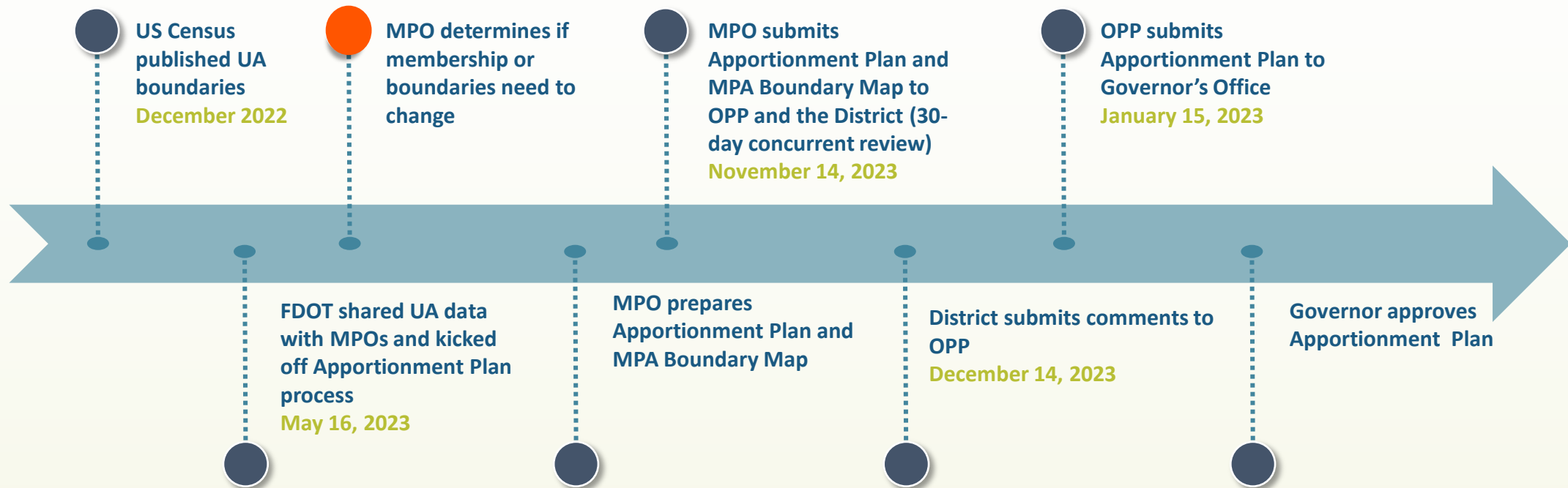
Federal and State Regulations

- **Federal Law** - 23 CFR 450.310 and 23 CFR 450.312
- **State Law** - Chapters 339.175 and 339.176 F.S.
- **River to Sea TPO Board Policies** - Weighted Voting Structure

Apportionment Plans Must Include

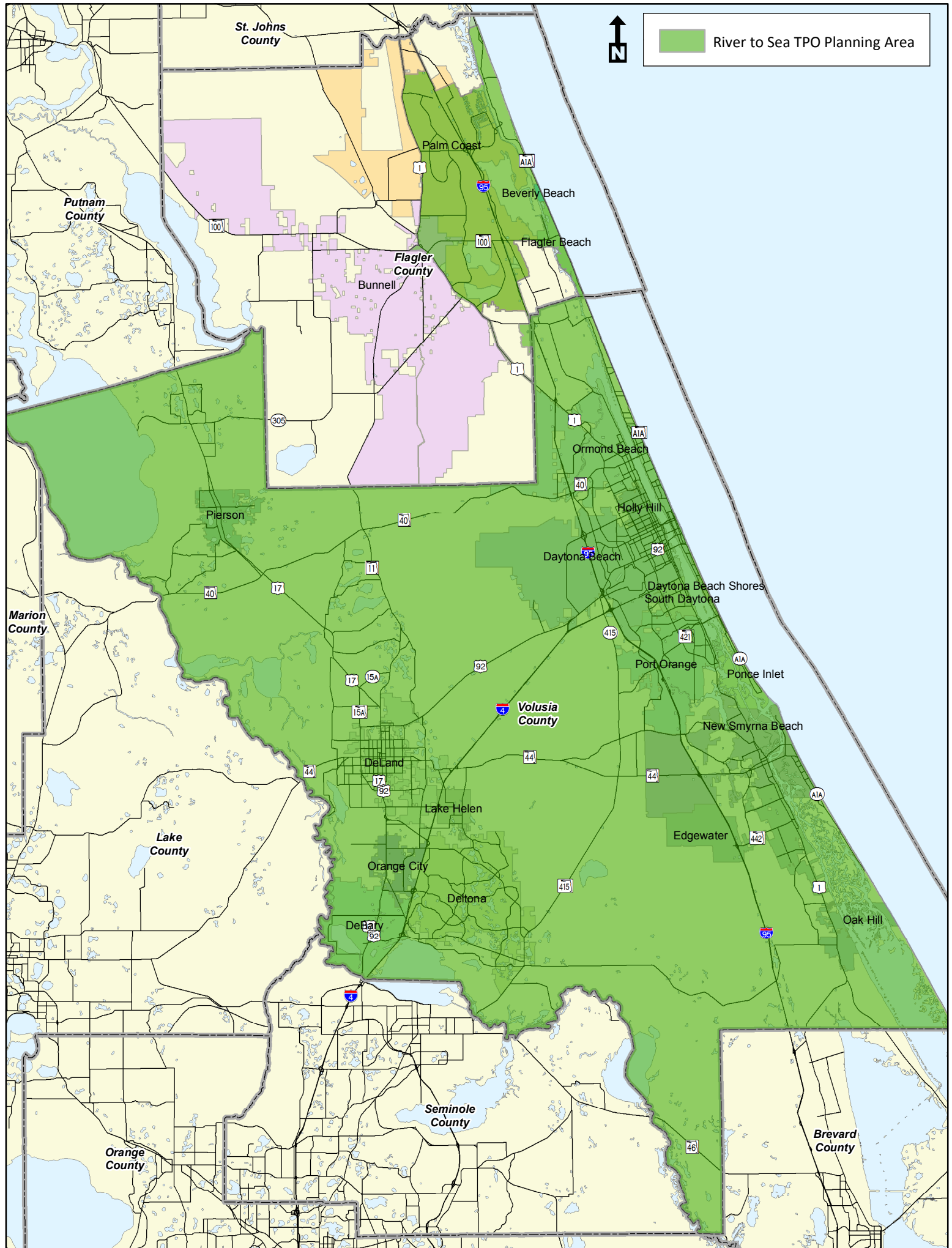
- 2010 and 2020 Census Population in MPO Area
- Current MPO Membership (local and government agencies)
- Proposed MPO Membership (local and government agencies)
- Methodology used to determine the proposed changes, if any
- MPA Boundary Map
- MPO Board resolution adopting the Apportionment Plan

Apportionment Plan Timeline



Current Apportionment Plan

- 19 Voting Members and 6 Non-Voting Advisors
- Voting Members
 - 6 County Representatives - 5 Volusia/1 Flagler
 - 12 Largest Cities based on Population
 - 1 Small City Alliance - 7 smaller cities based on population - rotating vote
- Non-Voting Advisors
 - Volusia and Flagler County School Boards, Chairperson of the TCC, CAC and BPAC, FDOT Representative
- Current MPA Boundary



Apportionment Plan Considerations

- MPA Boundary Map
 - Encompass urban areas and areas expected to become urban within 20 years
 - Adjustments in Flagler County
- Voting Membership
 - Maximum 25 Voting Members
 - County Members Must Represent 1/3 Voting Membership
- Weighted Voting Structure

CURRENT VOTING MEMBERSHIP

Jurisdiction	Seats	2010 Seat Weight	2010 Population	2018 (Current) Population*	2018 (Current) Seat Weight
County Representation	6	33.33%	122,206	122,522	33.33%
Volusia County	1	6.36%	116,655 ¹	116,678 ¹	6.35%
Volusia County	1	6.36%			6.35%
Volusia County	1	6.36%			6.35%
Volusia County	1	6.36%			6.35%
Volusia County	1	6.36%			6.35%
Flagler County ²	1	1.51%	5,551	5,844	1.59%
Municipal Representation	13	66.67%	459,983	506,579	66.67%
Larger City Total	12	63.72%	439,629	484,985	63.82%
Deltona	1	12.35%	85,182	91,007	11.98%
Palm Coast ²	1	10.90%	75,182	84,575	11.13%
Daytona Beach	1	8.84%	61,005	66,267	8.72%
Port Orange	1	8.12%	56,048	61,009	8.03%
Ormond Beach	1	5.53%	38,137	41,140	5.41%
DeLand	1	3.92%	27,031	34,106	4.49%
New Smyrna Beach	1	3.26%	22,464	26,407	3.48%
Edgewater	1	3.01%	20,750	23,319	3.07%
DeBary	1	2.80%	19,320	20,774	2.73%
South Daytona	1	1.78%	12,252	12,703	1.67%
Holly Hill	1	1.69%	11,659	11,958	1.57%
Orange City	1	1.54%	10,599	11,720	1.54%
Small Cities Alliance	1	2.95%	20,354	21,594	2.84%
Flagler Beach	Shared	-	4,484	4,726	-
Daytona Beach Shores	Shared	-	4,247	4,294	-
Ponce Inlet	Shared	-	3,032	3,111	-
Lake Helen	Shared	-	2,624	2,752	-
Bunnell ²	Shared	-	2,101	2,598	-
Oak Hill	Shared	-	1,792	1,997	-
Pierson	Shared	-	1,736	1,760	-
Beverly Beach	Shared	-	338	356	-
TOTAL	19	100.00%	582,189	629,101	

* Bureau of Economic and Business Research (unless otherwise noted)

(Numbers may not add due to rounding)

Note: Bunnell - The Proposed Population of Bunnell is for the planning area for 2017. The following datasets were downloaded to calculate the Bunnell's population:

- 2016 Flagler County population data from the American Community Survey (ACS) with census block group shapefiles
- City of Bunnell Boundary from the Florida Geographic Data Library (FGDL) site
- Census tract data from the United States Census Bureau site

Note: Palm Coast - After reviewing the aerial imagery of the west side of Palm Coast, which is outside of the TPO boundary, there are no residential buildings to indicate the population in the area. Most of the area is rural, and only a few commercial or industrial buildings are located on the west side of the city. In this situation, the BEBR population estimates are used for Palm Coast.

Note: Unincorporated Flagler County - 2015 Traffic Analysis Zone (TAZ) socioeconomic and 2018 Google Earth imagery data sources are used to calculate the population within the planning area.

¹ Unincorporated area population

² Bunnell, Palm Coast, and Unincorporated Flagler County population is for the planning area

Apportionment Plan Scenarios

Boundary

- Update MPA Boundary to reflect new urban areas
- Update MPA Boundary to reflect anticipated urbanized areas within 20 years
- Update MPA Boundary to include all of Flagler County

Membership

- Maintain Existing Apportioned Voting Seats
- Increase Existing Apportioned Voting Seats
- Weighted Voting Structure

Next Steps

- Discuss Potential Scenarios with the TPO Board Next Week
- Further Coordination with Affected Local Governments
- Present Draft Apportionment Plan - September
- Present Final Apportionment Plan for Approval - October
- Transmit Apportionment Plan to the State - November 14th



CAC/TCC Meetings

August 15, 2023

IV. PRESENTATION, STATUS REPORTS, AND DISCUSSION ITEMS

D. FDOT REPORT



CAC/TCC Meetings
August 15, 2023

IV. PRESENTATION, STATUS REPORTS, AND DISCUSSION ITEMS
E. VOLUSIA COUNTY AND FLAGLER COUNTY CONSTRUCTION
REPORTS



CAC/TCC Meetings August 15, 2023

V. STAFF COMMENTS



CAC/TCC Meetings August 15, 2023

VI. CAC/TCC MEMBER COMMENTS



CAC/TCC Meetings

August 15, 2023

VII. INFORMATION ITEMS

CAC & TCC Attendance Records

River to Sea TPO Outreach and Events

Upcoming River to Sea TPO Events

TPO Board Report



CAC/TCC Meetings
August 15, 2023

VIII. ADJOURNMENT

The next CAC & TCC meetings will be on September 19, 2023