



Amended MEETING AGENDA

Please be advised that the **RIVER TO SEA TRANSPORTATION PLANNING ORGANIZATION (TPO)** **EXECUTIVE COMMITTEE** will be meeting on:

DATE: Wednesday, August 2, 2023
TIME: 9:00 a.m.
PLACE: River to Sea TPO Conference Room
1 Deuce Court, Suite 100
Daytona Beach, FL 32124

NOTE:
A Microsoft Teams Meeting has been established for remote participation.

Executive Committee Meeting

[Click here to join the meeting](#)

Or call in (audio only)

+1 561-484-5911 664389685# United States, West Palm Beach

Phone Conference ID: 664 389 685#

[Find a local number](#) | [Reset PIN](#)

DeLand Mayor Chris Cloudman, Chairperson Presiding

AMENDED AGENDA

- I. CALL TO ORDER/ROLL CALL/DETERMINATION OF A QUORUM
- II. PUBLIC COMMENT/PARTICIPATION
- III. BUSINESS ITEMS
 - A. Discussion of TPO Financial Management
 - B. Discussion of Protocol for TPO Board Consent Agenda Items
 - C. Discussion of the TPO Office Relocation
 - D. Review and Approval of Letter of Support for the FDOT Central Florida I-4 Truck Parking Facilities Application to the US DOT Infrastructure for Rebuilding America (INFRA) Grant Program (contact: Colleen Nicoulin)

Beverly Beach
Bunnell
Daytona Beach
Daytona Beach Shores

DeBary
DeLand
Deltona
Edgewater

Flagler Beach
Flagler County
Holly Hill
Lake Helen

New Smyrna Beach
Oak Hill
Orange City
Ormond Beach

Palm Coast
Pierson
Ponce Inlet
Port Orange

South Daytona
Volusia County

E. Review and Approval of June 7, 2023 Executive Committee Minutes *(Enclosure, pages)*

F. Review and Approval of Draft August 23, 2023 TPO Board Agenda *(Enclosure, pages)*

IV. STAFF COMMENTS

V. EXECUTIVE COMMITTEE MEMBER COMMENTS

VI. ADJOURNMENT

Individuals covered by the Americans with Disabilities Act of 1990 in need of accommodations for this public meeting should contact the River to Sea TPO office, 1 Deuce Court, Suite 100, Daytona Beach, Florida 32124; (386) 226-0422, extension 20416, at least five (5) working days prior to the meeting date.

If any person decides to appeal a decision made by this board with respect to any matter considered at such meeting or hearing, he/she will need a record of the proceedings including all testimony and evidence upon which the appeal is to be based. To that end, such person will want to ensure that a verbatim record of the proceedings is made.

The River to Sea TPO does not discriminate in any of its programs or services. To learn more about our commitment to nondiscrimination and diversity, visit our Title VI page at www.r2ctpo.org or contact our Title VI/Nondiscrimination Coordinator, Pamela Blankenship, at 386-226-0422, extension 20416, or pblankenship@r2ctpo.org.



August 2, 2023

FILE: CMC 2023-06

The Honorable Pete Buttigieg, Secretary
U.S. Department of Transportation
1200 New Jersey Avenue, Southeast
Washington, District of Columbia 20590

Subject: Application to the 2023 Infrastructure for Rebuilding America (INFRA) Grant Program for the Central Florida I-4 Truck Parking Facilities

Dear Secretary Buttigieg:

On behalf of the River to Sea Transportation Planning Organization (TPO), I am writing in support of the Florida Department of Transportation (FDOT) as it seeks funding from the 2023 Infrastructure for Rebuilding America (INFRA) grant program for the Central Florida I-4 Truck Parking Facilities. This project will address a critical need for truck parking as identified by the US Department of Transportation, the FDOT and the American Transportation Research Institute.

The Central Florida I-4 Truck Parking Facilities project addresses the serious need for additional parking along the I-4 corridor to provide safe parking for truck drivers to meet hours of service rest requirements. The I-4 corridor within FDOT District 5 has the highest unmet truck parking demand in the state with only 36 existing public truck parking spaces, while the existing demand is 481 spaces. This project will provide an additional 917 truck parking spaces within four different sites in Volusia, Seminole, and Osceola counties. Once completed, the proposed facility will connect to the statewide Truck Parking Availability System which provides truck drivers with valuable, real-time available parking information.

These Central Florida I-4 truck parking facilities also have the capacity to serve as emergency response staging areas for the state in the case of hurricanes or other extreme weather events. During weather-related emergencies, rescue vehicles and response teams could be staged at the parking facilities. Following the emergency event, the facilities could also be used as relief supply staging areas for Central Florida.

Thank you for your favorable consideration of the Central Florida I-4 Truck Parking Facilities INFRA Grant application.

Sincerely,

City of DeLand Mayor Christopher M. Cloudman
Chairperson, River to Sea TPO

Beverly Beach
Bunnell
Daytona Beach
Daytona Beach Shores

DeBary
DeLand
Deltona
Edgewater

Flagler Beach
Flagler County
Holly Hill
Lake Helen

New Smyrna Beach
Oak Hill
Orange City
Ormond Beach

Palm Coast
Pierson
Ponce Inlet
Port Orange

South Daytona
Volusia County

District Five I-4 TRUCK PARKING FACILITIES



GRANT TYPE

Nationally Significant
Multimodal Freight and
Highways Projects (INFRA)

GRANT AGENCY

U.S. Department of
Transportation (USDOT)

PROJECT TYPE

Rural

PROJECT NAME

I-4 Truck Parking Facilities

APPLICANT/ PROJECT SPONSOR

Florida Department of
Transportation District Five

SCHEDULE

Construction 2026-2028

TOTAL PROJECT COST

\$300,015,700

GRANT REQUEST

\$180,009,420 (60%)

OTHER FEDERAL FUNDS

\$60,003,140 (20%)

NON-FEDERAL MATCH

\$60,003,140 (20%)

WAS A BUILD OR INFRA APPLICATION FOR THIS PROJECT SUBMITTED PREVIOUSLY?

No

Project Description

The I-4 corridor within FDOT District Five has the highest unmet truck parking demand in the State of Florida with only 36 existing public truck parking spaces, while the existing demand is 481 spaces. With continued population, employment, and tourism growth in the region, truck parking demand is expected to grow to 750 spaces by the year 2025 and to 883 spaces by the year 2040. This project will provide an additional 917 truck parking spaces within four different sites in Volusia, Seminole, and Osceola Counties. The two Volusia County sites would include a total of 528 spaces. The Volusia eastbound site would include 275 spaces and is 73.3 acres and the Volusia westbound site would include 253 spaces and is 120 acres. The Seminole County site would include 132 spaces and is 18.3 acres. The Osceola County site would include 257 spaces and is 43 acres.

Project Location

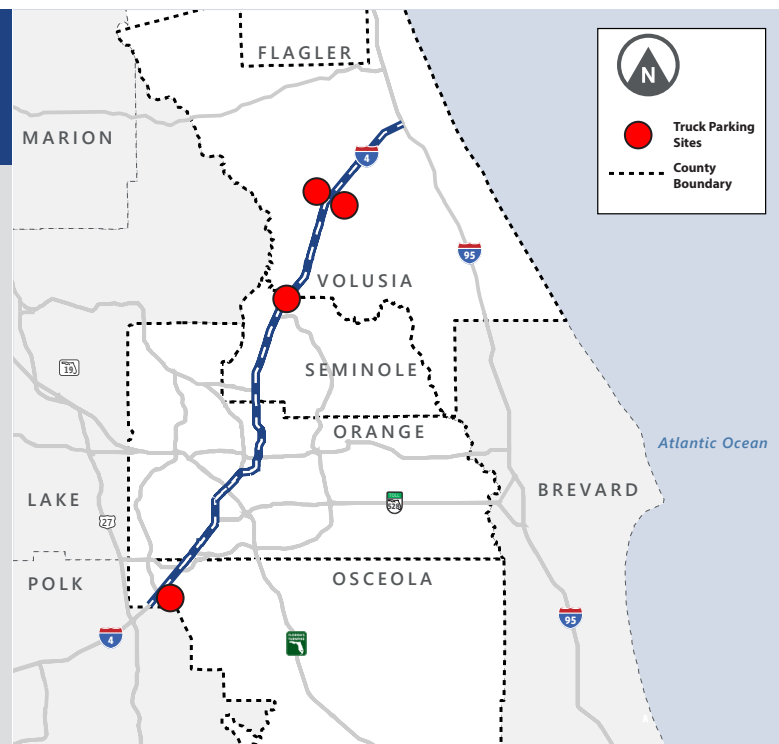
The two Volusia County sites are located on the I-4 corridor, 4.8 miles west of I-95. The Seminole County site is located 0.5 miles east of I-4 near the intersection of Orange Blvd and US 17/92. The Osceola County Site is located approximately 3.87 miles east of the I-4 interchange along the south side of Osceola-Polk Line Road (CR 532).

4
LOCATIONS

3
COUNTIES

*Volusia,
Seminole,
Osceola*

917
PARKING
SPACES



Project Benefits

SAFETY

A lack of truck parking spaces forces truck drivers to spend time searching for parking when they are most fatigued. Truck parking is not only a capacity issue, but also a critical safety issue.

WORKFORCE DEVELOPMENT

Availability of convenient truck parking will improve the quality of life of the drivers and attract new labor force.

TECHNOLOGY

The truck parking sites will include state-of-the-art and eco-friendly features like electric vehicle charging infrastructure and solar technologies to reduce emissions. Safety features will also be provided such as surveillance cameras, lighting, and 24-hour security staff to keep the drivers safe. These sites will be integrated with Truck Parking Availability System (TPAS) to maximize efficiency and utilization by providing real-time information to the drivers.

COMMUNITIES

Truck drivers bring essential goods to our communities. Extensive community engagement was conducted during the truck parking PD&E study.

RESILIENCY

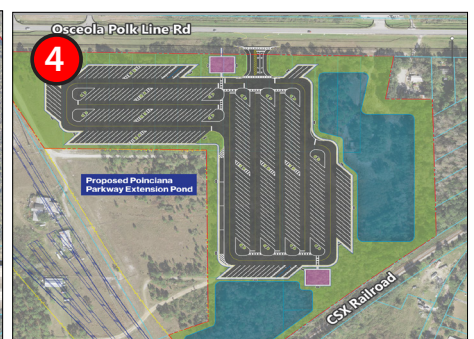
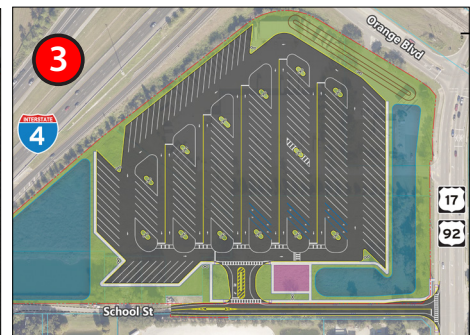
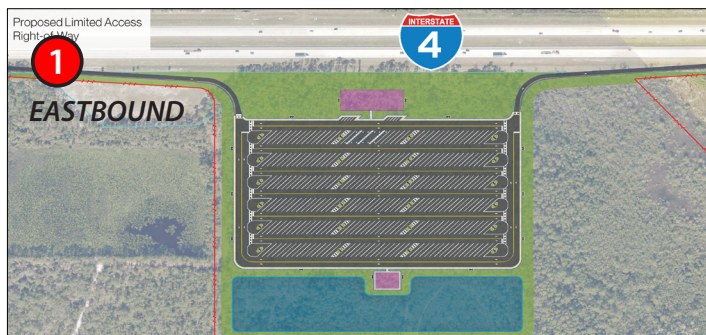
During emergencies, these truck parking sites will be utilized for securing fleet and staging crews aiding in emergency response, debris removal and reconstruction, etc.

ROBUST SUPPLY CHAIN

According to Trucker Path, 40% of truck drivers spend over an hour searching for a place to park. This equates to a \$5.1B loss in revenue annually, including wasted fuel, time lost, maintenance, and associated crashes. These truck parking sites will strengthen Florida's supply chain by improving productivity.

Truck Parking Concepts

- 1 Volusia County EB
275 Spaces
- 2 Volusia County WB
253 Spaces
- 3 Seminole County
Orange Blvd
132 Spaces
- 4 Osceola County
Osceola Polk Line Rd
257 Spaces



Project Partners

The project partners include, but are not limited to the following agencies.

