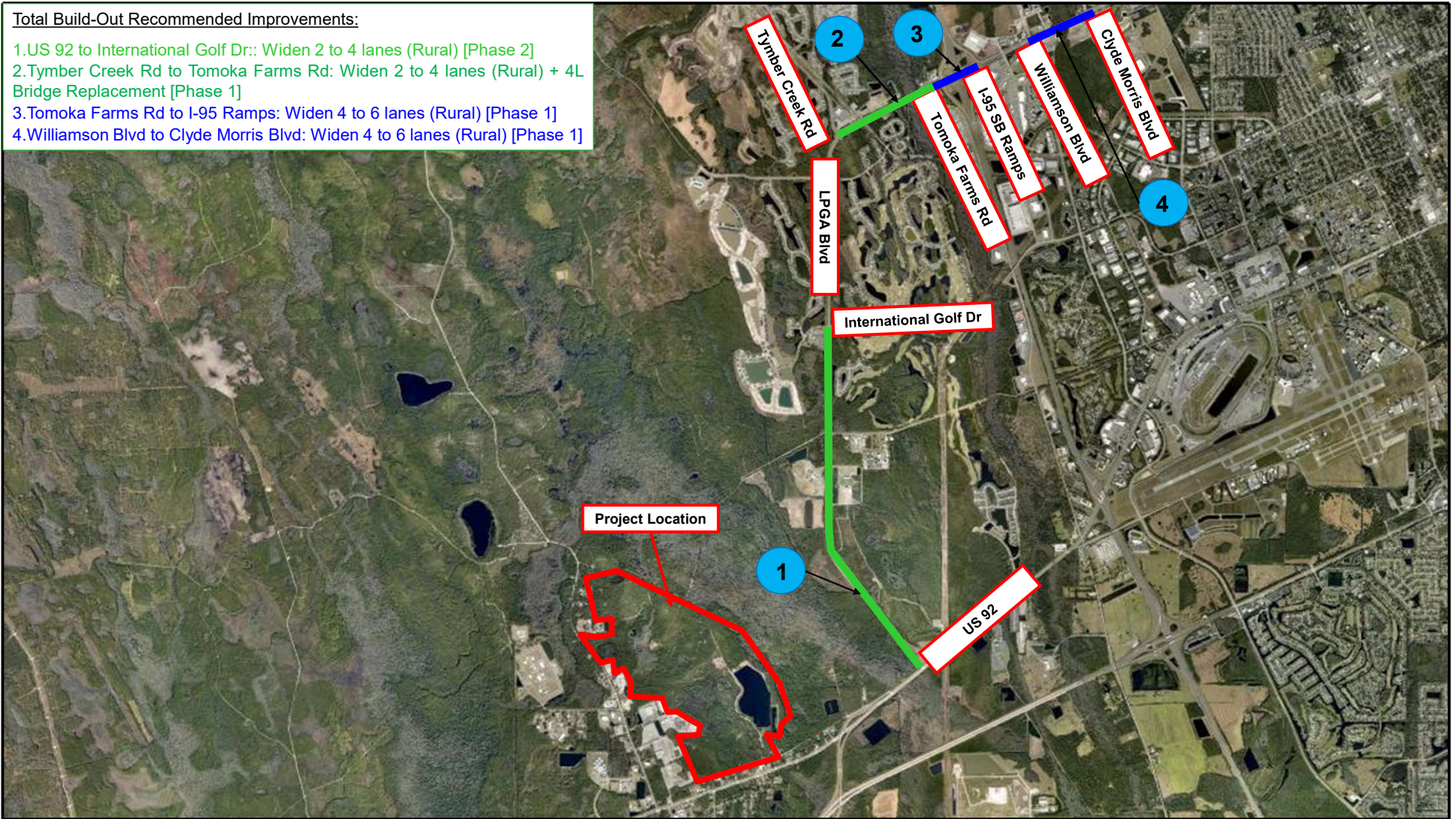


Total Build-Out Recommended Improvements:

- 1. US 92 to International Golf Dr.: Widen 2 to 4 lanes (Rural) [Phase 2]
- 2. Tymber Creek Rd to Tomoka Farms Rd: Widen 2 to 4 lanes (Rural) + 4L Bridge Replacement [Phase 1]
- 3. Tomoka Farms Rd to I-95 Ramps: Widen 4 to 6 lanes (Rural) [Phase 1]
- 4. Williamson Blvd to Clyde Morris Blvd: Widen 4 to 6 lanes (Rural) [Phase 1]



SunGate 850 Acre Industrial Park



Proportionate Share Cost Calculation For Segments

Project Number: 5526.02

Figure 1



1450 W. Granada Blvd, Suite 2 – Ormond Beach, Florida 32174
 Telephone: 386.257.2571 Fax: 386.257.6996 EB# 0009227